

CHAPTER

76

ENGINE CONTROLS



757
ILLUSTRATED TOOL AND EQUIPMENT MANUAL

CHAPTER 76
ENGINE CONTROLS

Subject/Page	Date	Subject/Page	Date	Subject/Page	Date
EFFECTIVE PAGES					
1	Sep 20/2008				
2	BLANK				
76-CONTENTS					
1	Sep 20/2006				
2	BLANK				
76-10-01					
1	Sep 20/2006				
2	Sep 20/2006				
76-10-02					
1	Sep 20/2006				
2	BLANK				
76-10-03					
1	Sep 20/2006				
2	Sep 20/2006				
76-10-04					
1	Sep 20/2006				
2	BLANK				

A = Added, R = Revised, O = Overflow, D = Deleted

76-EFFECTIVE PAGES

Page 1
Sep 20/2008

D634N501



757
ILLUSTRATED TOOL AND EQUIPMENT MANUAL

TABLE OF CONTENTS

<u>Subject</u>	<u>Title</u>	<u>Part No.</u>
76-	ENGINE CONTROLS	
76-10-01	TEST FIXTURE - THRUST LEVER, CONTROL STAND	A76001-1
76-10-02	RIGGING EQUIPMENT - ENGINE CONTROL SYSTEM	B76003-1
76-10-03	ADAPTER - THRUST CONTROL INNER SHAFT	B76004-1
76-10-04	PROTRACTOR - THRUST REVERSE LEVERS, FORWARD AND REVERSE	G76002-15

76-CONTENTS



757

ILLUSTRATED TOOL AND EQUIPMENT MANUAL

PART NUMBER: A76001-1

NAME: TEST FIXTURE - THRUST LEVER, CONTROL STAND

AIRPLANE MAINTENANCE: NO

COMPONENT MAINTENANCE: YES

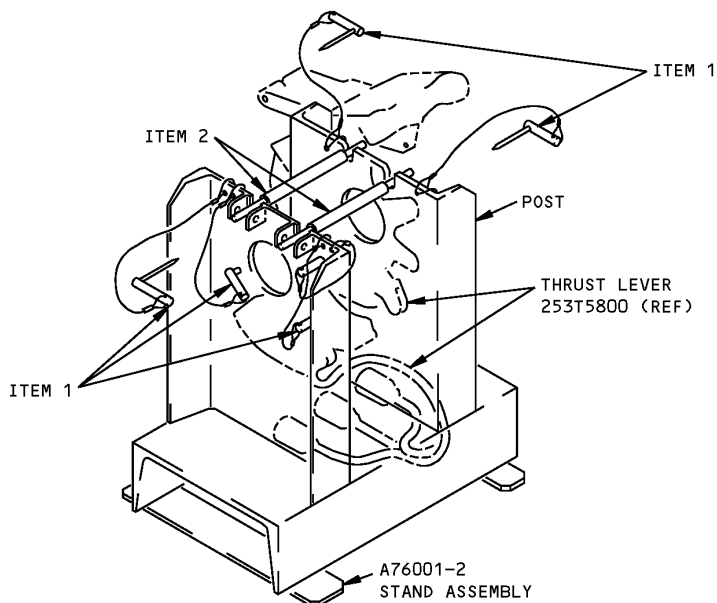
USAGE & DESCRIPTION: The A76001-1 test fixture is used to mount the thrust lever assembly during component maintenance for testing and troubleshooting. A76001 is used in conjunction with an A33003 breakout box and adapter cable set, a Simpson 260 multimeter an A27021 protractor and a G76002 thrust lever protractor. Refer to CMM 76-11-26 for complete usage instructions. A76001-1 consists of:

A76001-1		
QUANTITY	NOMENCLATURE	PART NUMBER
1	STAND ASSEMBLY	A76001-2
2	ROD ASSEMBLY	A76001-9
8	"L" PIN	CL-5-LP-C
2	WASHER	AN960-09
2	STRAIGHT HEADED PIN	MS20392-2C41
2	SPLIT COTTER PIN	MS24665-151

WEIGHT: 26 lbs (12 kg)

DIMENSIONS: 16 x 17 x 19 inches (406 x 432 x 483 mm)

757
ILLUSTRATED TOOL AND EQUIPMENT MANUAL



Control Stand Thrust Lever Test Fixture
Figure 1

REPAIRABLE/REPLACEABLE PARTS			
ITEM NO.	PART NO.	NOMENCLATURE	VENDOR CODE
1	CL-5-LP-C	"L" PIN	V99862
2	A76001-9	ROD ASSEMBLY	

757 ILLUSTRATED TOOL AND EQUIPMENT MANUAL

PART NUMBER: B76003-1

NAME: RIGGING EQUIPMENT - ENGINE CONTROL SYSTEM

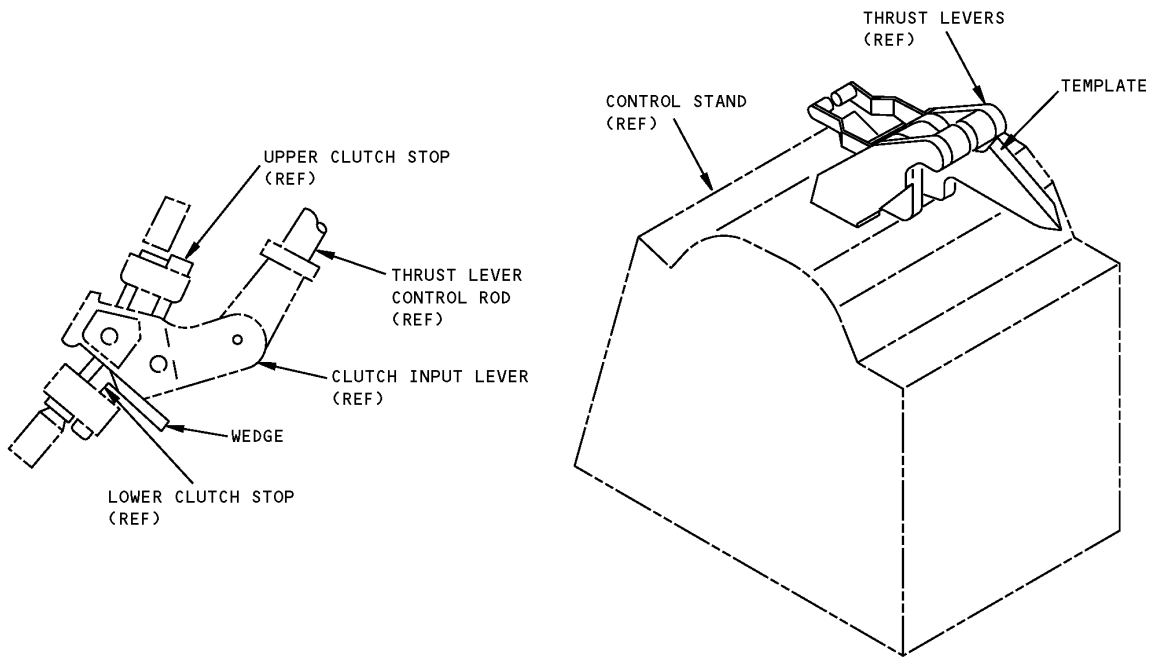
AIRPLANE MAINTENANCE: YES

COMPONENT MAINTENANCE: NO

USAGE & DESCRIPTION: The B76003-1 rigging equipment is used on all 757 airplanes. B76003 is used to position check the thrust lever spring scale and for the thrust lever load test. Refer to the current B76003 drawing and AMM 76-11-00 for complete usage instructions. B76003-1 consists of a B76003-2 wedge assembly and a B76003-4 template contained in a storage box.

WEIGHT: 1 lb (0.45 kg)

DIMENSIONS: 1 x 6 x 12 inches (25 x 152 x 305 mm)



**Engine Control System Rigging Equipment
Figure 1**



757

ILLUSTRATED TOOL AND EQUIPMENT MANUAL

PART NUMBER: B76004-1

NAME: ADAPTER - THRUST CONTROL INNER SHAFT

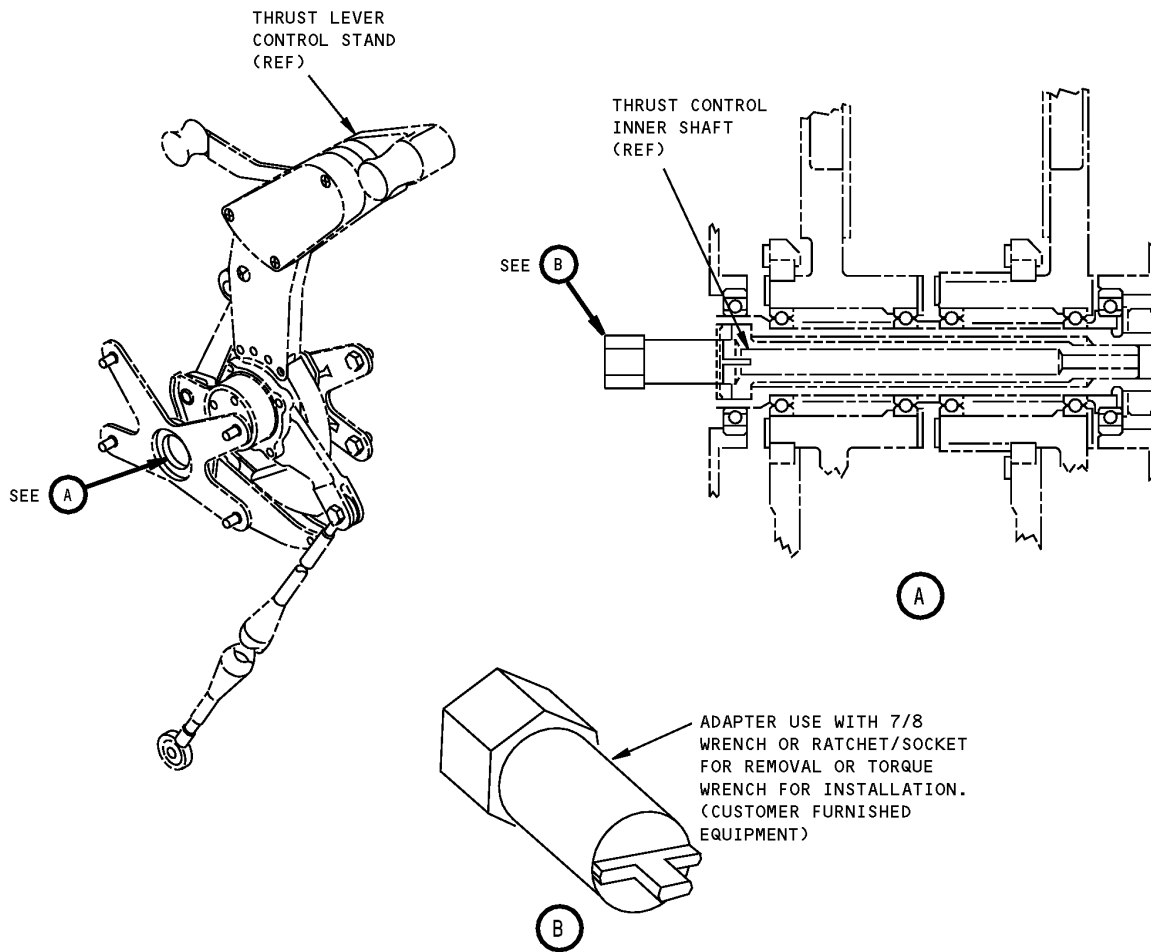
AIRPLANE MAINTENANCE: NO

COMPONENT MAINTENANCE: YES

USAGE & DESCRIPTION: The B76004-1 adapter is used during component maintenance on all 757 airplanes. B76004 is used for the removal and installation of the thrust control inner shaft from the 254N1054 or 012N8624 control stand thrust lever assembly. Refer to CMM 76-11-26 for complete usage instructions. B76004-1 consists of a B76004-3 adapter contained in a storage box.

WEIGHT: 1 lb (0.45 kg)

DIMENSIONS: 1 x 1 x 3 inches (25 x 25 x 76 mm)



Thrust Control Inner Shaft Adapter
Figure 1



757
ILLUSTRATED TOOL AND EQUIPMENT MANUAL

PART NUMBER: G76002-15

NAME: PROTRACTOR - THRUST REVERSER LEVERS, FORWARD AND REVERSE

AIRPLANE MAINTENANCE: YES

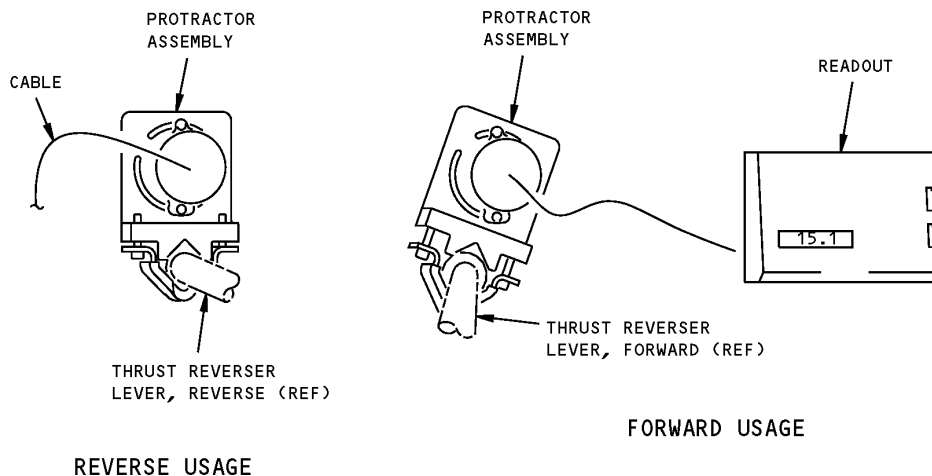
COMPONENT MAINTENANCE: YES

USAGE & DESCRIPTION: The G76002-15 protractor is used on all 757 airplanes. G76002 is used for full travel angular measurements of the forward and reverse thrust reverser levers. A modified Lucas Control Systems, part number 0311-0008-000, clinometer, attaches to the thrust reverser levers. The clinometer is connected by cable to a digital readout of the angular movement of the thrust levers. Refer to AMM 78-34-06 and CMM 76-11-26 for complete usage instructions. G76002-15 consists of a G76002-17 protractor assembly contained in a storage box.

WEIGHT: 1 lb (0.45 kg)

DIMENSIONS: 4 x 6 x 6 inches (102 x 152 x 152 mm)

NOTE: G76002-15 supersedes G76002-7.



Forward And Reverse Thrust Reverser Levers Protractor
Figure 1