

**CHAPTER**

**24**

**ELECTRICAL POWER**



**767**

# ILLUSTRATED TOOL AND EQUIPMENT MANUAL

## CHAPTER 24 ELECTRICAL POWER

Subject/Page	Date	Subject/Page	Date	Subject/Page	Date
EFFECTIVE PAGES		24-10-03 (cont)		24-40-02	
1	Oct 10/2008	2	Apr 10/2006	1	Apr 10/2006
2	BLANK	24-10-04		2	Apr 10/2006
24-CONTENTS		1	Apr 10/2006		
R 1	Oct 10/2008	2	Apr 10/2006		
2	BLANK	24-10-05			
24-00-01		1	Oct 10/2006		
R 1	Oct 10/2008	2	Oct 10/2006		
R 2	Oct 10/2008	3	Oct 10/2006		
3	Apr 10/2006	4	BLANK		
4	BLANK	24-10-06			
24-00-02		1	Apr 10/2006		
1	Apr 10/2007	2	BLANK		
2	Oct 10/2007	24-10-07			
3	Apr 10/2006	1	Apr 10/2006		
4	Apr 10/2007	2	BLANK		
24-00-03		24-10-08			
1	Apr 10/2006	1	Apr 10/2006		
2	Apr 10/2006	2	Apr 10/2006		
3	Apr 10/2006	24-10-09			
4	Apr 10/2006	A 1	Oct 10/2008		
24-00-04		A 2	Oct 10/2008		
1	Apr 10/2006	24-20-01			
2	Apr 10/2006	1	Apr 10/2006		
24-00-05		2	Apr 10/2006		
1	Apr 10/2006	24-20-02			
2	Apr 10/2006	1	Oct 10/2006		
24-00-06		2	Apr 10/2006		
1	Apr 10/2006	3	Apr 10/2006		
2	Apr 10/2006	4	Apr 10/2006		
24-10-01		24-20-03			
1	Apr 10/2006	1	Apr 10/2006		
2	Apr 10/2006	2	BLANK		
24-10-02		24-30-01			
1	Apr 10/2007	1	Apr 10/2006		
2	Apr 10/2007	2	Apr 10/2006		
3	Apr 10/2007	24-40-01			
4	BLANK	1	Apr 10/2006		
24-10-03		2	Apr 10/2006		
1	Apr 10/2006				

A = Added, R = Revised, O = Overflow, D = Deleted

# 24-EFFECTIVE PAGES

Page 1  
Oct 10/2008

D634T501



767

## ILLUSTRATED TOOL AND EQUIPMENT MANUAL

### TABLE OF CONTENTS

<u>Subject</u>	<u>Title</u>	<u>Part No.</u>
<b>24-</b>	<b>ELECTRICAL POWER</b>	
I 24-00-01	LIFT FIXTURE - ENGINE ACCESSORY	A71015-107
24-00-02	HOIST EQUIPMENT - LRU'S MAIN EE BAY	A24001-1, -5
24-00-03	HOIST EQUIPMENT - APU BATTERY	A49006-26
24-00-04	HOIST EQUIPMENT - APU BATTERY	A24006-1
24-00-05	SUPPORT HOOK - ENGINE POWER FEED CABLE, PW4000 ENGINE	G24006-1
24-00-06	HOIST SYSTEM - RB211, CF6-50 AND JT9D ENGINE ACCESSORY	G24011-1
24-10-01	INSPECTION PLATE - QAD	900-24999
24-10-02	WRENCH, SPECIAL TORQUE	F80-0-50007
24-10-03	DISPATCH EQUIPMENT - IDG, CF6-80C2 ENGINE	G24005-24
24-10-04	IDG DISPATCH KIT - RB211-524 ENGINE	G24009-1
24-10-05	HOIST ADAPTER ASSEMBLY - INTEGRATED DRIVE GENERATOR	A24011-1
24-10-06	ACCESSORY ADAPTER - HOIST SYSTEM RB211 AND CF6-50 ENGINES	G24013-1
24-10-07	ACCESSORY ADAPTER - HOIST SYSTEM, RB211-524, CF6-50 ENGINES	2ME65B89603
24-10-08	DISPATCH KIT - INTEGRATED DRIVE GENERATOR, PRATT AND WHITNEY ENGINES	A24012-1
I 24-10-09	Pressure Test Equipment - Engine Generators	J24015-1
24-20-01	TEST RELAY - ISOLATION REQUEST, POWER DISTRIBUTION SYSTEM	A24004-1, -2
24-20-02	TEST BOX - HYDRAULIC MOTOR DRIVEN GENERATOR CONTROL UNIT	A24008-19, -27, -37
24-20-03	LIFTING EYE - APU GENERATOR	A49002-1, -2
24-30-01	LOAD BANK - DC GENERATION SYSTEM	A24005-1
24-40-01	WEAR GAGE SET - GROUND POWER PLUG AND RECEPTACLE	F70284-1
24-40-02	SUPPORT - ELECTRICAL GROUND POWER CABLE	A24007-1

## 24-CONTENTS



767

## ILLUSTRATED TOOL AND EQUIPMENT MANUAL

**PART NUMBER: A71015-107**

**NAME:** LIFT FIXTURE - ENGINE ACCESSORY

**AIRPLANE MAINTENANCE:** YES

**COMPONENT MAINTENANCE:** NO

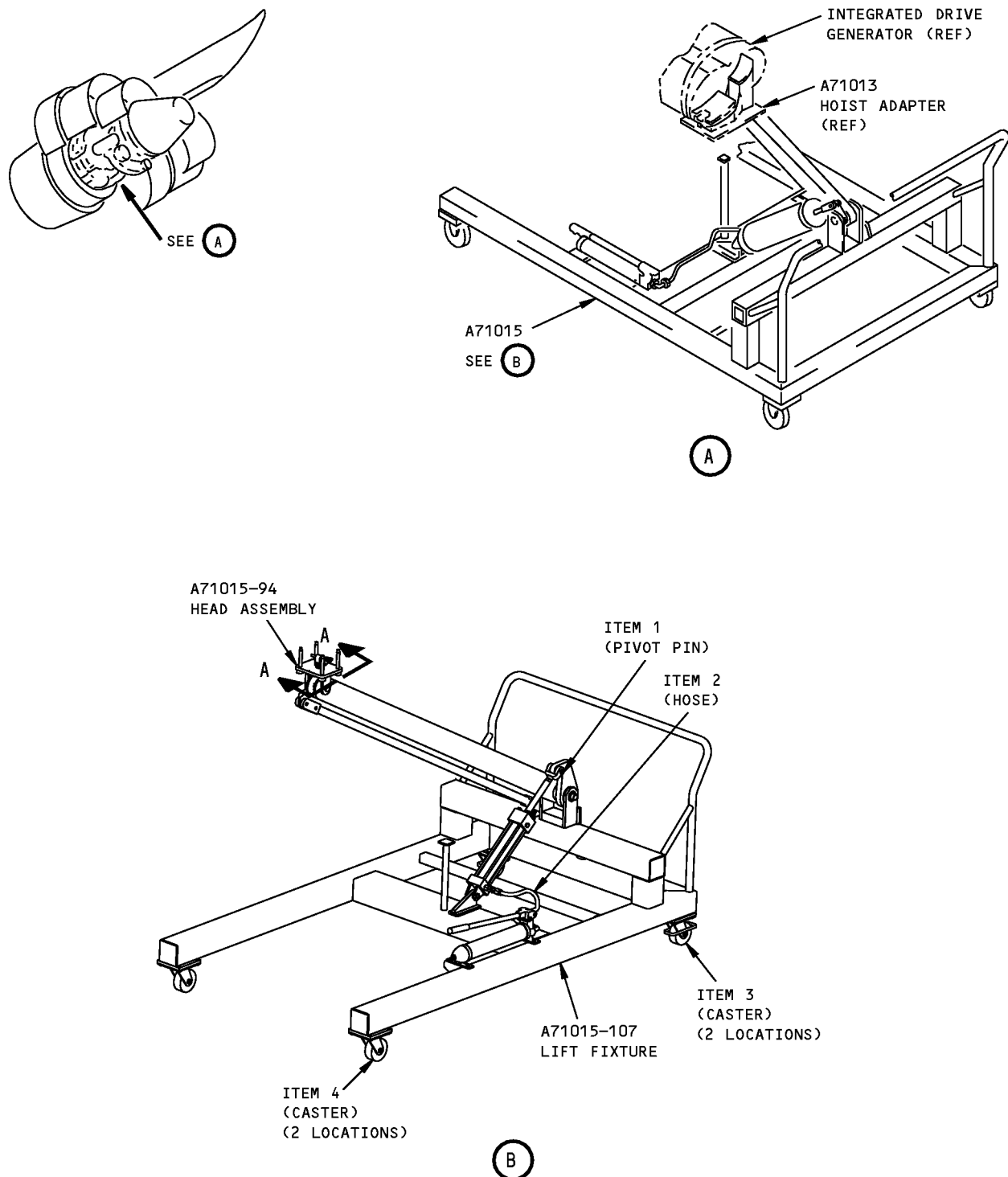
**USAGE & DESCRIPTION:** The A71015-107 lift fixture is used on all 767 airplanes. A71015 contains a manual hydraulic pump to raise and lower a hoist arm. The hoist arm contains a swiveling head that is designed for use by a number of adapters. A71015-107 is used to remove and install airplane components such as the heat exchanger and plenum assembly, the air cycle machine, and the air conditioning pack reheater, in conjunction with the A21001 hoist adapter; the integrated drive generator (IDG) in conjunction with the A71013 or G24013 hoist adapter; ram air turbine (RAT) in conjunction with the B29001 safety screen adapter and the JT9D-7R4D/E engine exhaust sleeve, in conjunction with the A78003 engine exhaust sleeve cradle. Rework A71015-93 to A71015-107 by replacing 2 BB-2HCU14A10.44 with 2 BB-2HLU14A10.44. Refer to AMM 21-51-02, AMM 21-51-03, AMM 21-51-07, AMM 24-11-01, AMM 29-21-00 and AMM 78-11-01 for complete usage instructions.

**WEIGHT:** 400 lbs (181 kg)

**DIMENSIONS:** 30 x 50 x 90 inches (762 x 1270 x 2286 mm)

**NOTE:** A71015-107 supercedes A71015-93.  
A71015-93 supersedes A71015-87.  
A71015 replaces G24011 for future procurement.

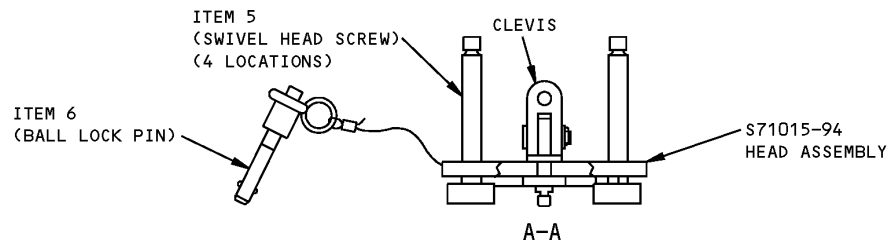
**ILLUSTRATED TOOL AND EQUIPMENT MANUAL**



1676756 S0000306286\_V1

**Engine Accessory Lift Fixture  
Figure 1**

**767**  
**ILLUSTRATED TOOL AND EQUIPMENT MANUAL**



**Engine Accessory Lift Fixture Head Assembly**  
**Figure 2**

REPAIRABLE/REPLACEABLE PARTS			
ITEM NO.	PART NO.	NOMENCLATURE	VENDOR CODE
1	68369	PIVOT PIN	V84561
2	R201**0606080808-24	HOSE ASSEMBLY	V87373
3	12PD04123SLWB01	CASTER	V96266
4	12PD04123SL	CASTER	V96266
5	CL-37-SHS	SWIVEL HEAD SCREW	V99862
6	NAS1356C3C20D	BALL LOCK PIN	
6	NAS1356C2C20D	BALL LOCK PIN (OPTION)	
6	CL-6-BLPB-2.00-S	BALL LOCK PIN (OPTION)	V99862



**767**

## **ILLUSTRATED TOOL AND EQUIPMENT MANUAL**

**PART NUMBER: A24001-1, -5**

**NAME:** HOIST EQUIPMENT - LRU'S MAIN EE BAY

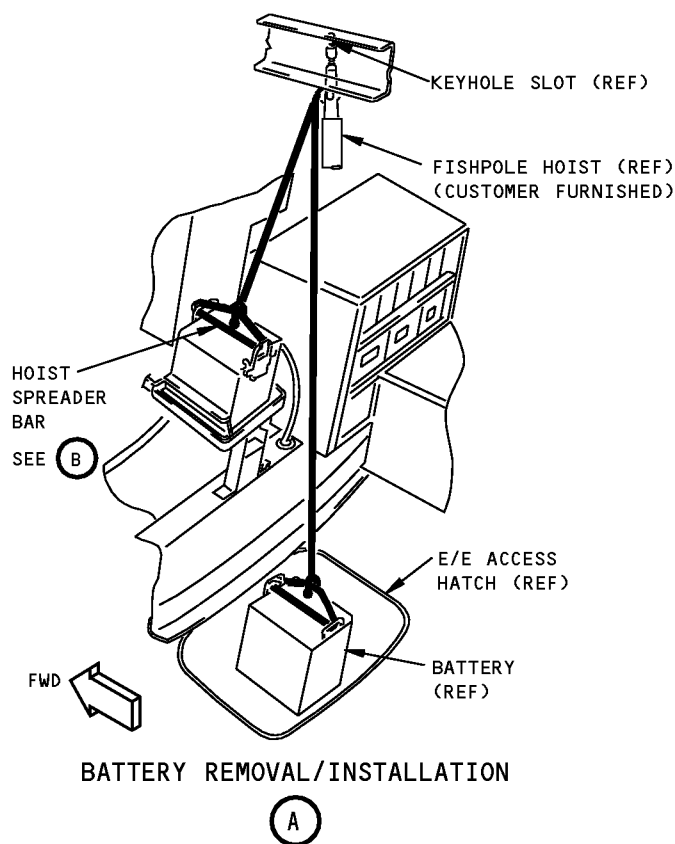
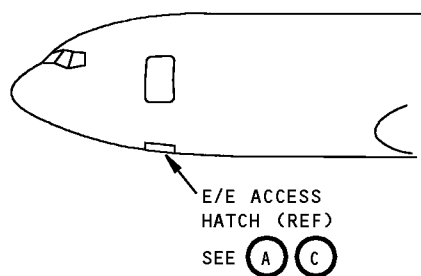
**AIRPLANE MAINTENANCE:** YES

**COMPONENT MAINTENANCE:** NO

**USAGE & DESCRIPTION:** The A24001-1 or -5 hoist equipment is used on all 767 airplanes. This equipment is used for the removal and installation of the main battery or individual electrical equipment boxes in the forward electrical equipment compartment. The -1 spreader bar is used for handling the battery and the -5 pickup equipment is used for handling electrical equipment boxes. A customer supplied fishpole hoist is used to raise or lower the battery/ electrical component through the E/E access hatch. Refer to AMM 24-31-01/ 04 and current A24001 drawing for further usage instructions. The -1 spreader bar consists of a -2 base, a -3 web and a cable assembly. The -5 pickup equipment consists of a -6 fitting assembly and a -8 storage box assembly.

**WEIGHT:** A24001-5 - 1.5 lbs (0.68 kg)

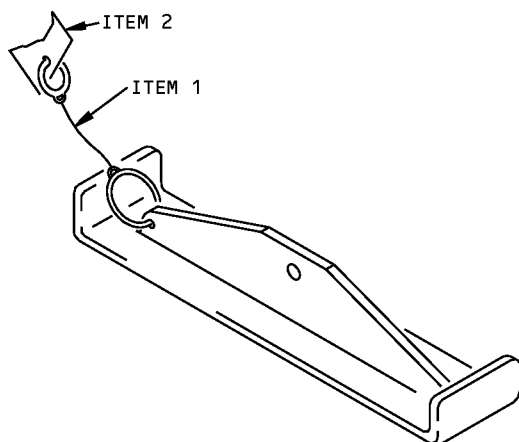
**DIMENSIONS:** A24001-1 - 2 x 3 x 12 inches (51 x 76 x 305 mm)  
A24001-5 - 2 x 3 x 4 inches (51 x 76 x 102 mm)



Main EE Bay LRU Hoist Equipment  
Figure 1 (Sheet 1 of 2)



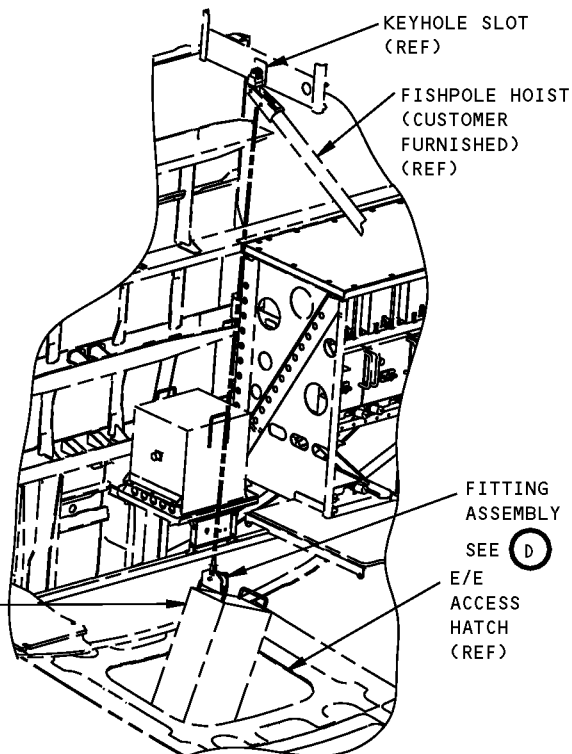
**ILLUSTRATED TOOL AND EQUIPMENT MANUAL**



**A24001-1  
SPREADER BAR**

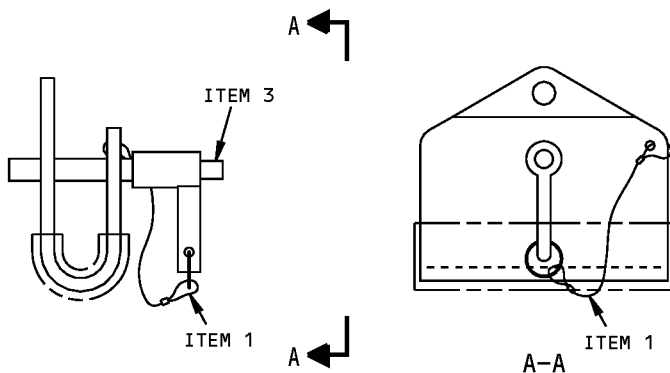
**(B)**

**FWD**



**ELECTRICAL EQUIPMENT  
REMOVAL/INSTALLATION**

**(C)**



**A24001-5  
PICKUP EQUIPMENT**

**(D)**

**Main EE Bay LRU Hoist Equipment  
Figure 1 (Sheet 2 of 2)**



767

## ILLUSTRATED TOOL AND EQUIPMENT MANUAL

REPAIRABLE/REPLACEABLE PARTS			
ITEM NO.	PART NO.	NOMENCLATURE	VENDOR CODE
1	CL-21-KA-10.0LR	CABLE ASSEMBLY	V99862
2	A24001-4	PLACARD	
3	CL-5-BLP-L-1.5	BALL LOCK PIN	V99862

# ILLUSTRATED TOOL AND EQUIPMENT MANUAL

**PART NUMBER: A49006-26**

**NAME:** HOIST EQUIPMENT - APU BATTERY

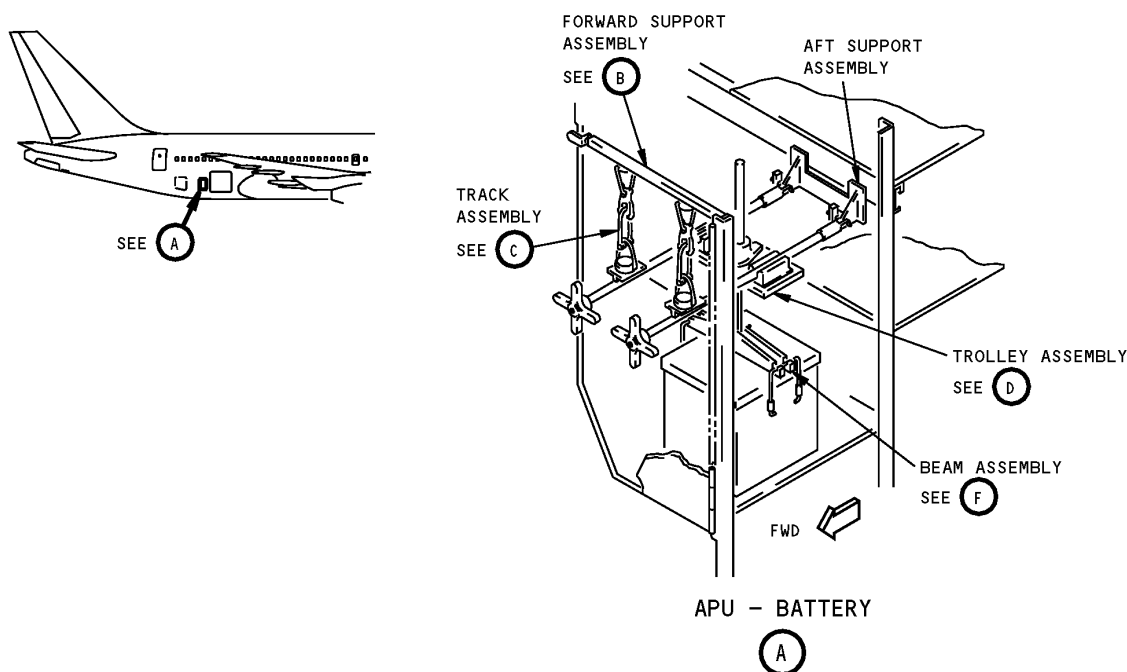
**AIRPLANE MAINTENANCE:** YES

**COMPONENT MAINTENANCE:** NO

**USAGE & DESCRIPTION:** This tool is used to remove/install the Auxiliary Power Unit (APU) battery from the E6 Aft Equipment Rack. The forward and aft support assemblies, fasten to the E6 rack structure while the beam assembly hooks into the battery handles. The ballscrew lift device (actuator) provides vertical movement and the track and trolley assemblies provide for horizontal movement.

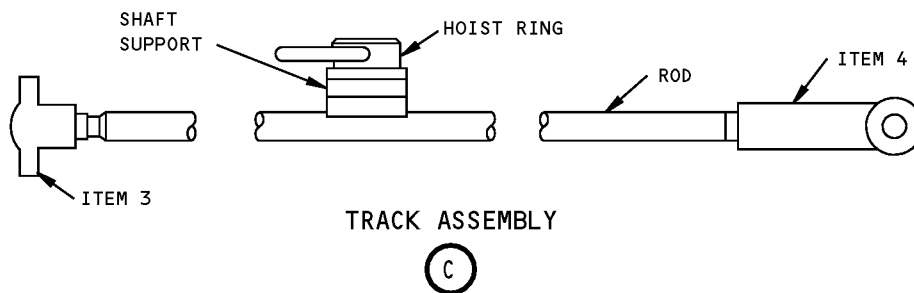
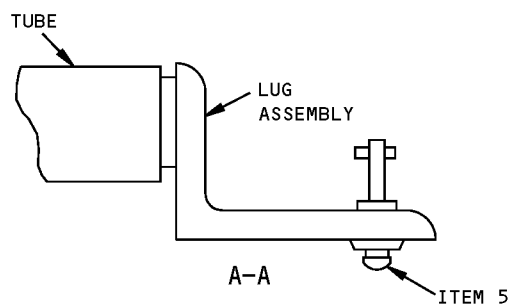
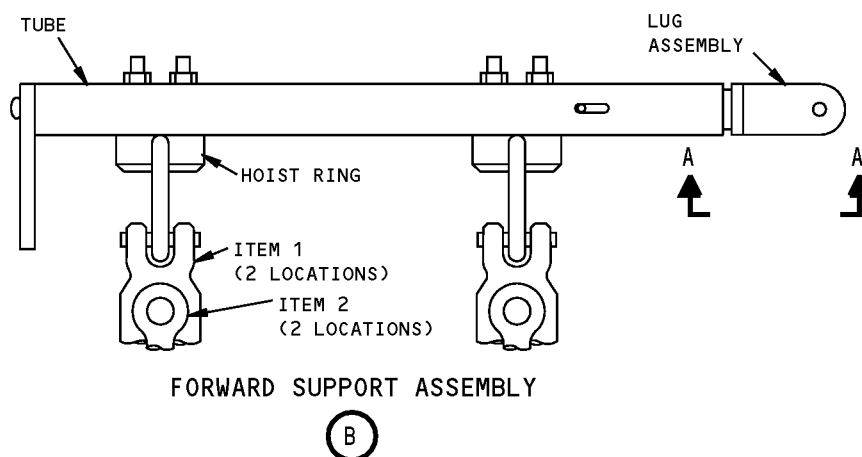
**DIMENSIONS:** 18 x 20 x 40 inches (457 x 508 x 1016 mm)

**NOTE:** A49006-26 replaced by A24006-1.



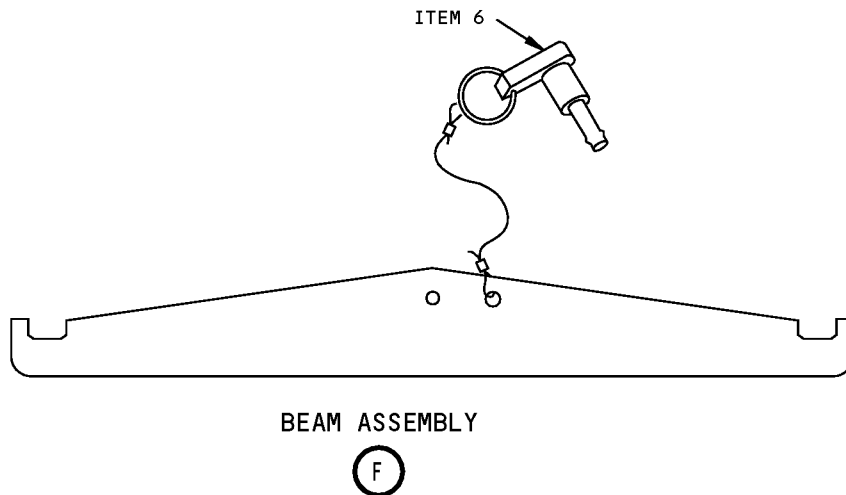
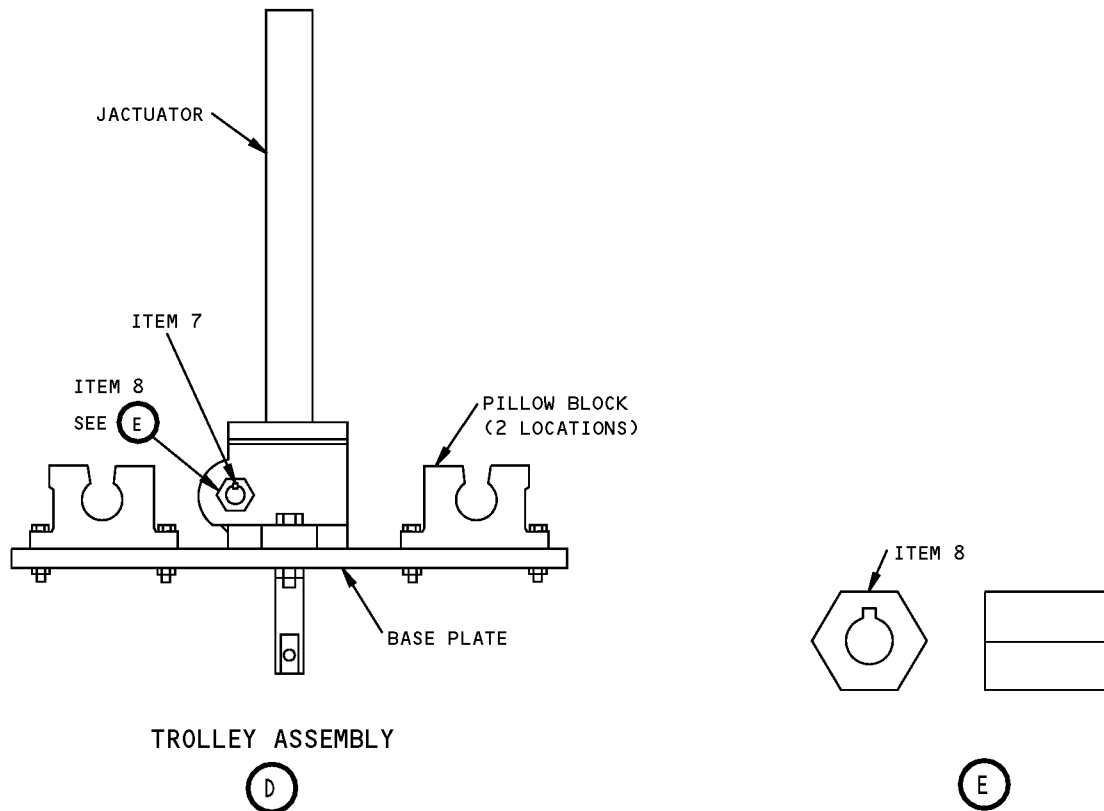
**Auxiliary Power Unit Battery Hoist Equipment  
Figure 1 (Sheet 1 of 3)**

**767**  
**ILLUSTRATED TOOL AND EQUIPMENT MANUAL**



**Auxiliary Power Unit Battery Hoist Equipment**  
**Figure 1 (Sheet 2 of 3)**

# ILLUSTRATED TOOL AND EQUIPMENT MANUAL



**Auxiliary Power Unit Battery Hoist Equipment**  
**Figure 1 (Sheet 3 of 3)**



767

## ILLUSTRATED TOOL AND EQUIPMENT MANUAL

REPAIRABLE/REPLACEABLE PARTS			
ITEM NO.	PART NO.	NOMENCLATURE	VENDOR CODE
1	S247-1/4	DOUBLE CLEVIS LINK	
2	S210-1/2	SHACKLE	V75535
3	CL-100-HK-10	HAND KNOB	V99862
4	45309	TAPPED YOKE	
5	26S8-10	STUD	V94882
6	NAS1333C621F	BALL LOCKPIN	V82831
7	-10	GIB HEAD KEY	
8	-9	HEX	



**767**

## **ILLUSTRATED TOOL AND EQUIPMENT MANUAL**

**PART NUMBER: A24006-1**

**NAME:** HOIST EQUIPMENT - APU BATTERY

**AIRPLANE MAINTENANCE:** YES

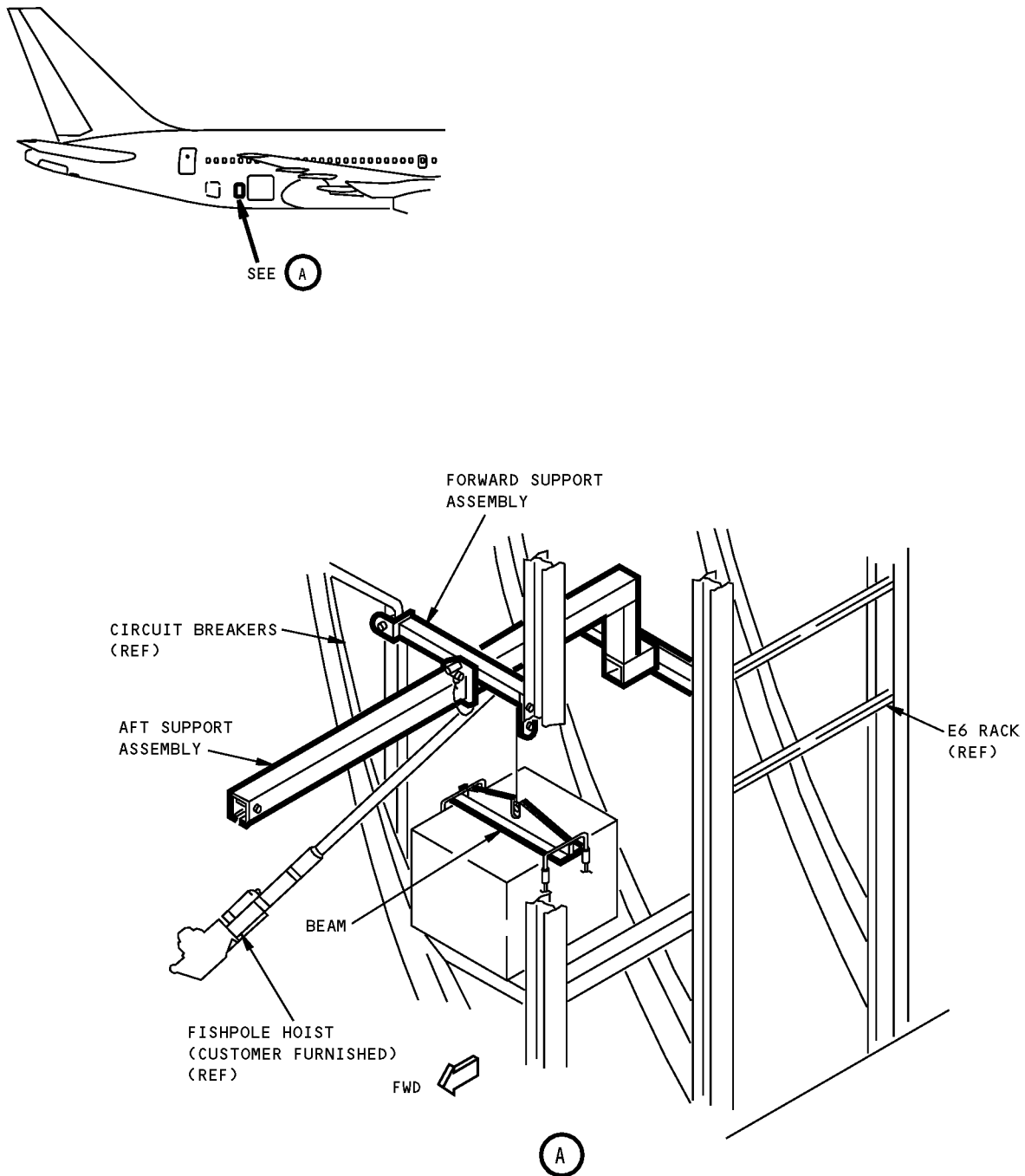
**COMPONENT MAINTENANCE:** NO

**USAGE & DESCRIPTION:** This tool is used to remove and install the Auxiliary Power Unit (APU) battery from the E6 Aft Equipment Rack. Refer to AMM 24-31-04 for further usage instructions. This tool is used on 767-200,-300 and -400 airplanes. The forward and aft support assemblies, fasten to the E6 rack structure while the beam assembly hooks into the battery handles.

**DIMENSIONS:** 6 x 10 x 39 inches (152 x 254 x 991 mm)

**NOTE:** A24006-1 replaces A49006-26.

**767**  
**ILLUSTRATED TOOL AND EQUIPMENT MANUAL**



**APU Battery Hoist Equipment**  
**Figure 1**





**767**

## **ILLUSTRATED TOOL AND EQUIPMENT MANUAL**

**PART NUMBER: G24006-1**

**NAME:** SUPPORT HOOK - ENGINE POWER FEED CABLE, PW4000 ENGINE

**AIRPLANE MAINTENANCE:** YES

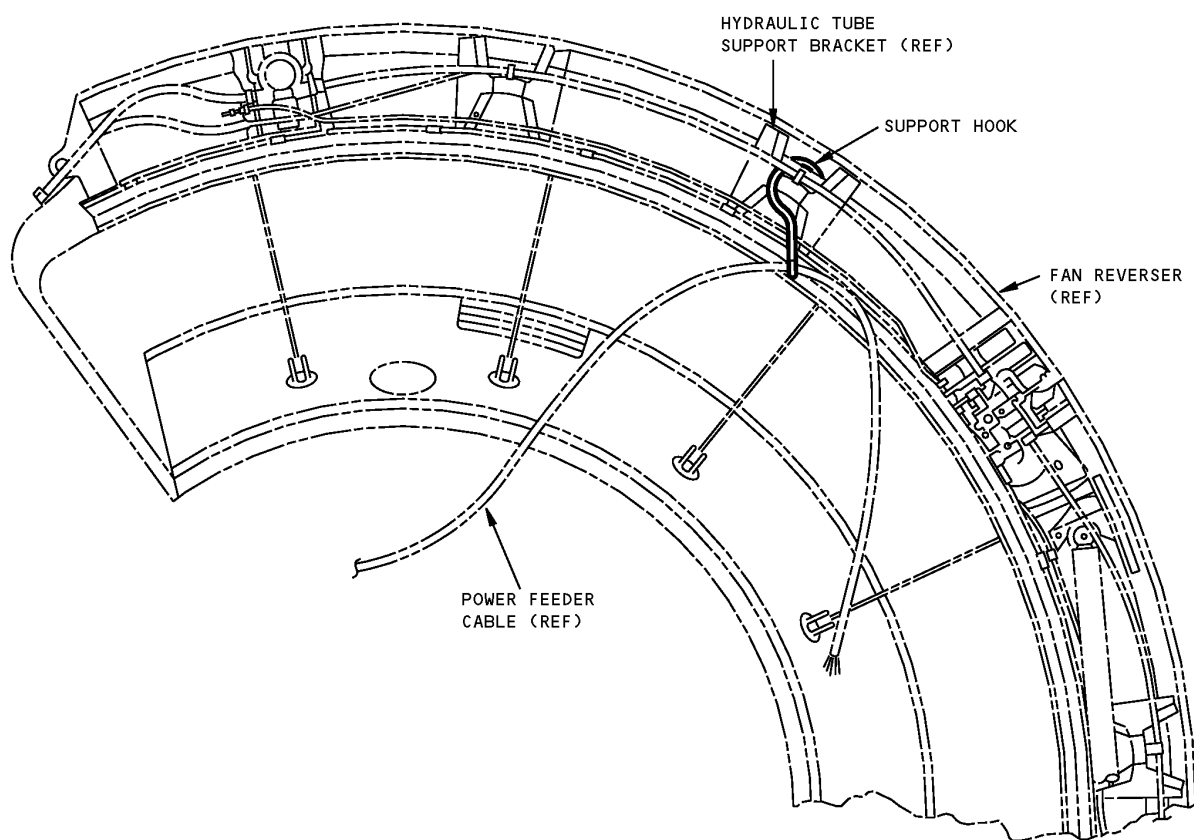
**COMPONENT MAINTENANCE:** NO

**USAGE & DESCRIPTION:** This tool is used to temporarily stow the electrical power feed cable while the engine is being changed.

**WEIGHT:** 1 lb (0.45 kg)

**DIMENSIONS:** 13 x 5 x 3 inches (330 x 127 x 76 mm)

**767**  
**ILLUSTRATED TOOL AND EQUIPMENT MANUAL**



**Engine Power Feed Cable Support Hook, PW4000 Engine**  
**Figure 1**



**767**

## **ILLUSTRATED TOOL AND EQUIPMENT MANUAL**

**PART NUMBER: G24011-1**

**NAME:** HOIST SYSTEM - RB211, CF6-50 AND JT9D ENGINE ACCESSORY

**AIRPLANE MAINTENANCE:** YES

**COMPONENT MAINTENANCE:** NO

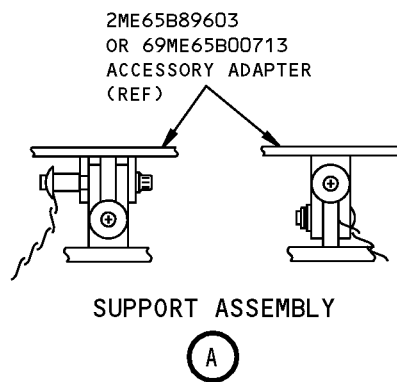
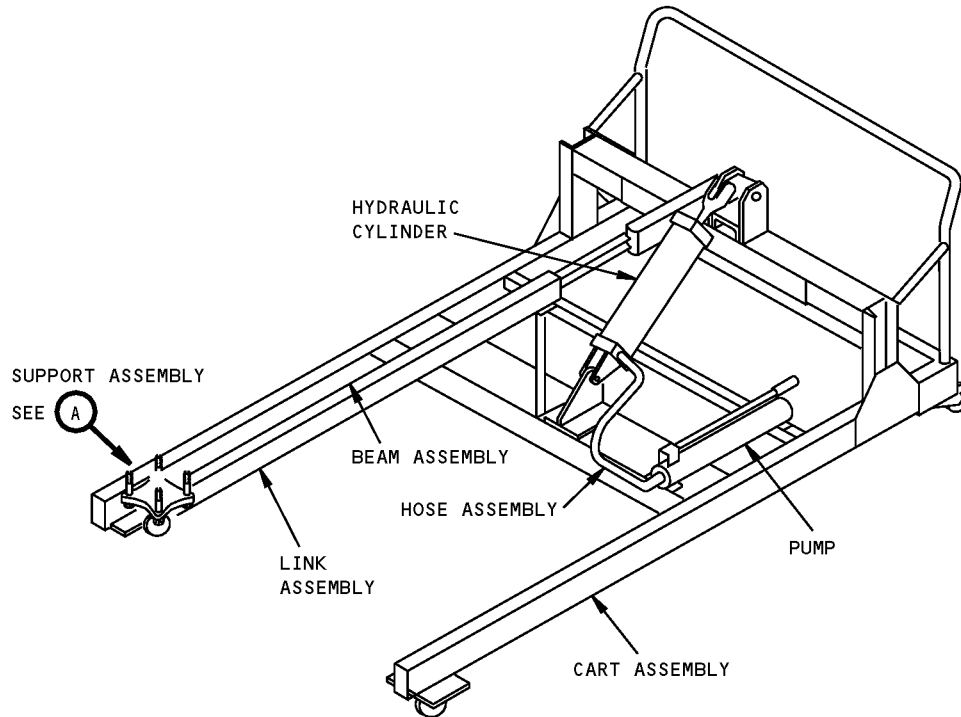
**USAGE & DESCRIPTION:** The hoist system is used to support engine accessories in conjunction with adapters. With the RB211 and CF6-50 engines use adapter 2ME65B89603 or A71013 (preferred). With the JT9D-3 and -7 use 69ME65B00713 adapter. With the JT9D-7Q use 69ME65B00713 plus PWA28941 (fuel pump/control). Refer to AMM 24-00-02, 24-21-01 and 72-61-02 for further usage instructions. The hoist system consists of a cart assembly, a beam assembly, a support assembly, a link assembly, a hydraulic cylinder, a pump, a hose assembly and related hardware.

**WEIGHT:** 350 lbs (159 kg)

**DIMENSIONS:** 36 x 52 x 88 inches (914 x 1321 x 2235 mm)

**NOTE:** G24011 supersedes PME65B89603.  
A71015 replaces G24011 for future procurement.

**767**  
**ILLUSTRATED TOOL AND EQUIPMENT MANUAL**



**RB211, CF6-50 and JT9D Engine Accessory Hoist System**  
**Figure 1**



**767**

## **ILLUSTRATED TOOL AND EQUIPMENT MANUAL**

**PART NUMBER: 900-24999**

**NAME:** INSPECTION PLATE - QAD

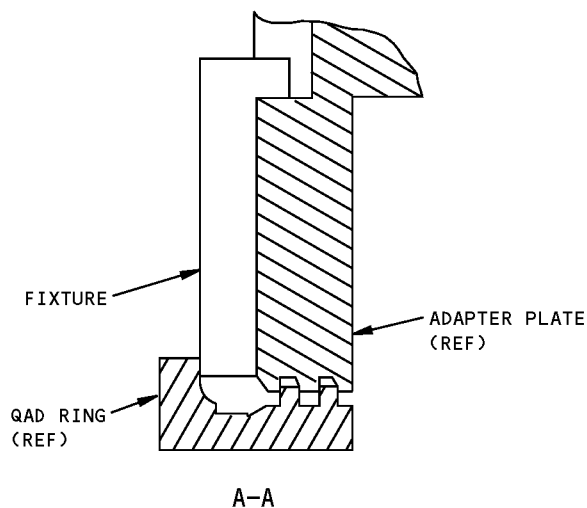
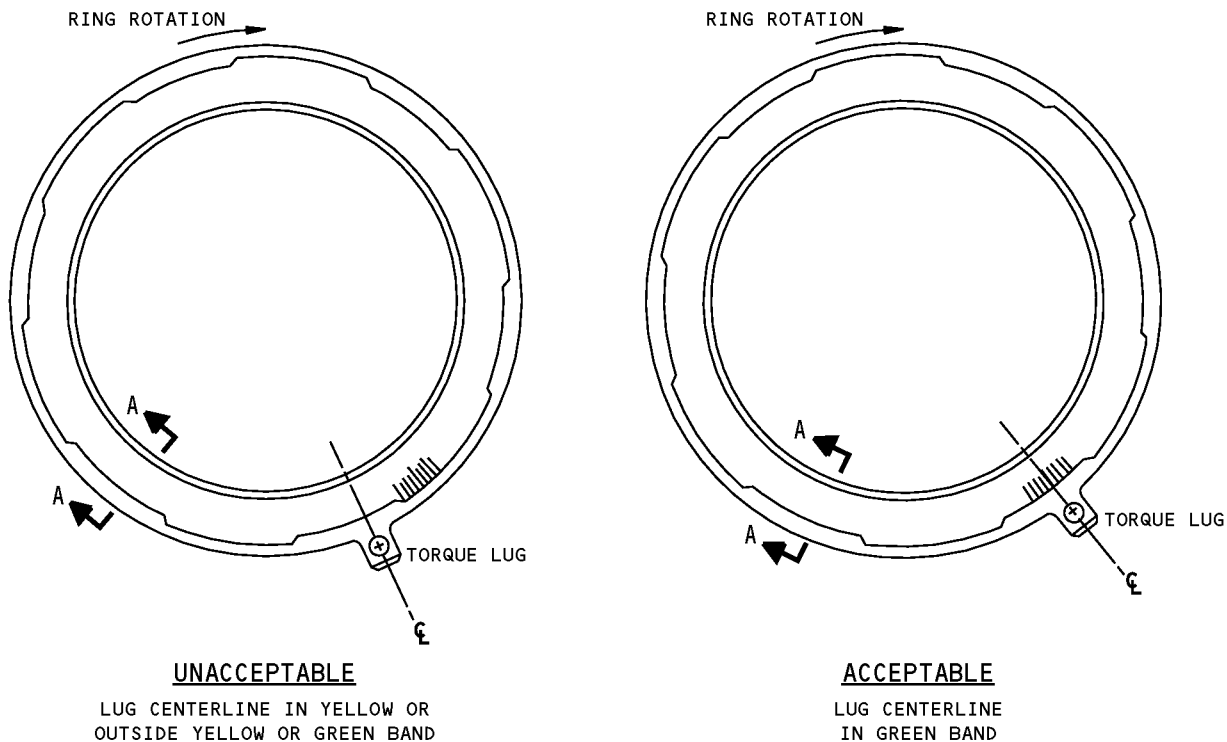
**AIRPLANE MAINTENANCE:** YES

**COMPONENT MAINTENANCE:** NO

**USAGE & DESCRIPTION:** This tool simulates the Integrated Drive Generator (IDG) input flange and is used to check the Quick Attach Detach (QAD) ADAPTER TORQUE INPUT (REF AMM 24-11-03).

**NOTE:** This tool is a supplier proprietary item and can only be obtained from Sundstrand Aviation Operation, 4747 Harrison Ave, P.O. Box 7002, Rockford, Illinois 61125.

# ILLUSTRATED TOOL AND EQUIPMENT MANUAL



**QAD Inspection Plate  
Figure 1**



**767**

## **ILLUSTRATED TOOL AND EQUIPMENT MANUAL**

**PART NUMBER: F80-0-50007**

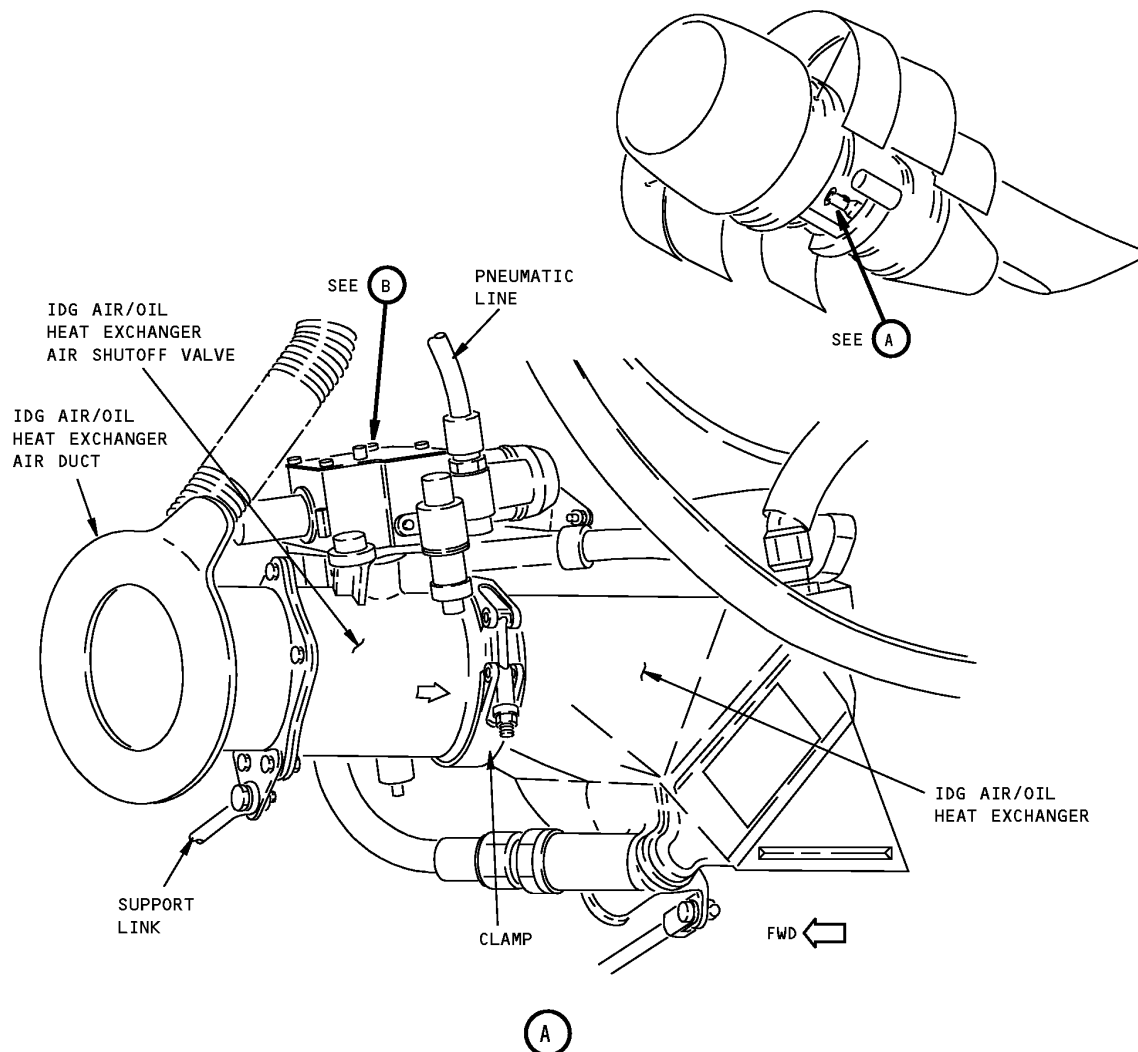
**NAME:** WRENCH, SPECIAL TORQUE

**AIRPLANE MAINTENANCE:** YES

**COMPONENT MAINTENANCE:** YES

**USAGE & DESCRIPTION:** The F80-0-50007 special torque wrench is used on all 767 airplanes with CF6-80A/A2 and JT9D-7R4D engines. This tool is used to remove or install the IDG heat exchanger shutoff valve filter retainer (P/N 2803799-101) on Parker Hannifin IDGS 3.5 inch shutoff valve assembly (P/Ns 2790592-101, -102, -103). Refer to CMM 24-10-01 and AMM 24-11-07 for further usage instructions.

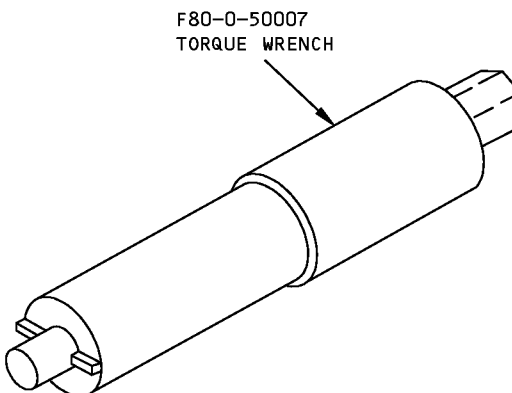
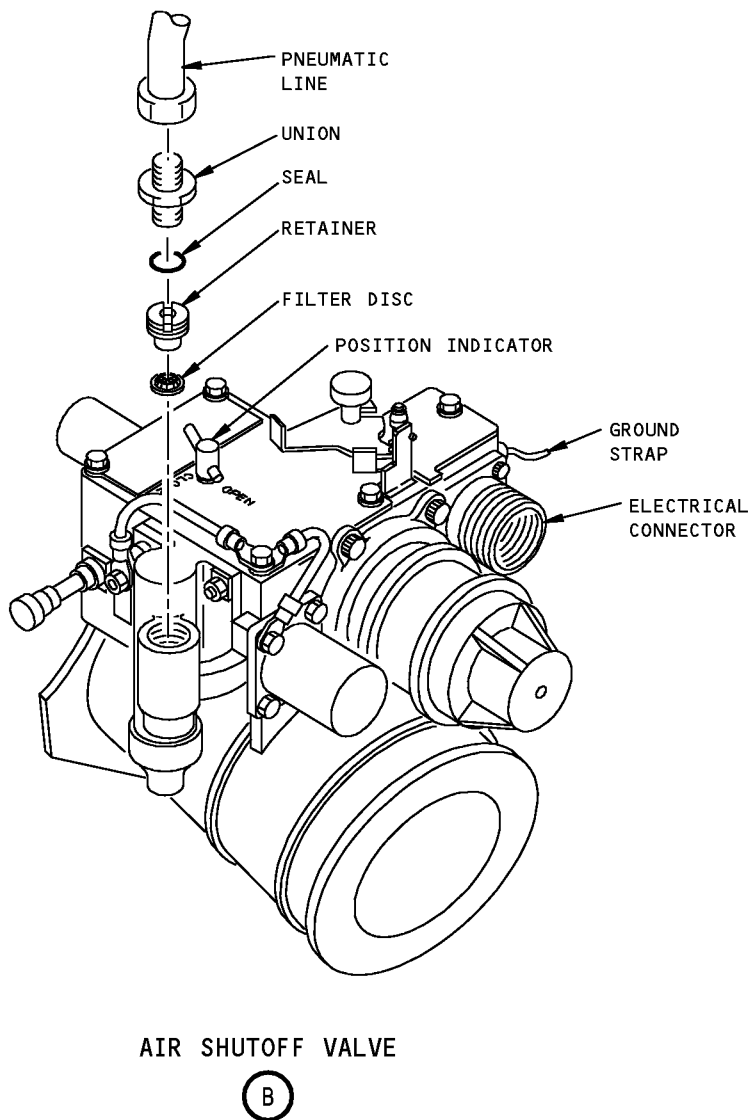
**NOTE:** This tool is a supplier proprietary item and can only be obtained from Parker Hannifin, Irvine, California 92618.



**IDG Air/Oil Heat Exchanger Air Shutoff Valve Location  
Figure 1**



767  
ILLUSTRATED TOOL AND EQUIPMENT MANUAL



Special Torque Wrench  
Figure 2



767

## ILLUSTRATED TOOL AND EQUIPMENT MANUAL

**PART NUMBER: G24005-24**

**NAME:** DISPATCH EQUIPMENT - IDG, CF6-80C2 ENGINE

**AIRPLANE MAINTENANCE:** YES

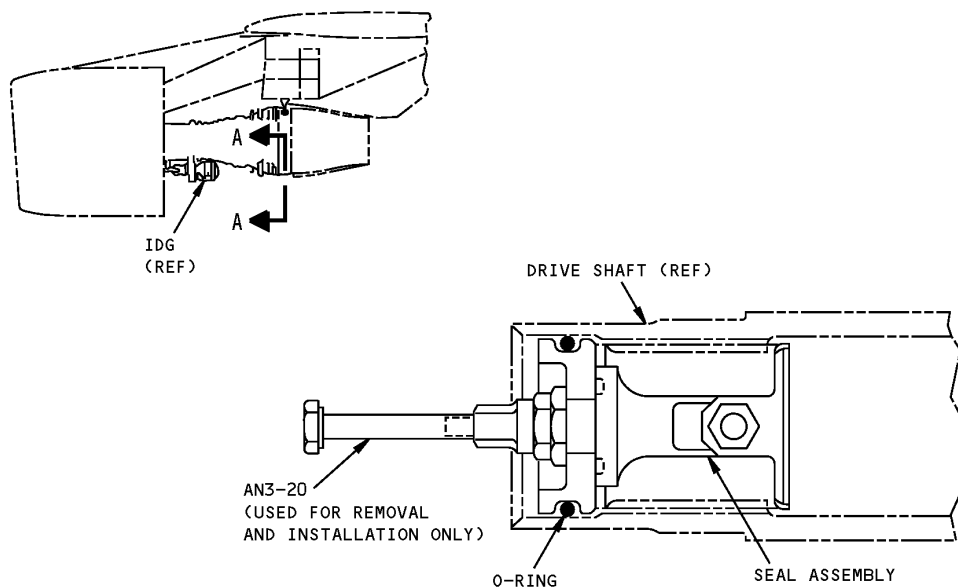
**COMPONENT MAINTENANCE:** NO

**USAGE & DESCRIPTION:** This tool is used to prepare the engine for use with the integrated drive generator removed. See Maintenance Manual 24-11-01 and 24-11-17 for complete instructions. This tool consists of a cover assembly, bypass tube assembly, cap, o-ring and seal assembly.

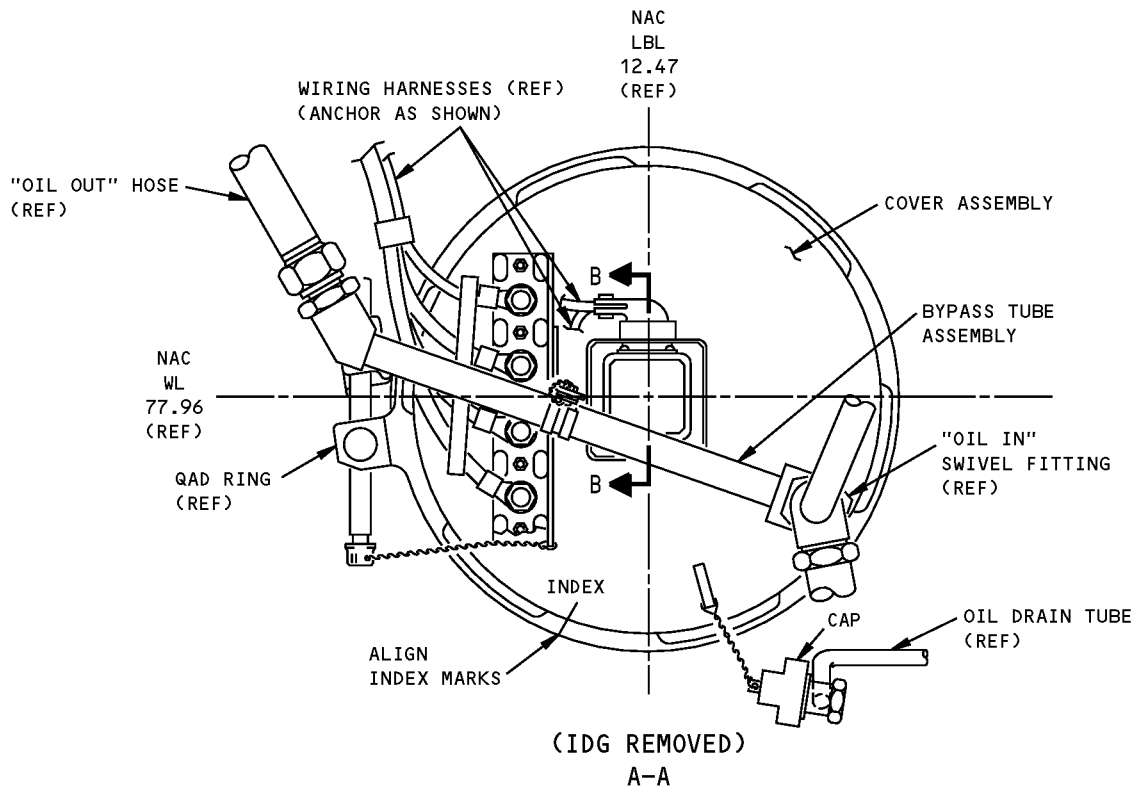
**WEIGHT:** 13 lbs (6 kg)

**DIMENSIONS:** 11 x 12 x 15 inches (279 x 305 x 381 mm)

**NOTE:** G24005-24 supersedes G24005-1.



**IDG, CF6-80C2 Engine Dispatch Equipment**  
**Figure 1 (Sheet 1 of 2)**



**IDG, CF6-80C2 Engine Dispatch Equipment  
Figure 1 (Sheet 2 of 2)**



**767**

## **ILLUSTRATED TOOL AND EQUIPMENT MANUAL**

**PART NUMBER: G24009-1**

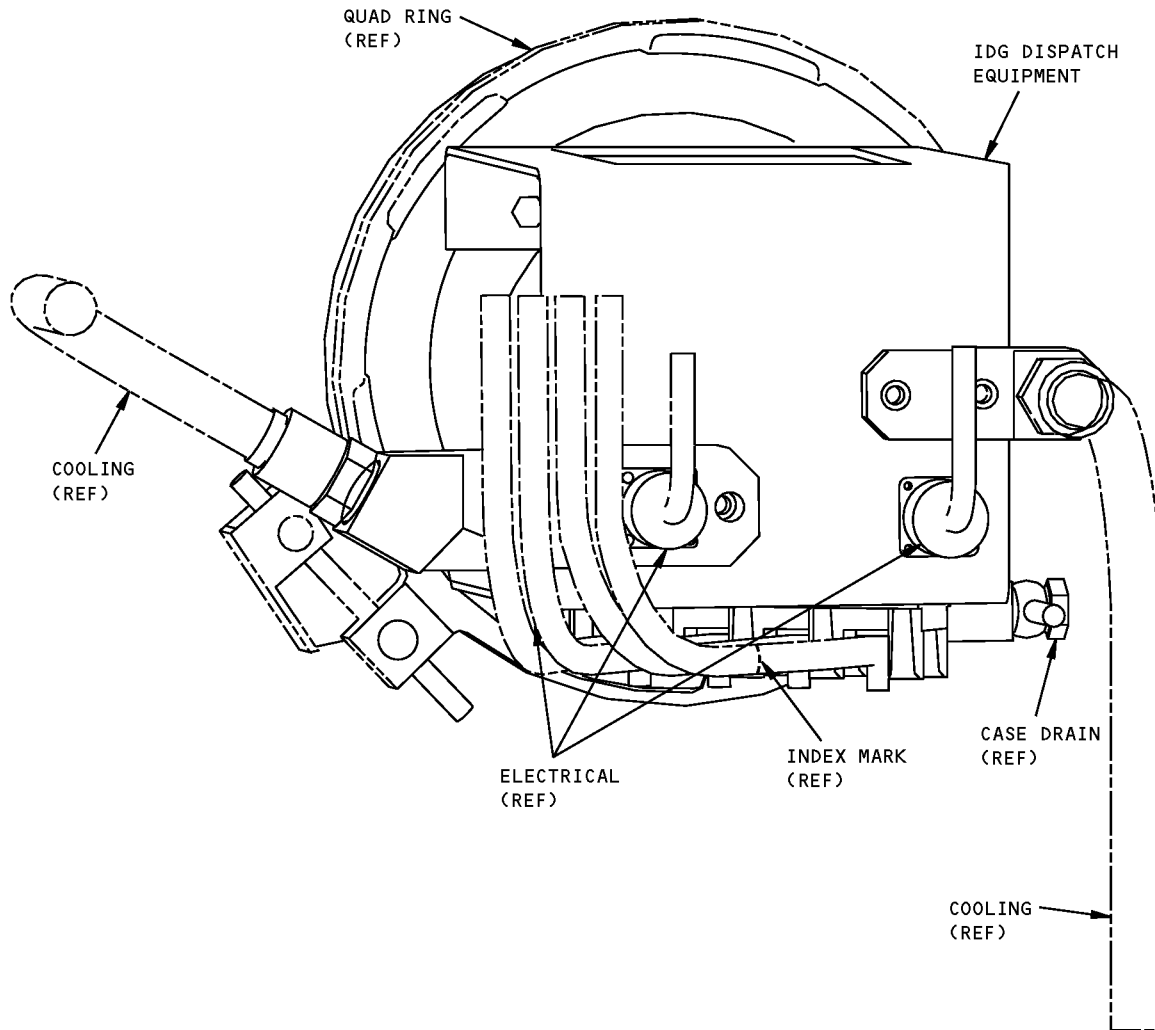
**NAME:** IDG DISPATCH KIT - RB211-524 ENGINE

**AIRPLANE MAINTENANCE:** YES

**COMPONENT MAINTENANCE:** NO

**USAGE & DESCRIPTION:** This tool is used to prepare the engine for use with the integrated drive generator. This tool consists of a -5 support assembly, -8, and -13 coolant support assemblies, -10 cover plate assembly, -12 receptacle assembly and a -3 box assembly.

**DIMENSIONS:** 11 x 11 x 12 inches (279 x 279 x 305 mm)



**RB211-524 Engine IDG Dispatch Kit**  
**Figure 1**



**767**  
**ILLUSTRATED TOOL AND EQUIPMENT MANUAL**

**PART NUMBER: A24011-1**

**NAME:** HOIST ADAPTER ASSEMBLY - INTEGRATED DRIVE GENERATOR

**AIRPLANE MAINTENANCE:** YES

**COMPONENT MAINTENANCE:** NO

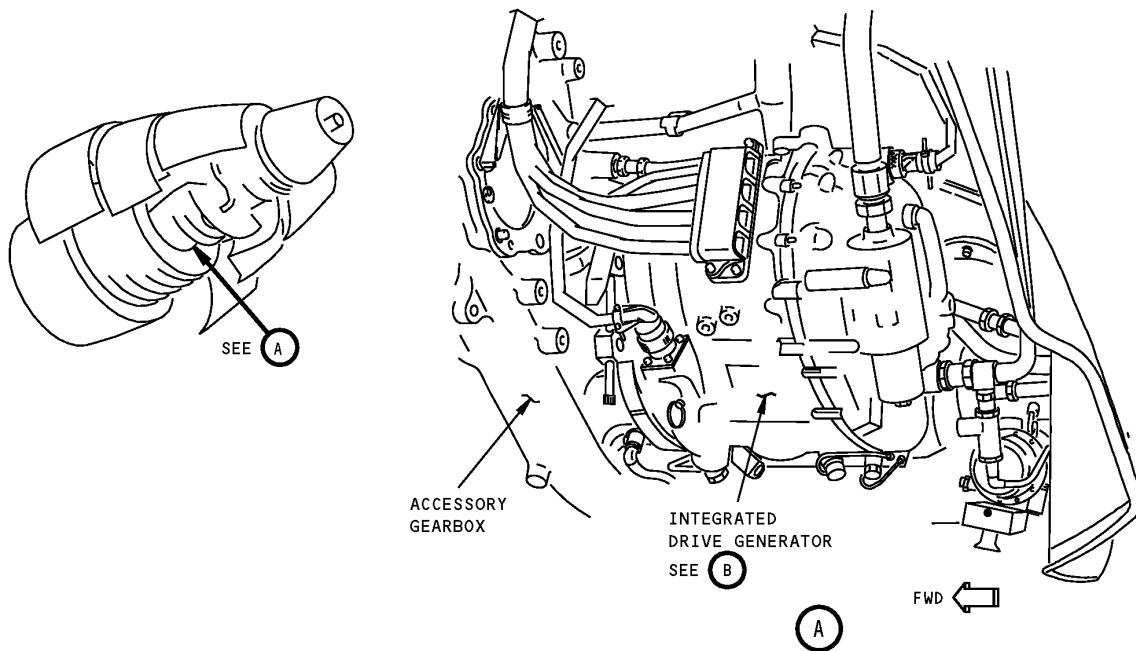
**USAGE & DESCRIPTION:** The A24011-1 hoist adapter assembly is used on 767-400 airplanes equipped with General Electric engines. This tool is used in conjunction with either J20009 hydraulic telescoping jack or the A20001 boom hoist and the J20002 load positioner to remove and install the integrated drive generator (IDG) from the engine. Refer to AMM 24-11-01 and current A24011 drawing for additional usage instructions. A24011-1 consists of an A24011-2 hoist adapter and a storage box.

**NOTE:** For airplanes other than 767-400, refer to A71013 hoist adapter and A71015 lift fixture.

**WEIGHT:** 49 lbs (22 kg)

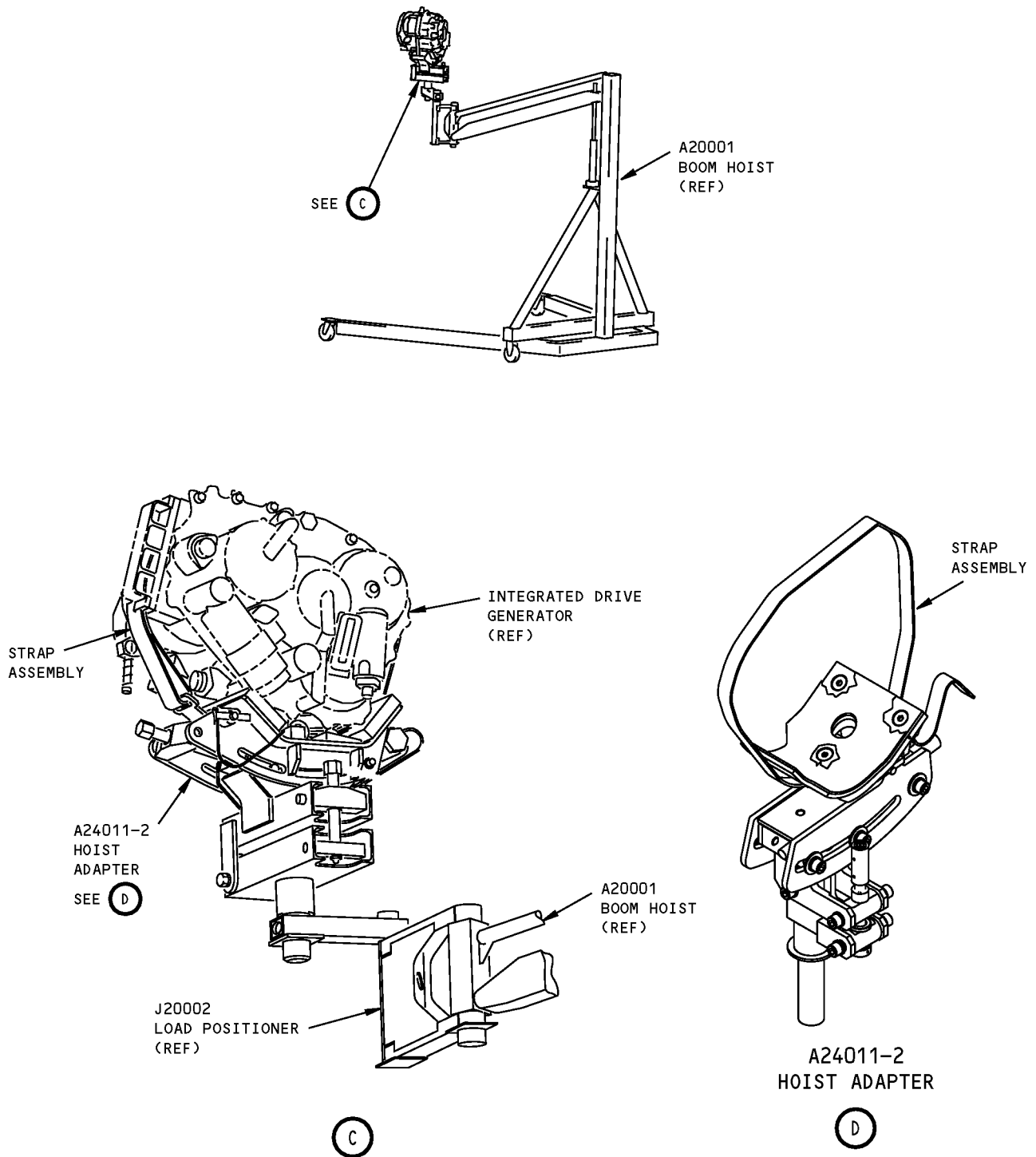
**DIMENSIONS:** 8 x 14 x 22 inches (203 x 356 x 559 mm)

**NOTE:** A24011-1 replaces J24002-73 for future procurement.



**Integrated Drive Generator Hoist Adapter Assembly**  
**Figure 1 (Sheet 1 of 2)**

**ILLUSTRATED TOOL AND EQUIPMENT MANUAL**



**Integrated Drive Generator Hoist Adapter Assembly  
Figure 1 (Sheet 2 of 2)**





767

## ILLUSTRATED TOOL AND EQUIPMENT MANUAL

**PART NUMBER: G24013-1**

**NAME:** ACCESSORY ADAPTER - HOIST SYSTEM RB211 AND CF6-50 ENGINES

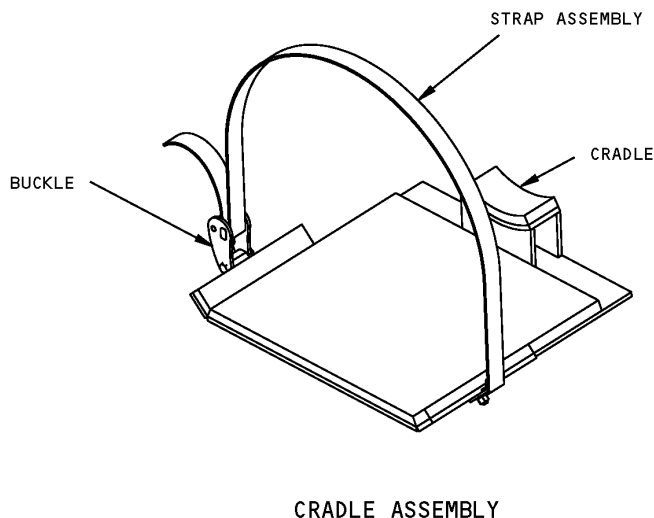
**AIRPLANE MAINTENANCE:** YES

**COMPONENT MAINTENANCE:** NO

**USAGE & DESCRIPTION:** This tool is used in conjunction with G24011 to provide for support of the integrated drive generator (IDG) on RB211 engine and the constant speed drive and generator for CF6-50 engine. Refer to AMM 24-11-00 for further usage instructions. This tool consists of a cradle assembly and a storage box assembly. The cradle assembly consists of a cradle, a strap assembly, a buckle and related hardware.

**DIMENSIONS:** 5 x 15 x 18 inches (127 x 381 x 457 mm)

**NOTE:** A71013 replaces G24013 for future procurement.  
G24013 replaces 2ME65B89603 for future procurement.



**Hoist System RB211 and CF6-50 Engines Accessory Adapter  
Figure 1**



767

## ILLUSTRATED TOOL AND EQUIPMENT MANUAL

**PART NUMBER: 2ME65B89603**

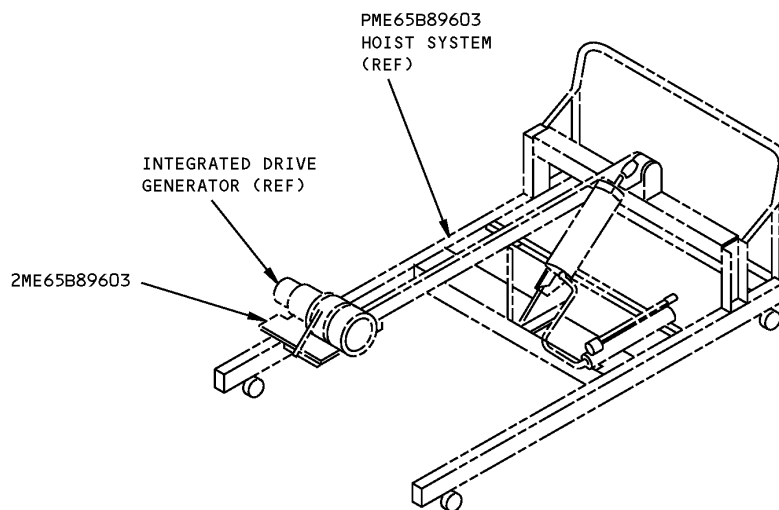
**NAME:** ACCESSORY ADAPTER - HOIST SYSTEM, RB211-524, CF6-50 ENGINES

**AIRPLANE MAINTENANCE:** YES

**COMPONENT MAINTENANCE:** NO

**USAGE & DESCRIPTION:** This tool is used to provide for support of the integrated drive generators for RB211 engine and the constant speed drive and generator for the CF6-50 engine, during accessory installation. The adapter is used with and mounts to PME65B89603 accessory hoist system. The accessory adapter is a steel welded tray incorporating strap tie loops, attachment provisions to the hoist system, and neoprene padding on the accessory contact surface.

**NOTE:** A71013 replaces 2ME65B89603 for future procurement.  
G24013 replaces 2ME65B89603 for future procurement.



**Hoist System RB211-524 and CF6-50 Engines Accessory Adapter  
Figure 1**



**767**

## **ILLUSTRATED TOOL AND EQUIPMENT MANUAL**

**PART NUMBER: A24012-1**

**NAME:** DISPATCH KIT - INTEGRATED DRIVE GENERATOR, PRATT AND WHITNEY ENGINES

**AIRPLANE MAINTENANCE:** YES

**COMPONENT MAINTENANCE:** NO

**USAGE & DESCRIPTION:** A24012-1 is used on all 767 airplanes with PW4000 and JT9D-7R4 D/Egines installed. A24012-1 allows the airplane to be flown when an engine's integrated drive generator has been removed. The A24012-1 dispatch kit consists of a -2 dispatch assembly and a -3 seal assembly. The -2 contains the frame assembly, connector assembly and connecting hardware. The -3 seal assembly contains o-ring seals and a special Pratt and Whitney 776441 nut. The dispatch kit is contained in a storage box.

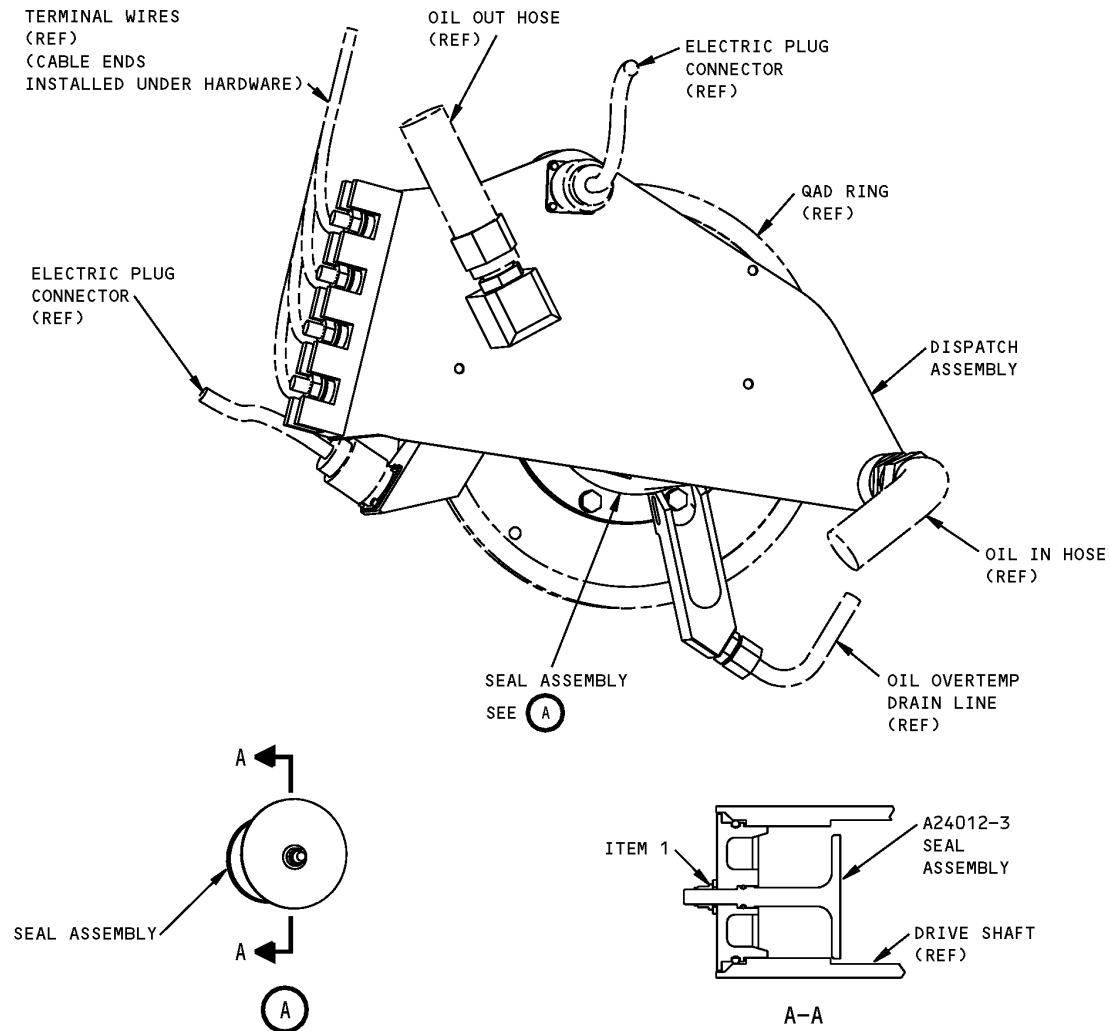
**WEIGHT:** 25 lbs (11 kg)

**DIMENSIONS:** 15 x 15 x 18 inches (381 x 381 x 457 mm)

**NOTE:** A24012-1 replaces G24007-1 for future procurement.

# 767

## ILLUSTRATED TOOL AND EQUIPMENT MANUAL



Integrated Drive Generator, Pratt and Whitney Engines, Dispatch Kit  
Figure 1

REPAIRABLE/REPLACEABLE PARTS			
ITEM NO.	PART NO.	NOMENCLATURE	VENDOR CODE
1	776441	NUT	V3B116



767

## ILLUSTRATED TOOL AND EQUIPMENT MANUAL

### PART NUMBER: J24015-1

**NAME:** Pressure Test Equipment - Engine Generators

**AIRPLANE MAINTENANCE:** YES

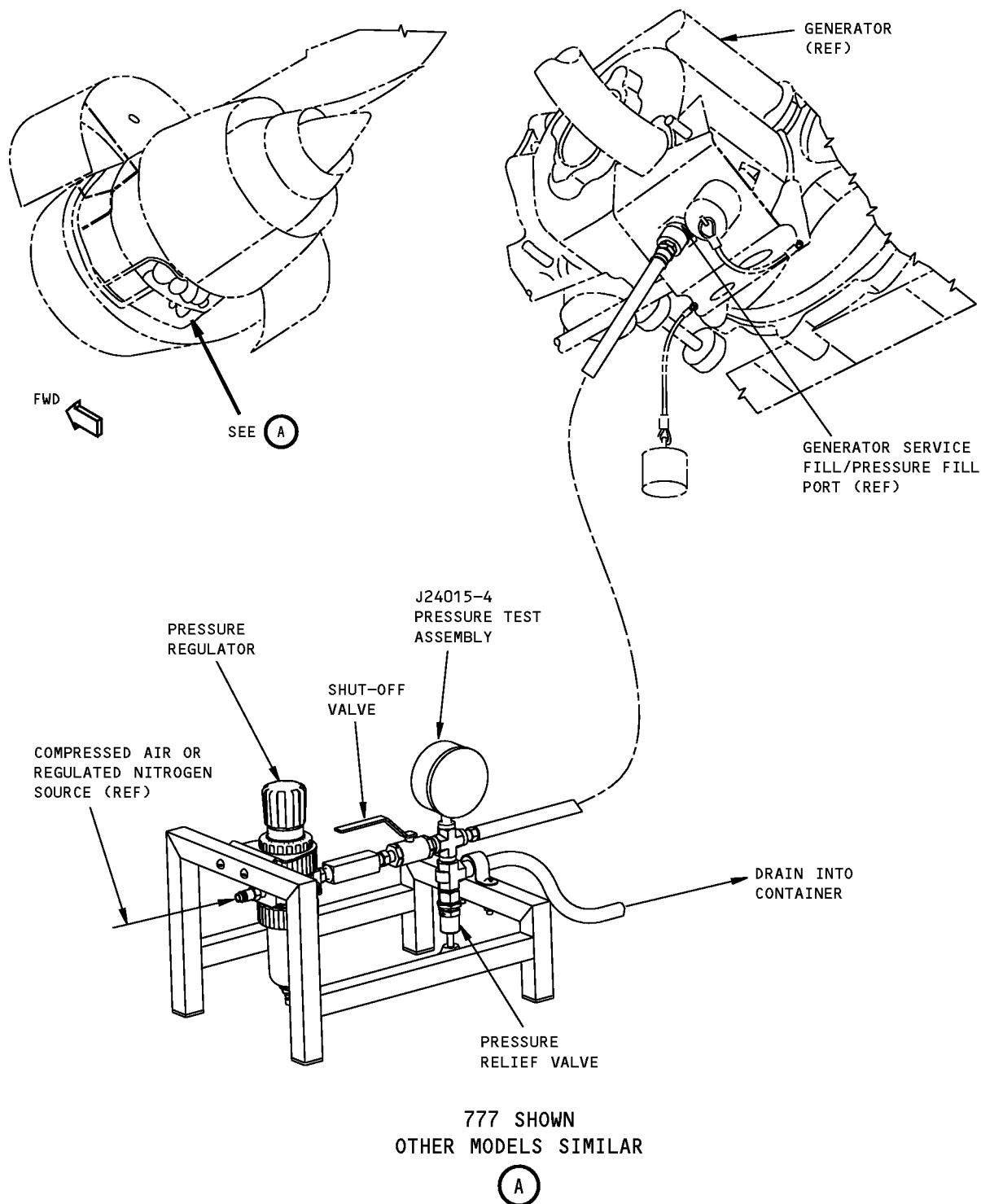
**COMPONENT MAINTENANCE:** NO

**USAGE & DESCRIPTION:** The J24015-1 pressure test equipment is used on all 767 airplanes. J24015 applies compressed air or nitrogen to the integrated drive generator (IDG) oil system through the IDG pressure fill fitting. The pressure is monitored for a pressure decrease. A continuous decrease in pressure indicates a leak in the system. Refer to the current J24015 drawing and AMM 24-11-00 for complete usage instructions. J24015-1 consists of a J24015-4 pressure test assembly contained in a storage box.

**WEIGHT:** 21 lbs (10 kg)

**DIMENSIONS:** 12 x 15 x 18 inches (305 x 381 x 457 mm)

**ILLUSTRATED TOOL AND EQUIPMENT MANUAL**



1669099 S0000304988\_V1

**Engine Generators Pressure Test Equipment  
Figure 1**

# ILLUSTRATED TOOL AND EQUIPMENT MANUAL

**PART NUMBER: A24004-1, -2**

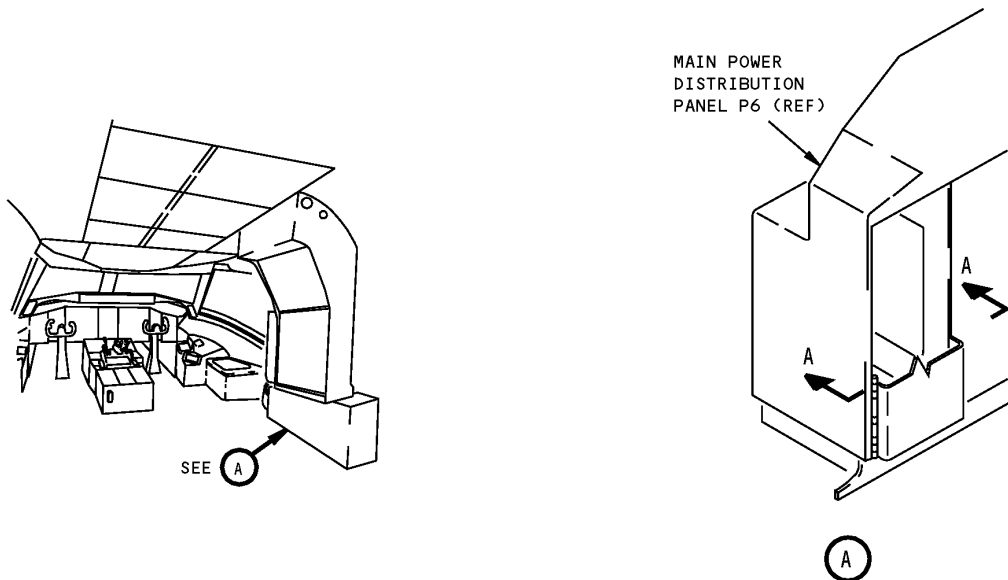
**NAME:** TEST RELAY - ISOLATION REQUEST, POWER DISTRIBUTION SYSTEM

**AIRPLANE MAINTENANCE:** YES

**COMPONENT MAINTENANCE:** NO

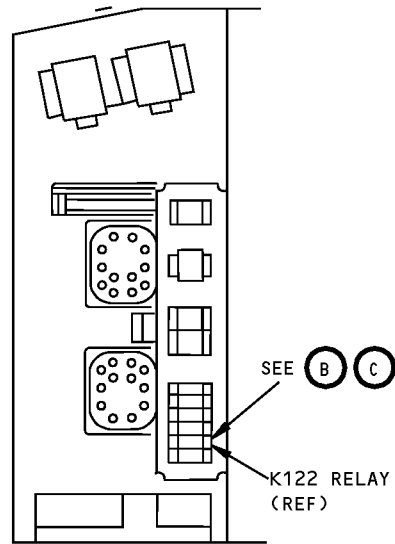
**USAGE & DESCRIPTION:** To test AC power system switching in autoland mode. The tool consists of 2 plug-in test relay assemblies. The -1 relay is used on airplanes with BACR13CF relay. The -2 relay is used on airplanes with BACR13CG relay. The -2 is also used on 757 airplanes with BACR13CG relay. Refer to AMM 24-22-00 for further usage instructions. The -1 consists of a -3 test relay assembly. The -2 consists of a -4 test relay assembly. Both -1 and -2 have storage boxes.

**DIMENSIONS:** 3 x 5 x 6 inches (76 x 127 x 152 mm)

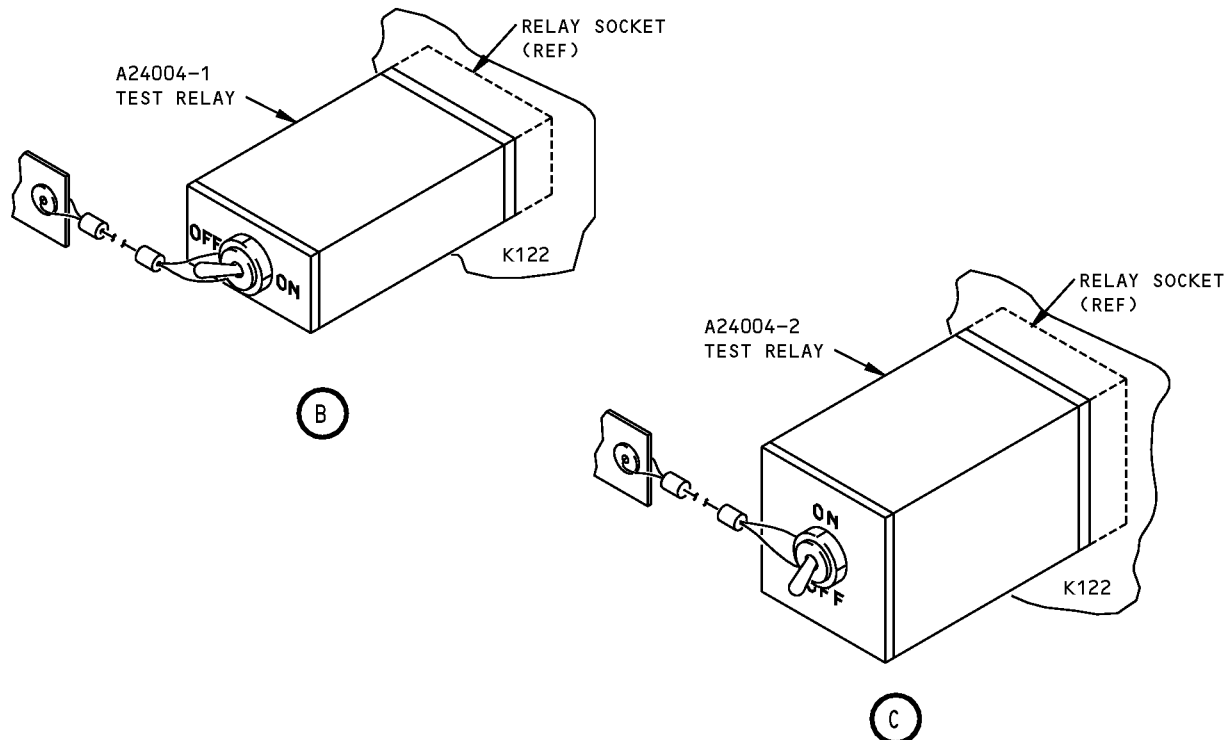


**Power Distribution System Isolation Request Test Relay  
Figure 1 (Sheet 1 of 2)**

**767**  
**ILLUSTRATED TOOL AND EQUIPMENT MANUAL**



**COMPONENT LOCATION**  
**A-A**



**Power Distribution System Isolation Request Test Relay**  
**Figure 1 (Sheet 2 of 2)**





767

## ILLUSTRATED TOOL AND EQUIPMENT MANUAL

**PART NUMBER: A24008-19, -27, -37**

**NAME:** TEST BOX - HYDRAULIC MOTOR DRIVEN GENERATOR CONTROL UNIT

**AIRPLANE MAINTENANCE:** YES

**COMPONENT MAINTENANCE:** NO

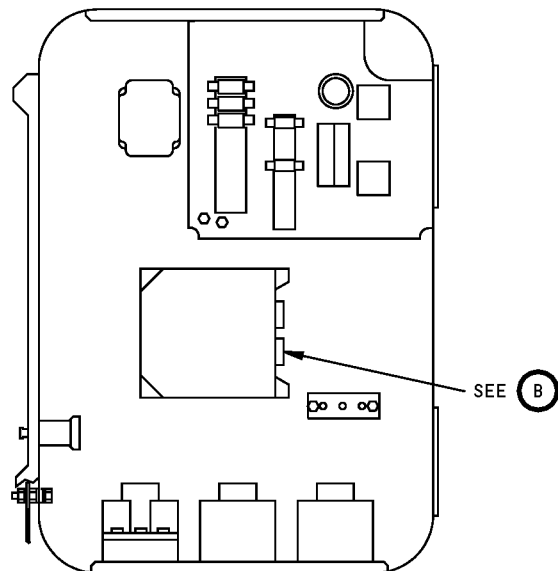
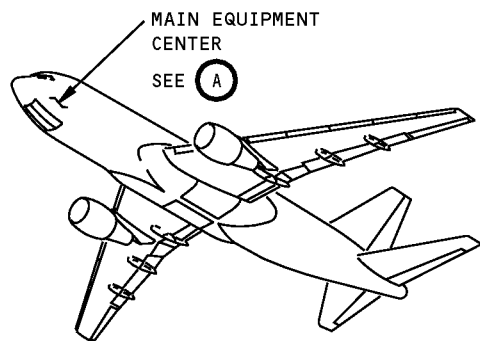
**USAGE & DESCRIPTION:** The A24008-19, -27, and -37 test boxes are used on 767 airplanes that are equipped with Abex (part numbers 21428 or 21428-01) generator control units (GCU) used for controlling the Abex 5KVA hydraulic motor driven generators (HMG). The A24008 is used to simulate hydraulic motor driven generator control unit operation. Refer to AMM 24-25-00 and current A24008 drawing for additional usage instructions. A24008-19 consists of an A24008-20 test box assembly contained in a storage box. A24008-27 consists of an A24008-28 test box assembly contained in storage box. A24008-37 consists of an A24008-38 test box assembly contained in a storage box.

**WEIGHT:** A24008-19, -27 - 5 lbs (2.3 kg)  
A24008-37 - 12 lbs (5.4 kg)

**DIMENSIONS:** A24008-19, -27 - 3 x 5 x 7 inches (76 x 127 x 178 mm)  
A24008-37 - 4 x 10 x 17 inches (102 x 254 x 432 mm)

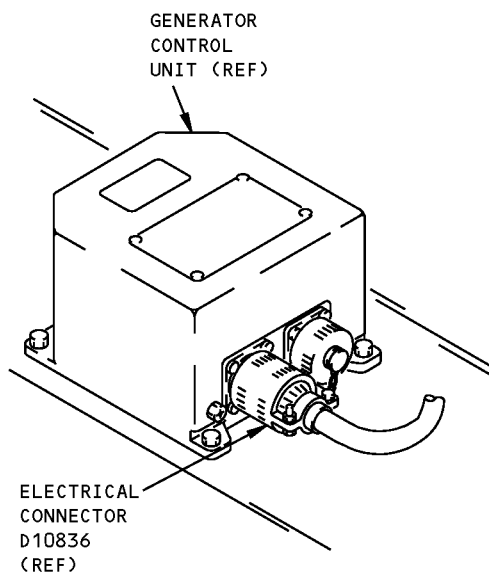
**NOTE:** A24008-37 replaces A24008-19 and A24008-27 for future procurement.  
A24008-19 supercedes A24008-1.

**ILLUSTRATED TOOL AND EQUIPMENT MANUAL**



**HYDRAULIC GENERATOR POWER PANEL P65**

(A)

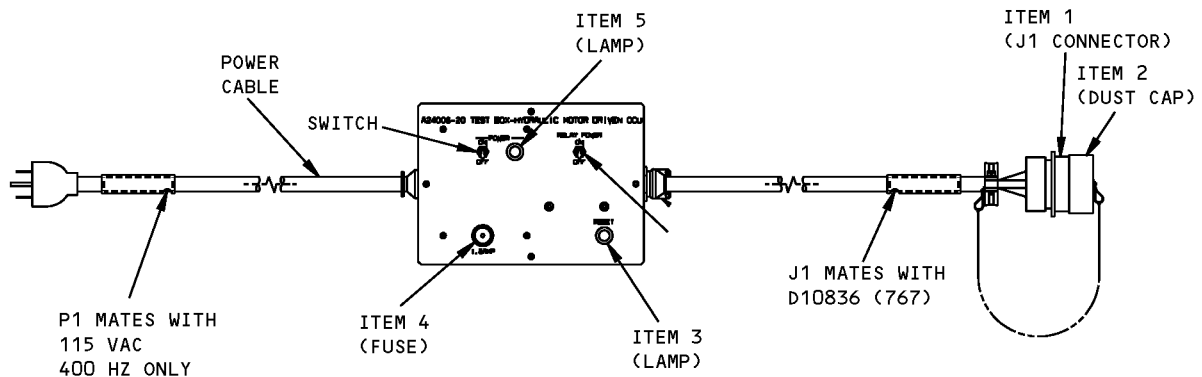


**HYDRAULIC MOTOR DRIVEN  
GENERATOR CONTROL UNIT**

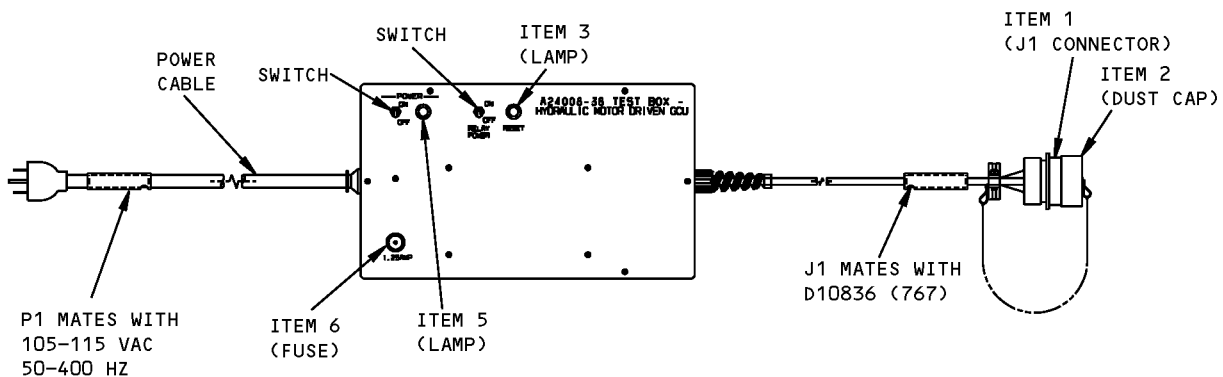
(B)

**Hydraulic Motor Driven Generator Control Unit Test Box  
Figure 1 (Sheet 1 of 2)**

# 767 ILLUSTRATED TOOL AND EQUIPMENT MANUAL



A24008-20 TEST BOX SHOWN  
A24008-28 SIMILAR



A24008-38 TEST BOX

Hydraulic Motor Driven Generator Control Unit Test Box  
Figure 1 (Sheet 2 of 2)



767

## ILLUSTRATED TOOL AND EQUIPMENT MANUAL

REPAIRABLE/REPLACEABLE PARTS			
ITEM NO.	PART NO.	NOMENCLATURE	VENDOR CODE
1	M83723/83R1624	CONNECTOR	
2	M83723/60-116AC	CAP, DUST	
3	507-4761-3331-500	LAMP, 28V DC	V83330
4	31201-5	FUSE	V75915
5	507-5337-0931-670	LAMP	V83330
6	3121.25	FUSE	V83330

# 767

## ILLUSTRATED TOOL AND EQUIPMENT MANUAL

**PART NUMBER: A49002-1, -2**

**NAME:** LIFTING EYE - APU GENERATOR

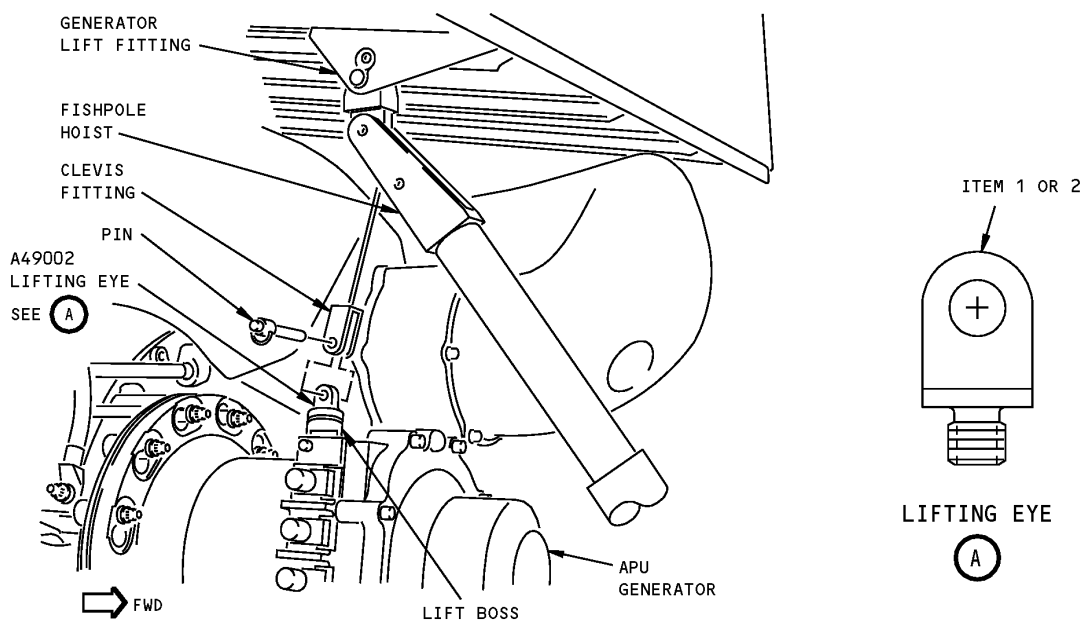
**AIRPLANE MAINTENANCE:** YES

**COMPONENT MAINTENANCE:** NO

**USAGE & DESCRIPTION:** The A49002-1 is used on 767-200, -300 airplanes with a helicoil insert in the lift boss of the generator (3/8-24UNF threads). The A49002-2 is used on 767-200, -300, -400 airplanes with a stainless steel insert in the lift boss of the generator (3/8-16UNF threads). A49002-1 and -2 is used in conjunction with a fishpole hoist as a lift point for removal/installation of the APU generator. Refer to AMM 24-21-01 for complete usage instructions.

**WEIGHT:** 0.5 lbs (0.2 kg)

**DIMENSIONS:** 1 x 1.5 inches (25 x 38 mm)



**APU Generator Lifting Eye**  
**Figure 1**

REPAIRABLE/REPLACEABLE PARTS			
ITEM NO.	PART NO.	NOMENCLATURE	VENDOR CODE
1	A49002-1	LIFTING EYE	
2	A49002-2	LIFTING EYE	



**767**

## **ILLUSTRATED TOOL AND EQUIPMENT MANUAL**

**PART NUMBER: A24005-1**

**NAME:** LOAD BANK - DC GENERATION SYSTEM

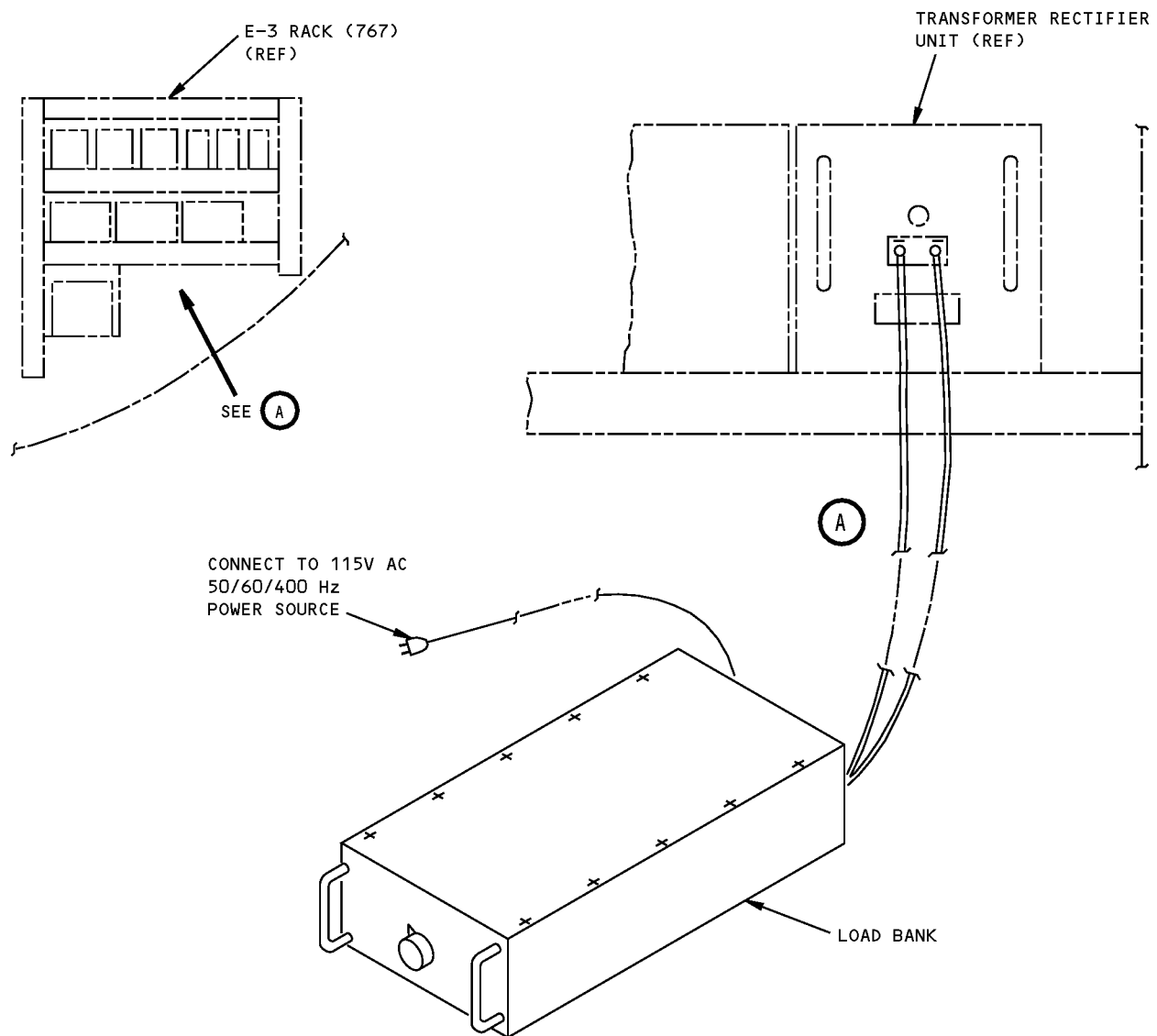
**AIRPLANE MAINTENANCE:** YES

**COMPONENT MAINTENANCE:** NO

**USAGE & DESCRIPTION:** This tool is used to load the Transformer Rectifier Unit (TRU) during test of the DC generation system. Refer to AMM 24-30-00 for further usage instructions.

**WEIGHT:** 15 lbs (7 kg)

**DIMENSIONS:** 8 x 14 x 27 inches (203 x 356 x 686 mm)



DC Generation System Load Bank  
Figure 1



767

## ILLUSTRATED TOOL AND EQUIPMENT MANUAL

**PART NUMBER: F70284-1**

**NAME:** WEAR GAGE SET - GROUND POWER PLUG AND RECEPTACLE

**AIRPLANE MAINTENANCE:** YES

**COMPONENT MAINTENANCE:** NO

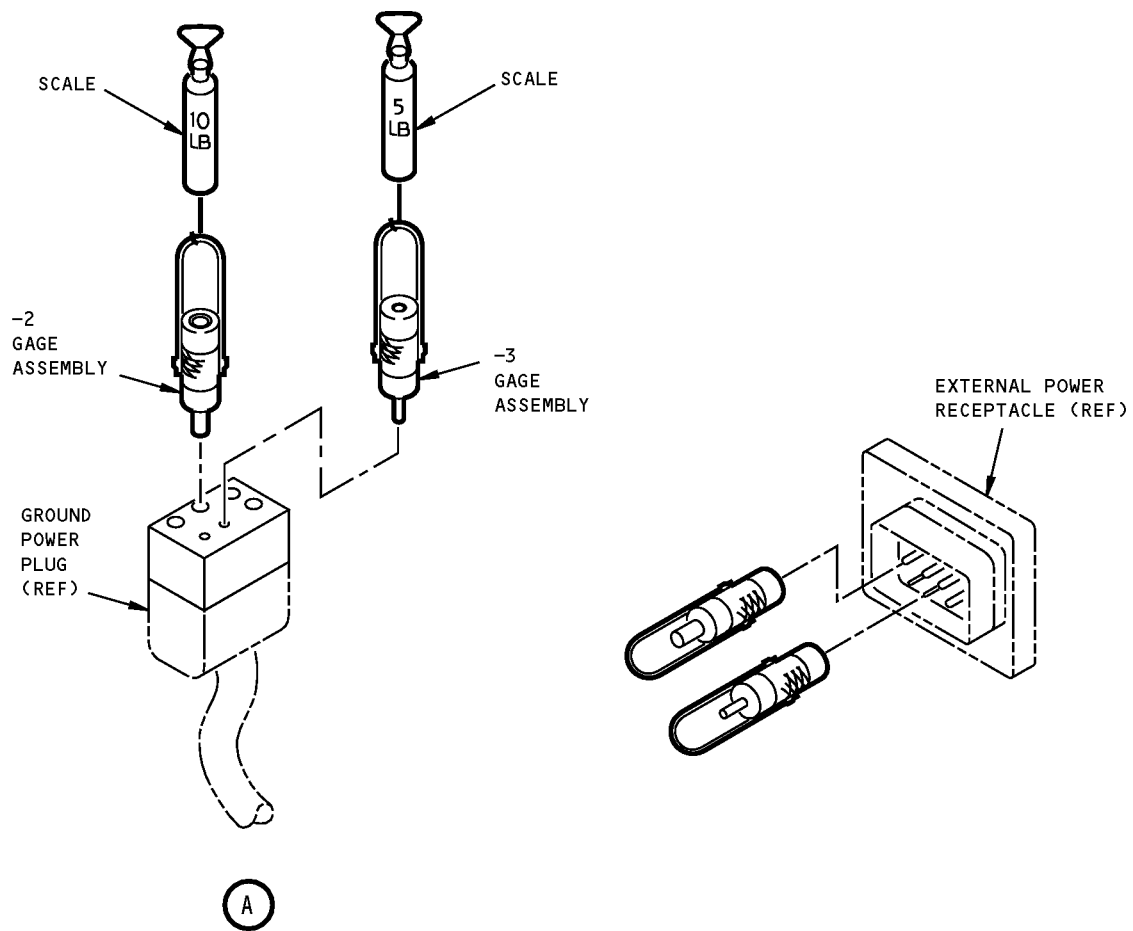
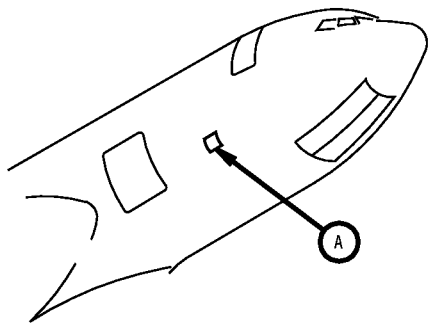
**USAGE & DESCRIPTION:** This gage set is used to check for wear on the pins and sockets of the ground power plug and receptacle. The tool measures a disengagement force of 10 lbs. for each large pin socket and 5 lbs. for each small pin socket on the ground power plug. On the ground power receptacle, the gage acts as a go/no-go gage by fitting over the receptacle pins. The receptacle pins are worn if the gage will fit over the pins. The tool set consists of two gage assemblies and a scale with 5 lb. and 10 lb. increments.

**WEIGHT:** 4 lbs (1.8 kg)

**DIMENSIONS:** 4 x 7 x 13 inches (102 x 178 x 330 mm)

**NOTE:** F70284-1 supercedes SE24-4001





**Ground Power Plug and Receptacle Wear Gage Set  
Figure 1**



**767**

## **ILLUSTRATED TOOL AND EQUIPMENT MANUAL**

**PART NUMBER: A24007-1**

**NAME:** SUPPORT - ELECTRICAL GROUND POWER CABLE

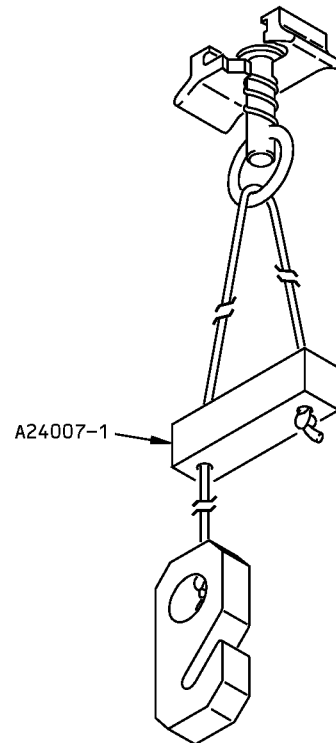
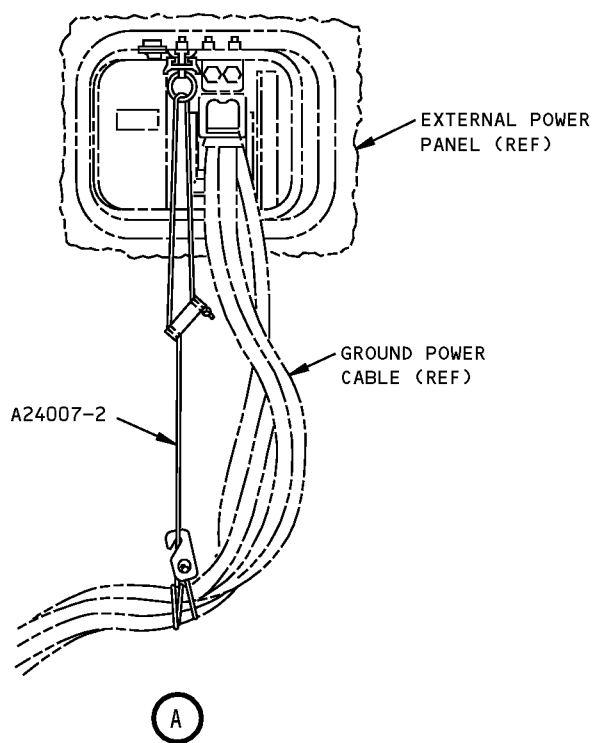
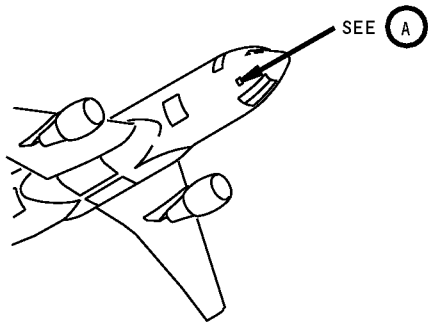
**AIRPLANE MAINTENANCE:** YES

**COMPONENT MAINTENANCE:** NO

**USAGE & DESCRIPTION:** This tool is used to relieve the strain on the external power receptacle by supporting the ground power cable. Refer to AMM 24-41-00 and AMM 24-22-00 for further usage instructions. This tool is used on all 767 airplanes. This tool consists of a support assembly and a storage box assembly.

**WEIGHT:** 1 lb (0.45 kg)

**DIMENSIONS:** 8 x 8 x 2 inches (203 x 203 x 51 mm)



**Electrical Ground Power Cable Support  
Figure 1**