



767

Illustrated Tool and Equipment Manual

The Boeing Company

This document has EAR data with Export Control Classification Numbers (ECCN) of:
9E991

Export of this technology is controlled under the United States Export Administration Regulations (EAR) (15 CFR 730-774). An export license may be required before it is used for development, production or use by foreign persons from specific countries. The controller of this data has the individual responsibility to abide by all export laws.

BOEING PROPRIETARY, CONFIDENTIAL, AND/OR TRADE SECRET

Copyright © 1982 The Boeing Company
Unpublished Work - All Rights Reserved

Boeing claims copyright in each page of this document only to the extent that the page contains copyrightable subject matter. Boeing also claims copyright in this document as a compilation and/or collective work.

This document includes proprietary information owned by The Boeing Company and/or one or more third parties. Treatment of the document and the information it contains is governed by contract with Boeing. For more information, contact The Boeing Company, P.O. Box 3707, Seattle, Washington 98124.

Boeing, the Boeing signature, the Boeing symbol, 707, 717, 727, 737, 747, 757, 767, 777, 787, Dreamliner, BBJ, DC-8, DC-9, DC-10, MD-10, MD-11, MD-80, MD-88, MD-90, P-8A, Poseidon and the Boeing livery are all trademarks owned by The Boeing Company; and no trademark license is granted in connection with this document unless provided in writing by Boeing.

DOCUMENT D634T501

ORIGINAL ISSUE DATE: DECEMBER 10, 1981
PUBLISHED BY BOEING COMMERCIAL AIRPLANES GROUP, SEATTLE, WASHINGTON, USA
A DIVISION OF THE BOEING COMPANY
PAGE DATE: Oct 10/2008



767
ILLUSTRATED TOOL AND EQUIPMENT MANUAL

Revision No. 96
Oct 10/2008

To: All holders of this Boeing Document D634T501

Attached is the current revision to the 767 Illustrated Tool and Equipment Manual.

The Illustrated Tool and Equipment Manual (ITE) is furnished either as a printed manual, on microfilm, or digital products, or any combination of the three. This revision replaces all previous microfilm cartridges or digital products. All microfilm and digital products are reissued with all obsolete data deleted and all updated pages added.

For printed manuals, changes are indicated on the List of Effective Pages (LEP). The pages which are revised will be identified on the LEP by an R (Revised), A (Added), O (Overflow, i.e. changes to the document structure and/or page layout), or D (Deleted). Each page in the LEP is identified by Chapter-Section-Subject number, page number and page date.

Pages replaced or made obsolete by this revision should be removed and destroyed.

ATTENTION

IF YOU RECEIVE PRINTED REVISIONS, PLEASE VERIFY THAT YOU HAVE RECEIVED AND FILED THE PREVIOUS REVISION. BOEING MUST BE NOTIFIED WITHIN 30 DAYS IF YOU HAVE NOT RECEIVED THE PREVIOUS REVISION. REQUESTS FOR REVISIONS OTHER THAN THE PREVIOUS REVISION WILL REQUIRE A COMPLETE MANUAL REPRINT SUBJECT TO REPRINT CHARGES SHOWN IN THE DATA AND SERVICES CATALOG.

TRANSMITTAL LETTER

D634T501

Page 1
Oct 10/2008



767

ILLUSTRATED TOOL AND EQUIPMENT MANUAL

TEMPORARY REVISIONS

Remove any Temporary Revisions that have a date earlier than the date of this revision.

Do not remove any Temporary Revisions (TRs) that have a date later than the date of this revision. TRs with a later date will be incorporated into the next revision of the manual (unless they are superseded by a subsequent TR).

A TR status report is sent with each TR. The TR status report has a list of all TRs that were sent for this manual during the last two revision cycles. At the top of the list is the date and time that the list was created.

When you have more than one TR, the TR status report with the latest date and time gives you the most current information.

TRANSMITTAL LETTER

D634T501

Page 2
Oct 10/2007



767

ILLUSTRATED TOOL AND EQUIPMENT MANUAL

Location of Change

Description of Change

FRONTMATTER

Added tool dimension clarification statement in the introduction section.

CHAPTER 05

05-50-03

Changed loop resistance test set part number in usage and description.

CHAPTER 12

12-10-01

Added new tool dash number for A12007 Adapter - Tire Inflation.

CHAPTER 21

21-30-01

Changed note and usage information to reflex tool dash number for A21010 Vacuum Tank - Pressure relief Valve Test.

CHAPTER 24

24-00-01

Added supersede note and new tool dash number for tool A71015 Lift Fixture - Engine Accessory.

24-10-09

Added Subject 24-10-09.

CHAPTER 25

25-20-05

Added weight data to J25001 Lever - Stowage Bin Release.

25-20-08

Added Subject 25-20-08.

CHAPTER 27

27-20-06

Added Subject 27-20-06.

27-80-17

Changed supersede note for tool A27092 Actuator/Deactuator Set - Proximity Sensors.

CHAPTER 28

28-10-17

Changed due to new J28007 Pressurization Equipment - Wing Dry Bay, Fuel Leak Detection tool design.

28-10-18

Added new dash number for tool J28010 Console - Shop Air Supply.

28-10-19

Added Subject 28-10-19.

CHAPTER 32

32-10-15

Added Note to A32030 Lock, Main Landing Gear Door.

32-70-01

Added aircraft model applicability to A32088 Maintenance Lock - Retractable Tail Skid drawing.

32-70-02

Added aircraft applicability to A32090 Hoist Equipment - Tail Skid Shock Strut.

CHAPTER 34

34-00-05

Added Subject 34-00-05.

34-10-03

Added tool dash number to A34016 Breakout Box - ARINC 600, Line Maintenance subject.

CHAPTER 52

52-30-16

Added weights and dimensions to F70258 Personal Safety Barrier - Main Deck Cargo Door.

HIGHLIGHTS



767

ILLUSTRATED TOOL AND EQUIPMENT MANUAL

Location of Change

Description of Change

CHAPTER 55

55-10-01

Added new tool A55001-47 reference superseding A55001-42 tool reference.

CHAPTER 57

57-30-02

Added Subject 57-30-02.

CHAPTER 78

78-30-09

Changed tool dimensions and weight data.

78-30-21

Changed A78025 usage and description to correct typo.

Changed A78025-1 and -77 to A78025-3 and -79 Breakout Box Assembly call outs.

HIGHLIGHTS

D634T501

Page 2
Oct 10/2008



767
ILLUSTRATED TOOL AND EQUIPMENT MANUAL

Subject/Page	Date	Subject/Page	Date	Subject/Page	Date
TITLE PAGE		CONTENTS (cont)			
O 1	Oct 10/2008	O 19	Oct 10/2008		
2	BLANK	O 20	Oct 10/2008		
TRANSMITTAL LETTER		O 21	Oct 10/2008		
R 1	Oct 10/2008	O 22	Oct 10/2008		
2	Oct 10/2007	O 23	Oct 10/2008		
HIGHLIGHTS		O 24	Oct 10/2008		
R 1	Oct 10/2008	O 25	Oct 10/2008		
R 2	Oct 10/2008	O 26	Oct 10/2008		
EFFECTIVE PAGES		O 27	Oct 10/2008		
1	Oct 10/2008	O 28	Oct 10/2008		
2	BLANK	LICENSE AGREEMENT			
EFFECTIVE CHAPTERS		1	Apr 10/2007		
R 1	Oct 10/2008	2	Apr 10/2007		
R 2	Oct 10/2008	3	Apr 10/2007		
REVISION RECORD		4	Apr 10/2007		
1	Apr 10/2006	5	Apr 10/2007		
2	Apr 10/2006	6	Apr 10/2007		
RECORD OF TEMPORARY REVISIONS		7	Apr 10/2007		
1	Apr 10/2006	8	BLANK		
2	Apr 10/2006	INTRODUCTION			
CONTENTS		1	Oct 10/2007		
O 1	Oct 10/2008	O 2	Oct 10/2008		
2	Apr 10/2008	O 3	Oct 10/2008		
O 3	Oct 10/2008	4	Oct 10/2006		
O 4	Oct 10/2008	5	Oct 10/2006		
O 5	Oct 10/2008	6	BLANK		
O 6	Oct 10/2008				
O 7	Oct 10/2008				
O 8	Oct 10/2008				
O 9	Oct 10/2008				
O 10	Oct 10/2008				
O 11	Oct 10/2008				
O 12	Oct 10/2008				
O 13	Oct 10/2008				
O 14	Oct 10/2008				
O 15	Oct 10/2008				
O 16	Oct 10/2008				
O 17	Oct 10/2008				
O 18	Oct 10/2008				

A = Added, R = Revised, O = Overflow, D = Deleted

EFFECTIVE PAGES

Page 1
Oct 10/2008

D634T501



767

ILLUSTRATED TOOL AND EQUIPMENT MANUAL

	Chapter	Date	Title
R	05	Oct 10/2008	TIME LIMITS/MAINTENANCE CHECKS
	06	Apr 10/2006	DIMENSIONS AND AREAS
	07	Oct 10/2007	LIFTING AND SHORING
	09	Oct 10/2007	TOWING AND TAXIING
	10	Oct 10/2007	PARKING AND MOORING
R	12	Oct 10/2008	SERVICING
	20	Oct 10/2007	STANDARD PRACTICES - AIRFRAME
R	21	Oct 10/2008	AIR CONDITIONING
	22	Oct 10/2006	AUTO FLIGHT
	23	Oct 10/2007	COMMUNICATIONS
R	24	Oct 10/2008	ELECTRICAL POWER
R	25	Oct 10/2008	EQUIPMENT/FURNISHINGS
	26	Oct 10/2007	FIRE PROTECTION
R	27	Oct 10/2008	FLIGHT CONTROLS
R	28	Oct 10/2008	FUEL
	29	Apr 10/2007	HYDRAULIC POWER
	30	Apr 10/2006	ICE AND RAIN PROTECTION
	31	Oct 10/2006	INDICATING/RECORDING SYSTEM
R	32	Oct 10/2008	LANDING GEAR
	33	Apr 10/2006	LIGHTING
R	34	Oct 10/2008	NAVIGATION
	35	Oct 10/2007	OXYGEN
	36	Apr 10/2007	PNEUMATIC POWER
	38	Oct 10/2007	WATER/WASTE
	49	Oct 10/2007	AUXILIARY POWER
	51	Oct 10/2007	STRUCTURES
R	52	Oct 10/2008	DOORS
	53	Apr 10/2007	FUSELAGE
	54	Apr 10/2007	NACELLES/PYLONS
R	55	Oct 10/2008	STABILIZER
	56	Apr 10/2006	WINDOWS
R	57	Oct 10/2008	WINGS
	71	Oct 10/2007	POWER PLANT
	73	Apr 10/2006	ENGINE FUEL AND CONTROL

EFFECTIVE CHAPTERS

Page 1
Oct 10/2008

D634T501



767

ILLUSTRATED TOOL AND EQUIPMENT MANUAL

	Chapter	Date	Title
R	76	Oct 10/2008	ENGINE CONTROLS
	77	Oct 10/2007	ENGINE INDICATING
	78	Oct 10/2008	EXHAUST
	80	Apr 10/2006	STARTING

EFFECTIVE CHAPTERS

D634T501

Page 2
Oct 10/2008



767

ILLUSTRATED TOOL AND EQUIPMENT MANUAL

All revisions to this manual will be accompanied by transmittal sheet bearing the revision number. Enter the revision number in numerical order, together with the revision date, the date filed and the initials of the person filing.

[illegible]

REVISION RECORD

767
ILLUSTRATED TOOL AND EQUIPMENT MANUAL

[illegible]

REVISION RECORD



767

ILLUSTRATED TOOL AND EQUIPMENT MANUAL

All temporary revisions to this manual will be accompanied by a cover sheet bearing the temporary revision number. Enter the temporary revision number in numerical order, together with the temporary revision date, the date the temporary revision is inserted and the initials of the person filing.

When the temporary revision is incorporated or cancelled, and the pages are removed, enter the date the pages are removed and the initials of the person who removed the temporary revision.

[illegible]

RECORD OF TEMPORARY REVISION

767
ILLUSTRATED TOOL AND EQUIPMENT MANUAL

[illegible]

RECORD OF TEMPORARY REVISION



767

ILLUSTRATED TOOL AND EQUIPMENT MANUAL

TABLE OF CONTENTS

<u>Subject</u>	<u>Title</u>	<u>Part No.</u>
05-	TIME LIMITS/MAINTENANCE CHECKS	
05-50-01	AIR FLOW CUP - LOW/HIGH BLOW TEST	G21007-1
05-50-02	LOOP RESISTANCE TEST SET	906-10246-3
05-50-03	CALIBRATION UNIT - LOOP RESISTANCE TESTER	906-10272-5
06-	DIMENSIONS AND AREAS	
06-00-01	DATA SHEET - LWR CARGO COMPARTMENT DOOR/ THRESHOLD CONFIGURATION	A00004
07-	LIFTING AND SHORING	
07-00-01	JACK ADAPTER - FORWARD BODY	A07001-1, -11
07-00-02	JACK ADAPTER - OUTBOARD WING	A07003-1
07-00-03	JACKING BAR SET - MAIN LANDING GEAR AXLE	A07004-1, -8
07-00-04	HOIST ADAPTER - AIRPLANE RECOVERY	A07005-1, -2
07-00-05	JACKING BAR EQUIPMENT - MAIN LANDING GEAR AXLE	A07008-1, -19, -25, -26, -27, -28, -29
07-00-06	JACKING BAR EQUIPMENT - MAIN LANDING GEAR AXLE	A07009-1
07-10-01	SLING - TETHERING/LIFTING AIRPLANE RECOVERY	3OHME65B00002
07-10-02	EMERGENCY JACKING EQUIPMENT - NOSE LANDING GEAR	A07002-1, -11, -12
07-10-03	SLING EQUIPMENT - TETHERING/LIFTING AIRPLANE RECOVERY	J07008-1, -22, -30
09-	TOWING AND TAXIING	
09-00-01	DATA SHEET - 767 TOWBAR	A09002
09-00-02	LOCK PIN - NOSE GEAR TOWING LEVER	A09003-1, -2
10-	PARKING AND MOORING	
10-00-01	REMOVAL/INSTALLATION POLE - PITOT-STATIC PROBE COVER	A10002-1, -9
10-10-02	MECHANICAL EQUIPMENT - PITOT STATIC PROBE (INSTALLATION TOOL FOR PITOT STATIC PROBE PROTECTIVE COVER)	ME65B40136-1
12-	SERVICING	
12-00-01	LADDER - ACCESS DOOR, E/E BAY	A12006-1
12-10-01	ADAPTER - TIRE INFLATION	A12007-11, -20, -23
12-10-02	INFLATION TOOL - STRUT	F70200-14
12-10-03	DRAIN EQUIPMENT - SHOCK STRUT, MLG/NLG	A32066-1

CONTENTS



767

ILLUSTRATED TOOL AND EQUIPMENT MANUAL

<u>Subject</u>	<u>Title</u>	<u>Part No.</u>
12-10-04	INFLATION TOOL - TIRE	F70199-13, -17, -19, -20
12-10-05	DRAIN HOSE - SUMP VALVE, CENTER AUXILIARY FUEL TANKS	A28008-1, -8
12-20-01	FUEL SAMPLING EQUIPMENT	A12001-1, -14
12-20-02	LUBRICATION ADAPTER - ATTACH FITTING, WING/NACELLE	A12005-1
12-20-03	PLATFORM - ACCESS, MLG WHEEL WELL	A12004-40
12-20-04	LUBRICATION ADAPTER - AFT WHEEL WELL BULKHEAD, SPHERICAL BEARING	A12008-1
20-	STANDARD PRACTICES - AIRFRAME	
20-00-01	BOOM HOIST - GENERAL	A20001-65, -82, -83
20-00-02	LOCK SET - CIRCUIT BREAKER	A27010-11, -15
20-00-03	WRENCHES - SPANNER	A32045-1, -12, -2, -24, -25, -3, -34, -40, -45, -46, -48, -53, -57, -58, -65, -66, -70, -75, -76, -77, -78, -79, -8, -87, -88, -90, -91
20-00-04	SET - RIG PIN	A20004-2, -68, -72, -76, -78
20-00-05	SPANNER WRENCH - AN STANDARD TYPE	F72959-41, -8
20-00-06	SPANNER WRENCH - AN STANDARD TYPE	F72959-1 thru 12, -31 thru 42
20-00-07	INSTALLATION SET - NAS1368 GROMMET	A20006-32
20-00-08	LEVERAGE ADAPTER - ACCESS PANEL	B20004-21
20-00-09	ROLLER SWAGING TOOL - BEARING	ST926E-*
20-00-10	BEARING REMOVAL TOOL	ST927C-*
20-00-11	TUBE PRESETTING TOOL - FLARELESS	ST879A
20-00-12	HOLDING FIXTURE - HAND PRESET TOOLS	ST879AF
20-00-13	SLEEV-SET TOOL - FLARELESS TUBE FITTING	ST878D
20-00-14	INSTALLATION TOOL, O-RING	ST848
20-00-15	REMOVAL TOOL - O-RING	ST848R
20-00-16	BACS13AP INSTALLATION TOOL	ST878D
20-00-17	SOCKET SET - SPHERICAL BEARING	A20008-1
20-00-18	MANDREL - ROLLER BEARING PRESSING	ST918C
20-00-19	SUPPORT - BEARING INSTALLATION	ST919
20-00-20	MOUNTING PLATE	ST919-MP
20-00-21	ROLLER STAKING TOOL	ST932
20-00-22	HOLE SAW	A32091

CONTENTS



767

ILLUSTRATED TOOL AND EQUIPMENT MANUAL

<u>Subject</u>	<u>Title</u>	<u>Part No.</u>
20-00-23	KIT - ROLLER SWAGE	F80113-105, -37, -50, -61, -64, -70, -88
20-00-24	STAKING TOOL	ST922C
20-00-25	BUSHING REMOVAL AND INSTALLATION KIT - LANDING GEAR LOCK LINK	A20011-64, -76
20-00-26	STAKING TOOL - BEARING SLEEVE, SIX POINT	ST929-2C
20-00-27	REMOVAL TOOL - BEARING	ST927
20-00-28	SWAGING TOOL - BEARING	A20012-10, -11
20-00-29	MANDREL - SHRINK FIT BUSHING INSTALLATION	F70321-1, -10, -11, -12, -13, -14, -15, -16, -17, -18, -19, -2, -20, -21, -22, -23, -24, -25, -26, -27, -28, -29, -3, -30, -31, -32, -33, -34, -35, -36, -37, -38, -39, -4, -40, -5, -6, -7, -8, -9
20-00-30	STANDARD BOX - SUPPORT EQUIPMENT	F70313-1, -2, -3, -4
20-00-31	REMOVAL TOOL - SCRIVET FASTENER	ST991A-2
20-00-32	REAMER - CARBIDE STRAIGHT FLUTE, STRAIGHT SHANK- PILOTED	ST1864P
20-00-33	WORK TABLE - PILOT'S AISLE STAND	A20013-1
20-00-34	LOAD POSITIONER - ENGINE ACCESSORIES, 250 LB CAPACITY	J20002-1, -36
20-10-01	ATTACH FITTING SET - WING AND HORIZONTAL STABILIZER, SAFETY HARNESS	A20002-4
20-10-02	CLAMP - CONTROL CABLE	A20005-9
20-10-03	TEST TOOL - STRIPPING FORCE, WRAPPED WIRE CONNECTION	A20007-1
21-	AIR CONDITIONING	
21-20-01	TEST BOX - CURRENT SENSOR FAN, ENVIRONMENTAL CONTROL SYSTEM	A21004-1
21-30-01	VACUUM TANK - PRESSURE RELIEF VALVE TEST	A21010-57, -69, -70, -72
21-30-02	HOLD OPEN SET - CABIN AIR OUTFLOW, 767	A21008-1
21-30-03	LOCK - HOLD OPEN, OUTFLOW VALVE	A21014-1
21-50-01	HOIST ADAPTERS - AIR CONDITIONING PACK	A21001-44, -45
21-50-02	REMOVAL/INSTALLATION EQUIPMENT - AVIONICS COOLING REFRIGERATION UNIT	A21002-1
21-50-03	TEST GAUGE - INSTRUMENT COOLING MONITOR SYSTEM	A21012-1
21-50-04	HOLD-OPEN ROD - RAM AIR DOOR, FLIGHT DISPATCH	A21007-1
21-50-05	BLANKING PLATE - EQUIPMENT COOLING MONITOR	A21009-1

CONTENTS



767

ILLUSTRATED TOOL AND EQUIPMENT MANUAL

<u>Subject</u>	<u>Title</u>	<u>Part No.</u>
21-50-06	CLEANING WAND EQUIPMENT - HEAT EXCHANGER	B21005-1, -10
21-50-07	TEST EQUIPMENT - LOW LIMIT VALVE	A21011-1, -6
21-50-08	HOIST ADAPTER EQUIPMENT - AIR CONDITIONING PACK	A21013-50
22-	AUTO FLIGHT	
22-00-01	REMOTE CONTROL UNIT - MAINTENANCE CONTROL DISPLAY PANEL	A22001-15, -22
22-10-01	BREAKOUT BOX - MULTIPURPOSE, 100/124 PIN	C22005-1, -7, -8
22-20-01	BREAKOUT BOX - ATS LOADBOARD YAW DAMPER MONITOR RECEIVER, PCA	A22005-1, -9
22-20-02	BREAKOUT BOX - FAULT DISPLAY PCA, YAW DAMPER	A22006-1
22-20-03	BREAKOUT BOX - ARINC/FILTER/FUSE PCA, YAW DAMPER	A22007-1
22-20-04	BREAKOUT BOX - YAW DAMPER EMI FILTER	B22002-1
22-20-05	SIMULATOR - YAW DAMPER MODULE	B29005-17
22-20-06	SIMULATOR - YAW DAMPER/STABILIZER TRIM MODULE	B29006-1
22-30-01	COMPONENT MAINTENANCE EQUIPMENT - AUTOTHROTTLE CLUTCH	A22003-22
22-30-02	CHECKING FIXTURE - AUTOTHROTTLE GEARBOX	A22004-1
22-30-03	RIGGING EQUIPMENT - AUTOTHROTTLE BRAKE	A22008-1, -17, -26
22-30-04	TEST EQUIPMENT - AUTOTHROTTLE CLUTCH	B22003-39
22-30-05	TEST EQUIPMENT - AUTOTHROTTLE CLUTCH	G22003-132, -133, -134, -135
22-30-06	TEST EQUIPMENT - AUTOTHROTTLE, GEARBOX, BRAKE	J22004-67, -68
23-	COMMUNICATIONS	
23-10-01	TEST BOX - POWER SUPPLY, AUDIO ACCESSORY UNIT	A23011-1
23-10-02	TEST BOX - RADIO COMMUNICATIONS PANEL (RCP) PROCESSOR CARD	G23001-37, -41
23-20-01	HOIST ADAPTER - SATCOM TOP - MOUNTED HIGH GAIN ANTENNA	J23001-1, -12
23-30-01	TEST BOX ASSEMBLY - TV ANTENNA COUPLER	A23002-1, -14
23-40-01	ACOUSTIC COUPLER - ATTENDANT'S HANDSET	A23001-1, -4, -8, -9
23-40-02	TEST BOX - FLIGHT ATTENDANT INTERPHONE	A23004-1
23-40-03	TEST BOX - PRINTED CIRCUIT CARDS, AUDIO ACCESSORY UNIT	A23003-29, -30, -41, -42
23-40-04	TEST BOX - AUDIO SELECTOR PANEL	A23009-20, -31
23-40-05	TEST BOX - AUDIO ACCESSORY UNIT	A23006-45, -46, -47
23-40-06	EXTENDER BOARD - AUDIO ACCESSORY UNIT ASSEMBLY	B23001-1
23-40-07	ACOUSTIC COUPLER EQUIPMENT - TRANSMITTER AND RECEIVER ASSEMBLY	C23002-1

CONTENTS



767

ILLUSTRATED TOOL AND EQUIPMENT MANUAL

<u>Subject</u>	<u>Title</u>	<u>Part No.</u>
23-70-01	PINGLITE	PL1
23-70-02	SPANNER WRENCH	810-325
24-	ELECTRICAL POWER	
24-00-01	LIFT FIXTURE - ENGINE ACCESSORY	A71015-107
24-00-02	HOIST EQUIPMENT - LRU'S MAIN EE BAY	A24001-1, -5
24-00-03	HOIST EQUIPMENT - APU BATTERY	A49006-26
24-00-04	HOIST EQUIPMENT - APU BATTERY	A24006-1
24-00-05	SUPPORT HOOK - ENGINE POWER FEED CABLE, PW4000 ENGINE	G24006-1
24-00-06	HOIST SYSTEM - RB211, CF6-50 AND JT9D ENGINE ACCESSORY	G24011-1
24-10-01	INSPECTION PLATE - QAD	900-24999
24-10-02	WRENCH, SPECIAL TORQUE	F80-0-50007
24-10-03	DISPATCH EQUIPMENT - IDG, CF6-80C2 ENGINE	G24005-24
24-10-04	IDG DISPATCH KIT - RB211-524 ENGINE	G24009-1
24-10-05	HOIST ADAPTER ASSEMBLY - INTEGRATED DRIVE GENERATOR	A24011-1
24-10-06	ACCESSORY ADAPTER - HOIST SYSTEM RB211 AND CF6-50 ENGINES	G24013-1
24-10-07	ACCESSORY ADAPTER - HOIST SYSTEM, RB211-524, CF6-50 ENGINES	2ME65B89603
24-10-08	DISPATCH KIT - INTEGRATED DRIVE GENERATOR, PRATT AND WHITNEY ENGINES	A24012-1
24-10-09	Pressure Test Equipment - Engine Generators	J24015-1
24-20-01	TEST RELAY - ISOLATION REQUEST, POWER DISTRIBUTION SYSTEM	A24004-1, -2
24-20-02	TEST BOX - HYDRAULIC MOTOR DRIVEN GENERATOR CONTROL UNIT	A24008-19, -27, -37
24-20-03	LIFTING EYE - APU GENERATOR	A49002-1, -2
24-30-01	LOAD BANK - DC GENERATION SYSTEM	A24005-1
24-40-01	WEAR GAGE SET - GROUND POWER PLUG AND RECEPTACLE	F70284-1
24-40-02	SUPPORT - ELECTRICAL GROUND POWER CABLE	A24007-1
25-	EQUIPMENT/FURNISHINGS	
25-10-01	ADJUSTOR - FRICTION BALL CATCH	A25017-1
25-20-01	INSTALLATION EQUIPMENT - LUGGAGE BIN SNUBBER	A25008-1
25-20-02	WRENCH SET - STOWAGE BIN RELEASE	A25018-10
25-20-03	GAGE-INSPECTION, SEAT TRACK, FLIGHT CREW	A25020-1, -4, -8
25-20-04	WRENCH, SPANNER TYPE	ST2580-163A

CONTENTS



767

ILLUSTRATED TOOL AND EQUIPMENT MANUAL

<u>Subject</u>	<u>Title</u>	<u>Part No.</u>
25-20-05	LEVER- STOWAGE BIN RELEASE	J25001-5
25-20-06	STANDARD TOOL - SPANNER NOSE PLIERS	ST2580-334C
25-20-07	WRENCH - ANTI-RATTLE NUT	C25001-1
25-20-08	ANTI-RATTLE NUT WRENCH KIT	C25012-1
25-30-01	REPLACEMENT EQUIPMENT - AIR CHILLER, FWD GALLEY	A25001-33
25-30-02	SLIDE BAR - AFT GALLEY AIR CHILLER	A25002-1
25-50-01	REMOVAL TOOL - BALL TRANSFER UNIT	A25009-2
25-50-02	PUSH PLATE - SPRING LOADED PDU	A25021-1
25-50-03	TEST EQUIPMENT - PDU, GUIDES, AND ROLLOUT STOPS	A25022-1
25-50-04	TEST EQUIPMENT - LATERAL GUIDE ASSEMBLY	J25003-35
25-60-01	SIMULATOR - DOOR OPENING ACTUATOR, OFF-WING ESCAPE SLIDE	A25003-24
25-60-02	SIMULATOR EQUIPMENT - OFF-WING ESCAPE SLIDE DOOR LATCH OPENING ACTUATOR	A25004-1
25-60-03	SIMULATOR - GAS PRESSURE VESSEL	A25005-29
25-60-04	WRENCH - INTEGRATOR, OFF-WING ESCAPE SYSTEM	A25011-2
25-60-05	ELECTRICAL TEST EQUIPMENT - OFF-WING ESCAPE SLIDE SYSTEM	A25012-19, -29
25-60-06	SIMULATOR EQUIPMENT - LATCH OPENING, OFF-WING ESCAPE SYSTEM	A25014-29
25-60-07	SAFETY EQUIPMENT - ESCAPE SYSTEM, OFF-WING	A25016-1
25-60-08	GAGE - ACTUATOR, LATCH OPENING, OFF-WING ESCAPE SYSTEM	A25019-1
26-	FIRE PROTECTION	
26-10-01	EXTENDER CARD - ELECTRONIC CARD FILE	G26004-39, -40
26-10-02	ADAPTER - HOT WIRE ANEMOMETER	G26005-13, -17, -24, -9
26-10-03	TEST BOX-CARGO SMOKE HEATER, TEST PLUG	J26007-1
26-20-01	ELECTRICAL TEST EQUIPMENT - BOTTLE SQUIB, FIRE EXTINGUISHER SYSTEM	A26001-165, -174, -187
26-20-02	TEST BOX - TIME DELAY, CARGO FIRE EXTINGUISHER BOTTLE	A26002-36, -54
26-20-03	TEST EQUIPMENT - REGULATOR, CARGO FIRE EXTINGUISHING	A26003-10, -7
26-20-04	PLUG EQUIPMENT - DISCHARGE NOZZLE, CARGO COMPARTMENT FIRE EXTINGUISHER	A26004-1
26-20-05	PLATFORM - MAINTENANCE, CARGO SIDEWALL	A26005-1
26-20-06	TEST EQUIPMENT - FIRE EXTINGUISHER TUBING, CARGO COMPARTMENT	J26005-24, -32

CONTENTS



767

ILLUSTRATED TOOL AND EQUIPMENT MANUAL

<u>Subject</u>	<u>Title</u>	<u>Part No.</u>
26-20-07	TEST EQUIPMENT - FIRE EXTINGUISHING TUBING, CARGO COMPARTMENT	J26009-1
27-	FLIGHT CONTROLS	
27-00-01	HOIST BRACKET - FISHPOLE HOIST FLAP PDU	A27026-7
27-00-02	BREAKOUT BOX - BENCH TEST	A27039-1, -19, -26, -27
27-00-03	BREAKOUT BOX - PRINTED CIRCUIT CARD	A27038-1, -10, -20, -6
27-00-04	TEST BOX - POWER SUPPLY, CSEU	A27030-66
27-00-05	TEST BOX - NOISE, CSEU POWER SUPPLY	A27045-16
27-00-06	TEST BOX - REGULATOR, CSEU POWER SUPPLY	A27052-1
27-00-07	TEST BOX - MONITOR, CSEU POWER SUPPLY	A27053-26, -29, -32
27-00-08	BREAKOUT BOX - CHOPPER/REGULATOR POWER SUPPLY, CSEU	A27059-1
27-00-09	BREAKOUT BOX EQUIPMENT - POSITION SENSORS, FLIGHT CONTROLS RIGGING	A27063-71, -91
27-00-10	BREAKOUT BOX - FSEU/CSEU POWER SUPPLY	B27018-19
27-00-11	TEST BOX - CONVERTER, CSEU POWER SUPPLY	A27044-53
27-00-12	READOUT AND CONTROL EQUIPMENT - FUNCTIONAL TEST STANDS	A27081-1, -2
27-00-13	TEST BOX - ANALOG PRINTED CIRCUIT, RUDDER RATIO	A27085-1
27-00-14	TEST BOX - STICK NUDGER	A27100-1
27-00-15	WRENCH - SPANNER, SAFETY LANYARD, TIEDOWN LOCKS	2ME65B00002
27-00-16	TEST BOX - POWER SUPPLY, CONTROL SYSTEM ELECTRONICS UNIT/CSEU	B27079-19
27-00-17	MEASUREMENT TOOL - RUDDER AND ELEVATOR POWER CONTROL ACTUATOR	A27125-1
27-10-01	LOCK - OUTBOARD AILERON	A27005-1
27-10-02	DEACTIVATION EQUIPMENT - INBOARD AILERON	A27013-1
27-10-03	PROTRACTOR ASSEMBLY - CONTROL COLUMN	4MIT65B80307-1
27-10-04	REMOVAL/INSTALLATION SLING EQUIPMENT - INBOARD/ OUTBOARD AILERON	A27015-1
27-10-05	STRAIGHTEDGE - CONTROL WHEEL	A27020-1
27-10-06	ADAPTER EQUIPMENT - CONTROL WHEEL	A27021-29, -96, -98
27-10-07	RIGGING BAR - AILERON	A27024-29, -31, -47, -55
27-10-08	REMOVAL/INSTALLATION FIXTURE - LOAD LIMITER AILERON CONTROL SPRING	A27029-28
27-10-09	CHECK FIXTURE - AILERON CONTROL LOAD LIMITER SPRING	A27028-11

CONTENTS



767

ILLUSTRATED TOOL AND EQUIPMENT MANUAL

<u>Subject</u>	<u>Title</u>	<u>Part No.</u>
27-10-10	TEST EQUIPMENT - OUTBOARD AILERON LOCKOUT MECHANISM	A27037-1
27-10-11	LINK - DUMMY TRIM ACTUATOR, AILERON	A27088-13, -6
27-10-12	BUSHING PULLER - OUTBOARD AILERON ACTUATOR	A27106-1
27-10-13	MOUNT EQUIPMENT - INBOARD AILERON RIGGING BAR	A27110-1, -20
27-10-14	ADAPTER CABLE - OUTBOARD AILERON LOCKOUT	G27033-2
27-10-15	TEST EQUIPMENT - OUTBOARD AILERON LOCKOUT ACTUATOR	A27115-34, -41
27-20-01	LOCK SET - ACTUATOR, RUDDER	A27003-23
27-20-02	ADAPTER - RUDDER PEDAL FORCE CHECK	F80212-30
27-20-03	SLING EQUIPMENT - RUDDER INSTALLATION/REMOVAL	A27022-75, -81
27-20-04	PROTRACTOR BRACKET EQUIPMENT - FEEL CENTERING AND TRIM INSTALLATION, RUDDER CONTROL	A27057-1, -13, -9
27-20-05	RIGGING BAR - RATIO CHANGER INSTALLATION, RUDDER CONTROL	A27109-1
27-20-06	FORCE EQUIPMENT - RUDDER FREEPLAY CHECK	A27124-1
27-30-01	LOCK EQUIPMENT - ELEVATOR ACTUATOR	A27111-11
27-30-02	TEST BOX - BITE DISPLAY PCA, WARNING ELECTRONIC UNIT (WEU)	A27098-1
27-30-03	SLING EQUIPMENT - INBOARD/OUTBOARD ELEVATOR SEGMENT	A27012-30
27-30-04	PCA GAGES - INBD/OUTBD AILERON, RUDDER, ELEVATOR	A27001-1, -2, -3, -4
27-30-05	RIGGING EQUIPMENT - FORCE TRANSDUCER, ELEVATOR CONTROL	A27025-1
27-30-06	WRENCH - RETAINER NUT, BUSHING, ELEVATOR HINGE	A55002-1
27-30-07	ADAPTER - RUDDER/ELEVATOR FEEL ACTUATOR CYLINDER	A27035-1
27-30-08	TEST FIXTURE - FEEL ACTUATOR CYLINDER ASSEMBLY	F80085-1, -12
27-30-09	TEST EQUIPMENT - ELEVATOR FEEL AND CENTERING UNIT	A27041-177
27-30-10	JIG EQUIPMENT - ELEVATOR FEEL AND CENTERING UNIT	A27058-60
27-30-11	ALIGNMENT PIN - FEEL ACTUATOR PISTON	B27070-1
27-30-12	SUPPORT FIXTURE - ELEVATOR SLAVE LINKAGE	A27086-10
27-30-13	INSPECTION EQUIPMENT - ELEVATOR FREEPLAY	J27079-31
27-40-01	HOIST EQUIPMENT - HORIZONTAL STABILIZER TRIM ACTUATOR	A27006-41
27-40-02	TOOL SET - STABILIZER TRIM DRIVE	A27062-1
27-40-03	TEST FIXTURE - STABILIZER TRIM DRIVE MECHANISM	A27072-55
27-40-04	SLING ASSEMBLY - STABILIZER TRIM DRIVE MECHANISM	A27085-1
27-40-05	SCALE - CONTROL COLUMN ANGLE	A27095-10
27-40-06	MEASUREMENT EQUIPMENT BEVEL GEAR TEETH, STABILIZER TRIM ACTUATOR	A27123-1

CONTENTS



767

ILLUSTRATED TOOL AND EQUIPMENT MANUAL

<u>Subject</u>	<u>Title</u>	<u>Part No.</u>
27-50-01	LOCK - TRAILING EDGE FLAPS	A27009-7
27-50-02	SLING EQUIPMENT - INBOARD TRAILING EDGE FLAP	A27016-27
27-50-03	SLING EQUIPMENT - OUTBOARD TRAILING EDGE FLAP	A27027-53, -54
27-50-04	TEST BOX - FLAP/SLAT ELECTRONIC UNIT (FSEU) POWER SUPPLY/YAW DAMPER ELECTROMAGNETIC INTERFACE (EMI) FILTER	A27036-22
27-50-05	CHECK EQUIPMENT - BEARING WIDTH	A27040-18
27-50-06	FIXTURE - TRAILING EDGE FLAP DRIVE WORM GEAR SHIM THICKNESS	A27055-1
27-50-07	RESTRAINT - AFT FLAP TO INBD TRAILING EDGE FLAP	A27019-8
27-50-08	ADAPTER - FLAP DRIVE	F70300-1
27-50-09	TOOL SET - TRAILING EDGE ROTARY ACTUATOR	A27061-44, -46, -54
27-50-10	TEST FIXTURE - POWER DRIVE COMPONENTS FLIGHT CONTROL	A27046-140, -141, -160, -163, -176, -177, -191, -192, -3, -4, -8, -99
27-50-11	LOCK SET - INBOARD AND OUTBOARD FLAP LINKAGE, TE	A27074-128, -146
27-50-12	TEST EQUIPMENT - POWER DRIVE UNIT, TE FLAP AND LE SLAT DRIVE	A27079-78, -89, -96
27-50-13	TEST EQUIPMENT - ROTARY ACTUATOR TRAILING EDGE FLAP	A27071-123, -48, -84
27-50-14	TEST EQUIPMENT - TE FLAPS ASYMMETRY FAULT ISOLATION	A27093-1, -27
27-50-15	SHAFT CLAMP - TE FLAP DRIVE	A27099-1
27-50-16	AUXILIARY DETENT - FLAP ADJUSTMENT ASSEMBLY	A27105-9
27-50-17	DUMMY LINK SET - FLAP LOAD RELIEF ACTUATOR	A27107-1
27-50-18	TEST EQUIPMENT - LEAKAGE TEST	J27054-1
27-50-19	LOCK EQUIPMENT - INBOARD AND OUTBOARD TE, FLAP LINKAGE	A27118-90
27-50-20	ASSEMBLY/DISASSEMBLY EQUIPMENT - ROTARY ACTUATOR TRAILING EDGE FLAP	A27120-43
27-50-21	WRENCH EQUIPMENT - BEARING RETAINING NUT, INBOARD FLAP LINKAGE	A27122-1
27-60-01	LOCK SET - SPOILER ACTUATOR	A27108-13
27-60-02	FUNCTIONAL TEST EQUIPMENT - SPOILER ACTUATOR	A27042-1
27-60-03	TEST EQPMT FIXTURE - INBD/OUTBD SPOILER ACTUATOR	A27043-1
27-60-04	TEST BLOCK - SPOILER ACTUATOR VALVE CARTRIDGE	A27047-1
27-60-05	WRENCH - SPOILER ACTUATOR ASSEMBLY ADJUSTMENT	A27075-1
27-60-06	WRENCH - CONTROL LEVER, SPEED BRAKE	A27087-1
27-60-07	BREAKOUT BOX - SPOILER PANEL POSITION MONITOR AND RELAY CIRCUIT PCA'S	A27096-1
27-80-01	HOIST ADAPTER - LEADING EDGE SLAT DRIVE	A27004-1, -2

CONTENTS



767

ILLUSTRATED TOOL AND EQUIPMENT MANUAL

<u>Subject</u>	<u>Title</u>	<u>Part No.</u>
27-80-02	GROUND LOCK - LEADING EDGE SLATS	A27007-1
27-80-03	SLING EQUIPMENT - LEADING EDGE SLAT	A27017-41
27-80-04	SPACER KIT - INBOARD/OUTBOARD SLAT INSTALLATION	A27023-22
27-80-05	CHECK FIXTURE - LEADING EDGE SLAT ANGLE GEARBOX BACKLASH	A27049-1
27-80-06	WRENCH - ADJUSTMENT, INBOARD LEADING EDGE SLATS	A27101-5
27-80-07	FIXTURE - CHECK, GEARBOX BACKLASH	A27048-1, -2, -3, -40
27-80-08	TOOL SET - TE FLAP DRIVE AND LE SLAT DRIVE GEARBOXES	A27051-1, -31
27-80-09	HOLDING FIXTURE EQUIPMENT - GEAR ASSEMBLY, LE SLAT DRIVE	A27119-1
27-80-10	SOCKET - THIN WALL, GEARBOX, INBOARD LEADING EDGE SLAT DRIVE	A27073-1
27-80-11	JIG EQUIPMENT - INBOARD AND OUTBOARD LEADING EDGE SLAT DRIVE AND TRAILING EDGE FLAP DRIVE POWER CONTROL UNIT	A27060-11
27-80-12	BEARING INSTALLATION EQUIPMENT - ROTARY BEARING INSTALLATION EQUIPMENT - ROTARY LEADING EDGE SLAT DRIVE	A27070-48, -61, -65, -80
27-80-13	RIGGING EQUIPMENT - LEADING EDGE SLAT POSITION SENSOR SWITCH	A27112-1
27-80-14	ADAPTER - LEADING EDGE SLAT DRIVE	A27077-1
27-80-15	SPLINE ADAPTERS - LEADING EDGE SLAT DRIVE ROTARY ACTUATORS AND GEARBOXES	A27078-7
27-80-16	GAGE - RIGGING, LEADING EDGE SLAT OUTBOARD WING	A27089-9
27-80-17	ACTUATOR/DEACTUATOR SET - PROXIMITY SENSORS	A27092-106, -84
27-80-18	SPACER SET - PRELOAD, LEADING EDGE SLAT RIGGING	A27094-1, -5
27-80-19	ADAPTER - LEADING EDGE SLAT AND TRAILING EDGE FLAP, MANUAL DRIVE	A27102-7
27-80-20	TEST EQUIPMENT - LE SLAT 5 AND 8, INBOARD OFFSET GEARBOX	A27117-1
27-80-21	SLING - OUTBOARD SLAT PDU	A27116-1
27-80-22	FIXTURE-HOLDING, GEAR ASSEMBLY, LE SLAT DRIVE	A27054-14
27-80-23	TOOL SET - SEAL INSTALLATION	A27121-1
28-	FUEL	
28-00-01	ALIGNMENT FIXTURE - ADAPTER SHAFT	MIT65B92408-1
28-00-02	GO-NO-GO GAGE FOR ASSEMBLY OF WIGGINS BACC42R COUPLING	ST8709H
28-10-01	REPAIR TOOL - FUEL SYSTEM SELF-SEALING RIVETS	F70230-1
28-10-02	HOSE SET - MAIN AND OVERRIDE PUMP DEFUELING	A28001-1

CONTENTS

Page 10
Oct 10/2008

D634T501



767

ILLUSTRATED TOOL AND EQUIPMENT MANUAL

<u>Subject</u>	<u>Title</u>	<u>Part No.</u>
28-10-03	DRAIN HOSE - FUEL SYSTEM SUMP	A28002-6
28-10-04	CHECK FIXTURE - SURGE TANK PRESSURE RELIEF VALVE	A28004-1
28-10-05	VENTILATION EQUIPMENT - FUEL TANK	A28003-1, -43
28-10-06	WRENCH - SPANNER	ST2580-302
28-10-07	ADAPTER ASSEMBLY - FUEL LEAK TRACING HOLLOW BOLT	F70206-1
28-10-08	LEAKAGE TRACING DEVICE - INTEGRAL TANK LEAKAGE TEST	F71329
28-10-10	TEST EQUIPMENT - WATER MANOMETER	F72951-1
28-10-11	CHECK FIXTURE EQUIPMENT - PRESSURE RELIEF VALVE	G28005-14, -18, -23, -29, -35, -42
28-10-12	SPANNER WRENCH - FUEL SUMP DRAIN VALVE	A28010-1, -2
28-10-13	SEALING TOOL - RIVET, FUEL TANK	J28006-1
28-10-14	SPANNER WRENCH - FUEL SUMP DRAIN VALVE	A28012-1
28-10-15	ADAPTER - SUMP DRAIN VALVE REMOVAL/INSTALLATION	B28001-18
28-10-16	ADAPTER EQUIPMENT - AIR SUPPLY, SURGE TANK	A28013-10, -11
28-10-17	PRESSURIZATION EQUIPMENT - WING DRY BAY, FUEL LEAK DETECTION	J28007-1, -10, -9
28-10-18	CONSOLE - SHOP AIR SUPPLY	J28010-26
28-10-19	FITTING EQUIPMENT - FUEL DRAIN SUMP	J28013-1
28-20-01	ALIGNMENT EQUIPMENT - FUEL SHUTOFF VALVE	B28009-1
28-20-02	TEST BOX - FUEL LEVEL SENSORS SURGE TANK	A28006-1, -22, -27
28-20-03	TEST EQUIPMENT - PRESSURE/LEAKAGE, FUEL LINES AND FITTINGS	A28011-48, -49, -50
28-20-04	TEST EQUIPMENT - ENGINE FUEL FEED MANIFOLD	G28018-26, -28, -29, -3, -4, -5, -6
28-20-05	TEST EQUIPMENT - LEAK AND PRESSURE, APU FUEL LINE SHROUD	A28005-24, -35, -42, -50
28-40-01	TEST BOX - FUEL QUANTITY INDICATING SYSTEM	A28007-39, -40
28-40-02	SOCKET - COLLIMATOR SLEEVE INSTALLATION/REMOVAL	B28004-1
28-40-03	EXTENDER BOARD - SURGE TANK FUEL LEVEL SENSOR	A28009-13, -8
28-40-04	PRESSURE PLUG EQUIPMENT - FUEL SYSTEM	B28005-2
29-	HYDRAULIC POWER	
29-00-01	HOIST ADAPTER - AIR-DRIVEN HYDRAULIC PUMP	A29001-1
29-00-02	LOCKING PIN - VALVE, HYDRAULIC RESERVOIR PRESSURIZATION SHUTOFF	A29002-6
29-00-03	SCREEN EQUIPMENT - RAM AIR TURBINE	B29001-23, -46
29-10-01	TOOL SET - HYDRAULIC FILTER OVERHAUL	A29003-49
29-10-02	TOOL SET - HYDRAULIC FILTER MODULE OVERHAUL	A29004-1
29-10-03	PLUG SET - PRESSURE TEST, HYDRAULIC RESERVOIR ASSEMBLY	J29005-30

CONTENTS

Page 11
Oct 10/2008

D634T501



767

ILLUSTRATED TOOL AND EQUIPMENT MANUAL

<u>Subject</u>	<u>Title</u>	<u>Part No.</u>
29-20-01	WRENCH - RAT HUB BEARING INSTALLATION/REMOVAL	WAS-33662
29-20-02	COVER - RAT TURBINE BLADE	732021
29-20-03	PROTECTIVE COVER - RAT HUB	734734
29-20-04	ASSEMBLY BULLET	BLS-34529
29-20-05	ASSEMBLY BULLET	BLS-34533
29-20-06	SIZING DIE	DAS-34530
29-20-07	SIZING DIE	DAS-34534
29-30-01	SEALING CAP - PRESSURE TRANSMITTER MOUNT	A29005-1
29-30-02	TEST BOX - PRESSURE/THERMAL SWITCH	A29006-19
30-	ICE AND RAIN PROTECTION	
30-10-01	PLUG EQUIPMENT - THERMAL ANTI-ICING DUCT, WING PRESSURE SWITCH TEST	A30002-1
30-40-01	TEST EQUIPMENT - WINDSHIELD RAIN REPELLENT SYSTEM	B30001-7
30-40-02	CLEANING TANK ASSEMBLY - WINDSHIELD RAIN REPELLENT SYSTEM	B30002-1
30-40-03	BREAKOUT BOX - VIEWPORT HEATER	A30003-1
31-	INDICATING/RECORDING SYSTEM	
31-00-01	TEST CABLE - WEU POWER SUPPLY	A31008-1
31-00-02	BREAKOUT BOX - POWER SUPPLY UNIT, WEU	A31010-1
31-30-01	ADAPTER CABLE - DIGITAL FLIGHT RECORDER SYSTEM TESTER	A31007-1, -30, -49, -59
31-50-01	TEST BOX - WEU POWER SUPPLY NOISE	A31005-1, -14
31-50-02	TEST BOX - WARNING ELECTRONICS UNIT (WEU) POWER SUPPLY	A31003-33, -34
31-50-03	SHORTING MODULE - MASTER WARNING PRINTED CIRCUIT ASSEMBLY	A31006-7
31-50-04	BREAKOUT BOX - WARNING ELECTRONICS UNIT POWER SUPPLY AND MONITOR	A31004-1
32-	LANDING GEAR	
32-00-01	KIT - CROWFOOT WRENCHES	F70312-25, -27, -28, -29, -30, -31, -32, -34, -35, -39, -40, -41, -45, -46, -47, -48, -49, -50, -52
32-00-02	BREAKOUT BOX - RELAY SYSTEM, AIR/GROUND	A32074-1
32-10-01	SPRING EXTENDER - DRAG STRUT, MAIN LANDING GEAR (MLG)	A32002-14
32-10-02	SLING - MAIN LANDING GEAR (MLG)	A32033-17

CONTENTS

Page 12
Oct 10/2008

D634T501



767

ILLUSTRATED TOOL AND EQUIPMENT MANUAL

<u>Subject</u>	<u>Title</u>	<u>Part No.</u>
32-10-03	SPRING COMPRESSOR - SIDE STRUT, MAIN LANDING GEAR (MLG)	A32003-1
32-10-04	PIN - ALIGNMENT, TRUCK AXLE BEAM, MAIN LANDING GEAR (MLG)	A32054-1
32-10-05	REPLACEMENT EQUIPMENT - SEAL, LOWER BEARING, MAIN LANDING GEAR (MLG)	A32005-54
32-10-06	SLING EQUIPMENT - RETRACT ACTUATOR, MAIN LANDING GEAR (MLG)	A32006-75, -77
32-10-07	PROTECTOR EQUIPMENT - AXLE AND AXLE THREAD, MAIN LANDING GEAR (MLG)	A32007-17
32-10-08	PIN PULLER - RETRACT ACTUATOR, MAIN LANDING GEAR (MLG)	A32010-1
32-10-09	WRENCH - WHEEL RETAINING NUT, MAIN LANDING GEAR (MLG)	A32012-12, -13, -6, -9
32-10-10	INSTALLATION/REMOVAL TOOL - DOWNLOCK, MAIN LANDING GEAR (MLG) AND NOSE LANDING GEAR (NLG)	A32015-9
32-10-11	SLING EQUIPMENT - MAIN LANDING GEAR (MLG) COMPONENTS	A32008-51, -53
32-10-12	SLING EQUIPMENT - DRAG AND SIDE STRUT REMOVAL/ INSTALLATION, MAIN LANDING GEAR (MLG)	A32105-1
32-10-13	TEST FIXTURE - SIDE AND DRAG BRACE LOCK ACTUATOR, MAIN LANDING GEAR (MLG)	A32063-7
32-10-14	RETENTION STRAP - INNER CYLINDER - MAIN LANDING GEAR (MLG) AND NOSE LANDING GEAR (NLG)	A32028-6
32-10-15	LOCK - MAIN LANDING (MLG) GEAR DOOR	A32030-10, -12, -18, -21, -4, -6
32-10-16	TURNBUCKLE - TRUCK POSITION ACTUATOR, MAIN LANDING GEAR (MLG)	A32031-4, -5
32-10-17	PULLER EQUIPMENT - FUSE BOLTS, FORWARD TRUNNION SUPPORT, MAIN LANDING GEAR (MLG)	A32017-1
32-10-18	REMOVAL/INSTALLATION EQUIPMENT - TRUNNION PIN, MAIN LANDING GEAR (MLG)	A32026-60
32-10-19	REMOVAL/INSTALLATION EQUIPMENT - MAIN LANDING GEAR (MLG)	A32032-39, -52, -64, -65
32-10-20	REMOVAL TOOL - MAIN LANDING GEAR (MLG) BOGIE PIVOT PIN	A32039-1
32-10-21	TEST FIXTURE - ACTUATOR, MAIN LANDING GEAR (MLG) DOOR LATCH	A32043-1
32-10-22	FISHPOLE HOIST ATTACH BRACKET - MAIN LANDING GEAR (MLG) DOOR	A32046-17
32-10-23	COMPONENT MAINTENANCE EQUIPMENT - SHOCK STRUT, MAIN LANDING GEAR (MLG)	A32051-1

CONTENTS

Page 13
Oct 10/2008

D634T501



767

ILLUSTRATED TOOL AND EQUIPMENT MANUAL

<u>Subject</u>	<u>Title</u>	<u>Part No.</u>
32-10-24	STAND EQUIPMENT - MAIN LANDING GEAR (MLG) BUILDUP	A32056-1
32-10-25	FIXTURE - TEST, MAIN LANDING GEAR (MLG) DOOR ARMING LOCKOUT ACTUATOR	A32064-1
32-10-26	LOCATING JIG - SEQUENCE VALVE, MAIN LANDING GEAR (MLG) OPERATED	A32055-1
32-10-27	RIGGING BAR - MAIN GEAR SIDE STRUT	A32073-1
32-10-28	ASSEMBLY FIXTURE - MAIN LANDING GEAR (MLG)	B32050-1, -50
32-10-29	PULLER EQUIPMENT - BUSHING, MAIN LANDING GEAR (MLG) BOGIE BEAM	A32067-1, -11, -13
32-10-30	GAUGE - MAIN LANDING GEAR (MLG) DOOR, OPEN POSITION	A32077-1
32-10-31	PULLER EQUIPMENT - BRAKE SLEEVE, MAIN LANDING GEAR (MLG) AXLE	A32079-1
32-10-32	PLUG - BUSHING INSTALLATION, MAIN LANDING GEAR (MLG) BOGIE	A32081-1
32-10-33	GUIDE - PIVOT PIN, MAIN LANDING GEAR (MLG)	A32082-1
32-10-34	AXLE PULLER - MAIN LANDING GEAR (MLG)	A32083-12
32-10-35	JIG - DOWNLOCK STOP SHIM ADJUSTMENT	A32086-1
32-10-36	JIG EQUIPMENT - REAMING, TRUNNION SUPPORT, MAIN LANDING GEAR (MLG)	A57001-1
32-10-37	SWAGING FIXTURE - PISTON ROD, MAIN LANDING GEAR (MLG)	A32089-1
32-10-38	GAGE EQUIPMENT - RIGGING, BRAKE QUADRANT, MAIN LANDING GEAR (MLG)	A32092-1
32-10-39	WRENCH - BEARING RETAINING BOLT, MAIN LANDING GEAR (MLG)	A32095-1
32-10-40	PROTECTOR EQUIPMENT - AXLE, MAIN LANDING GEAR (MLG)	A32098-1, -12
32-10-41	SPRING EXTENDER EQUIPMENT	A32099-38, -77, -78
32-10-42	DRAIN EQUIPMENT - OLEO STRUT, MAIN LANDING GEAR (MLG)/NOSE LANDING GEAR (NLG)	J32060-1
32-10-43	ADAPTER ASSEMBLY WRENCH - LANDING GEAR WHEEL RETAINING NUT	MIT65B01202-1
32-10-44	ALIGNMENT PIN - MAIN LANDING GEAR (MLG) TOW FITTING	J32065-1
32-10-45	SHOCK STRUT EQUIPMENT - COMPONENT MAINTENANCE, MAIN LANDING GEAR (MLG)	A32106-1
32-10-46	PULLER EQUIPMENT - WHEEL AND BRAKE SLEEVES, MAIN LANDING GEAR (MLG) AXLES	J32010-58, -62
32-10-47	RIGGING TUBE EQUIPMENT - SIDE STRUT, MAIN LANDING GEAR (MLG)	A32111-1
32-10-48	REMOVAL EQUIPMENT - MAIN LANDING GEAR (MLG) BOGIE PIVOT PIN	A32116-1
32-10-49	SLING EQUIPMENT - RETRACT ACTUATOR, MAIN LANDING GEAR (MLG)	A32108-1, -2

CONTENTS

Page 14
Oct 10/2008

D634T501



767

ILLUSTRATED TOOL AND EQUIPMENT MANUAL

<u>Subject</u>	<u>Title</u>	<u>Part No.</u>
32-10-50	PULLER EQUIPMENT - FUSE PIN, FORWARD TRUNNION, MAIN LANDING GEAR (MLG)	A32104-1
32-10-51	OVERHEAD INSTALLATION/REMOVAL EQUIPMENT - MAIN LANDING GEAR (MLG)	A32115-1, -2, -6
32-10-52	REPLACEMENT EQUIPMENT - LOWER BEARING SEALS, MAIN LANDING GEAR (MLG)	A32107-1
32-10-53	PIN INSTALLATION/REMOVAL KIT - MAIN LANDING GEAR (MLG)	A32109-41
32-10-54	REMOVAL/INSTALLATION GUIDE EQUIPMENT - AFT TRUNNION, MAIN LANDING GEAR (MLG)	A32112-1
32-10-55	TORQUE ADAPTER SET - ACTUATOR COMPONENTS, MAIN LANDING GEAR (MLG)	A32120-1
32-10-56	PIN PULLER EQUIPMENT - BRAKE ROD, MAIN LANDING GEAR	A32110-1
32-10-57	HOIST EQUIPMENT - AIRPLANE RECOVERY, WITHOUT MAIN LANDING GEAR (MLG)	A07011-1, -2
32-10-58	TRUCK POSITION RETAINER AND OLEO LOCK EQUIPMENT - MAIN LANDING GEAR (MLG)	A32114-64
32-10-59	FISHPOLE HOIST ATTACH BRACKET EQUIPMENT - MAIN LANDING GEAR (MLG) DOOR	A32118-1
32-10-60	FIXTURE EQUIPMENT - LANDING GEAR ACTUATOR ASSEMBLIES	A32121-1
32-20-01	PULLER - TRUNNION PINS, NOSE LANDING GEAR	A32011-1
32-20-02	PIN PULLER - UPPER DRAG BRACE, NOSE LANDING GEAR	A32013-1
32-20-03	DOWNLOCK - MAIN LANDING GEAR (MLG) AND NOSE LANDING GEAR (NLG)	A32014-1, -2
32-20-04	WRENCH ADAPTER - GLAND NUT, NOSE LANDING GEAR	A32021-1
32-20-05	PROTECTOR - AXLE, NOSE LANDING GEAR (NLG)	A32022-1
32-20-06	SPRING EXTENDER - LOCK LINK, NOSE LANDING GEAR	A32018-1
32-20-08	HOIST ADAPTER - DRAG STRUT, NOSE LANDING GEAR	A32020-1
32-20-09	SLING - RETRACT ACTUATOR, NOSE LANDING GEAR (NLG)	A32023-1
32-20-10	WRENCH ADAPTER - STEERING NUT, NOSE LANDING GEAR (NLG)	A32034-1
32-20-11	WRENCH - STEERING ACTUATOR, NOSE LANDING GEAR (NLG)	A32035-1
32-20-12	PROTECTOR EQUIPMENT - EXTERNALLY THREADED AXLE, NOSE LANDING GEAR (NLG)	A32097-1
32-20-13	HOLDING FIXTURE - ACTUATOR LOCK, NOSE LANDING GEAR (NLG)	A32058-1
32-20-14	BUILDUP STAND - NOSE LANDING GEAR (NLG)	A32057-1, -40
32-20-15	WRENCH - SPANNER, FACE TYPE	ST2580-381
32-20-16	REPLACEMENT EQUIPMENT - LOWER SEAL, NOSE LANDING GEAR (NLG)	A32029-26, -48, -50

CONTENTS



767

ILLUSTRATED TOOL AND EQUIPMENT MANUAL

<u>Subject</u>	<u>Title</u>	<u>Part No.</u>
32-20-17	HOIST EQUIPMENT - NOSE LANDING GEAR (NLG) INSTALLATION/REMOVAL	A32036-43, -66
32-20-18	TRANSPORTATION DOLLY - NOSE LANDING GEAR (NLG), 757 AND 767	A32038-1, -23
32-20-19	GAUGE - DOWN LOCK LINK ADJUSTMENT, NOSE LANDING GEAR (NLG)	A32094-1
32-20-20	WRENCH - ROD END	A32040-10, -12, -15, -4, -7
32-20-21	TORQUE ADAPTER - CYLINDER, NOSE LANDING GEAR (NLG) RETRACT ACTUATOR	A32041-1
32-20-22	COMPONENT MAINTENANCE EQUIPMENT - SHOCK STRUT, NOSE LANDING GEAR (NLG)	A32047-1, -29
32-30-01	WRENCH ADAPTER - GLAND NUT, MAIN LANDING GEAR (MLG)	A32004-1, -4, -5
32-30-02	PUMP - RETRACTION/EXTENSION LANDING GEAR ACTUATOR	A32027-175, -176, -178, -53
32-30-03	FIXTURE - FUNCTIONAL TEST, SIDE STRUT SPRING ASSEMBLY	A32042-1
32-30-04	TORQUE FIXTURE - ACTUATOR PISTON, MAIN LANDING GEAR (MLG) AND NOSE LANDING GEAR (NLG)	A32050-1
32-30-05	RESTRAINING WRENCH - MAIN LANDING GEAR (MLG) RETRACT ACTUATOR SUPPORT PIN	A32065-1
32-30-06	TEST STAND - TRUCK POSITIONER, MAIN LANDING GEAR (MLG)	A32068-7
32-30-07	HOLDING EQUIPMENT - ACTUATOR, MAIN LANDING GEAR (MLG) DOOR	A32059-13, -27
32-30-08	TORQUE ADAPTER - SNUBBER NUT	A32070-1
32-30-09	CLAMP EQUIPMENT - PISTON ROD, MAIN LANDING GEAR TRUCK POSITIONER ASSEMBLY	A32076-5
32-30-10	ADAPTER SET - RETAINING NUT, ACTUATOR SIDE AND DRAG BRACE, MAIN LANDING GEAR (MLG)	A32078-1
32-30-11	HOLDING FIXTURE - PISTON ROD, NOSE LANDING GEAR (NLG) LOCK ACTUATOR	A32084-1
32-30-12	FORCE GAGE EQUIPMENT - LANDING GEAR LEVER	G32021-18
32-30-13	FIXTURE - HOLDING, MAIN LANDING GEAR RETRACT ACTUATOR	A32087-1
32-30-14	LOCATING JIG - SEQUENCE VALVE, MAIN LANDING GEAR (MLG) OPERATED	A32117-1
32-30-15	TEST STAND ASSEMBLY - TRUCK POSITIONER, MAIN LANDING GEAR (MLG)	A32119-1
32-30-16	PIN PULLER EQUIPMENT - RETRACT ACTUATOR, MAIN LANDING GEAR (MLG)	A32113-1
32-30-17	FIXTURE EQUIPMENT - LANDING GEAR ACTUATOR ASSEMBLY	J32057-1, -108, -94

CONTENTS

Page 16
Oct 10/2008

D634T501



767

ILLUSTRATED TOOL AND EQUIPMENT MANUAL

<u>Subject</u>	<u>Title</u>	<u>Part No.</u>
32-30-18	FIXTURE EQUIPMENT - RETRACT ACTUATOR, MAIN LANDING GEAR (MLG)	A32122-1
32-40-01	PIN PULLER - BRAKE ROD, MAIN LANDING GEAR	A32016-17
32-40-02	WRENCH ADAPTER - WHEEL RETAINING AXLE NUT, NOSE LANDING GEAR	A32025-1
32-40-03	BRAKE DISCONNECT ASSEMBLY - FLIGHT DISPATCH	A32001-1
32-40-04	TEST FIXTURE - ACTUATOR, WHEEL BRAKE	A32060-1
32-40-05	WRENCH ADAPTER - RETAINER NUT, ANTI-SKID TRANSDUCER	A32069-1, -7
32-40-06	ADAPTER - ANTI-SKID TRANSDUCER SPIN-UP	A32075-1, -10, -9
32-40-07	INSTALLATION EQUIPMENT - BRAKE SLEEVE, MAIN LANDING GEAR (MLG)	A32100-1
32-40-08	WRENCH ADAPTER - AXLE NUT, NOSE LANDING GEAR	A32101-1
32-40-09	MEASURING EQUIPMENT - BRAKE PEDAL	J32001-63, -64
32-40-10	WRENCH EQUIPMENT - WHEEL RETENTION NUT, MAIN LANDING GEAR (MLG)	J32032-22
32-40-11	PULLER EQUIPMENT - BRAKE, MAIN LANDING GEAR	J32012-18
32-40-12	PROTECTOR EQUIPMENT - AXLE, MAIN LANDING GEAR	J32031-12
32-40-13	BRAKE DISCONNECT - FLIGHT DISPATCH	A32080-1
32-40-14	GAGE EQUIPMENT - HYDRAULIC BRAKE SYSTEM PRESSURE CHECKING	F72977-62
32-50-01	TEST FITTING - ACTUATOR, NOSE LANDING GEAR (NLG) STEERING	A32052-1
32-50-02	SPANNER WRENCH - RETAINING NUT, STEERING ACTUATOR, NOSE LANDING GEAR (NLG)	A32053-1
32-50-03	BACKLASH CHECK EQUIPMENT - NOSE LANDING GEAR (NLG) STEERING GEARBOX	A32061-1
32-50-04	COMPRESSION TOOL - SPRING CARTRIDGE NOSE WHEEL STEERING	A32071-1
32-50-05	FIXTURE - FUNCTIONAL TEST, NOSE LANDING GEAR STEERING ACTUATOR	A32072-1
32-60-01	RIGGING EQUIPMENT - LANDING GEAR, AIR/GROUND SENSORS	A32096-70, -86
32-60-02	ACTUATOR SET - PROXIMITY SENSOR	A32102-1, -25
32-60-03	RIGGING ASSEMBLY - AIR/GROUND SENSORS, RIGHT HAND MAIN LANDING GEAR (MLG)	A32123-1
32-70-01	MAINTENANCE LOCK - RETRACTABLE TAIL SKID	A32088-7
32-70-02	HOIST EQUIPMENT - TAIL SKID SHOCK STRUT	A32090-14

CONTENTS

Page 17
Oct 10/2008

D634T501



767

ILLUSTRATED TOOL AND EQUIPMENT MANUAL

<u>Subject</u>	<u>Title</u>	<u>Part No.</u>
32-70-03	LOCKOUT PIN - FORWARD AND AFT LOCK LINK, RETRACTABLE TAIL SKID	A32103-1
33-	LIGHTING	
33-00-01	TEST BOX - AUTOBRIGHT SENSOR	A33004-32
33-00-02	BREAKOUT BOX - MULTIPURPOSE	A33003-359
33-10-01	TEST BOX - MASTER DIM AND TEST PRINTED CIRCUIT (PC) CARD	A33001-1
34-	NAVIGATION	
34-00-01	TEST BOX - POWER SUPPLY CONTROL PANEL	A34013-1, -18
34-00-02	BREAKOUT BOX EQUIPMENT - ARINC 600, LINE MAINTENANCE	A34011-1, -112, -119, -165
34-00-03	EXTENDER BOX - RADIO ALTIMETER RECEIVER TRANSMITTER	C34005-1
34-00-04	ADAPTER, TRAY - ELECTRONIC FLIGHT INSTRUMENT SYSTEM (EFIS) SYMBOL GENERATOR SOFTWARE LOADING	C34006-53, -57
34-00-05	TEST BOX - TOTAL AIR TEMPERATURE PROBE, AIR DATA SYSTEM	C34012-2
34-10-01	TEST FIXTURE - ANGLE OF ATTACK	A34012-1, -19, -24
34-10-02	TEST FIXTURE - ANGLE OF ATTACK	J34002-18, -19
34-10-03	BREAKOUT BOX EQUIPMENT - ARINC 600, LINE MAINTENANCE	A34016-1, -10, -11, -16, -175, -176, -181, -186, -2, -21, -22, -23, -24, -25, -26, -27, -28, -30, -33, -34, -35, -36, -38, -42, -44, -46, -47, -48, -49, -5, -54, -59, -60, -61, -62, -63, -64, -65, -67, -69, -7, -72, -73, -8, -9
34-30-01	TEST BOX - FRONT MODULE, INSTRUMENT LANDING SYSTEM (ILS)	A34008-1
34-30-02	TEST BOX - POWER SUPPLY CONTROL PANEL	A34014-14
34-40-01	ADJUSTMENT EQUIPMENT - WEATHER RADAR ANTENNA MOUNT	G34004-17
34-50-01	WARNING EQUIPMENT - AIR TRAFFIC CONTROL (ATC), DISTANCE MEASURING EQUIPMENT (DME), VERY HIGH FREQUENCY (VHF) ANTENNA AND DRAIN MAST	A34001-1, -4
34-50-02	TEST BOX - REAR MODULE AND CONTROL PANEL, VERY HIGH FREQUENCY OMNI RANGE/DISTANCE MEASURING EQUIPMENT (VOR/DME)	A34009-29
34-50-03	TEST BOX - FRONT MODULE, VERY HIGH FREQUENCY OMNI RANGE/DISTANCE MEASURING EQUIPMENT (VOR/DME)	A34010-21

CONTENTS



767

ILLUSTRATED TOOL AND EQUIPMENT MANUAL

<u>Subject</u>	<u>Title</u>	<u>Part No.</u>
34-50-04	TEST BOX - AUTOMATIC DIRECTION FINDER (ADF) FRONT MODULE ASSEMBLY	A34005-1
34-50-05	TEST BOX - AUTOMATIC DIRECTION FINDING (ADF) CONTROL PANEL AND REAR MODULE	A34006-1, -21
34-50-06	TEST BOX - REAR MODULE AND CONTROL PANEL, INSTRUMENT LANDING SYSTEM (ILS)	A34007-33, -36
34-50-07	TEST BOX - REAR MODULE AND CONTROL PANEL, AIR TRAFFIC CONTROL (ATC)	A34003-1, -43, -46
34-50-08	TEST BOX - FRONT MODULE, AIR TRAFFIC CONTROL (ATC)	A34004-27, -30
34-50-09	TEST BOX - POWER INTERRUPT/PULSE	A34015-26, -27, -35
34-50-10	TEST FIXTURE - POWER SUPPLY CARDS/CONTROL PANEL ASSEMBLY	B34001-1
35-	OXYGEN	
35-00-01	RETRACTION EQUIPMENT - FIRING PIN, OXYGEN SYSTEM	A35001-10
35-00-02	RETRACTION EQUIPMENT - FIRING PIN, OXYGEN SYSTEM	C35003-1
35-20-01	DOOR RETAINER - PASSENGER SUPPORT UNIT (PSU) OXYGEN	A35002-10, -7
35-20-02	RESTRAINING EQUIPMENT - PASSENGER SERVICE UNIT (PCU) OXYGEN DOORS	G35003-1
36-	PNEUMATIC POWER	
36-00-01	DUMMY CHECK VALVE - INTERMEDIATE PRESSURE (IP) PNEUMATIC SYSTEM, DISPATCH EQUIPMENT	A36006-1
36-00-02	TEST EQUIPMENT - INTERMEDIATE PRESSURE (IP) DUMMY CHECK VALVE	A36007-1
36-00-03	TEST EQUIPMENT - PNEUMATIC SYSTEM HEALTH CHECK	G36035-1, -36
36-00-04	ADAPTER CABLE - BITE MODULE, AIR SUPPLY SYSTEM	A36021-1
36-10-02	REMOVAL/INSTALLATION EQUIPMENT - ENGINE PRECOOLER	A36001-1, -24, -44, -45
36-10-03	PLUG SET - PNEUMATIC DUCTS HYDROSTATIC PRESSURE TEST	A36003-173
36-10-04	INSTALLATION EQUIPMENT - CF6-80C2B BALL JOINT	A36004-15, -20
36-10-05	PLUG EQUIPMENT - DUCT TEST	B36005-2, -4
36-10-06	HOLD OPEN EQUIPMENT - PRESSURE REGULATING AND SHUT-OFF VALVE (PRSOV)	A36005-1, -15
36-10-07	PRESSURE TEST EQUIPMENT - DUCT ASSEMBLY	A36010-1
36-10-08	PRESSURE TEST EQUIPMENT - DUCT ASSEMBLY	A36011-1
36-10-09	PRESSURE TEST EQUIPMENT - DUCT ASSEMBLY	A36012-1
36-10-10	PRESSURE TEST EQUIPMENT - DUCT ASSEMBLY	A36013-1
36-10-11	PRESSURE TEST EQUIPMENT - DUCT ASSEMBLY	A36008-1
36-10-12	PRESSURE TEST PLUG - DUCT ASSEMBLY	A36016-1

CONTENTS



767

ILLUSTRATED TOOL AND EQUIPMENT MANUAL

<u>Subject</u>	<u>Title</u>	<u>Part No.</u>
36-10-13	PRESSURE TEST EQUIPMENT - DUCT ASSEMBLY	A36009-1
36-10-14	PRESSURE TEST EQUIPMENT - DUCT ASSEMBLY	J36010-1
36-10-15	PRESSURE TEST EQUIPMENT - DUCT ASSEMBLY	A36014-1
36-10-16	PRESSURE TEST EQUIPMENT - DUCT ASSEMBLY	A36015-1
36-10-17	PLUG - DUCT, PROOF PRESSURE TEST	A36017-1
36-10-18	PLUG EQUIPMENT - DUCT, PROOF PRESSURE TEST	A36018-1
36-10-19	PLUG EQUIPMENT - DUCT, PROOF PRESSURE TEST	A36019-1
36-10-20	PLUG EQUIPMENT - DUCTS, PROOF PRESSURE TEST	A36020-1
36-10-21	REMOVAL/INSTALLATION EQUIPMENT - RB211 PRECOOLER	A36022-1
38-	WATER/WASTE	
38-10-01	TEST BOX - SIGNAL UNIT PRINTED CIRCUIT ASSEMBLY (PCA) POTABLE WATER	A38002-1
38-10-02	TEST CABLE - POTABLE WATER QUANTITY TRANSMITTER	A38010-1, -11
38-10-04	DOOR SWITCH ACTUATOR - POTABLE WATER SERVICE PANEL	A38014-1
38-30-01	PLUGS - VENT, VACUUM WASTE SYSTEM	A38001-16, -22
38-30-02	BLOCKAGE REMOVER - VACUUM TOILET	A38003-20
38-30-03	CLEANER EQUIPMENT - WASTE TANK SENSORS	A38004-29
38-30-04	ROOTER - WASTE WATER DRAIN LINE	A38005-1, -7
38-30-05	TESTER - TOILET VACUUM	A38006-1
38-30-06	PLUG - VACUUM WASTE SYSTEM	A38007-1
38-30-07	SENSOR CLEANER - LAVATORY WASTE TANK	A38009-1, -11
38-30-08	BLOCKAGE REMOVAL TOOL - VACUUM LAVATORY SYSTEM	G38004-10, -13
38-30-09	PLUG EQUIPMENT - DRAIN MAST, WASTE WATER	A38011-1
38-30-10	BLOCKAGE REMOVAL EQUIPMENT - VACUUM WASTE SYSTEM	G38006-1
38-30-11	TEST CHAMBER EQUIPMENT - LAVATORY SERVICE PANEL	G38005-1, -111, -61
38-30-12	DRAIN MAST PLUG - WASTE WATER	C38001-23
38-30-13	PUMP EQUIPMENT - VACUUM LAVATORY SYSTEM	A38012-1, -18, -31, -32, -39, -40
38-30-14	PRESSURIZATION EQUIPMENT - WASTE DRAIN SYSTEM	J38001-16
49-	AUXILIARY POWER	
49-00-01	CRADLE - AUXILIARY POWER UNIT (APU)	A49001-17, -3, -73, -78, -83, -84
49-00-02	TRANSPORTATION DOLLY - AUXILIARY POWER UNIT (APU)	A49003-1, -12
49-00-03	SUPPORT EQUIPMENT - AUXILIARY POWER UNIT	A49004-1
49-00-04	SLING - AUXILIARY POWER UNIT (APU) SHOP HANDLING	A49005-1, -12
49-00-05	FRAME - AUXILIARY POWER UNIT (APU) INSTALLATION AND REMOVAL	B49001-35

CONTENTS

Page 20
Oct 10/2008

D634T501



767

ILLUSTRATED TOOL AND EQUIPMENT MANUAL

<u>Subject</u>	<u>Title</u>	<u>Part No.</u>
49-00-06	STAND - AUXILIARY POWER UNIT (APU), MAINTENANCE AND TRANSPORTATION	B49002-64
49-00-07	SLING - AUXILIARY POWER UNIT (APU) HANDLING	B49003-1, -10
49-00-08	JACKING EQUIPMENT - HYDRAULIC TELESCOPING	J20009-38, -70, -78
49-10-01	TESTER - AUXILIARY POWER UNIT (APU) FUEL MANIFOLD	833563-6
49-10-02	KIT - AUXILIARY POWER UNIT (APU) DEACTIVATION	A49009-1
49-50-01	WRENCH - AUXILIARY POWER UNIT (APU) TRANSDUCER REMOVAL	294864-1
51-	STRUCTURES	
51-00-01	SERVICE PLATFORM FORWARD OF THE AUXILIARY POWER UNIT (APU) DOOR	A51001-19
51-00-02	LADDER SET - EMPENNAGE, PRESSURE BULKHEAD	A51004-1
51-00-03	"OIL CAN" GAGE - PRESSURE BULKHEAD	A51005-14
51-00-04	MEASUREMENT EQUIPMENT - CHECK, SKIN SMOOTHNESS	A51006-26
51-00-05	FALL PROTECTION - OVERHEAD PERSONNEL SUPPORT	G51002-1
51-00-06	MAINTENANCE PLATFORM EQUIPMENT - PRESSURE BULKHEAD ACCESS	A51007-1
51-00-07	FALL PROTECTION - OVERHEAD PERSONNEL SUPPORT	G51003-1
51-00-08	ALIGNMENT EQUIPMENT - AIRPLANE STRUCTURAL REPAIR	A51002-1
51-00-09	STATIC BALANCE EQUIPMENT - CONTROL SURFACES	F70330-4, -87
51-00-10	STATIC BALANCE EQUIPMENT - FLIGHT CONTROL SURFACES	J51003-1
51-00-11	BALANCE STAND - OUTBOARD AILERON, UPPER RUDDER AND OUTBOARD ELEVATOR	2CF65B05528-1
52-	DOORS	
52-00-02	INSTALLATION TOOL - DOOR SEAL	B52004-1
52-10-01	SAFETY BARRIER - ENTRY, MID-ENTRY OR SERVICE DOOR	A52002-1, -13
52-10-02	TEST EQUIPMENT - LATCH LOCK, LARGE CARGO DOOR LATCH LOCK	A52018-1, -15
52-10-03	LOCK - COUNTERBALANCE, ENTRY AND SERVICE DOORS	A52003-1
52-10-04	GROUND LOCK - ENTRY/SERVICE DOOR	A52008-14
52-10-05	DUMMY WEIGHT SLIDE PACK - PASSENGER AND SERVICE DOOR	A52013-31
52-10-06	TEST FIXTURE - GEARBOX, OVERHEAD PASSENGER DOOR COUNTERBALANCE	A52017-1
52-10-07	MANDREL EQUIPMENT - BEARING INSTALLATION	A52020-1
52-10-08	CANOPY - FORWARD ENTRY DOOR	A52022-1
52-10-09	STAKING EQUIPMENT - GIRT BAR BEARING	A52030-1

CONTENTS



767

ILLUSTRATED TOOL AND EQUIPMENT MANUAL

<u>Subject</u>	<u>Title</u>	<u>Part No.</u>
52-10-10	SHAFT SUPPORT - COUNTERBALANCE, OVERHEAD PASSENGER DOOR	A52015-1, -3
52-20-01	SAFETY BARRIER - AFT EMERGENCY EXIT	A52027-1
52-20-02	GAGE - GIRT BAR, CARRIER DRIVE	A52029-1
52-30-01	SAFETY BARRIER - CARGO DOOR, FORWARD/AFT	A52005-1
52-30-02	SLING EQUIPMENT - DOOR HANDLING	A52004-41, -42, -43
52-30-03	REPLACEMENT EQUIPMENT - BULK CARGO DOOR	A52006-1
52-30-04	SAFETY BARRIER - FORWARD LARGE CARGO DOOR	A52007-1
52-30-05	TEST FIXTURE - BUNGEE SPRING, CARGO DOOR	A52009-1, -22
52-30-06	CLAMP EQUIPMENT - SPRING INSTALLATION/REMOVAL, BULK CARGO DOOR	A52010-50, -51
52-30-08	ADJUSTMENT SET - MAIN LATCH PIN, LARGE CARGO DOORS	A52014-1
52-30-09	RIGGING ADJUSTMENT EQUIPMENT - FORWARD AND AFT CARGO DOORS	A52016-1
52-30-10	DRIVER SET - HINGE PIN, LARGE CARGO DOOR	A52019-1
52-30-11	WRENCH - PROXIMITY SENSOR, BULK CARGO DOOR	A52021-1
52-30-12	BACKLASH CHECK EQUIPMENT - MANUAL DRIVE, LARGE CARGO DOOR	A52023-1
52-30-13	VERIFICATION EQUIPMENT - MAIN LATCH FITTINGS, LARGE CARGO DOOR	A52028-1
52-30-14	RIGGING EQUIPMENT - MAIN DECK CARGO DOOR	A52031-1
52-30-15	ADJUSTMENT TOOL SET - LATCH PINS, MAIN DECK CARGO DOOR	A52032-17
52-30-16	PERSONNEL SAFETY BARRIER - MAIN DECK CARGO DOOR	F70258-1
52-30-17	TORQUE WRENCH ADAPTER - BRAKES, SIDE CARGO DOOR	ME65B83635
52-30-18	VERIFICATION EQUIPMENT - MAIN LATCH FITTINGS, MAIN DECK CARGO DOOR	A52033-1
52-30-19	SLING EQUIPMENT - MAIN DECK CARGO DOOR	A52036-1
52-30-20	RIGGING EQUIPMENT - ROTARY ACTUATOR, MAIN DECK CARGO DOOR	A52034-1
52-30-21	DRIVER EQUIPMENT - INTERMEDIATE HINGE PINS, MAIN DECK CARGO DOOR	A52035-1
52-40-01	SAFETY BARRIER - ELECTRICAL/ELECTRONIC (E/E) ACCESS HATCH	A53002-5
52-40-02	SERVICE PLATFORM - SERVICE ACCESS DOOR	A52025-1
52-40-03	TEST EQUIPMENT - LATCH ASSEMBLY, BLOW OUT DOORS	J52024-2, -3
52-50-01	TEST BOX - FLIGHT DECK ACCESS SYSTEM (FDAS)	A52037-1
53-	FUSELAGE	
53-30-01	PROBE - FILM RESISTANCE MEASURING	F70328-1

CONTENTS

Page 22
Oct 10/2008

D634T501

BOEING PROPRIETARY - Copyright © Unpublished Work - See title page for details



767

ILLUSTRATED TOOL AND EQUIPMENT MANUAL

<u>Subject</u>	<u>Title</u>	<u>Part No.</u>
53-50-01	SLING - RADOME	A53001-14
54-	NACELLES/PYLONS	
54-00-01	DRILL JIG - SIDE LINK, NACELLE STRUT	A54002-19, -9
54-00-02	HYDRAULIC PUMP - ENGINE "C" DUCT	B54001-30
54-10-01	PULLER EQUIPMENT - FUSE PIN	A54008-1, -13
54-50-01	SLING EQUIPMENT - STRUT UNLOAD, PIN REMOVAL/ INSTALLATION	A54001-165, -167, -168
54-50-02	SLING EQUIPMENT - STRUT REMOVAL AND INSTALLATION	A54003-1, -41, -42, -51
54-50-03	PRELOAD EQUIPMENT - STRUT INSTALLATION	A54004-27
54-50-04	SLING EQUIPMENT - STRUT, RB211-524H	A54012-1
54-50-05	SLING - DIAGONAL BRACE UNLOAD/RB211-524 ENGINE	A54007-15
54-50-06	PROOFLOAD FIXTURE RB211-524H STRUT SLING	A54009-1
54-50-07	REMOVAL TOOL - SPLIT BUSHING	B54016-1
54-50-08	REMOVAL/INSTALLATION KIT - MIDSPAR FUSE PIN	A54011-18, -24, -25, -26
54-50-09	STRUT SLING - PRELOAD/UNLOAD, DIAGONAL BRACE	G54007-165, -82, -91, -93
54-50-10	STRUT UNLOAD SLING - DIAGONAL BRACE ALIGNMENT	J54001-73, -74, -75, -76
55-	STABILIZER	
55-10-01	LOCK EQUIPMENT - HORIZONTAL STABILIZER	A55001-19, -22, -47
55-10-02	REMOVAL EQUIPMENT - PIVOT BEARING, HORIZONTAL STABILIZER	A55005-1
55-10-03	JACKING EQUIPMENT - HINGE, HORIZONTAL STABILIZER	A55004-98
55-10-04	TEMPLATE - BLADE SEAL FITTING, HORIZONTAL STABILIZER	A55006-1
55-10-05	REMOVAL/INSTALLATION EQUIPMENT - PIVOT BEARING HORIZONTAL STABILIZER	A55007-1
55-10-06	REMOVAL/INSTALLATION EQUIPMENT - PIVOT BEARING, HORIZONTAL STABILIZER	A27114-1
55-20-01	ALIGNMENT EQUIPMENT - HINGE, INBOARD ELEVATOR	A55003-1
55-30-01	SLING - VERTICAL FIN INSTALLATION AND REMOVAL	A07007-33
55-30-02	TORQUE MULTIPLIER EQUIPMENT - TENSION BOLTS, VERTICAL FIN	A07006-1
56-	WINDOWS	
56-00-01	SLING SET - NUMBER 1 AND 3 COCKPIT WINDOW	A56001-15
56-10-01	REPAIR SET - NUMBER 2 WINDOW	A56004-60

CONTENTS

Page 23
Oct 10/2008

D634T501



767

ILLUSTRATED TOOL AND EQUIPMENT MANUAL

<u>Subject</u>	<u>Title</u>	<u>Part No.</u>
57-	WINGS	
57-30-01	SLING - RAKED WING TIP, INSTALLATION AND REMOVAL	A57004-1
57-30-02	Protective Equipment - Protective Ring for Lower Wing Panel Access Door	C28013-6
57-40-01	LOCATING EQUIPMENT - WEDGE REPLACEMENT, INBOARD AND OUTBOARD LEADING EDGE SLAT	A57003-1
57-40-02	LUBRICATING EQUIPMENT - LEADING EDGE SLAT AUXILIARY ARM ROLLER BOLT	A57007-8
57-50-01	REPLACEMENT EQUIPMENT - OUTBOARD TRAILING EDGE FLAP	A57002-1
57-50-02	SOCKET ASSEMBLY - RETENTION NUT, MAIN LANDING GEAR ACTUATOR SUPPORT, WING	A57005-1
57-50-03	SPANNER WRENCH - SPECIAL NUT, INBOARD TRAILING EDGE MAIN FLAP	A57006-1
57-50-04	REMOVAL / INSTALLATION EQUIPMENT - MAIN LANDING GEAR BOTTLE PIN	A57008-1
71-	POWER PLANT	
71-00-01	BOOTSTRAP EQUIPMENT - PRATT AND WHITNEY ENGINES	A71001-191
71-00-02	PROOF LOAD FIXTURE - BOOTSTRAP, PRATT AND WHITNEY ENGINES, JT9D7R4 AND PW4000	A71007-27, -39
71-00-03	SLING EQUIPMENT - PRATT AND WHITNEY ENGINE	A71008-1, -64, -65
71-00-04	PROOF LOAD EQUIPMENT - CRADLE, PRATT AND WHITNEY ENGINE	A71012-35
71-00-05	HOIST ADAPTER - INTEGRATED DRIVE GENERATOR	A71013-19, -32, -40, -45, -55, -82, -88
71-00-06	LIFT SLING - CORE COWL	A71017-1
71-00-07	PT2 PROBE ADAPTER	A71049-1
71-00-08	TORQUE EQUIPMENT - ENGINE MOUNTS, JT9D-7R4D AND PW4000 ENGINES	A71003-25, -41, -53, -54
71-00-09	BOOTSTRAP EQUIPMENT - GENERAL ELECTRIC ENGINE	A71011-262, -263
71-00-10	ENGINE HANDLING EQUIPMENT - CF6-80A	A71019-60
71-00-11	PROOF LOAD FIXTURE - CRADLE, CF6-80A ENGINE	A71020-1
71-00-12	PROOF LOAD FIXTURE - BOOTSTRAP, GE ENGINES	A71021-52
71-00-13	CRADLE - CF6-80A ENGINE 90 - INCH RAIL	A71023-53, -56
71-00-14	CRADLE - PRATT AND WHITNEY ENGINES, 90-INCH RAIL	A71006-79
71-00-15	SUPPORT PEDESTAL EQUIPMENT - CF6-80A ENGINE BUILDUP	A71025-1
71-00-16	LOCATING JIG - CF6-80A BUILDUP-TO-STRUT SYSTEM INTERFACES	A71024-1, -51, -68, -70

CONTENTS

Page 24
Oct 10/2008

D634T501



767

ILLUSTRATED TOOL AND EQUIPMENT MANUAL

<u>Subject</u>	<u>Title</u>	<u>Part No.</u>
71-00-17	LOCATING JIG - ENGINE BUILDUP TO STRUT SYSTEMS INTERFACES JT9D-7R4D ENGINE	A71022-1, -60
71-00-18	HOLD OPEN EQUIPMENT - FAN COWL, 40 KNOTS, PRATT AND WHITNEY ENGINES	A71030-32
71-00-19	HOLD-OPEN EQUIPMENT - 40 KNOTS, PRATT AND WHITNEY CORE COWLS	A71032-14
71-00-20	WRENCH - AFT FLIGHT MOUNT ENGINE BUILDUP (EBU) "B" PACKAGE	A71034-1, -2, -3
71-00-21	TEST EQUIPMENT - ENGINE PRESSURE MONITORING	B71034-13, -29, -48
71-00-22	HOLD OPEN EQUIPMENT - FAN COWL, 20 KNOT, JT9D-7R4 ENGINE	A71029-36
71-00-23	MONITORING ASSEMBLY - BREATHER PRESSURE, JT9D-7R4 ENGINE	A71036-1
71-00-24	TEST EQUIPMENT - DRYING AND LEAK CHECK, JT9D-7R4D GEARBOX	A71037-1
71-00-25	COVER EQUIPMENT - BLEED VALVE, GE ENGINE	A71035-1, -13, -27
71-00-26	GUARD - INLET, ENGINE RUN-UP	A71042-1, -29
71-00-27	EQUIPMENT - ENGINE SUPPORT	PWA 25056, 25757, 25758, 29245
71-00-28	SLING EQUIPMENT - ENGINE INLET COWL	A71005-33
71-00-29	SPECIFICATION - FLUSH CART, ENGINE INTEGRATED DRIVE GENERATOR (IDG) COOLING SYSTEM	A71040
71-00-30	SLING EQUIPMENT - INLET COWL, CF6-80C2B ENGINE	G71007-28
71-00-32	PROOF LOAD EQUIPMENT - CRADLE, CF6-80C2B ENGINE	G71008-1
71-00-33	CRADLE - CF6-80C2B ENGINE	G71002-48
71-00-34	SLING - ENGINE HANDLING, GE ENGINES	G71010-79, -80, -81
71-00-35	STORAGE STAND - SPARE ENGINE CARRIAGE	A71045-1
71-00-36	LOCATING JIG - ENGINE BUILDUP TO STRUT, CF6-80C2B ENGINE	G71012-107, -118, -119
71-00-37	BEAM - ENGINE HANDLING, RB211-524	G71014-1
71-00-38	SLING - FAN COWL, CF6-80C2B ENGINE	G71013-1
71-00-39	WRENCH - FLEX NUT, 15TH STAGE, MANIFOLD AND DUCT, PW4000	G71020-1
71-00-40	PROOF LOAD FIXTURE - RB211-524 ENGINE	G71017-1
71-00-41	SUPPORT EQUIPMENT - RB211-524 ENGINE, H2 HANDLING ATTACHMENT	G71018-1
71-00-42	CRADLE - RB211-524 (G AND H) ENGINE	G71015-75
71-00-43	PROOF LOAD FIXTURE - BOOTSTRAP, RB211 ENGINE	A71048-1
71-00-44	BOOTSTRAP EQUIPMENT - RB211-524H	A71047-150

CONTENTS

Page 25
Oct 10/2008

D634T501



767

ILLUSTRATED TOOL AND EQUIPMENT MANUAL

<u>Subject</u>	<u>Title</u>	<u>Part No.</u>
71-00-45	LOCATING JIG - ENGINE BUILDUP (EBU) TO STRUT, SYSTEM PW4000	A71046-1
71-00-46	ADAPTER EQUIPMENT - LOAD TEST, PRESSURE RELIEF DOOR LATCH	B71044-10, -28
71-00-47	TORQUE EQUIPMENT - ENGINE MOUNT BOLTS, RB211-524G/H	A71054-1
71-00-48	TOOL SET, RB211 ENGINE MOUNT BOLT	3MIT65B89603
71-00-49	SPECIFICATION - POWERED HOIST SYSTEM, GROUND SUPPORT EQUIPMENT (GSE) OPERATIONS	J71006
71-10-01	HOLD OPEN EQUIPMENT - ENGINE FAN/CORE COWL, CF6-80C2B	G71022-44
71-10-02	SLING EQUIPMENT - CORE COWL	A71016-1, -23
71-10-03	HOLD OPEN EQUIPMENT - 40-KNOT, CF6-80A FAN COWL	A71026-1
71-10-04	HOLD OPEN EQUIPMENT - 40-KNOT, CF6-80A CORE COWL	A71033-31
71-10-05	HOLD OPEN EQUIPMENT - FAN COWL, 20 KNOTS, CF6-80A ENGINE	A71027-1
71-10-06	SLING EQUIPMENT - INLET COWL	B71040-36, -37, -39
71-10-07	HOLD OPEN EQUIPMENT - 20 KNOT, PW4000 FAN AND CORE COWLS	G71023-52
71-10-08	TEST/OVERHAUL EQUIPMENT - COWL DOOR ACTUATOR	A78021-45, -46
71-10-09	HOLD OPEN BRACKET - JT9D ENGINE	A71050-1
71-10-10	TRANSPORTATION AND STORAGE PALLET - INLET COWL, CF6-80C2B ENGINE	A71051-1
71-10-11	SLING EQUIPMENT - INLET COWL, CF6-50 AND RB211-524 ENGINES	G71032-1
71-10-13	SLING EQUIPMENT - NOSE COWL, RB211-524 AND CF6-50 ENGINES	G71030-1
71-20-01	ALIGNMENT HANDLE - FORWARD ENGINE MOUNT	A71038-1
73-	ENGINE FUEL AND CONTROL	
73-20-01	ASPIRATOR - TT2 PROBE, JT9D-7R4D ENGINE	A71031-1
73-20-02	TEST CABLE - ELECTRONIC ENGINE CONTROL, JT9D-7R4D	A73001-1
73-20-03	WRENCH - MAIN ENGINE CONTROL, CF6-80C2, REMOVAL/INSTALLATION	A73002-10
76-	ENGINE CONTROLS	
76-10-01	TEST FIXTURE - THRUST LEVER, CONTROL STAND	A76001-1
76-10-02	RIGGING EQUIPMENT - ENGINE CONTROL SYSTEM	B76003-1
76-10-03	ADAPTER - THRUST CONTROL INNER SHAFT	B76004-1
76-10-04	WRENCH - SPANNER, THRUST LEVER CONTROL STAND SHAFT ASSEMBLY	J76002-1

CONTENTS

Page 26
Oct 10/2008

D634T501



767

ILLUSTRATED TOOL AND EQUIPMENT MANUAL

<u>Subject</u>	<u>Title</u>	<u>Part No.</u>
76-10-05	PROTRACTOR - THRUST REVERSER LEVERS, FORWARD AND REVERSE	G76002-15
77-	ENGINE INDICATING	
77-10-01	TEST BOX - TACHOMETER SYSTEM	A77004-18, -19
77-10-02	TEST EQUIPMENT - ENGINE N1 AND N2 INTERFACE	A77005-59, -60, -61
77-20-01	TEST EQUIPMENT - INDICATING SYSTEM, EXHAUST GAS TEMPERATURE (EGT)	A77003-18
77-30-01	TEST BOX - ELECTRONIC ENGINE CONTROL MONITOR POWER SUPPLY	A77001-1
77-30-02	TEST BOX - DISPLAY BOARD, ELECTRONIC ENGINE CONTROL MONITOR	A77002-1
77-30-03	TEST BOX - GENERIC AIRBORNE VIBRATION MONITOR (AVM) INTERFACE	C77004-10
78-	EXHAUST	
78-00-01	HOLD OPEN EQUIPMENT - THRUST REVERSER, 40 KNOT	A78001-21, -22, -31, -48
78-00-02	THREAD PROTECTOR EQUIPMENT - THRUST REVERSER REMOVAL/INSTALLATION	A78002-1, -8, -9
78-00-03	ADAPTER EQUIPMENT - THRUST REVERSER HOLD OPEN ROD	G78005-10
78-10-01	TENSION LATCH WRENCH SET - FAN DUCT	A78005-5
78-10-02	SLING - EXHAUST SLEEVE, ENGINE	A78013-1, -11, -2
78-10-03	CRADLE - EXHAUST NOZZLE	A78003-28, -41
78-10-04	HOIST EQUIPMENT - REMOVAL/INSTALLATION, INTEGRATED NOZZLE ASSEMBLY (INA)	A78020-66
78-30-01	SLING EQUIPMENT - THRUST REVERSER - JT9D-7R4D AND PW4000	A71002-50
78-30-02	SLING - THRUST REVERSER CF6-80A	A71009-25, -26
78-30-03	LOCK - THRUST REVERSER ISOLATION VALVE (GROUND AND FLYAWAY)	B78001-1, -14, -2, -5
78-30-04	WRENCH - CROWFOOT, TUBING NUT, FLOW CONTROL, THRUST REVERSER	A78012-1
78-30-05	CHECK FIXTURE - SPRING INTERLOCK BELLCRANK, JT9D	A78010-1
78-30-06	STAND SUPPORT - FAN DUCT COWL AND THRUST REVERSER	A78011-69, -70
78-30-07	CLAM SHELL EQUIPMENT - TRACK SLIDER, THRUST REVERSER	A78014-1
78-30-08	REWORK JIG - HINGE, BLOCKER DOORS, THRUST REVERSER (PRATT & WHITNEY)	A78015-1
78-30-09	HAND PUMP - OPENING SYSTEM, THRUST REVERSER	C78005-21
78-30-10	ADAPTER - PROTRACTOR, THRUST REVERSER LEVER	A27097-1

CONTENTS

Page 27
Oct 10/2008

D634T501



767

ILLUSTRATED TOOL AND EQUIPMENT MANUAL

<u>Subject</u>	<u>Title</u>	<u>Part No.</u>
78-30-11	HOLD OPEN SET - THRUST REVERSER COWL, CF6-80C2B ENGINE	G78002-1
78-30-12	SLING EQUIPMENT - FAN REVERSER, CF6-80C2B ENGINE	G78003-53
78-30-13	SLING - FAN REVERSER OPENING	A78017-1
78-30-14	SLING - SLEEVE, THRUST REVERSER CF6-80A	A78007-1
78-30-15	SLING - SLEEVE, THRUST REVERSER	A78008-1, -16
78-30-16	SLING - THRUST REVERSER TRANSLATING SLEEVE, CF6-80C2	A78018-11
78-30-17	DOLLY - THRUST REVERSER, CF6-80C2 ENGINE	G78006-74, -75
78-30-18	HAND PUMP - OPENING SYSTEM, THRUST REVERSER	A78019-21
78-30-19	REPAIR FIXTURE EQUIPMENT - PW4000 ENGINE THRUST REVERSER	A78023-1, -121, -89
78-30-20	ALIGNMENT FIXTURE - INNER FAN DUCT WALL CF6-80A ENGINE	A78024-1
78-30-21	BREAKOUT BOX - TEST, THRUST REVERSER	A78025-1, -77
80-	STARTING	
80-10-01	DRIVE EXTENSION - STARTER VALVE AND PRESSURE REGULATING AND SHUTOFF VALVE (PRSOV)	G71021-16

CONTENTS

Page 28
Oct 10/2008

D634T501



767

ILLUSTRATED TOOL AND EQUIPMENT MANUAL

LICENSE AGREEMENTS

In accordance with licensing agreements and Boeing supplied technical data, Boeing designated special tools and ground handling equipment listed in this document are licensed to be supplied by the following GSE suppliers.

These supplier agreements are not intended to prevent airline customers from manufacturing or having manufactured all items listed in this document. Tool fabrication drawings are provided to assist suppliers in tool manufacture.

LICENSE AGREEMENTS WITH GSE SUPPLIERS

ALL GSE ITEMS (MECHANICAL-ELECTRICAL-ELECTRONIC) - ALL MODELS

1. Aero Info, Incorporated
20485 Silver Dawn Drive
Sonora, CA 95370 USA
Attn: Mike Wilson
Telephone: (209) 533-2868
Fax: (209) 536-0497
E-mail or Web: www.aeroinfoinc.com
Vendor Code: 52303

2. Aero Supply and Consulting
11701 N.W. 102nd Road, Suite 10
Medley, Florida 33178 USA
Attn: Daily Boffill
Telephone: (305) 885-2758
Fax: (305) 885-2869
E-mail or Web: www.aerosupply.org
Vendor Code: 1CPC0

3. Air Spares, Incorporated
609 N. Levee Road
Puyallup, WA 98371 USA
Attn: Ken Powell
Telephone: (253) 286-2525 or (800) 523-3088
Fax: (253) 286-2526
E-mail or Web: www.airspares.com
Vendor Code: 8M213

4. DCM Aeronautique
519 Papineau Street
Boisbriand, Quebec
J7G 2B7 Canada
Attn: Danielle Dery
Telephone: (450) 435-9499
E-mail or Web: www.dcmaeronautique.com

LICENSE AGREEMENT



767

ILLUSTRATED TOOL AND EQUIPMENT MANUAL

(Continued)

5. Farwest Aircraft, Incorporated
P. O. Box 1889
Milton, WA 98354 USA
Attn: Frank Gutfrucht
Telephone: (253) 568-1707
Fax: (253) 927-3478
E-mail or Web: www.farwestair.com
Vendor Code: 34107

6. Industrial Automation, Incorporated
1421 S. 93rd Street
Seattle, WA 98108 USA
Attn: Trevor Deffner
Telephone: (206) 763-1025
Fax: (206) 763-3226
E-mail or Web: www.iagse.com
Vendor Code: 053H3

7. Messier Services Asia, PTE Limited
21 Loyang Crescent
Singapore 508985
Attn: Wen Ting
Telephone: 65-545-9455
Fax: 65-542-3936
E-mail or Web: www.messierservices.com

8. Modern Machine Company
519 S. Elmgrove Street
Seattle, WA 98708
Attn: Jim Nye
Telephone: (206) 764-6997
Fax: (206) 764-7094
E-mail or Web: www.modernmachine.us

9. Quality Aircraft Tooling
1048 King Industrial Drive
Marietta, GA 30062 USA
Attn: Benny McCleskey
Telephone: (770) 429-8157
Fax: (770) 423-9807
E-mail or Web: www.qualityaircrafttooling.com
Vendor Code: 0AHE0

LICENSE AGREEMENT

Page 2
Apr 10/2007

D634T501



767

ILLUSTRATED TOOL AND EQUIPMENT MANUAL

(Continued)

10. Sinters SAS
5 rue Paul Mesple
BP 1311 - 31106
Toulouse Cedex 01 France
Attn: Thierry Casamian
Telephone: 33-562-11-1717
Fax: 33-562-11-1749
www.sinters.fr

11. Spec Tool Company
P. O. Box 1056
Pico Rivera, CA 90660 USA
Attn: David Fink
Telephone: (562)-945-3351
Fax: (562) 945 + 3359
E-mail or Web: spectool@verizon.net (no website)

12. Techman-Head
BP 208
83089 Toulon Cedex 09
France
Attn: Rene Formento
Tel: 33-4-94-01-71-80
Fax: 33-4-94-08-20-87
tmh@tmhfrance.com
Vendor Code: F8303

CANADA ADDRESS:
TMH Canada Incorporated
628, Cure Boivin
Boisbriand (Quebec) J7G 2A7 Canada
Remy Benois
Telephone: (450) 433-7733
Fax: (450) 433-7086
E-mail or Web: www.techman-head.com
sales@tmhcanada.com

LICENSE AGREEMENT

D634T501

Page 3
Apr 10/2007



767

ILLUSTRATED TOOL AND EQUIPMENT MANUAL

(Continued)

13. Turnmil Engineering
Riverside Industrial Estate
Glanamman Ammananford
Carmarthenshire SA18 1LQ Wales
Attn: Ceri Ace
Telephone: 44 1269 824570
Fax: 44 1269 824650
E-mail or Web: www.turnmil.co.uk
Vendor Code: KC969

ELECTRICAL/ELECTRONIC GSE/TOOLING - ALL MODELS

NOTE: Aircraft Tool and Equipment, Incorporated has been removed.

MECHANICAL AND ENGINE HANDLING GSE/TOOLING- ALL MODELS

1. Advanced Ground Systems Engineering Corporation (AGSE)
10805 Painter Avenue
Santa Fe Springs, CA 90670 USA
Attn: Frank Judge
Telephone: (562) 906-9300
Fax: (562) 906-9308
E-mail or Web: www.agsecorp.com
Vendor Code: 9M323

2. Dedienne Corporation
17 Rue Aristide Berges
ZA du Casque II
31270 Cugnaux, France
Attn: Cedric Barbe
Telephone: 33 561 06 7779
Fax: 33 561 06 8113
E-mail or Web: [mail: contact@dedienne-aero.com](mailto:contact@dedienne-aero.com)
www.dedienne-aerospace.com
Vendor Code: V FA9P7

USA ADDRESS:

Dedienne Aerospace - USA
2112 NW 99 th Avenue #12
Miami, FL 33172 USA
Attn: Karel Volot
Telephone: (305) 716-8300
Fax: 305) 716-8302
E-mail or Web: contact.miami@dedienne-aero.com
www.dedienne-aerospace.com

LICENSE AGREEMENT



767

ILLUSTRATED TOOL AND EQUIPMENT MANUAL

(Continued)

3. Frank Brown & Son (Luton) Limited
87-105 Wingate Road
Luton Bedfordshire LU4 8QA
United Kingdom
Attn: Clive Brown
Telephone: 44-1582-597246
Fax: 44-1582-505959
E-mail or Web: www.frankbrown.co.uk
Vendor Code: U8183

4. Franke GMBH
1 Ohlendorfer Strasse 4
21220 Seevetal (Ramelsloh)
Germany
Attn: Andreas Stapelfeldt
Telephone: 49-4185-7000-35
Fax: 49-4185-7000-10
E-mail or Web: www.franke-gse.com

5. Hydro-Geratebau GMBH & Company
Ahfeldstrasse 10
D-77781 Biberach/Baden
Germany
Attn: Thomas Hoh
Tel: 49-7835-7870
Fax: 49-7835-1823
E-mail or Web: www.hydro.de
Vendor Code: D2029

USA ADDRESS:

Hydro USA Company
1220 37th St., N.W. Suite 101
Auburn, WA. 98001 USA
Attn: Mattias Korward
Telephone: (253) 876-2100
Fax: (253) 876-2110
E-mail or Web: email: sales@hydrousaco.com
www.hydro.de
Vendor Code: 1JJE1

LICENSE AGREEMENT

Page 5
Apr 10/2007

D634T501



767

ILLUSTRATED TOOL AND EQUIPMENT MANUAL

(Continued)

6. May Technology and Manufacturing
2922 Wheeling
Kansas City, MO 64129 USA
Attn: Steve May
Telephone: (816) 923-6262
Fax: (816) 923-6277
E-mail or Web: email: maytech@mayinc.com)
Vendor Code: 2X572

7. Menches Tool & Die, Incorporated
30995 San Benito Street
Hayward, CA 94544 USA
Attn: John Menches
Telephone: (510) 476-1160
Fax: (510) 476-1164
E-mail or Web: www.menches.com
Vendor code: 28033

8. Precision Profiles Limited
Southway Drive, North Common
Warmley Bristol
BS30 5LW England
Attn: Andy Finn
Telephone: 44-11-7960-9966
Fax: 44-11-7960-9988
E-mail or Web: www.precisionprofiles.co.uk/contact/associat.htm

9. Rhinestahl Corporation
6510 Corporate Drive
Cincinnati, OH 45242 USA
Attn: Dieter Moeller
Telephone: (513) 489-1317
Fax: (513) 489-3899
E-mail or Web: www.rhinestahl.com

10. Time Aviation Services
28402 W. Livingston Avenue
Valencia, CA 91355 USA
Attn: Claudia Douglas
Telephone: (661) 702-0800
Fax: (661) 702-0888
E-mail or Web: www.timeaviation.com
Vender Code: 1XBT9

LICENSE AGREEMENT

Page 6
Apr 10/2007

D634T501



767

ILLUSTRATED TOOL AND EQUIPMENT MANUAL

(Continued)

NOTE: Regent Manufacturing, Incorporated has been removed.

LICENSE AGREEMENT

D634T501

Page 7
Apr 10/2007



767

ILLUSTRATED TOOL AND EQUIPMENT MANUAL

INTRODUCTION

This Illustrated Tool and Equipment Manual (ITEM) is prepared in conformance to the Air Transport Association of America Specification 100 (Revision 33, Jan 15, 1995).

The Illustrated Tool and Equipment Manual provides operators of Boeing 767-200 /-300 /-400 airplanes descriptive information, illustrations and explanations for use of Boeing-designed tools, ground handling and test equipment recommended by Boeing to facilitate airplane maintenance, component maintenance and servicing. Tool and equipment classification is arranged by chapter/section/subject as specified in the ATA Specification 100. Omissions in the numerical chapter/section sequence indicate that no tool is required other than standard shop tools.

1. GENERAL

A. The letters listed below are used as prefixes to the part numbers on Boeing-designed tools:

- A - Tools designed for 767 airplanes
- B - Tools designed for 757 airplanes
- C - Tools for 737 airplanes
- F - Tools designed for 707/727/737-100/-200 airplanes
- G - Tools designed for 747 airplanes
- J - Tools designed for 777 airplanes
- K - Tools designed for 787 airplanes
- R - Tools procurable through Boeing only

B. Tools designed for Boeing Manufacturing

- AJ - Assembly Jig
- BOF - Boring Fixture
- CF - Checking Fixture
- DFT - Design Facility Tool
- DJ - Drill Jig
- FME - Floor-Mounted Mechanical Equipment
- LJ - Locating Jig
- ME - Mechanical Equipment
- MIT - Miscellaneous Tool
- OHME - Overhead Mechanical Equipment
- PME - Floor Position Unit (Portable)
- PRE - Protective Equipment
- SE - Special Equipment
- SME - Shipping Mechanical Equipment
- ST - Standard Tool
- TE - Test Equipment
- TME - Transportation Mechanical Equipment

INTRODUCTION



767

ILLUSTRATED TOOL AND EQUIPMENT MANUAL

TSJ - Test Jig

NOTE: As specified by ATA definition, the word "replace" means that the tool is still usable but the replacing tool is recommended for future procurement. The word "supersede" means that the superseded tool is not usable and it must be reworked or the tool which supersedes it must be used as the substitute tool.

- C. Boeing designed tools and equipment are categorized as airplane maintenance or component maintenance. Airplane maintenance tools are used by the mechanic working on the airplane and its systems; these tools are referenced in the Maintenance Manual. Component maintenance tools are used by the mechanic doing shop work on units removed from the airplane; these tools are referenced in the Component Maintenance Manual.
- D. Tool and equipment component parts that have been indicated as repairable/replaceable are considered recommended spare parts and are listed in a chart on the ITEM page. Tool fabrication drawings are provided to assist suppliers in tool manufacture.
- E. Tools and equipment exceeding 35 pounds are considered weight significant and weight is reported to the nearest pound. Dimensions less than 100 inches are reported in inches to the nearest inch. Dimensions more than 100 inches are reported in feet and inches to the nearest inch. The dimensions noted for each tool in the body of this document are generally the outside dimensions of the container in which the tool is stored, not the actual dimensions of the tool.

2. PUBLICATION CHANGE REQUESTS

Communications regarding this publication should be directed to Boeing Commercial Airplanes, Maintenance Publications Engineering; Attention: Supervisor, Repair Manuals. For uniform handling and direct routing of questions to the proper Boeing organization, use the Publications Change Request (PCR) Form. Boeing makes this form available to your publications organization.

3. TOOL CHANGE BULLETIN (TCB)

This Boeing form is used to provide airlines and vendors the most timely notice of significant changes or problems related to support equipment designed or recommended by the Boeing Company.

4. THREE ELEMENT NUMBERING SYSTEM

A three element numbering system is used in this manual. The first two numbers designate the ATA Specification 100 chapter. The second two numbers designate the section within that chapter. The fifth and sixth numbers designate a subject tool index in that chapter/section of the manual. The Chapter-Section-Subject numbers are displayed in the lower right-hand corner of each page. The page number and issue/revision date are listed directly to the right of the Chapter-Section-Subject indicator.

An illustration of the three element, numbering system is shown in Figure 1. Chapter 22, "Auto Flight" is designated by the first two digits. Section 20, "Speed - Attitude Correction" is designated by the second two digits. Subject 01 is the designator for the first tool in Chapter 22, Section 20. Each subject starts with page 1 and runs consecutively to the next subject which starts again with page 1.

5. NUMERICAL INDEX

The tool data in this manual can be found as shown in Figure 2. For data on the "Puller - Trunnion Pins, Nose Landing Gear", A32011-1, refer to the Numerical Index and locate the tool number. The index shows that the data on this tool is found in Chapter-Section-Subject 32-20-01, page 1. Turn to Subject 32-20-01, Page 1 for information on this tool.

6. BAE SYSTEMS TOOL DRAWINGS

BAE Systems has purchased the intellectual property (IP) of the Boeing Commercial Electronics group. The IP pertains to certain electrical / electronic airplane components, their associated drawings, and product support documents, such as Component Maintenance Manuals (CMMs). Specified in many of

INTRODUCTION



767

ILLUSTRATED TOOL AND EQUIPMENT MANUAL

these CMMs are Ground Support Equipment (GSE) that were designed by the Boeing Maintenance Ground Operations Systems (MGOS) group. The affected GSE drawings are also now the IP of BAE Systems. GSE that are affected by this transaction are identified in the body of this document.

For technical questions and customer support concerning the tools identified as BAE Systems IP in this document, please contact BAE Systems at :

cs-customer.service@baesystems.com

INTRODUCTION

D634T501

Page 3
Oct 10/2008



767

ILLUSTRATED TOOL AND EQUIPMENT MANUAL



767

ILLUSTRATED TOOL AND EQUIPMENT MANUAL

PART NUMBER: A22005-1, -9

NAME: BREAKOUT BOX - ATS LOADBOARD YAW DAMPER MONITOR RECEIVER, PCA

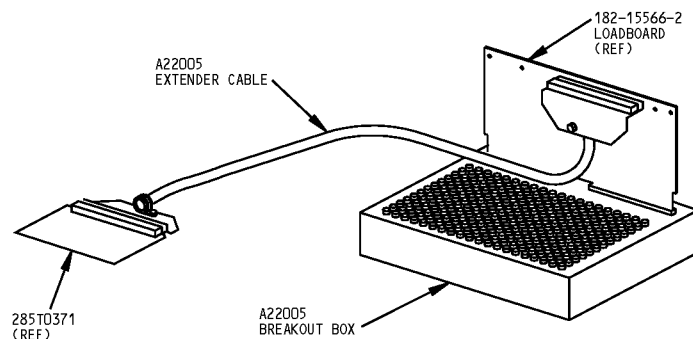
AIRPLANE MAINTENANCE: NO

COMPONENT MAINTENANCE: YES

USAGE & DESCRIPTION: This tool is used to test the Yaw Damper Monitor Receiver PCA. Refer to CMM 22-21-70 for further usage instructions. The -1 test box and -9 extender cable are used together for 767-200 and -300 airplanes only

WEIGHT: 5 lbs (2.3 kg)

DIMENSIONS: 3 x 14 x 17 inches (76 x 356 x 432 mm)



PCA ATS Loadboard Yaw Damper Monitor Receiver Breakout Box
Figure 1

D634T501

22-20-01

Page 1
Feb 16/2006

BOEING PROPRIETARY - Copyright/Unpublished Work - See title page for details

Tool Numbering Example
Figure 1

INTRODUCTION

D634T501

BOEING PROPRIETARY - Copyright © Unpublished Work - See title page for details

Page 4
Oct 10/2006

767 ILLUSTRATED TOOL AND EQUIPMENT MANUAL

767 ILLUSTRATED TOOL AND EQUIPMENT MANUAL		
Part No.	Title	Subject
A28010-1, -2	SPANNER WRENCH - FUEL SUMP DRAIN VALVE	28-10-12
A28011-48, -49, -50	TEST EQUIPMENT - PRESSURE/LEAKAGE, FUEL LINES AND FITTINGS	28-20-03
A28012-1	SPANNER WRENCH - FUEL SUMP DRAIN VALVE	28-10-14
A28013-10, -11	ADAPTER EQUIPMENT - AIR SUPPLY, SURGE TANK	28-10-16
A29001-1	HOIST ADAPTER - AIR-DRIVEN HYDRAULIC PUMP	29-00-01
A29002-6	LOCKING PIN - VALVE, HYDRAULIC RESERVOIR PRESSURIZATION SHUTOFF	29-00-02
A29003-49	TOOL SET - HYDRAULIC FILTER OVERHAUL	29-10-01
A29004-1	TOOL SET - HYDRAULIC FILTER MODULE OVERHAUL	29-10-02
A29005-1	SEALING CAP - PRESSURE TRANSMITTER MOUNT	29-30-01
A29006-19	TEST BOX - PRESSURE/THERMAL SWITCH	29-30-02
A30002-1	PLUG EQUIPMENT - THERMAL ANTI-ICING DUCT, WING PRESSURE SWITCH TEST	30-10-01
A30003-1	BREAKOUT BOX - VIEWPORT HEATER	30-40-03
A31003-33, -34	TEST BOX - WARNING ELECTRONICS UNIT (WEU) POWER SUPPLY	31-50-02
A31004-1	BREAKOUT BOX - WARNING ELECTRONICS UNIT POWER SUPPLY AND MONITOR	31-50-04
A31005-1, -14	TEST BOX - WEU POWER SUPPLY NOISE	31-50-01
A31006-7	SHORTING MODULE - MASTER WARNING PRINTED CIRCUIT ASSEMBLY	31-50-03
A31007-1, -30, -49, -59	ADAPTER CABLE - DIGITAL FLIGHT RECORDER SYSTEM TESTER	31-30-01
A31008-1	TEST CABLE - WEU POWER SUPPLY	31-00-01
A31010-1	BREAKOUT BOX - POWER SUPPLY UNIT, WEU	31-00-02
A32001-1	BRAKE DISCONNECT ASSEMBLY - FLIGHT DISPATCH	32-40-03
A32002-14	SPRING EXTENDER - DRAG STRUT, MAIN LANDING GEAR (MLG)	32-10-01
A32003-1	SPRING COMPRESSOR - SIDE STRUT, MAIN LANDING GEAR (MLG)	32-10-03
A32004-1, -4, -5	WRENCH ADAPTER - GLAND NUT, MAIN LANDING GEAR (MLG)	32-30-01
A32005-54	REPLACEMENT EQUIPMENT - SEAL, LOWER BEARING, MAIN LANDING GEAR (MLG)	32-10-05
A32006-75, -77	SLING EQUIPMENT - RETRACT ACTUATOR, MAIN LANDING GEAR (MLG)	32-10-06
A32007-17	PROTECTOR EQUIPMENT - AXLE AND AXLE THREAD, MAINLANDING GEAR (MLG)	32-10-07
A32008-51, -53	SLING EQUIPMENT - MAIN LANDING GEAR (MLG) COMPONENTS	32-10-11
A32010-1	PIN PULLER - RETRACT ACTUATOR, MAIN LANDING GEAR (MLG)	32-10-08
A32011-1	PULLER - TRUNNION PINS, NOSE LANDING GEAR	32-20-01
A32012-6, -9, -12, -13	WRENCH - WHEEL RETAINING NUT, MAIN LANDING GEAR (MLG)	32-10-09
A32013-1	PIN PULLER - UPPER DRAG BRACE, NOSE LANDING GEAR	32-20-02

NUMERICAL INDEX

D634T501

Page 7
Feb. 16/2006

BOEING PROPRIETARY - Copyright © Unpublished Work - See title page for details

767 ILLUSTRATED TOOL AND EQUIPMENT MANUAL

PART NUMBER: A32011-1

NAME: PULLER - TRUNNION PINS, NOSE LANDING GEAR

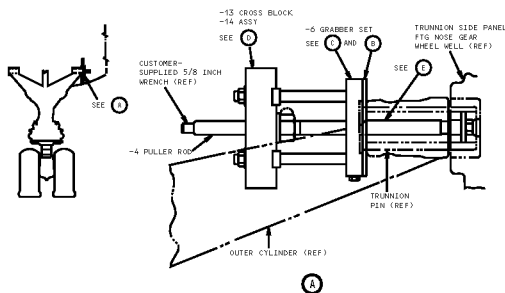
AIRPLANE MAINTENANCE: YES

COMPONENT MAINTENANCE: NO

USAGE & DESCRIPTION: The A32011-1 pin puller is used on all 767 airplanes. A32011 is used for removal or installation of the mounting pins in the nose landing gear shock strut assembly. A32011-1 consists of an A32011-2 puller assembly contained in a storage box.

WEIGHT: 24lbs. (11kgs)

DIMENSIONS: 8 x 10 x 24 inches (203 x 254 x 599 mm)



Nose Landing Gear Trunnion Pins Puller
Figure 1 (Sheet 1 of 3)

b634T501 32-20-01 Page 1
Oct 20/81

BOEING PROPRIETARY - Copyright © Unpublished Work - See title page for details

Tool Location Example Figure 2

INTRODUCTION

Page 5
Oct 10/2006

D634T501