

Front Panel Devices

Subrack Layout

The following figure shows a ADM-1 sub-rack configuration: in the next pages the front panel devices of each available unit are described.

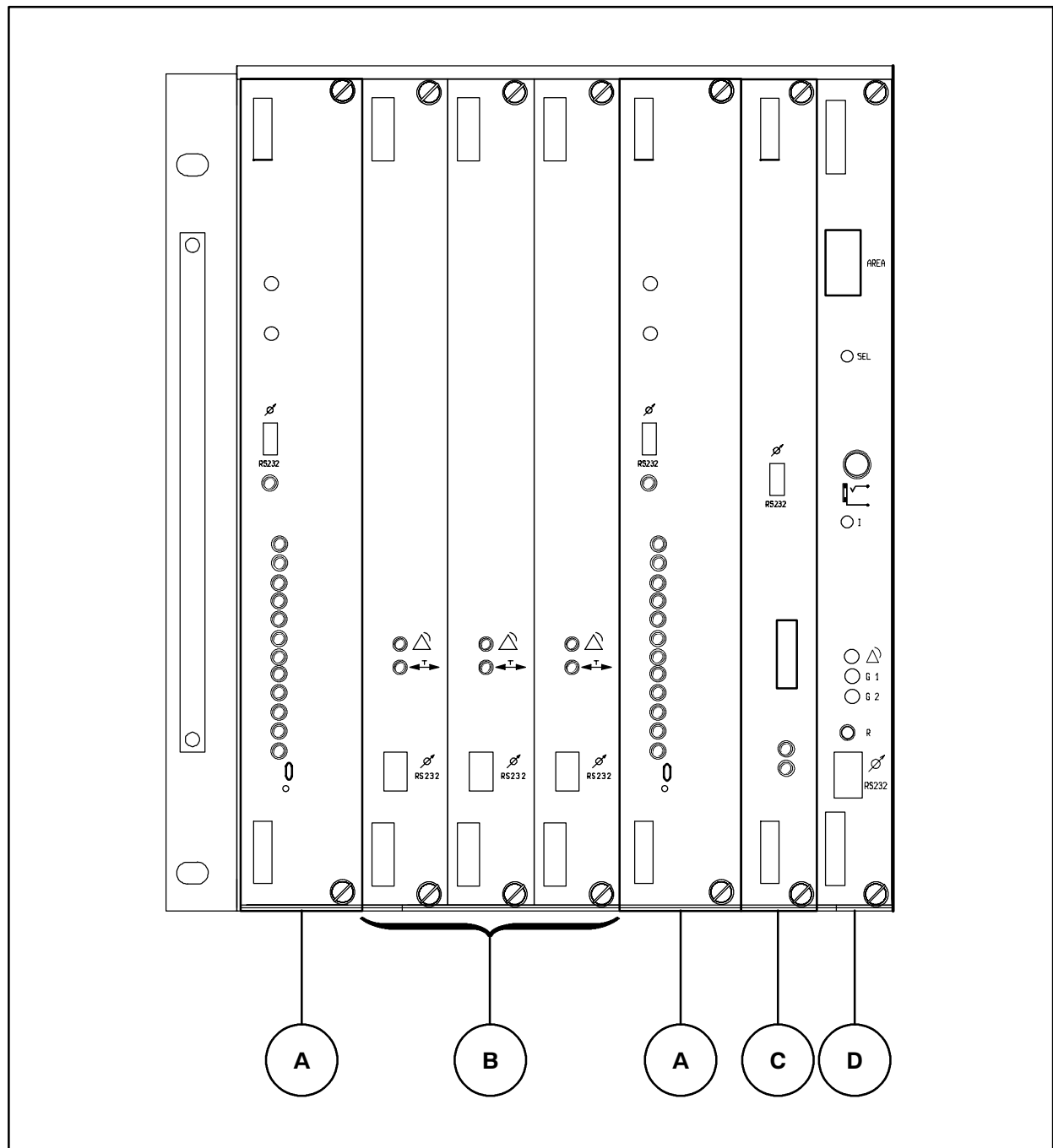


Fig. 3.2-1 *ADM-1 Subrack Layout*

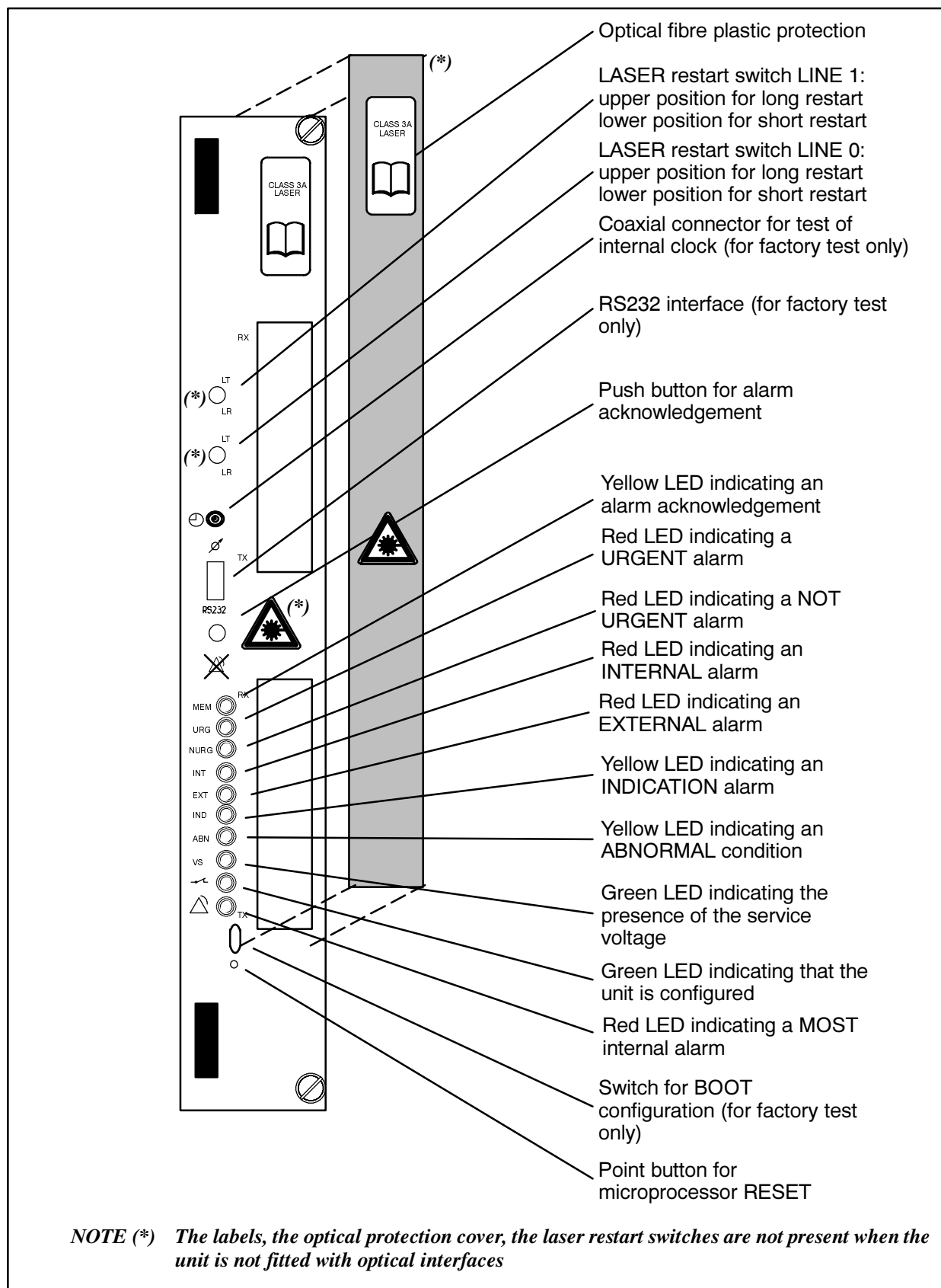
Unit Front Panels

The different units corresponding to the letters are listed below:

- (A) MOST Unit
- (B) The following units can be fitted in this slot:
 - *63x1.5/2Mbit/s G.703 Tributary Unit (slot 3 and slot 4 as protection)*
 - *32x1.5/2Mbit/s G.703 Tributary Unit (slot 3 as protection)*
 - *1x140Mbit/s / STM-1 (with VC-12 handling) G.703 Tributary Unit (slot 3,4,5)*
 - *STM-1 G.703 Electrical/Mux Unit (slot 3,4,5)*
 - *STM-1 Optical/Mux Unit (slot 3,4,5)*
 - *3x34Mbit/s Tributary Unit (slot 3,4,5)*
 - *3x45Mbit/s Tributary Unit (slot 3,4,5)*
- (C) Communication Unit
- (D) Auxiliary Unit

MOST Unit Type 2 MOST Unit Type 2S A

Code : 131-9141/01 131-9141/03



Tributary Unit B

Code : 131-xxxx/xx

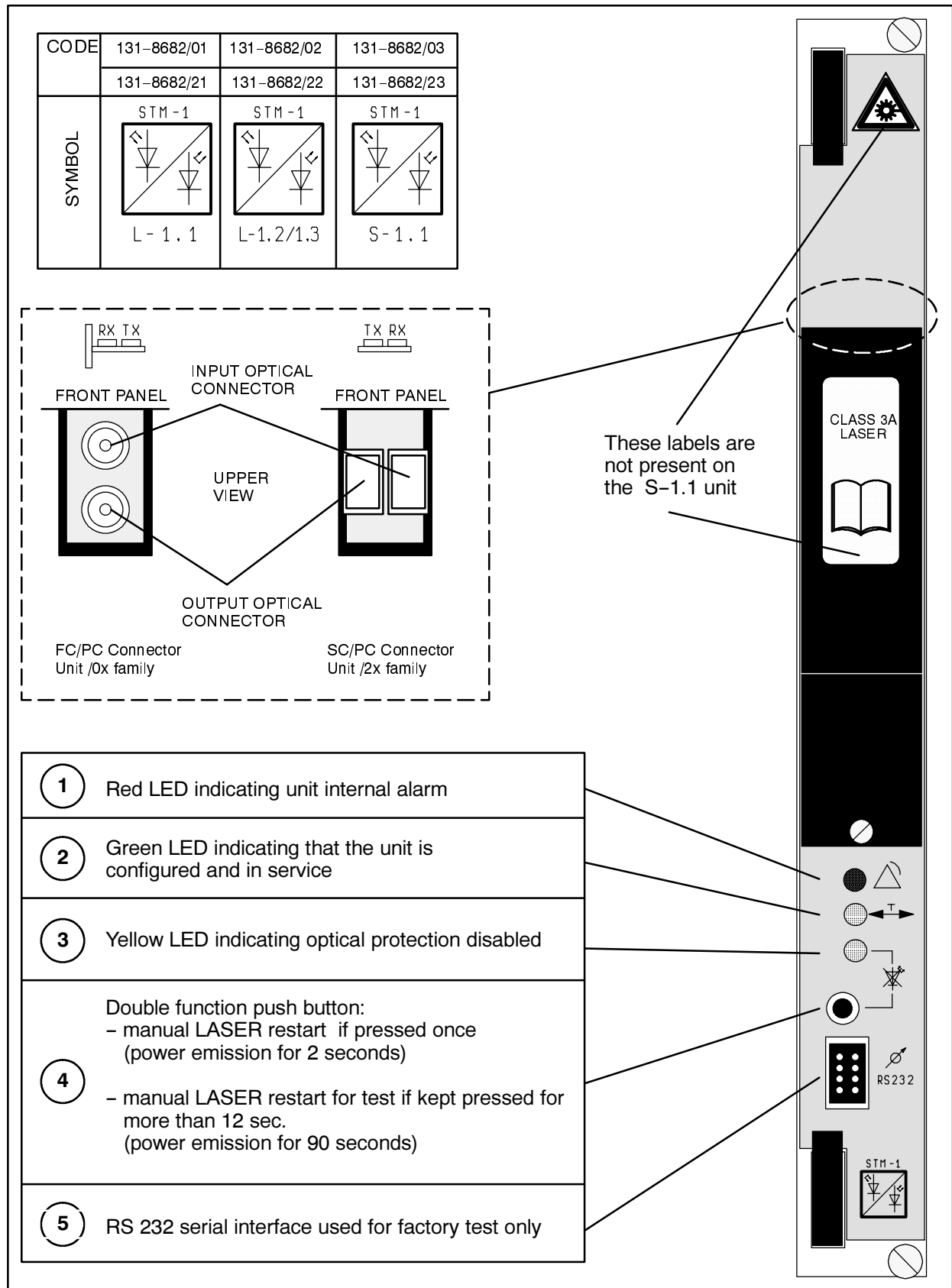
CODE	131-8977/01	131-8685/01	131-9251/01
SYMBOL	$63 \times 2/1.5$ 	3×34 	3×45
CODE	131-8977/02	131-8683/01	131-9310/11
SYMBOL	$32 \times 2/1.5$ 	STM - 1 	$140/STM-1$

- 1 Red LED indicating unit internal alarm
- 2 Green LED indicating that the unit is configured and in service
- 3 RS 232 serial interface used for factory test only




STM-1 Optical/Mux Unit B

Code : 131-8682/xx

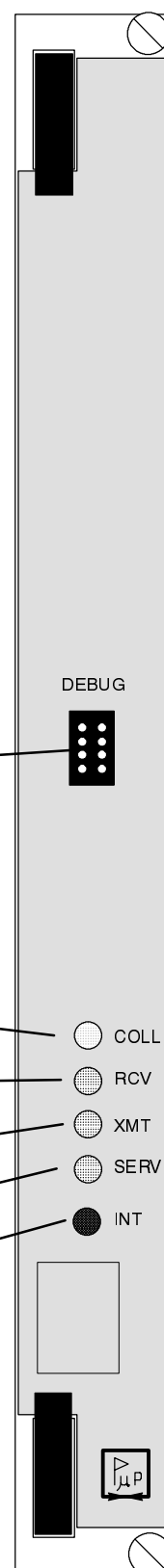


Communication Unit C

Code : 131-8924/01

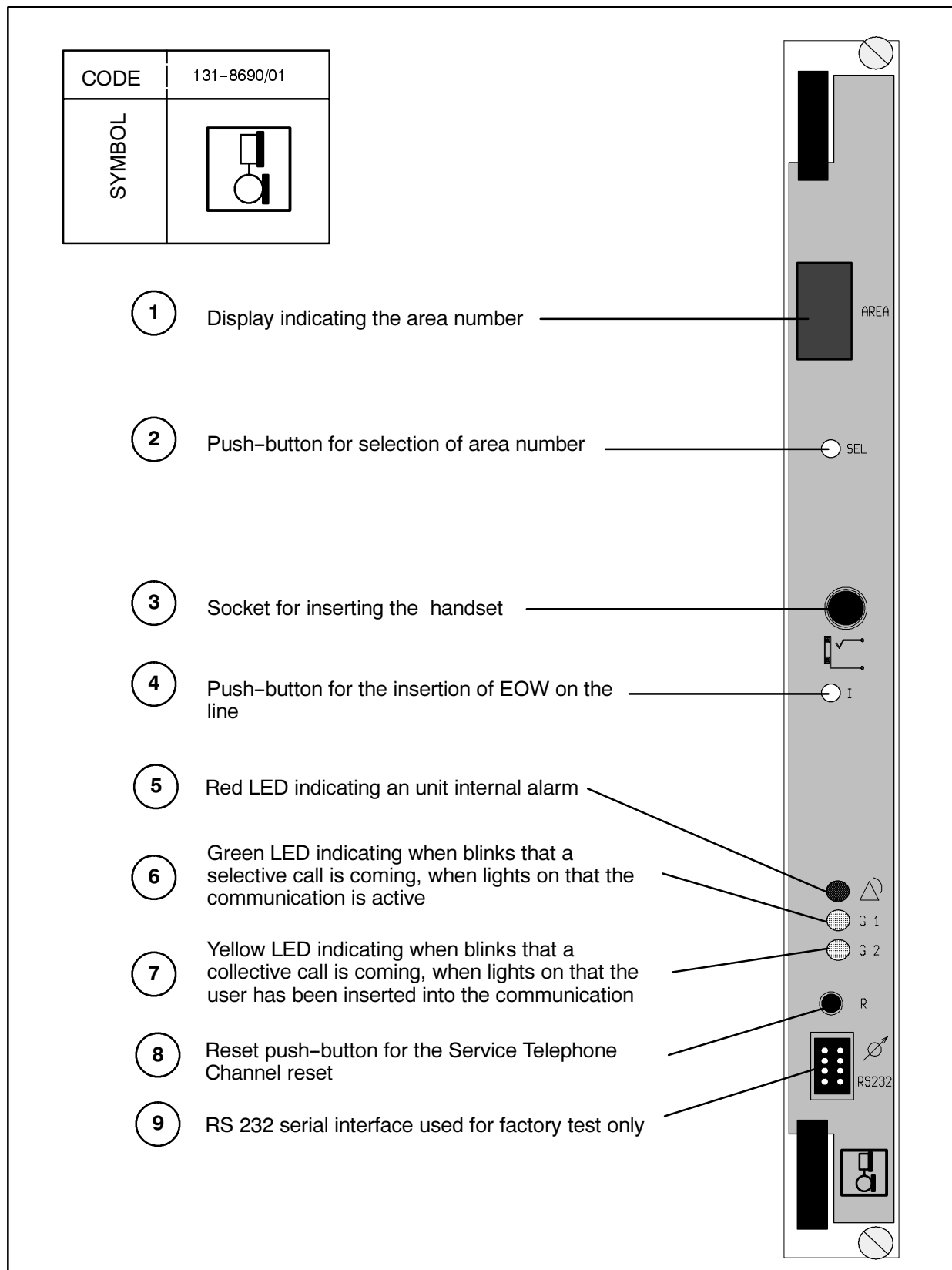
CODE	131-8924/01
SYMBOL	

- 1 RS232 serial connector for communications with the card microprocessor (used exclusively by the manufacturer)
- 2 Yellow LED indicating a collision on the Q interface
- 3 Green LED indicating reception on the Q interface
- 4 Green LED indicating transmission on the Q interface
- 5 Green LED indicating a configured unit
- 6 Red LED indicating an internal alarm



Auxiliary Unit D

Code : 131-8690/xx



PAGE INTENTIONALLY LEFT BLANK