

# Activating the Control Application

## Connection of Personal Computer to ADM-1

The PC's RS-232 serial port (COM1 or COM2) must be connected to the MOST Unit of the ADM-1 equipment via the RS-232 port on the Common part connection unit.

If the serial cable 336-1802/\*\* is not provided, make it using a 9 pin male connector on the ADM-1 side and a proper connector (25 or 9 pin female connector) on the PC side.

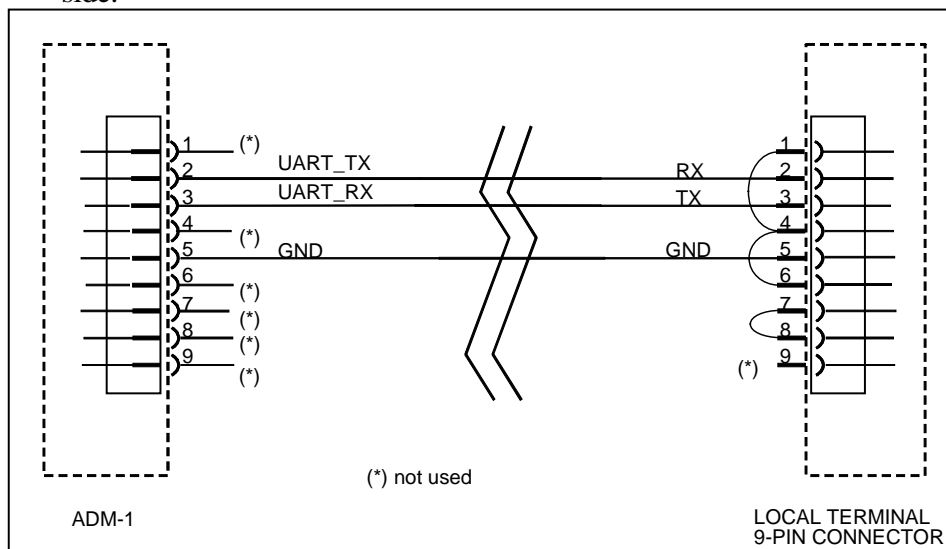


Fig. 1.3- 1 Cable that connects the RS232 ADM-1 Interface and a 9 Pin RS232 PC Interface.

### IMPORTANT

In order to disable the handshake protocol, the PC side connector pins listed below should be connected together:

9 Pin RS232 PC interface

Pin 7 -> Pin 8

Pin 1 -> Pin 4 -> Pin 6

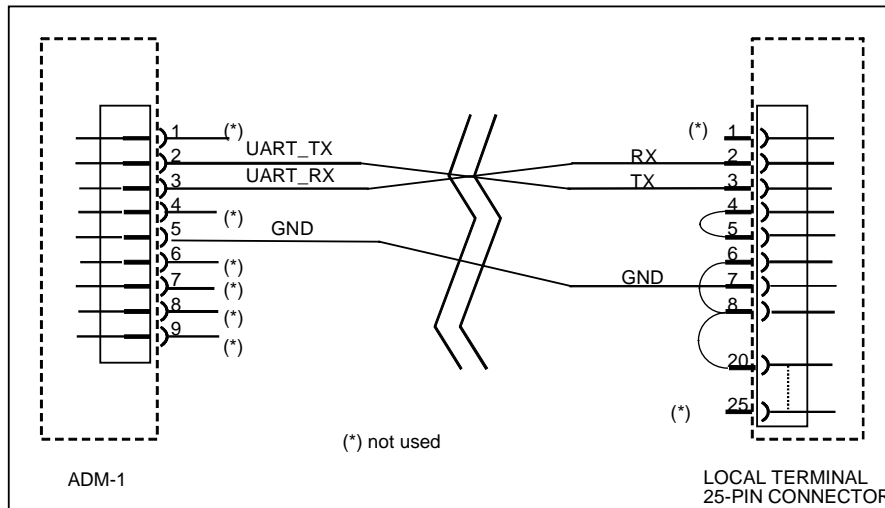


Fig. 1.3- 2 Cable that connects the RS232 ADM-1 Interface and a 25 Pin RS232 PC Interface.

### IMPORTANT

In order to disable the handshake protocol, the PC side connector pins listed below should be connected together:

25 Pin RS232 PC interface

Pin 4 -> Pin 5

Pin 6 -> Pin 8 -> Pin 20

**To connect the Personal Computer ports to the proceed as follows.**

1. Check that the Personal Computer is not powered then insert the cable connector into the PC RS232 interface.
2. Insert the other cable connector into the ADM-1 RS232 interface.

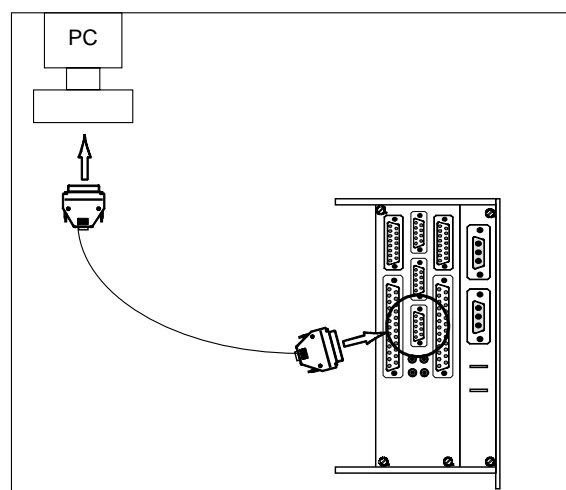


Fig. 1.3- 3 Connecting the PC to the ADM-1.

The Personal Computer is now connected to the ADM-1 and the operator can turn it on for starting with software installation.

# Software Installation

## Installing the Local Operator

Before starting with the software installation be sure that the DOS Operating System has been correctly installed together with the Microsoft Windows program (or check the correct installation of Windows 95 Operating System) (for more information see also the relevant handbooks).

### Hardware and Software Requirements

- ◆ Floppy disk containing the local operator software kit.
- ◆ Personal Computer running MS-DOS/Windows 3.11, Windows 95 or Windows NT V4.0 operating system with a 3.5" floppy disk drive.

### Installing the Local Controller Application on Windows 3.11 Platform

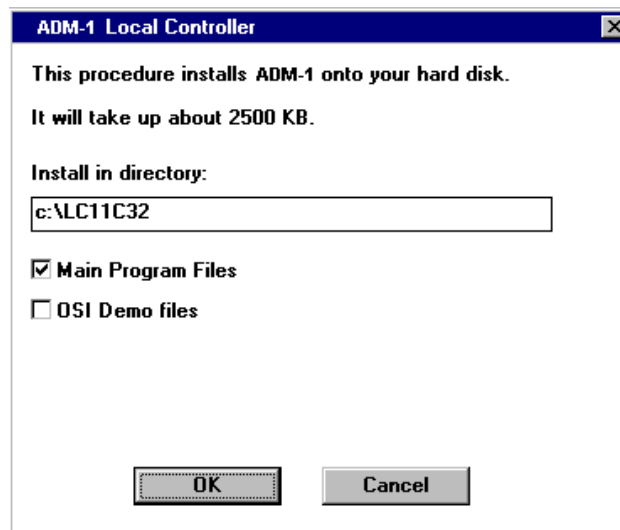
Start the Windows environment, by means of the following command:

**C:\win**

and proceed as follows:

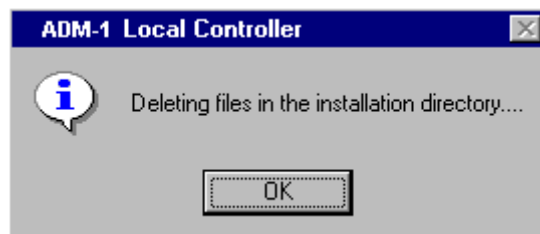
- 1.** Open the **Applications** window.
- 2.** Run the **File Manager** program.
- 3.** Select the disk drive.
- 4.** Run **S454xyy.exe** self-extracting file which will expand the installation files in a temporary directory (default **C:\install**).
- 5.** Select the **C:\Install** directory (or the folder containing the installation files).

6. Run the **Install.exe** program; the following window will be displayed:



----- The directory where the Local Controller files will be installed can be renamed according to the limitations of the used operating system (in particular, in Windows 3.11 environment, folder names can not be longer than 8 characters). For basic installation of Local Operator program, the operator can not deselect the "**Main Program File**" option. The "**OSI Demo Files**" option can be selected, in order to load the demonstration files which can be used to configure routing parameters.

7. Press the **OK** button and wait for the end of the process of file transfer from the source directory to the destination one. The following window will be displayed:



8. By pressing the **OK** button the DOS batch file will run and the files temporary copied in the **C:\install** directory will be deleted (if a different name has been assigned to the temporary directory where expanding the compressed files, the operator must remove the files by himself). The Window environment is temporary frozen while executing the deletion procedure.
9. Click on the **OK** button in the window that is displayed when the installation is successfully completed.

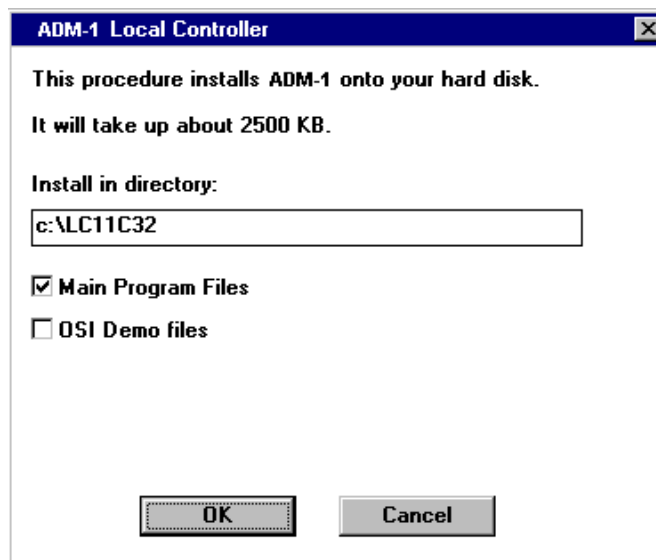
10. In order to start the Local Controller application double click on "**LCADM-1 x.y.z**" icon, in the "**LC ADM-1**" program group. The name of the program group and the indication on the icon can be changed from the Window environment.

### Installing the Local Controller Application on Windows 95/Windows NT Platforms

Start the **Windows Explorer** program, from the Windows task bar.

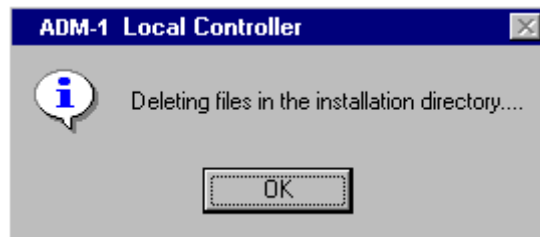
Then proceed as follows:

1. Insert the floppy disk containing the software kit into the disk drive.
2. Select the disk drive in the Windows Explorer window.
3. Run **S454xxyy.exe** self-extracting file which will expand the installation files in a temporary directory (default **C:\install**).
4. Start the installation procedure from the temporary directory (default **C:\install**), by running the **Install.exe** program; this window will be displayed:



----- The directory where the Local Controller files will be installed can be renamed according to the limitations of the used operating system, in terms of characters number. For basic installation of Local Operator program, the operator can not deselect the "**Main Program File**" option. The "**OSI Demo Files**" option can be selected, in order to load the demonstration files which can be used to configure routing parameters.

5. Press the **OK** button and wait for the end of the. The following window will be displayed:



6. Delete the installation files in the **C:\install** directory, clicking on the **OK** button in the message window (if a different name for the temporary directory where expanding the compressed files has been assigned, the operator must remove the files by himself).
7. By pressing the **OK** button a DOS batch file will be executed in a DOS window shell. In the standard configuration of the Windows environment, the DOS window, will not be closed automatically when the operation is over. The operator must close the shell window manually, when the "Finished-expand" message, indicating the end of the cleaning process, will be displayed in the MS-DOS window title bar.
8. Erase the **Install.exe** program from the **C:\install** directory to obtain more free space on your hard disk.
9. If the installation procedure is successfully completed, the following window will be displayed:



10. Click on the **OK** button.
  11. In order to start the Local Controller application choose the "**Start->Programs->LCADM-1->LC ADM-1 x.y.z**" menu. The name of the program group and the indication on the icon can be changed from the Window environment.
- This procedure copies on your hard disk neither the configuration file for updating equipment software from the Local Operator (**download.ini** file), nor the online help files, which are distributed in separate software kit.

## Installing the Online Help files

### Hardware and Software Requirements

- ◆ Floppy disk containing the online help software kit.
- ◆ Personal Computer running MS-DOS/Windows 3.11, Windows 95 or Windows NT V4.0 operating system with a 3.5" floppy disk drive.

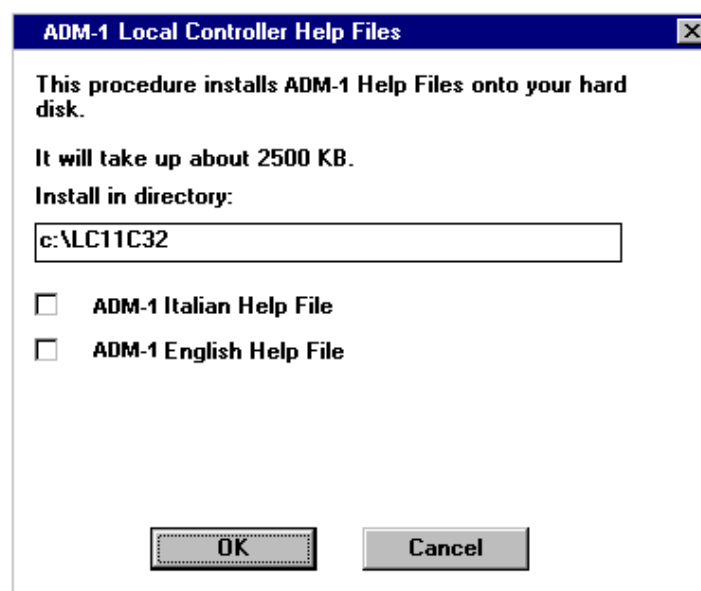
### Installing the Online Help Files on Windows 3.11 Platform

Start the Windows environment, by means of the following command:

**C:\win**

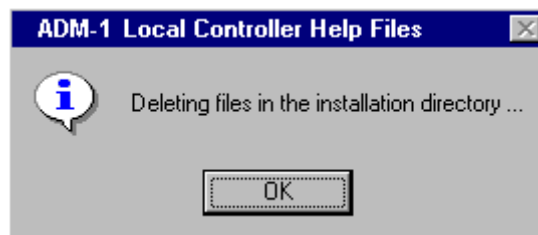
and proceed as follows:

1. Open the **Applications** window.
2. Run the **File Manager** program.
3. Select the disk drive.
4. Run **H11Cxyy.exe** self-extracting file which will expand the installation files in a temporary directory (default **C:\install\help**).
5. Select the **C:\install\help** directory (or the folder containing the installation files).
6. Run the **Install.exe** program; the following will be displayed:

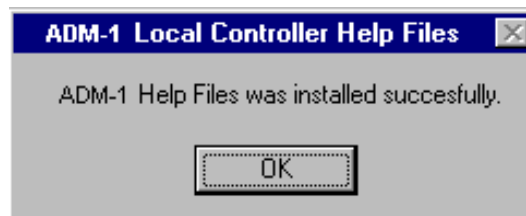


----- The directory where the help files will be installed can be renamed according to the limitations of the used operating system, in terms of characters number.

7. Select the "**ADM-1 italian help files**" option to install the italian version, the "**ADM-1 english help files**" option otherwise, both if you want to install the english and the italian versions of help files.
8. Press the **OK** button and wait for the end of the. The following window will be displayed:



9. By pressing the **OK** button the DOS batch file will run and the files temporary copied in the **C:\install\help** directory will be deleted (if a different name has been assigned to the temporary directory where expanding the compressed files, the operator must remove the files by himself).  
The Window environment is temporary frozen while executing the deletion procedure.
10. If the installation procedure was successfully completed, the following window will be displayed:



11. Click on the **OK** button.

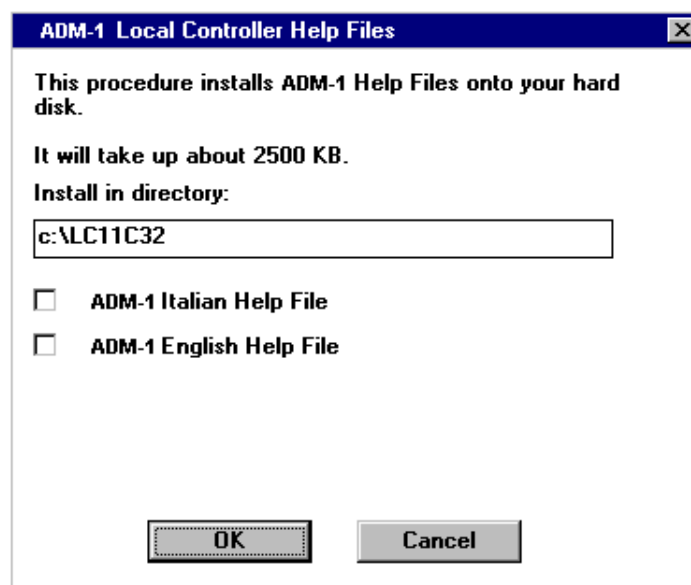


## Installing the Online Help Files on Windows 95/Windows NT Platforms

Start the **Windows Explorer** program, from the Windows task bar.

Then proceed as follows:

1. Insert the floppy disk containing the online help software kit into the disk drive.
2. Select the disk drive in the Windows Explorer window.
3. Run **H11Cxyy.exe** self-extracting file which will expand the installation files in a temporary directory (default **c:\install\help**).
4. Start the installation procedure from the temporary directory (default **C:\install**), by running the **Install.exe** program; this window will be displayed:

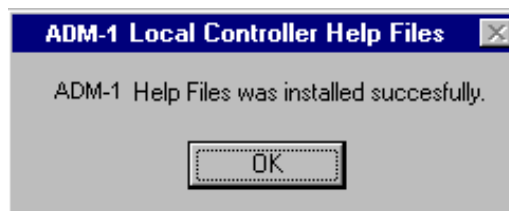


----- The directory where the help files will be installed can be renamed according to the limitations of the used operating system, in terms of characters number, but taking care to specify the same path as for the installation of the Local Operator program which the help files refer to (**LC11Cxyy** by default).

9. Select the "**ADM-1 italian help files**" option for italian version of help files, "**ADM-1 english help files**" option otherwise, both if you want to install the english and the italian version of the help files.
10. Press the **OK** button and wait for the end of the process of file transfer from the source directory to the destination one. The following window will be displayed:



11. Delete the installation files in the **C:\install\help** directory, clicking on the **OK** button in the message window (if a different name for the temporary directory where expanding the compressed files has been assigned, the operator must remove the files by himself).
12. By pressing the **OK** button a DOS batch file will be executed in a DOS window shell. In the standard configuration of the Windows environment, the DOS window, will not be closed automatically when the operation is over. The operator must close the shell window manually, when the "Finished-expand" message, indicating the end of the cleaning process, will be displayed in the MS-DOS window title bar.
13. Erase the **Install.exe** program from the **C:\install\help** directory to obtain more free space on your hard disk.
14. If the installation procedure is successfully completed, the following window will be displayed:



13. Click on the **OK** button.

## Installing the Configuration File "download.ini"

To upgrade the software of ADM-1 equipment using the Local Controller application you must copy both the "**download.ini**" file (K38-0375/xx.yy) and the files to be downloaded (one for each different unit type), in the same directory where Local Operator application has been installed (**LC11Cxxyy** by default).

## Access the Control Application Software

To access the Control Application software from MS-DOS operating system:

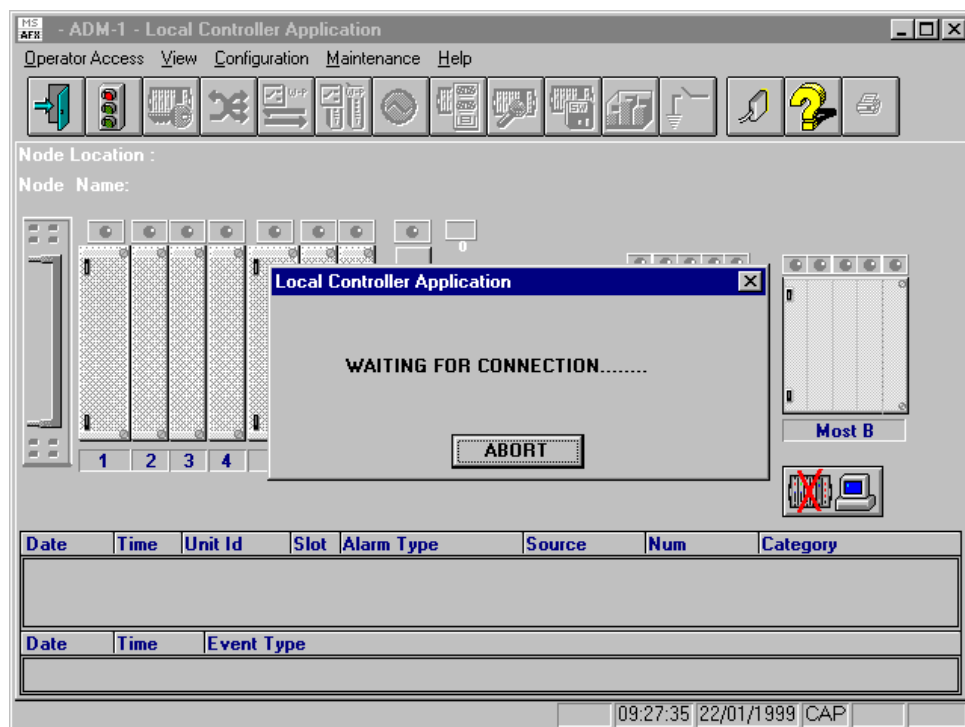
1. Enter the command **WIN**<return>
2. Double click on **LC** icon.

To access the Control Application software from the WINDOWS desktop:

1. Open the **LC** program group
2. Double-click on the **LC** icon with the mouse or pressing the <enter> key on the keyboard.

If there is a port mismatch between the personal computer and the Control Application Software, the connection to the equipment is not possible.

After access the Local Controller the main window is displayed.



In this case it is necessary to configure the proper port parameter.

### **NOTICE**

The equipment shelf is not displayed on the main window when the first log in connection is performed. The layout will be displayed once the NE Type is defined by the operator.

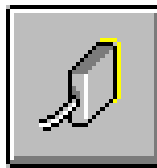
## Configuration of Communication Parameters

The following paragraph describes the operation necessary to configure all the communication parameters necessary to ADM-1.

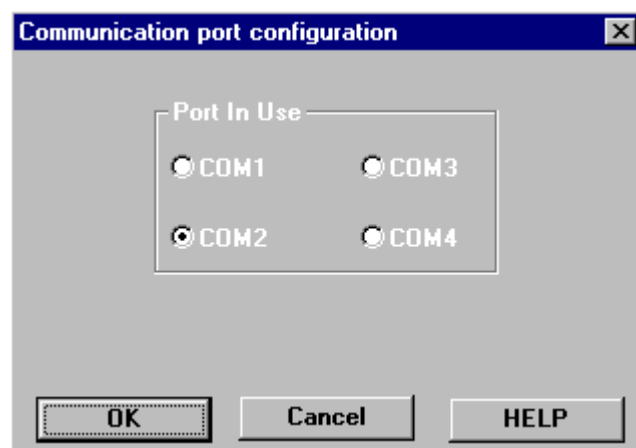
This operation has to be performed before connecting to the equipment.

### **To configure the connection parameters:**

1. Click on the **Serial Port** button, in the main window.



The **Communication port configuration** window becomes accessible.



2. Select the serial port used for the connection of Control Application, by checking the relevant **COM** radio button.
3. Press **OK**.

When the port connection parameters are properly set, the software automatically will show the **NE access** window.

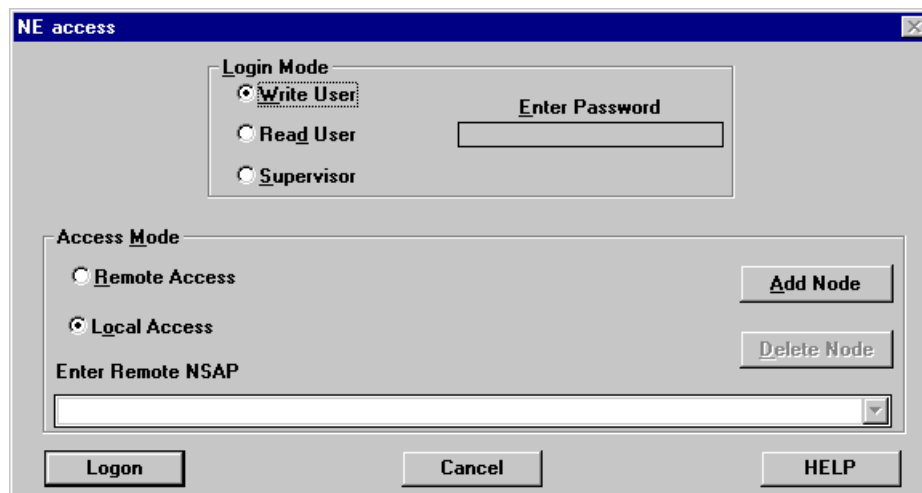
Proceed as follows.

## Login Access

### (Operator Access -> NE access)

This function is used to access an ADM-1 connected to the Control Application, by means of F interface or DCC channels.

By selecting this item or by clicking on the traffic-light icon, the **NE access** window becomes accessible.



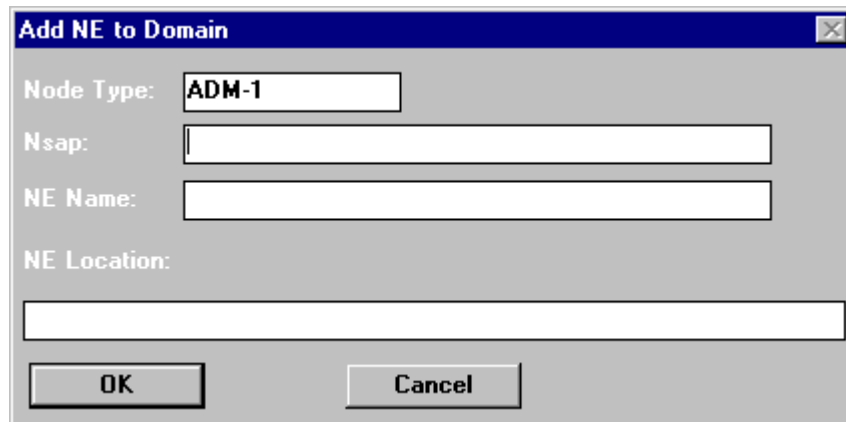
To open a connection with the ADM-1, proceed as follows:

1. Select the connection type, **Local Access** to local equipment (through the F interface) or **Remote Access** to remote equipment (using the DCC or LAN), by checking the relevant **Access Mode** radio button.  
For the remote login select also the equipment to reach.
2. Select the access rights, by checking the relevant **Login Mode** radio button.
3. For **Write User** and **Supervisor** it is also necessary to specify the password to access the equipment (for Write User SDHNE is the default, while the default for supervisor is S\_SDHNE).
4. Press **Logon** button or press <enter> on the keyboard. The main window will be displayed.

To add a new reachable node, proceed as follows:

1. Click on the **Add Node** button.

The **Add NE to Domain** window will be displayed.

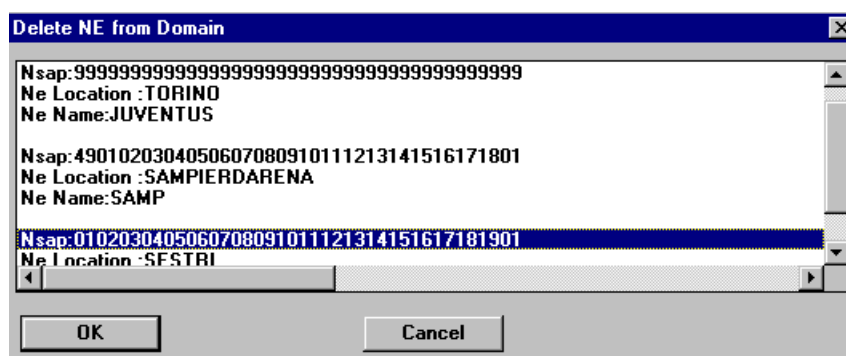


2. Enter the relevant **NSAP** address (40 hexadecimal characters from 0 to F).
3. Enter the **NE Name** (max. 32 characters) to identify the Network Element.
4. Enter the **NE Location** (max. 100 characters, but only 50 can be displayed at a time) to identify the physical location of the Network Element.
5. Confirm the settings by click on the **OK** button.

To remove a node from the list, proceed as follows:

1. Click on the **Delete Node** button.

The **Delete NE from Domain** window becomes accessible.

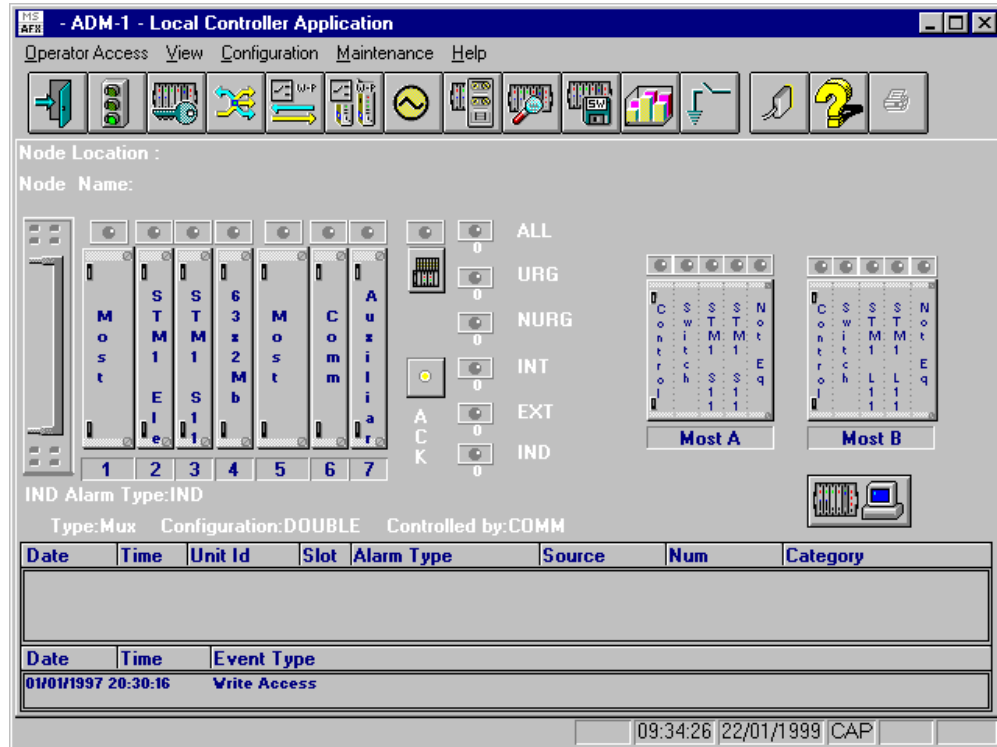


2. Select in the list the node to be removed.
3. Press the **OK** button.

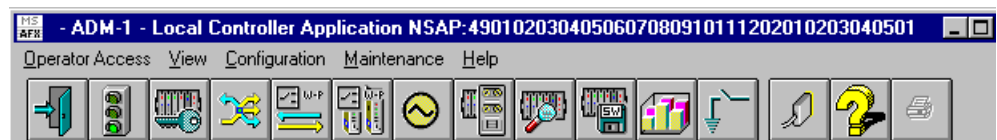
**Exit, Login Access, Password Management**

## Main Window

After the login access the main window is displayed.



In case the login is performed as remote access, on the main window top bar the NSAP address of the connected equipment will be displayed.

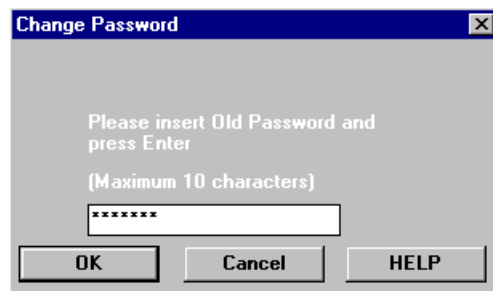


# Password Management

## (Operator Access -> Password)

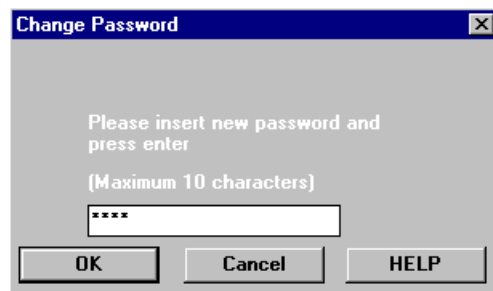
This function is accessible for operators with *read/write* or *supervisor* rights, and allows the modification of the equipment password.

When log as write user, by selecting this item, the **Change Password** window becomes accessible.

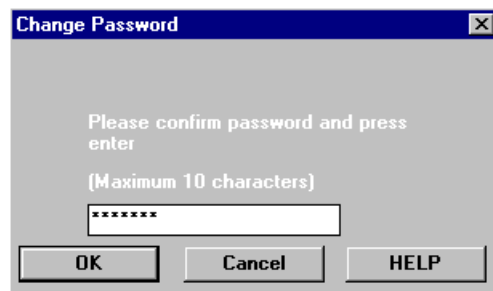


To modify the write user password, proceed as follows:

1. Insert the old equipment password and click on the **OK** button.



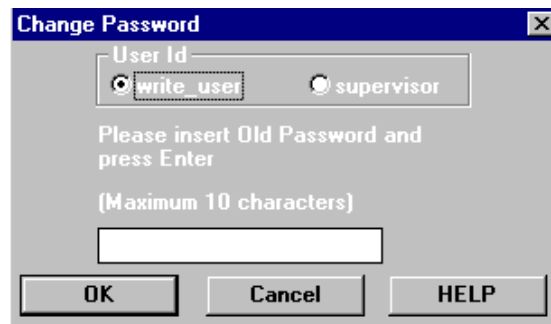
2. Insert the new password (max. 10 characters) and click on the **OK** button.





3. Re-enter the new password and confirm the operation by clicking on the **OK** button.

When log as supervisor, by selecting the **Password** item, the **Change Password** window becomes accessible.



**To modify the write user or supervisor password, proceed as follows:**

1. Select either **write user** or **supervisor** radio button for changing the password of the desired user.
2. Proceed as described for the **To modify the write user password** steps.

*See Also:*

**Login Access**

## Log out

### **(Operator Access -> Logout)**

This function is used to go out from the user access but still maintaining the LC application window.

*See Also:*

**Login Access**

## Exit

### **(Operator Access -> Exit ...)**

By clicking on the **Exit** item in the **Operator Access** menu, the Control Application software is closed.

*See Also:*

**Login Access**

PAGE INTENTIONALLY LEFT BLANK