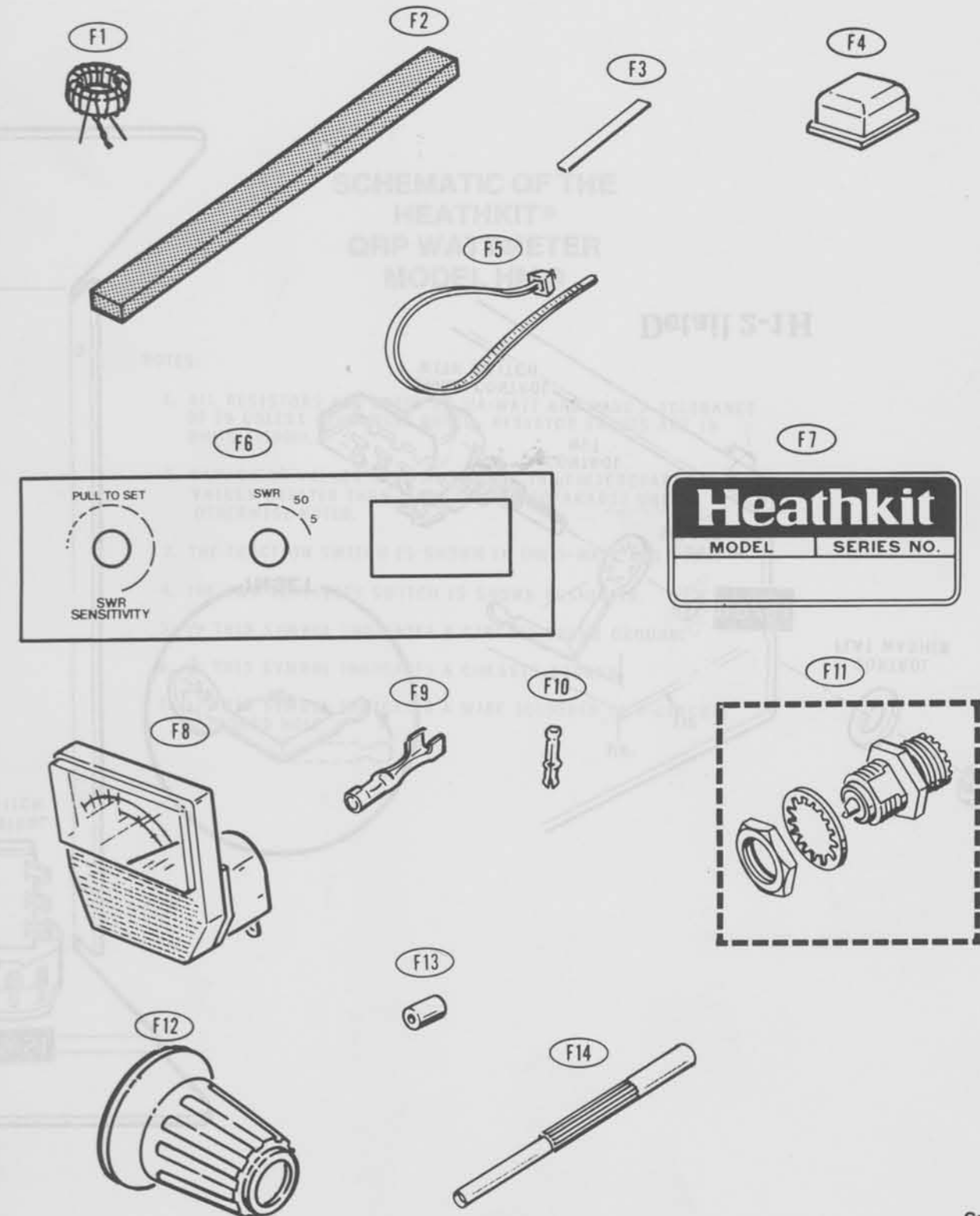
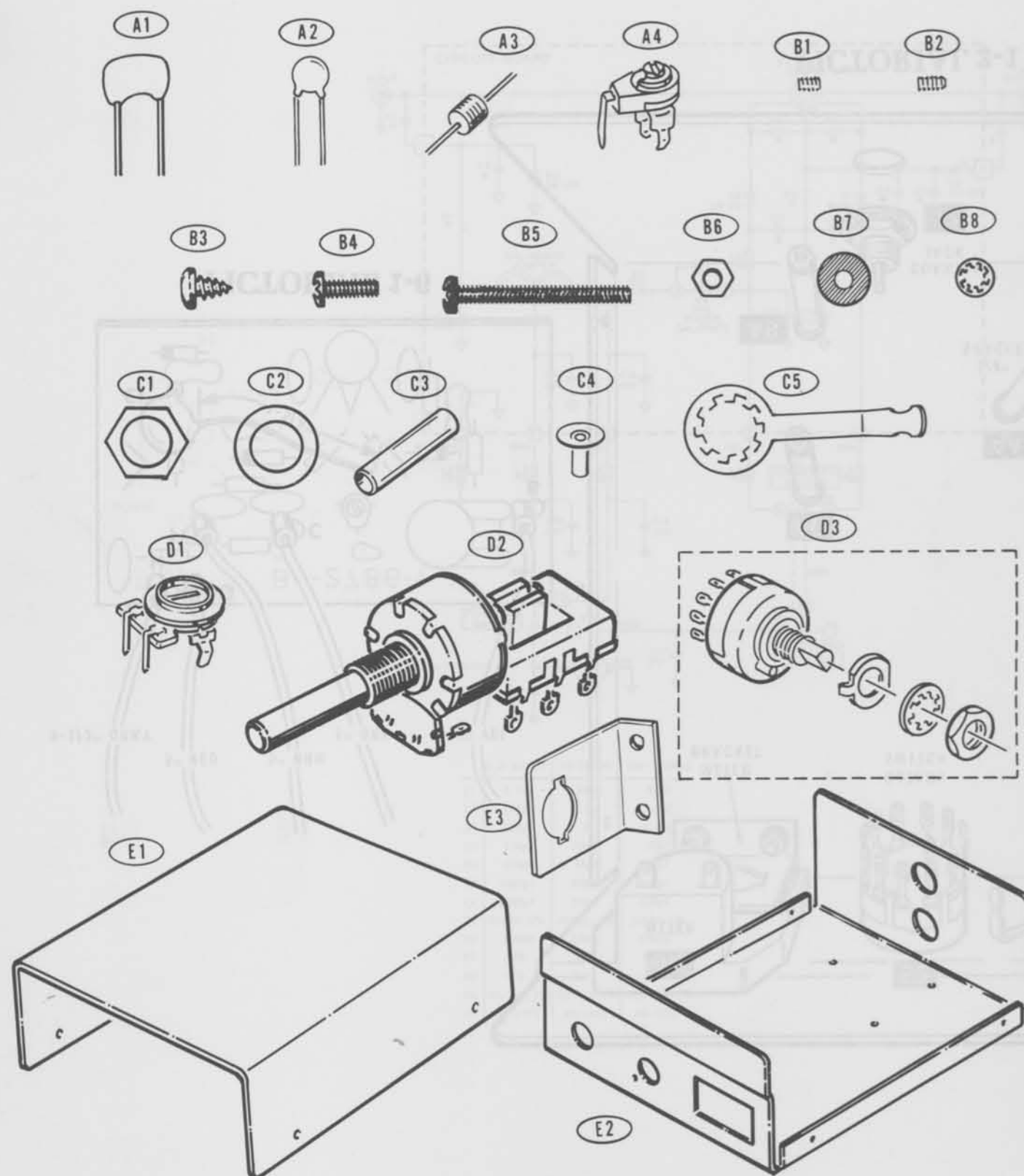


ILLUSTRATION BOOKLET

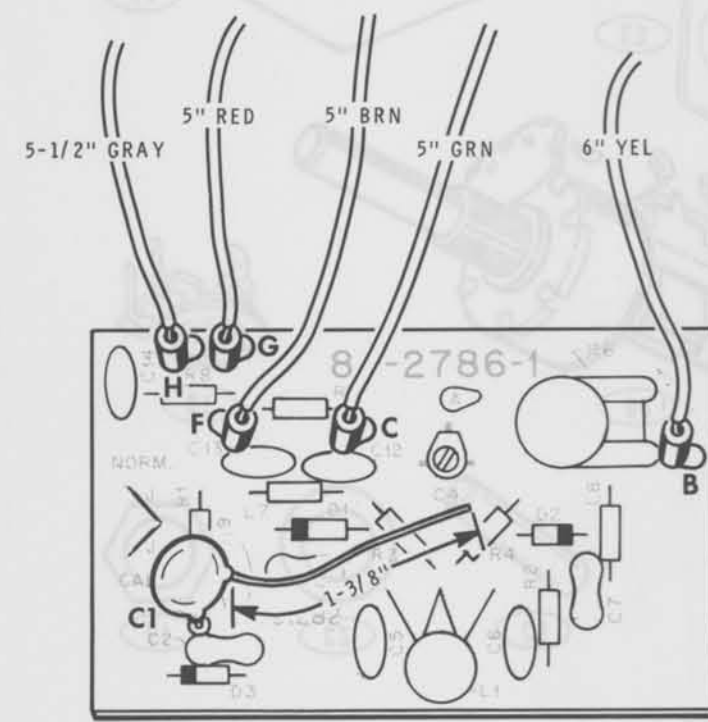
Part of 595-2979

PARTS PICTORIAL

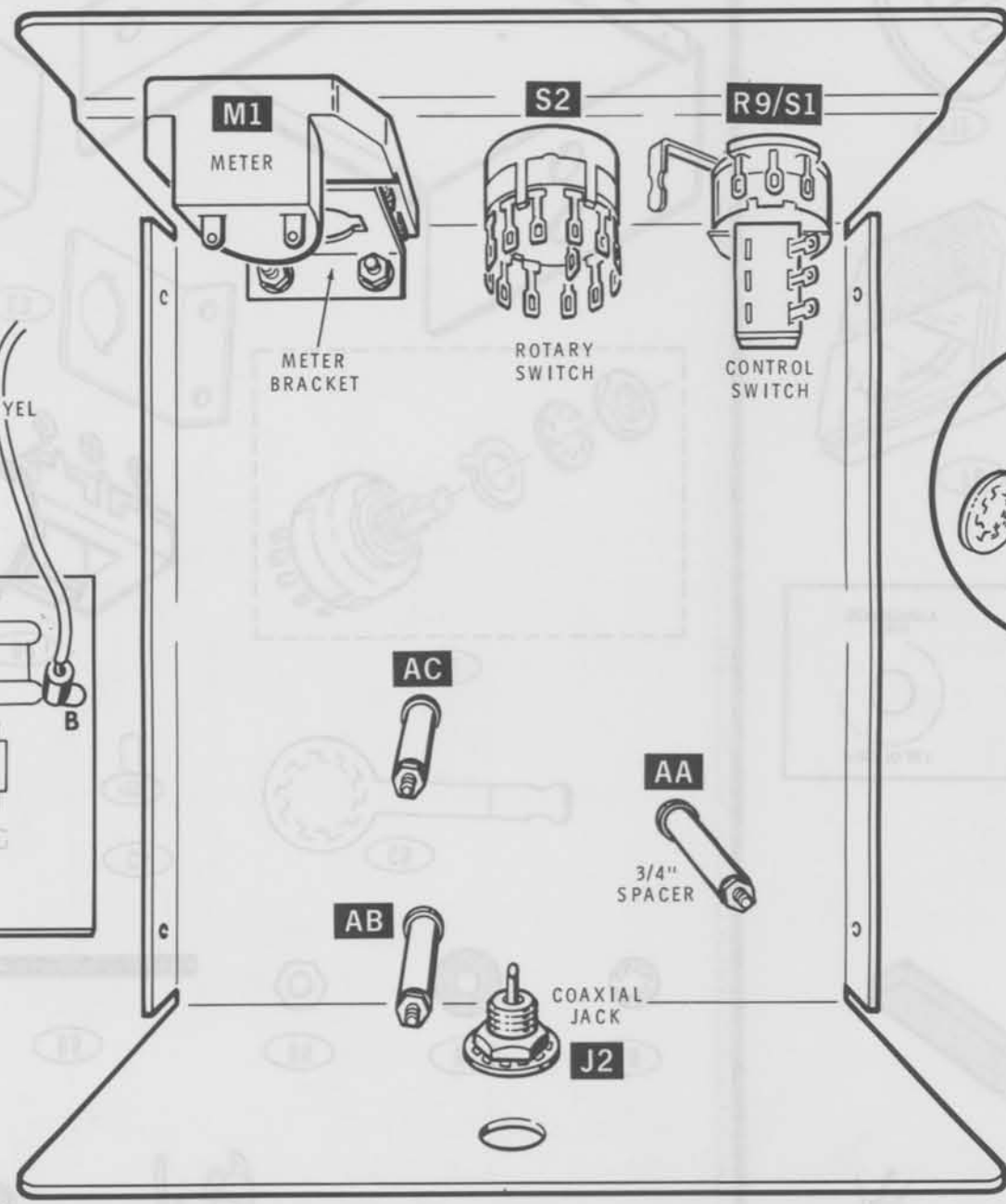


Model HM-9

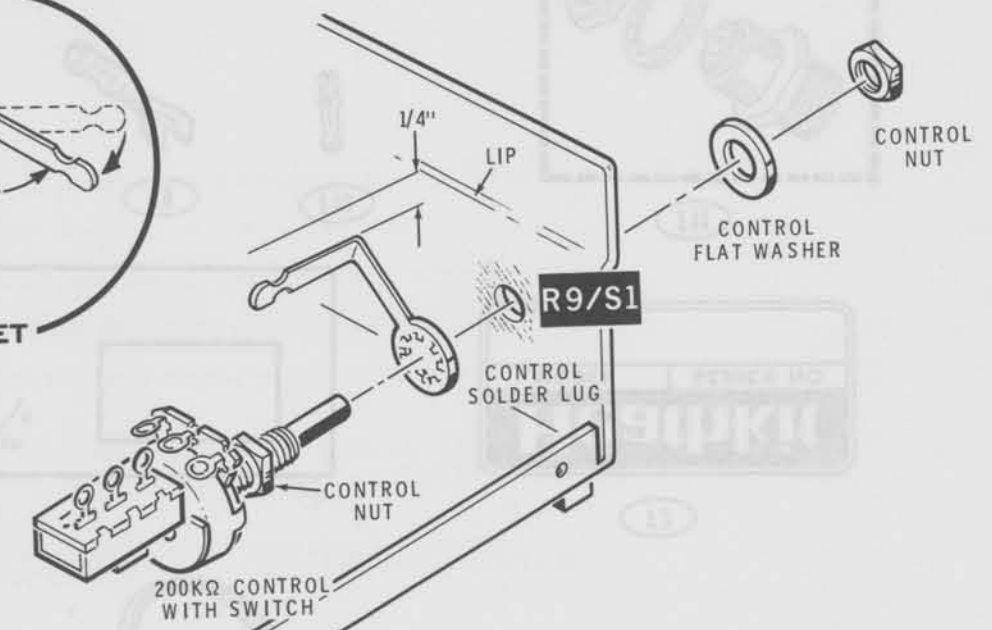
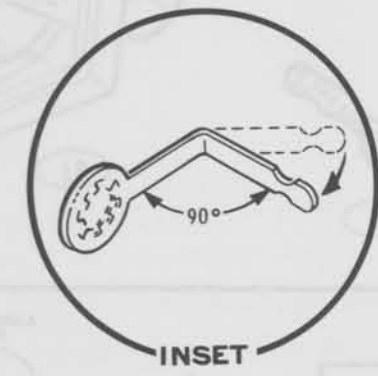
Copyright © 1983
Heath Company
All Rights Reserved
Printed in the United States of America



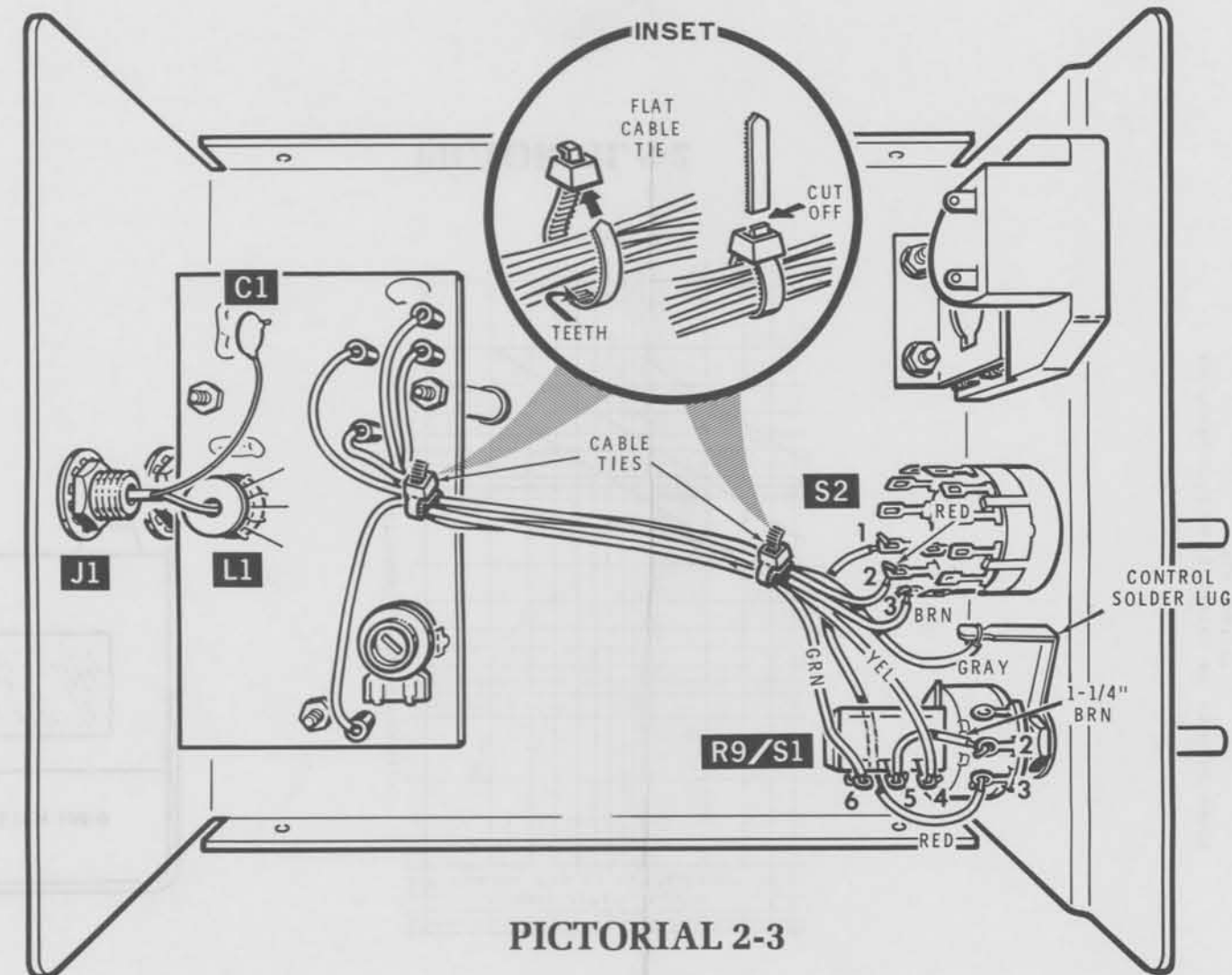
PICTORIAL 1-6



PICTORIAL 2-1

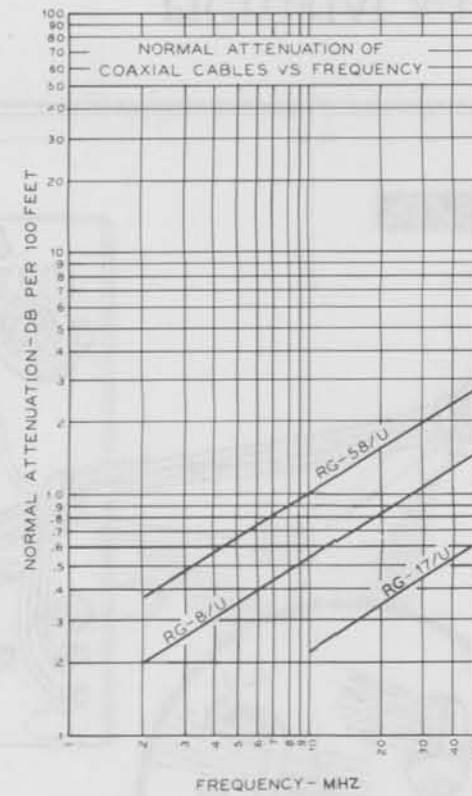


Detail 2-1H

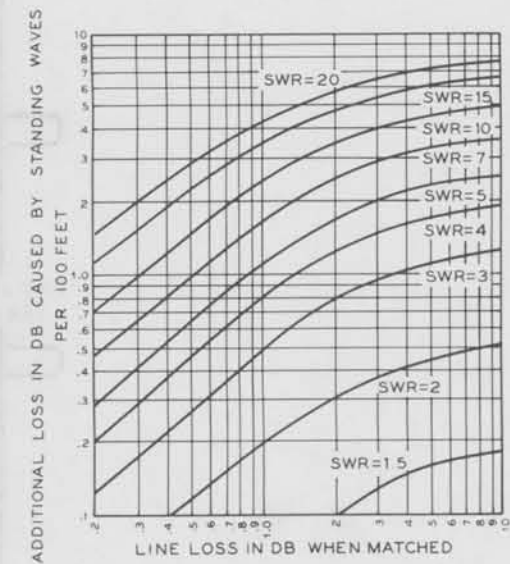




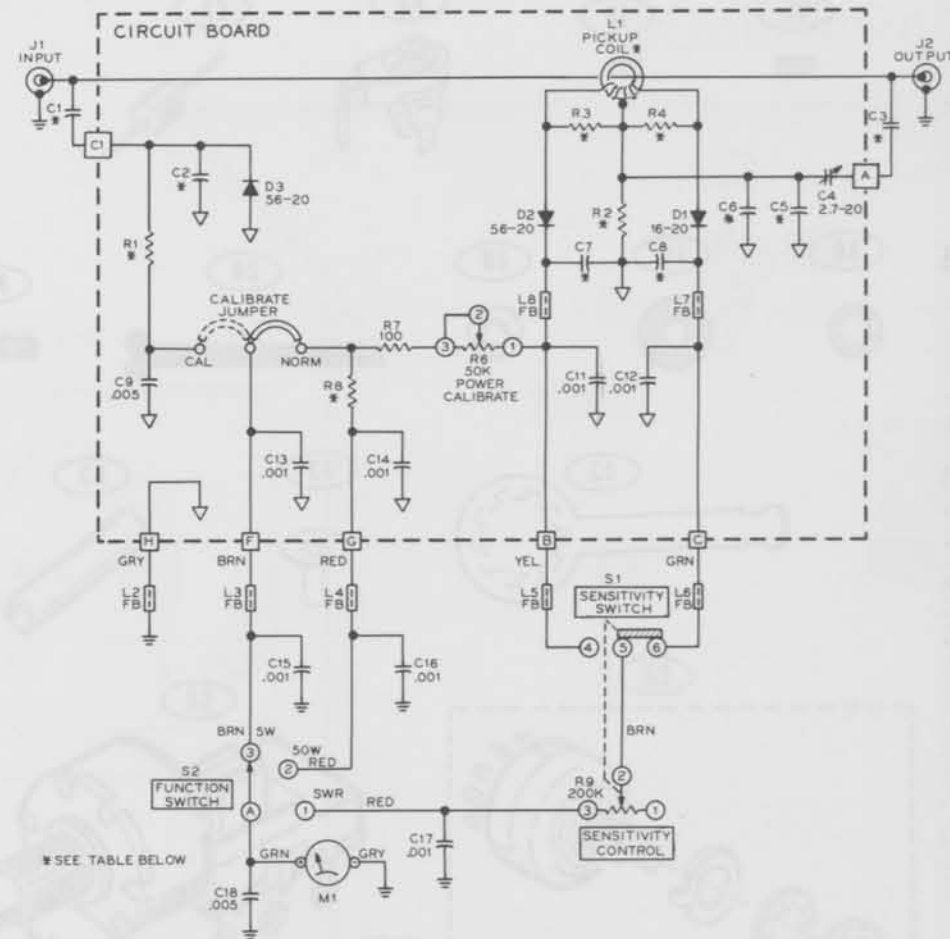
PICTORIAL 5-1



PICTORIAL 5-2



PICTORIAL 5-3



	1.8-30 MHz	50-54 MHz	144-148 MHz
C1	7.7pF	.56pF	.56pF
C2	100pF	7.5pF	7.5pF
C3	100pF	7.7pF	7.7pF
C5	150pF	30pF	30pF
C6	150pF	30pF	30pF
C7	1000pF	100pF	100pF
C8	1000pF	100pF	100pF
R1	6340Ω, 1%	4990Ω, 1%	5490Ω, 1%
R2	3300Ω	2200Ω	2200Ω
R3	47Ω	56Ω	56Ω
R4	47Ω	56Ω	56Ω
R8	45.3kΩ, 1%	28.7kΩ, 1%	30.9kΩ, 1%
L1	40-1970	40-1982	40-1982

SCHEMATIC OF THE HEATHKIT® QRP WATTMETER MODEL HM-9

NOTES:

1. ALL RESISTORS ARE RATED AT 1/4-WATT AND HAVE A TOLERANCE OF 5% UNLESS OTHERWISE NOTED. RESISTOR VALUES ARE IN OHMS (k=1000).
2. CAPACITOR VALUES LESS THAN 1 ARE IN μ F (MICROFARADS); VALUES GREATER THAN 1 ARE IN pF (PICOFARADS) UNLESS OTHERWISE NOTED.
3. THE FUNCTION SWITCH IS SHOWN IN THE 5-WATT POSITION.
4. THE SWR SENSIVITY SWITCH IS SHOWN PUSHED IN.
5. ∇ THIS SYMBOL INDICATES A CIRCUIT BOARD GROUND.
6. \perp THIS SYMBOL INDICATES A CHASSIS GROUND.
7. \square THIS SYMBOL INDICATES A WIRE SOLDERED TO A CIRCUIT BOARD HOLE.

ILLUSTRATION BOOKLET

Page 5 — In the chart below the Schematic. Change the eighth item (R1) to read:

R1 6650 Ω , 1% 5230 Ω , 1% 5490 Ω , 1%

— Change the twelvth item (R8) to read:

R8 45.3 k Ω , 1% 27.4 k Ω , 1% 30.9 k Ω , 1%

Thank you,
HEATH COMPANY