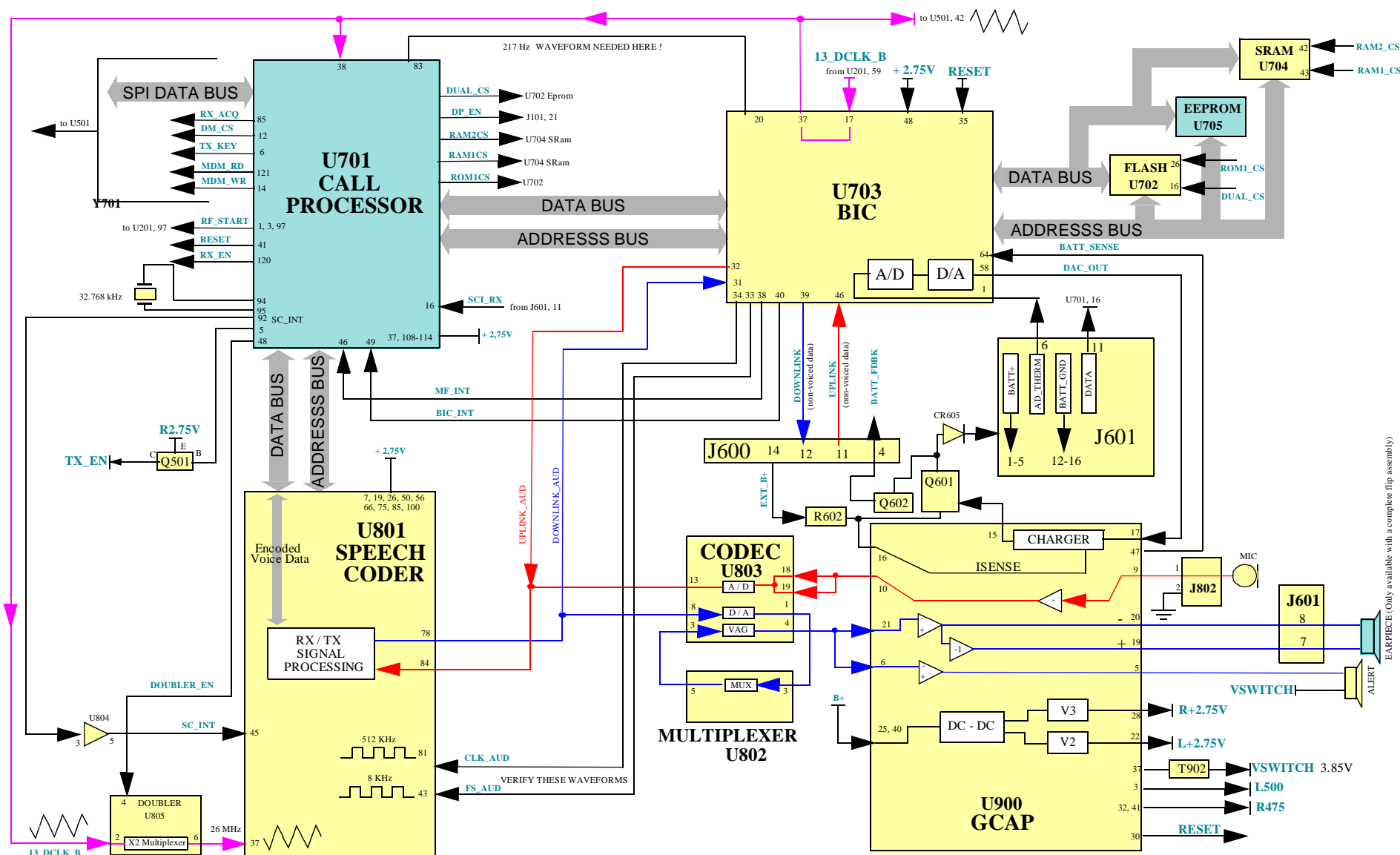


DCS StarTAC AUDIO LOGIC BLOCK DIAGRAM

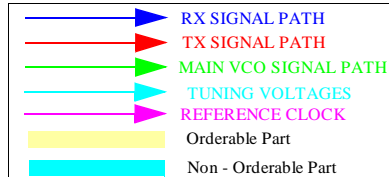


AL LAYER - ORDERABLE SPARES

Part Designator	Part Description	Part Number	Part Designator	Part Description	Part Number
A2 / A3	Ground clips Ant. tube	4209480E01	T902	Choke / Vswitch	2509306J01
AL800	Alert	5009473S01	U703	IC BIC	5109743E13
CR605	Diode / Charger	4809653F03	U704	IC SRAM	5109688L09
J101	32 Pin Display Connector	2809454C02	U801	IC Speech Coder	5199285C01
J600	15 Pin Extern Connector	0909449B04	U802	IC Multiplexer	5109632D44
J601	Flip Flexprint Connector	0909059E01	U803	Codec IC	5109920D15
J802	Microphone Connector	0909195E01	U804	IC Buffer	5109522E10
J900	SIM Connector	4009169E01	U805	IC Frequency Doubler	5109781E47
MIC	Microphone	5009536H15	U900	IC GCAP	5109632D69
Q501	Transistor TX_EN	4809607E05	Y701	XTAL 32.768KHZ	4809995L05
Q601	Power Transistor Charger	4809579E17	U702	Flashed Eprom (boot sector)	5102486T01
Q602	Transistor Batt Feedback	4809939C04	S1 - S3	Volume / Mute Switch	4009060E01
R602	Resistor / Charger Sensing	0680195M64	SH25 - 27	Ground Clips	4204774Z01

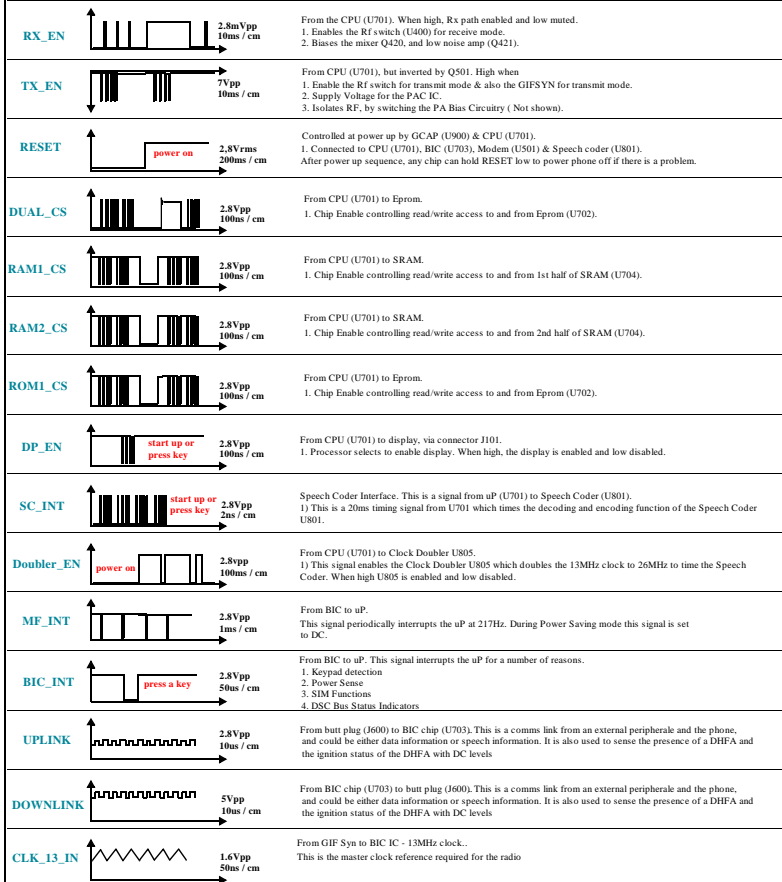
TEST COMMANDS

# press 2 sec.	Enter Manual Test Mode
01 #	Exit Manual Test Mode
07 #	Mute Rx Audio Path
08 #	Unmute Rx Audio Path
09 #	Mute Tx Audio Path
10 #	Unmute Tx Audio Path
11 #	Program Main Local Osc. to Channelbb
12 #	Set Tx Power level to fixed value
19 #	Display SW Version Number of Call Processor
20 #	Display SW Version Number of Modem
22 #	Display SW Version Number of Speech Coder
25 #	Set Continuous AGC
26xxx #	Set Continuous AFC
31x #	Initiate Pseudo-Random Sequence with Midamble
33xxx #	Synchronize to BCH Carrier
36 #	Initiate Acoustic Loopback
37 #	Stop Test
45xxx #	Serving Cell Power Level
46 #	Display Current Value of AFC DAC
47x #	Set Audio Volume
58 / xxxxxx #	Display / Modify Security Code
59 / xxx #	Display / Modify Lock Code
60 #	Display IMEI

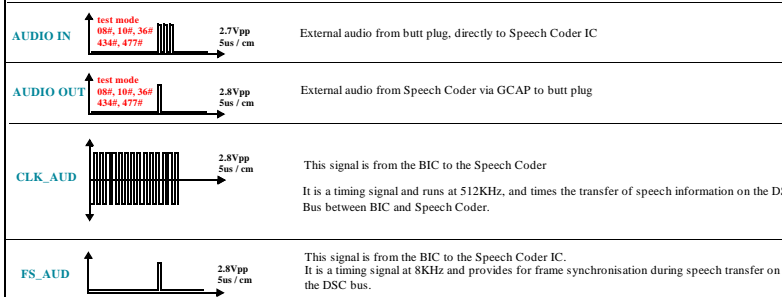


LOGIC BOARD SIGNALS

Measured in standby mode



Measured in test mode

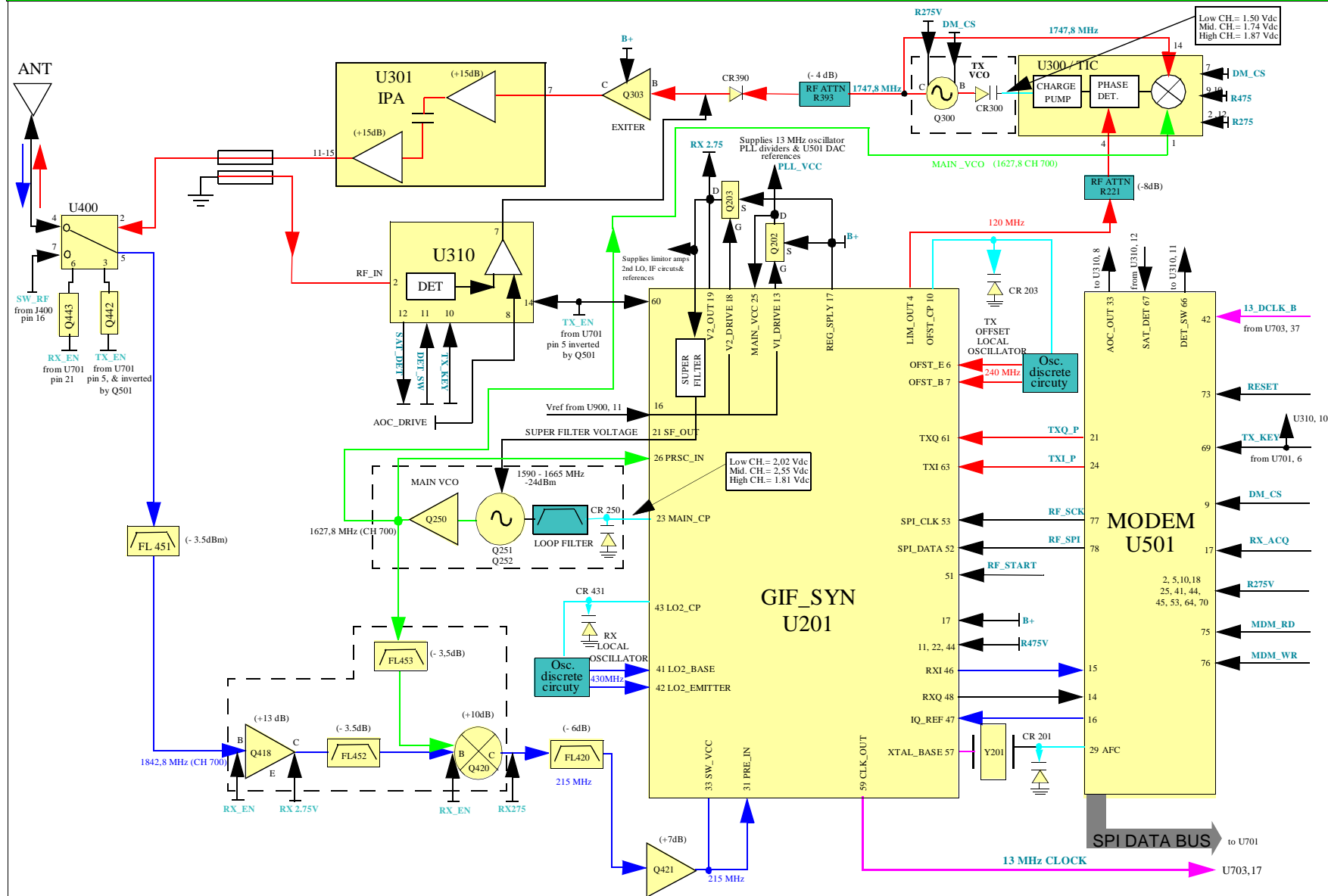


Europe, Middle East & Africa
Customer Services
Level 3 Authorised

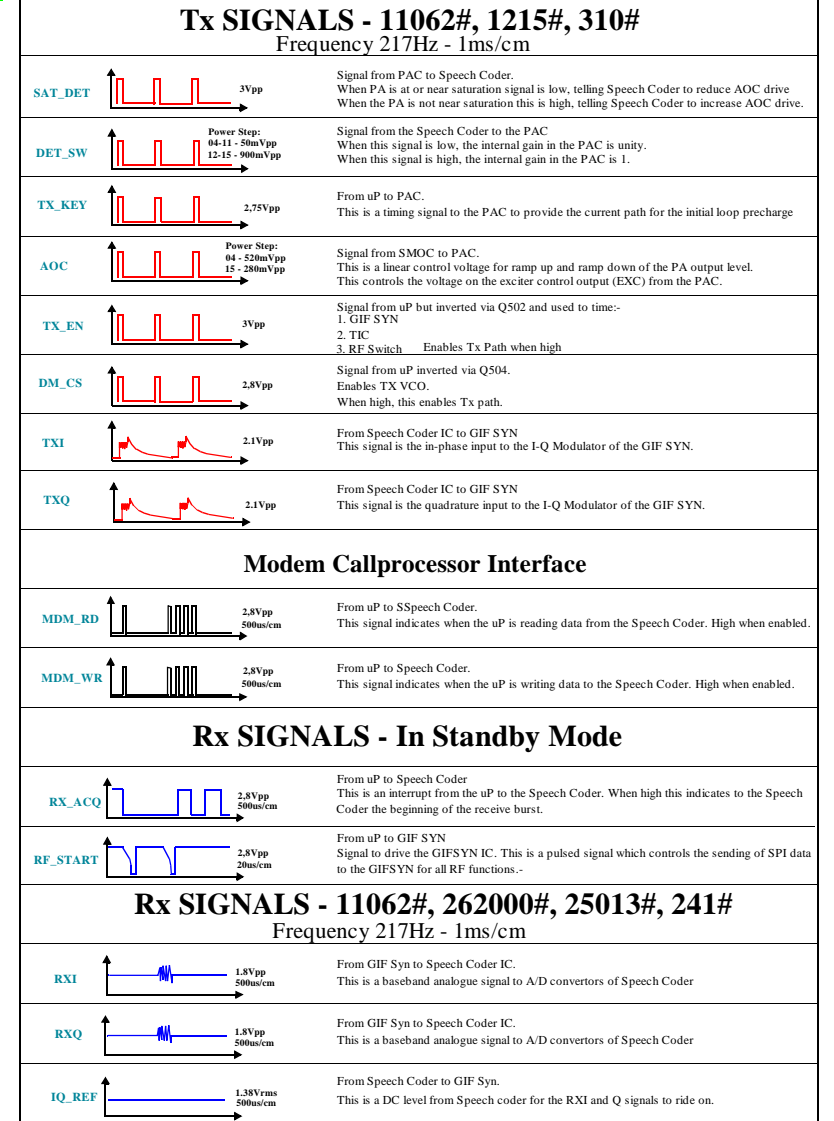
REVISIONS

Europe Middle East & Africa Customer Services	03.07.98
LEVEL 3 COLOUR DIAGRAMS	Rev. 1,2
DCS StarTAC	
Colin Jack, Michael Hansen, Billy Jenkins, Ralf Lorenzen	Page 1 of 2

DCS StarTAC RF BLOCK DIAGRAM



RF BOARD SIGNALS



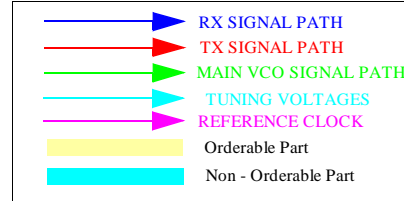
Europe, Middle East & Africa
Customer Services
Level 3 Authorised

RF LAYER - ORDERABLE SPARES

Designator	Description	Number	Designator	Description	Number
CR201	Master Xtal Varactor	4809641F04	Q303	Tx Exciter Transistor	4809527E19
CR203	Tx Local VCO Varactor	4809641F03	Q442	Rf Switch Control Transistor	4809939C08
CR250	Main VCO Varactor	4809641F02	Q443	Rf Switch Control Transistor	4809939C08
CR300	Tx VCO Varactor	4809612F03	Shield 30	Top of Frontend / Antenna Switch	2609225D01
CR390	Transmit Diode	4809948D10	Shield 31	Top of Main VCO / FL420	2609226D01
CR431	Rx Local VCO Varactor	4809641F03	Shield 32	Top of TIC / TX VCO	2609227D01
CR908	Signal Indicator LED	4809118D01	Shield 33	Top of GIFSYN	2609228D01
FL420	IF Saw Filter	9109179E01	Shield 34	Top of PA	2609229D01
FL451	1st Rx Filter	9109068E02	Shield 35	Top of Modem	2609230D01
FL452	2nd Rx Filter	9109155K01	SH60 - 63	Clips Ext. Battery Flexprint	4209388S01
FL453	VCO Filter	9109068E01	U201	GIF SYN	5109632D92
Q202	Receive Power Transistor	4809579E18	U300	TIC	5109632D94
Q203	GIF SYN Power Transistor	4809579E18	U301	PA	5109908K31
Q300	Tx VCO Transistor	4809940E01	U310	PAC	5109632D08
Q418	Rx Amplifier Transistor	4809527E20	U401	Rf Switch	5109572E03
Q420	Rx Mixer	4809940E01	U501	Modem	5199281C03

TEST COMMANDS

# press 2 sec.	Enter Manual Test Mode
01 #	Exit Manual Test Mode
07 #	Mute Rx Audio Path
08 #	Unmute Rx Audio Path
09 #	Mute Tx Audio Path
10 #	Unmute Tx Audio Path
11 #	Program Main Local Osc. to Channelbb
12 #	Set Tx Power level to fixed value
19 #	Display SW Version Number of Call Processor
20 #	Display SW Version Number of Modem
22 #	Display SW Version Number of Speech Coder
25 #	Set Continuous AGC
26xxxx #	Set Continuous AFC
31x #	Initiate Pseudo-Random Sequence with Midamble
33xxx #	Synchronize to BCH Carrier
36 #	Initiate Acoustic Loopback
37 #	Stop Test
45xxx #	Serving Cell Power Level
46 #	Display Current Value of AFC DAC
47x #	Set Audio Volume
58 / xxxxxx #	Display / Modify Security Code
59 / xxx #	Display / Modify Lock Code
60 #	Display IMEI
7100 #	Display Error Code



FREQUENCIES

CHANNEL	Tx	Rx	MAIN VCO	Rx I.F	Rx I.F L.O	Tx I.F	Tx I.F L.O
512-Low	1710	1805	1590	215	430	120	240
700-Middle	1747,8	1842,8	1627,8	215	430	120	240
885-High	1785	1880	1665	215	430	120	240

REVISIONS

Europe Middle East & Africa Customer Services	03.07.98
LEVEL 3 COLOUR DIAGRAMS	Rev. 1.2
DCS StarTAC	
Colin Jack, Michael Hansen, Billy Jenkins, Ralf Lorenzen	Page 2 of 2