


Transferring images using the TRANSFER button

Images recorded on the memory card in the camera can be transferred to a computer by pressing the TRANSFER button on the back of the camera.

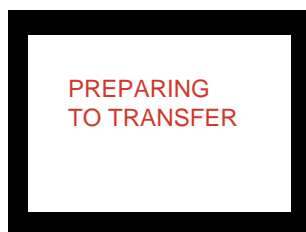
Before starting transfer, ensure that Nikon Transfer is running.

If Nikon Transfer does not start when you connect the camera to the computer, click [here](#)  to confirm that the camera is registered as a device with your computer.

Step 1 : Start transferring the images

When you press the TRANSFER button on the camera, the selected images are transferred. Refer to the camera manual for details on how to select images for transfer.

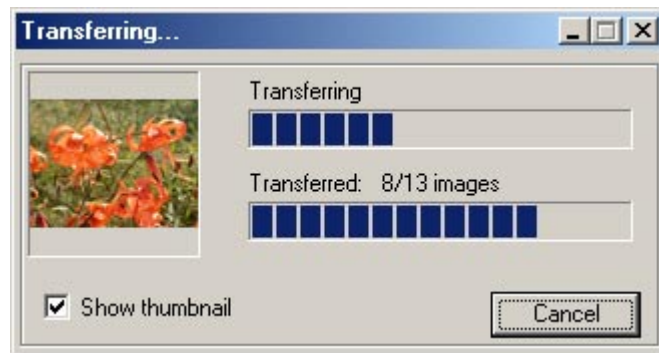
When you press the TRANSFER button, the message **PREPARING TO TRANSFER** appears in the camera monitor.



Step 2 :While transfer is in progress

A progress indicator is displayed while the images are being transferred. A thumbnail preview of the image currently being transferred is also displayed.

When multiple images are transferred, an indicator showing the overall progress of the transfer is displayed, as well as an indicator showing the progress of each image.



In the camera monitor, the message **TRANSFERRING IMAGE TO COMPUTER** is displayed.



No other operations can be performed on Nikon View 5 while the above window is displayed.



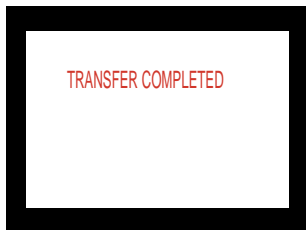
Transferring Images

Nikon Transfer allows you to specify whether the images should be erased from the memory card after they are transferred to the computer.

Step 3 : Finish transferring the images

When image transfer is complete, the message **TRANSFER COMPLETED** appears in the camera monitor.

You can now turn off the camera or unplug the interface cable.



Nikon Transfer settings

When you use the TRANSFER button on the camera, the images set for transfer in the camera are transferred regardless of the image transfer rule specified in Nikon Transfer.

The TRANSFER button and Nikon Transfer

When you transfer images using the TRANSFER button on the camera, you need to use Nikon Transfer. You cannot use the TRANSFER button when Nikon Browser or Nikon Viewer is displayed.

If Nikon Browser or Nikon Viewer is active, start Nikon Transfer by selecting **Connect to camera** from the **Tools** menu.