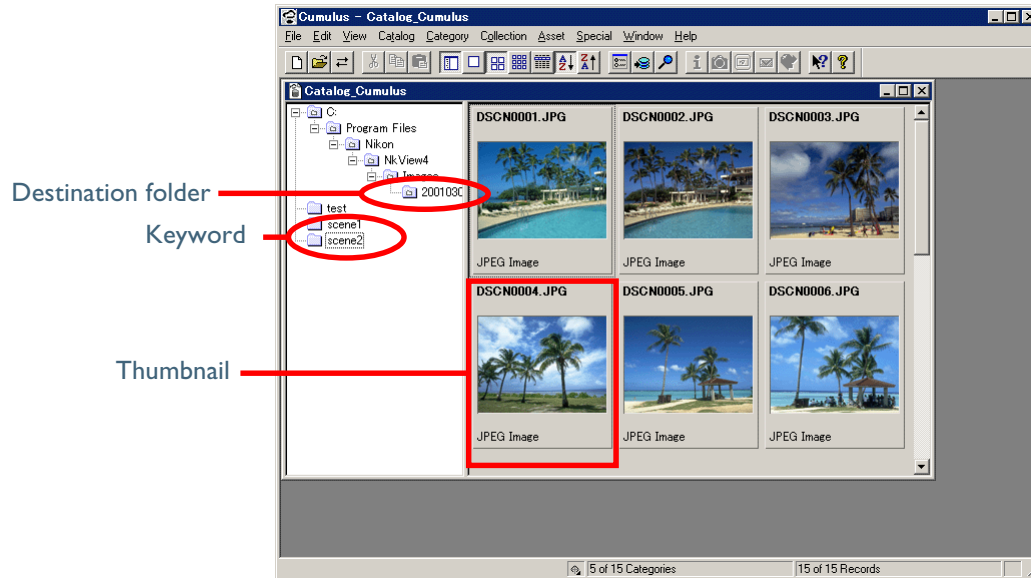


Cumulus 5.0

Nikon View 5 supports Cumulus 5.0, an image database program.

If you select Cumulus as the image database program in the **Database** tab (🔗 32) of the **Preferences** dialog box, Cumulus will start automatically when images are transferred to the computer using Nikon View 5. Images will be registered in a catalog file within Cumulus, which is also specified in the **Database** tab. Note that Cumulus 5.0 will also start any time you open a catalog file; a window like that shown below will be displayed. Once Cumulus is running, if you select the destination folder specified in the **Transfer** tab of the **Preferences** dialog box, the images already transferred to that folder will be displayed. If you have specified keywords to the transferred image files in the **IPTC Information** dialog box (🔗 33), a list of files with the chosen keywords will be displayed.



- Double-click the thumbnail of the image registered in the catalog file to enlarge the display of the image.
- Drag and drop the thumbnail to another image editing program such as Photoshop to open the image in that program.
- Drag and drop the thumbnail to the desktop or a folder to copy the image file in that location.
- Select **New Catalog** from the **File** menu to create a new catalog.
- Select **Add to Catalog** from the **Catalog** menu to add an already saved image to the catalog.

[Click here](#)  to proceed to the next step.

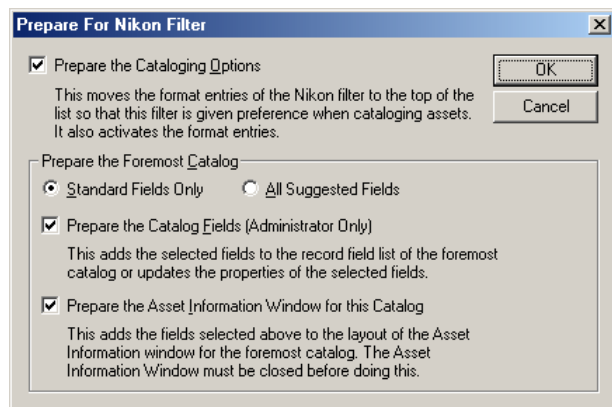
Nikon Cumulus Plug-in Settings

After installing the Nikon Cumulus Plug-in (Nikon filter), start Cumulus 5.0 and follow the instructions below.

Step 1

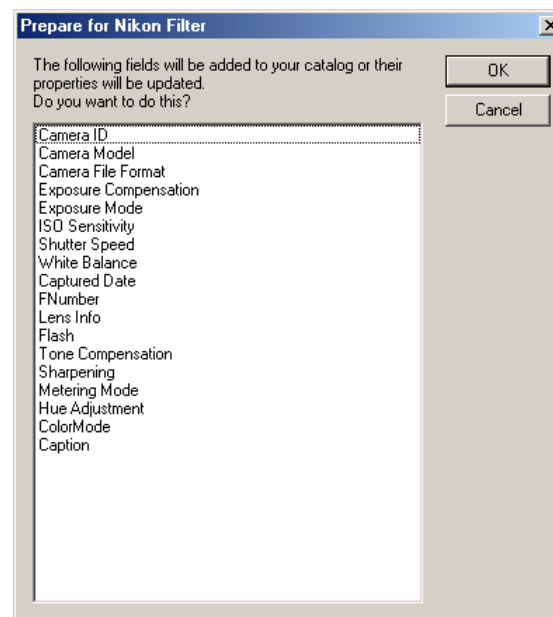
Select **Prepare for Nikon Filter** from the **Catalog** menu.

The **Prepare for Nikon Filter** dialog box will appear. Check that the boxes are checked as shown below, and click **OK**.



Step 2

A dialog box showing fields to be added to the asset information window will appear. Check that all the fields are displayed as shown below, and click **OK**.

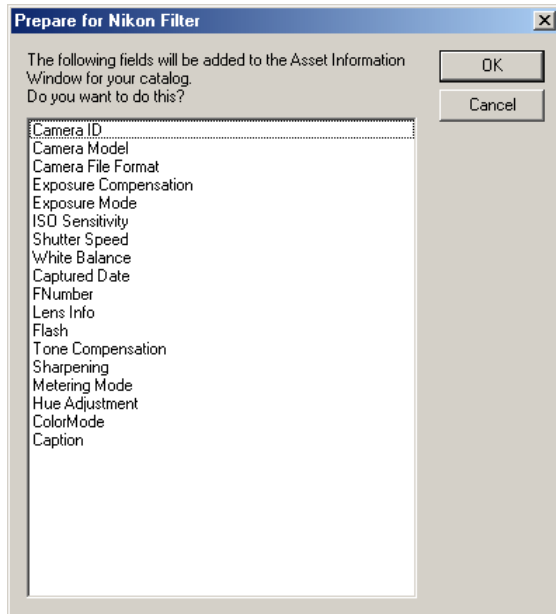


- Camera ID
- Camera Model
- Camera File Format
- Exposure Compensation
- Exposure Mode
- ISO Sensitivity
- Shutter Speed
- White Balance
- Captured Date
- FNumber
- Lens Info
- Flash
- Tone Compensation
- Sharpening
- Metering Mode
- Hue Adjustment
- ColorMode
- Caption

[Click here](#)  to proceed to the next step.

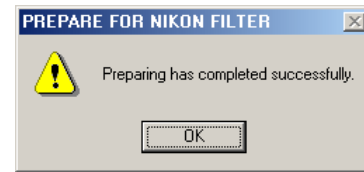
Step 3

A dialog box will appear to confirm the fields to be added to the asset information window. Click **OK**.



Step 4

When the window shown below appears, click **OK**.



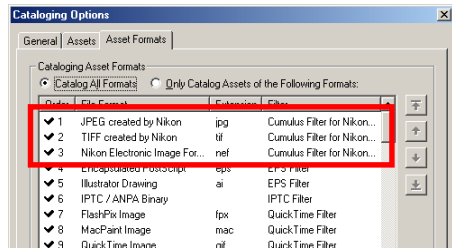
The priority of the file formats supported by Nikon Cumulus Plug-in has now been changed, and the asset information window fields will be added.

Click [here](#)  to proceed to the next step.

Step 5

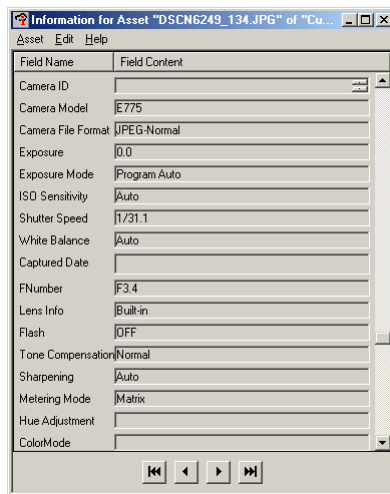
Select **Cataloging Options** from the **Catalog** menu. The **Cataloging Options** dialog box will be displayed.

Check that **JPEG created by Nikon**, **TIFF created by Nikon**, and **Nikon Electronic Image Format** are the first three items on the list.



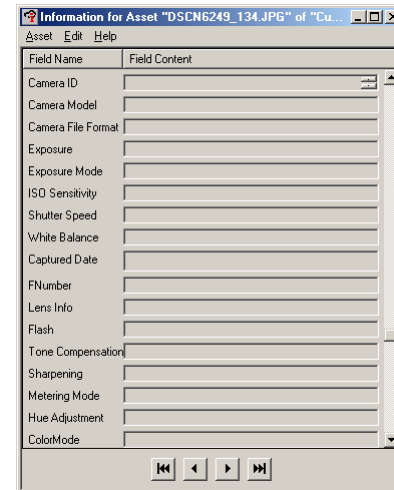
Step 6

Select **Information** from the **Asset** menu. The **Asset Information** dialog box will be displayed. Check that the information in each asset information field is correctly displayed.



Step 7

Select all currently displayed images, then select **Update record > All ways** from the **Catalog** menu to update the information fields.



When creating a new catalog, repeat steps 1 to 6.

Windows users click [here](#)  to return to the Install the Nikon Cumulus Plug-in screen.

Macintosh users click [here](#)  to return to the Install the Nikon Cumulus Plug-in screen.