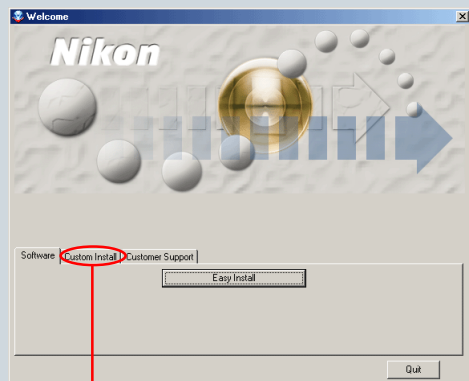


Installing Nikon View 5 under Windows

When you insert the Nikon View 5 CD into the CD-ROM drive, the **Select Language** dialog box appears. After you make settings in this dialog box, the **Install Center** window will be displayed automatically. In the **Install Center** dialog box, select either Easy install or Custom install as the method of installation.

Easy install

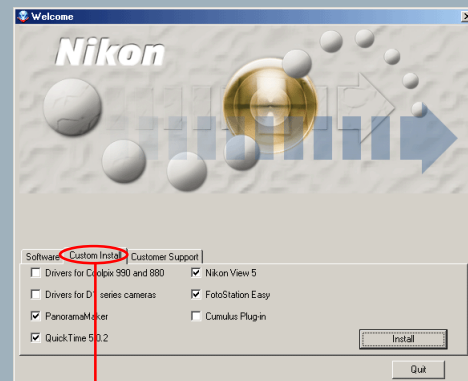
Click **Easy Install** in the **Software** tab to install Mass Storage Driver (Windows 98 SE only), Panorama Maker, QuickTime 5.0.2, Nikon View 5, and FotoStation Easy.



Software tab

Custom install

From the list in the **Custom Install** tab, select the programs you want to install.



Custom Install tab

Click [here](#)  to proceed to the next step.

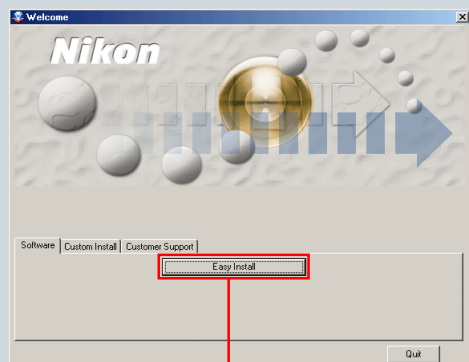


Windows 2000 Professional Windows XP Home Edition/Professional

Log on as Administrator when installing Nikon View 5 on Windows 2000 Professional or as Computer Administrator when installing Nikon View 5 on Windows XP Home Edition/Professional.

After you make settings in the **Select Language** dialog box, the **Install Center** window will be displayed automatically. The **Install Center** window has the **Software**, **Custom install**, and **Customer Support** tabs. Click **Quit** if you want to close the **Install Center** window and cancel installation.

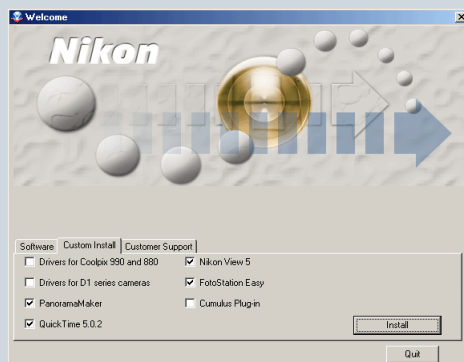
Software



Easy Install button

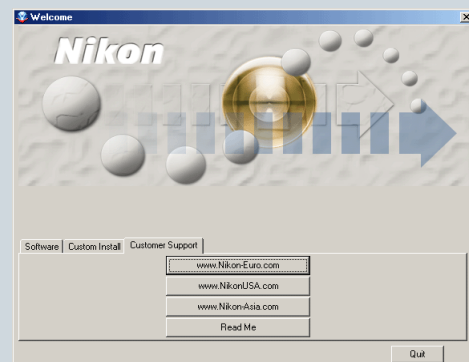
Click this button to install Panorama Maker, QuickTime 5.0.2, Nikon View 5, and FotoStation Easy. Mass Storage Driver is also installed if your operating system is Windows 98 Second Edition.

Custom Install



Displays a list of programs that can be installed. Select the check box next to each of the programs you want to install, and then click **Install**.

Customer Support



Click this button to view the Nikon technical support Web site for your area (your computer must be configured for connection to the Internet). Click **Read Me** to open the **Read Me** file. Be sure to read it before installation.

Click [here](#)  to proceed to the next step.

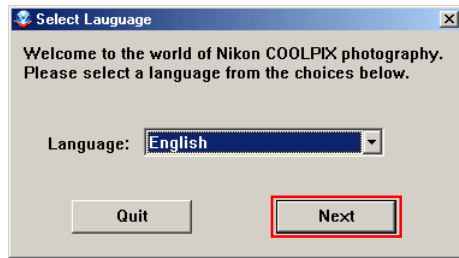
If the Install Center dialog box does not appear

If the **Install Center** dialog box does not appear when the CD-ROM is inserted in the drive:

1. Double-click the **My Computer** icon
2. In the **My Computer** window, use the right mouse button to click on the icon for the CD-ROM drive containing the Nikon View 5 CD
3. Select **Autoreun** from the menu that appears

Step 1 : Select a language

From the pull-down menu, select the language to use in Nikon View 5 and click **Next**.



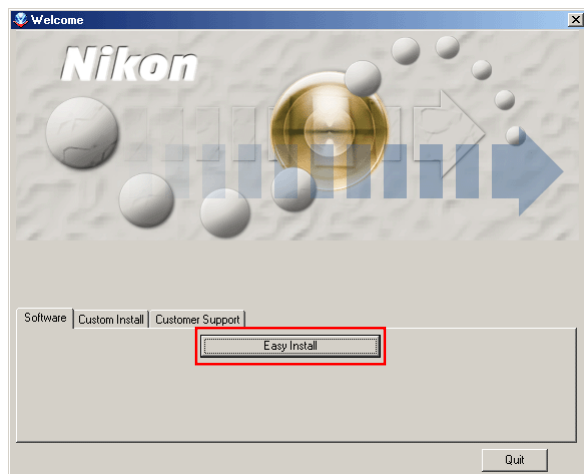
Click [here](#)  to proceed to the next step.

Step 2 : Choose a method of installation

There are two methods of installing Nikon View 5: Easy install and Custom install. Read the "Before installation" note below right, then select one of the methods of installation.

Easy install

Click the **Easy Install** button



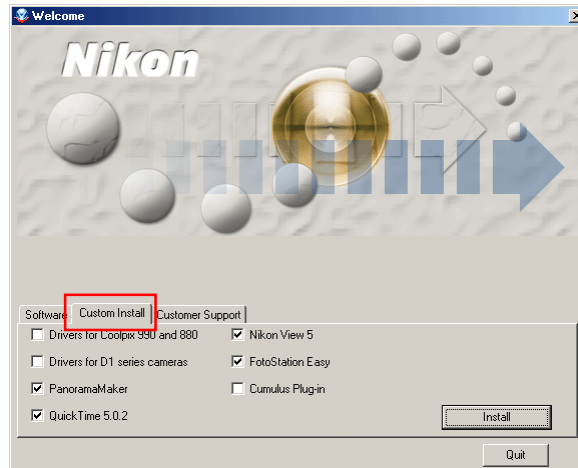
Easy install is done using the **Software** tab.

Click **Easy Install** to start the installation of Mass Storage Driver (Windows 98SE only), Panorama Maker, QuickTime 5.0.2, Nikon View 5, and FotoStation Easy.

Click [here](#)  to proceed to the next step.

Custom install

C-1 : Display the Custom Install tab



Custom install is done using the **Custom Install** tab.

Click the **Custom Install** tab in the **Install Center** window to open the **Custom Install** tab page.

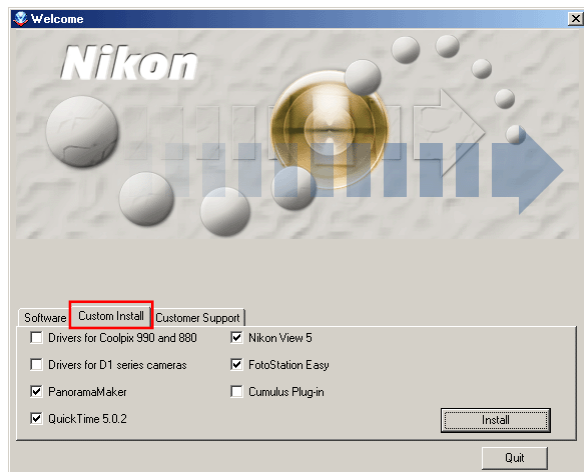
To continue installation, click [here](#) .

Before installation

Before installing Nikon View 5 and the device driver, make sure the camera is disconnected from the computer. If the Device Wizard launches when connecting a camera before installing device driver, click **Cancel** to exit the Wizard.

C-2 : Select the programs

From the list in the **Custom Install** tab, select the programs you want to install. If you choose to install multiple programs, the programs are installed in the order displayed in the **Custom Install** tab.



Install mass storage driver check box

Select this check box to install the driver for the COOLPIX series (excluding 990/880).

Install mass storage driver appears in the list only if your operating system is Windows 98 Second Edition.

Drivers for Coolpix 990 and 880 check box

Select this check box to install the drivers for the COOLPIX990/880.

Drivers for D1 series cameras check box

Select this check box to install the drivers for the D1 series.

PanoramaMaker check box

Select this check box to install Panorama Maker.

QuickTime 5.0.2 check box

Select this check box to install Apple Computer's QuickTime 5.0.2.

Nikon View 5 check box

Select this check box to install Nikon View 5.

FotoStation Easy check box

Select this check box to install FotoStation Easy.

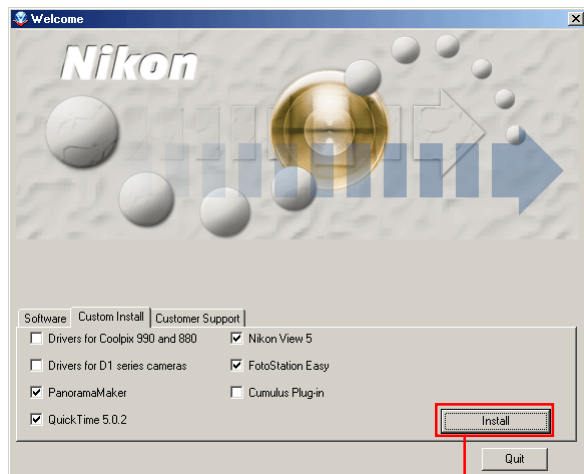
Cumulus Plug-in check box

Select this check box to install Nikon Cumulus Plug-in. You do not need to install this if you do not have Canto's Cumulus 5.

Click [here](#)  to proceed to the next step.

C-3 : Click Install

After you have selected the programs you want to install, click **Install** in the **Custom Install** tab.



Install button

Click [here](#)  to proceed to the next step.

Image Database Applications

Nikon View 5 supports **FotoStation Easy**, an image database program that registers images in a catalog.

Cases where device driver installation is not required

If your computer is running Windows Millennium Edition, Windows 2000 Professional, or Windows XP Home Edition/Professional, you do not need to install the device driver for the COOLPIX series, except for the COOLPIX990/880.

Step 3 : Install the software

Click **Easy Install** or **Install** to start installation of the programs.

I. Install device driver

If you selected Easy install under Windows 98 Second Edition, or **Install mass storage driver** (Windows 98 Second Edition only), **Drivers for Coolpix 990 and 880**, or **Drivers for D1 series cameras** in Custom install, the installation of the device driver starts.

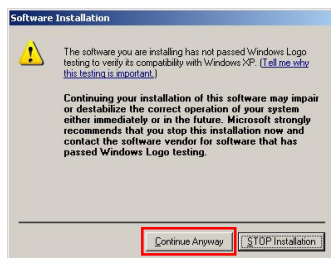
If you selected Easy install under an operating system other than Windows 98 Second Edition, or if you did not select a device driver in Custom install, proceed to the next step.

The following explanation uses **Drivers for Coolpix 990 and 880**.

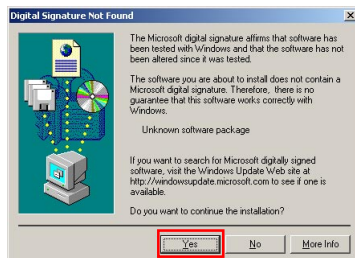


When installing the device driver

When you install a device driver in Windows XP or Windows 2000 Professional, one of the dialog boxes shown below is displayed. Click **Continue Anyway** or **Yes** to continue installation.



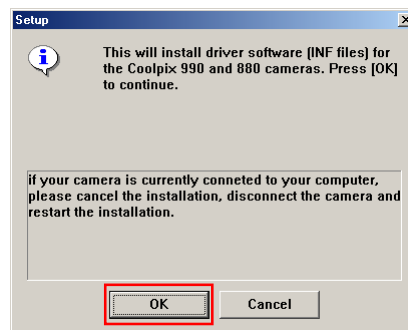
Windows XP



Windows 2000 Professional

I-1 : Check the camera connection

The **Setup** dialog box is displayed, asking you to confirm that a camera is not connected to your computer. Make sure a camera is not connected, and click **OK** to begin installation.



I-2 : Complete the installation

A dialog box indicating that installation is complete is displayed. Click **OK**, a dialog box asking you to restart your computer will appear. If you selected **PanoramaMaker**, **QuickTime 5.0.2**, or **Cumulus Plug-in** in the **Software** tab, click **Cancel** and proceed to the next step. If you did not, click **OK** to restart your computer.



Click [here](#)  to proceed to the next step.

2. Installing Panorama Maker

If you selected Easy install, or if you selected **PanoramaMaker** in Custom install, the installation of Panorama Maker begins. When the installer starts, follow the on-screen instructions to complete installation.

If you did not select **PanoramaMaker**, proceed to the next step.

3. Installing QuickTime

If you selected Easy install, or if you selected **QuickTime 5.0.2** in Custom install, the installation of QuickTime 5.0.2 begins. When the installer starts, follow the on-screen instructions to complete installation. Note you are not required to fill out the **Enter Registration** dialog box. Click **Next** to continue installation without entering registration information.



If you did not select **QuickTime 5.0.2**, proceed to the next step.

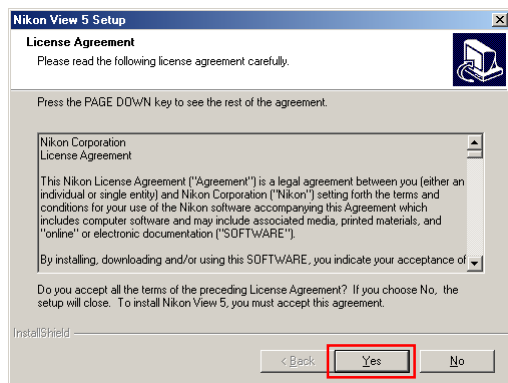
Click [here](#)  to proceed to the next step.

4. Installing Nikon View 5

If you selected Easy install, or if you selected **NikonView 5** in Custom install, the installation of Nikon View 5 begins. If you did not select **Nikon View 5**, proceed to the next step.

4-1 :Accept the license agreement

When you start installation of Nikon View 5, the license agreement is displayed. Read the agreement carefully, and click **Yes** to continue installation.



Existing Versions of Nikon View

If an older version of Nikon View 5 is installed on your computer, it must be uninstalled before installing Nikon View 5.

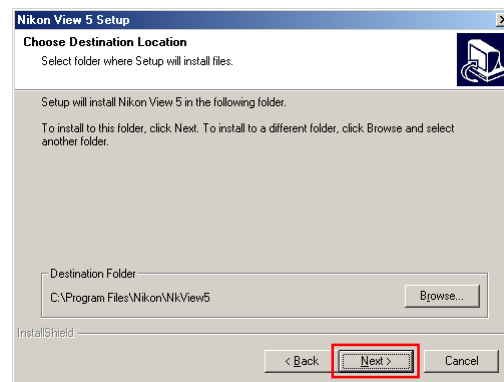
Nikon View 5 does not support connection of COOLPIX950, 910, 900, 800, or 700 digital cameras.

Nikon View 5 can however be used to view photographs taken with these cameras if the camera memory card is inserted into a digital camera that Nikon View 5 supports.

4-2 : Choose a location for Nikon View 5

The folder to which Nikon View 5 will be installed is shown in the **Destination Folder** area. To install to this folder, click **Next**.

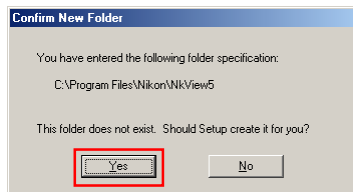
To select a new folder, click the **Browse** button and navigate to the desired location.



Click [here](#)  to proceed to the next step.

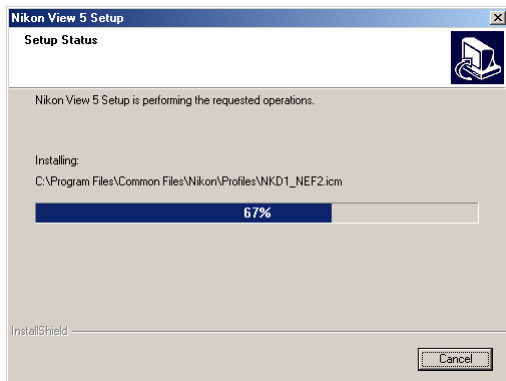
4-3: Create the destination folder

If the folder shown in the **Destination Folder** area in the previous step does not already exist, you will be asked whether you want to create the folder. Click **Yes** to create the folder automatically and proceed to the next step.



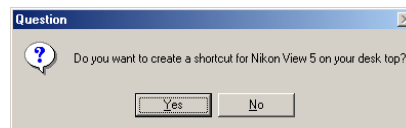
4-4 : Start installation

While installation is in progress, the dialog shown below will be displayed.



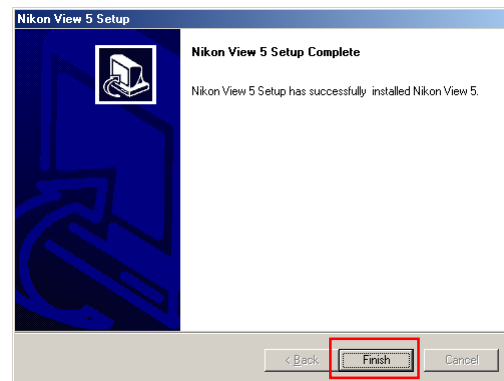
4-5 : Create a shortcut icon

You will be asked whether to create a shortcut icon for Nikon View 5 on the desktop. To create a shortcut, click **Yes**, otherwise click **No**.



4-6 : Complete the installation


A dialog box appears indicating that installation of Nikon View 5 is complete. Click **Finish**, a dialog box asking you if you want to restart your computer will appear. If you selected other programs to install besides Nikon View 5 in the **Software** tab, select **No**. The installation of other programs will start. If you selected only Nikon View 5, select **Yes** to restart your computer.



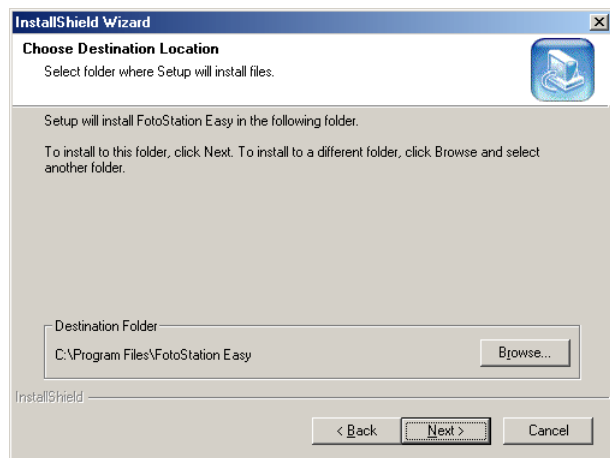
Click [here](#)  to proceed to the next step.

5. Installing FotoStation Easy


If you selected Easy install, or if you selected **FotoStation Easy** in Custom install, the installation of **FotoStation Easy** begins. A dialog box asking you to select the desired language is displayed. Select a language, click **OK**. The dialog box below is displayed, follow the on-screen instructions to complete installation.

If a message is displayed stating that a newer version of QuickTime is already installed, click **OK**. Click [here](#)  for more information on FotoStation Easy after installation.

If you did not select **FotoStation Easy**, proceed to the next step.



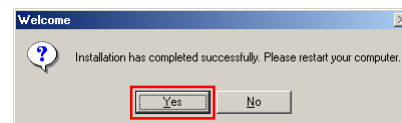
6. Install the Nikon Cumulus Plug-in


If you selected **Cumulus Plug-in** in Custom install, the installation of Nikon Cumulus Plug-in begins. When the installer starts, follow the on-screen instructions to complete installation. Click [here](#)  for settings after the installation. If you did not select **Cumulus Plug-in**, proceed to the next step.

7. Quit the installer

When all the selected programs are installed, the dialog box shown below will be displayed.

Click **Yes** to restart your computer.



Click [here](#)  to go back to “If you are using a camera that is equipped with a TRANSFER button.”



The Nikon Cumulus Plug-in

This plug-in allows Cumulus 5.0 to handle image information from Nikon digital cameras. Install Nikon Cumulus Plug-in if you are using Canto's Cumulus 5 as your image database program.