

# Confirming the device registration of the COOLPIX series (Windows Millennium Edition (Me))

The following explanation uses COOLPIX2500 as an example.

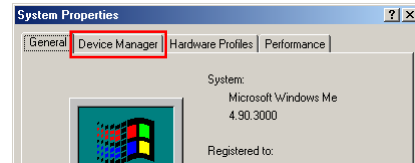
After installing Nikon View 5 (device driver) and restarting the computer, connect your camera to the computer using a USB cable and turn on the camera. The camera is registered automatically.



Follow the instructions below to check that the camera has been correctly registered with the system.

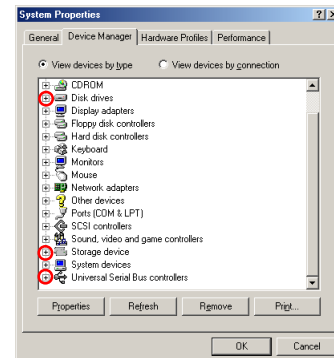
## Step 1

Right-click the **My Computer** icon on the desktop. Select **Properties** from the menu which appears. The **System Properties** dialog box opens. Click the **Device Manager** tab.



## Step 2

Confirm that **Disk drives**, **Storage device**, and **Universal Serial Bus controllers** are listed in the **Device Manager** tab, then click the plus sign (+) next to each of these device types.



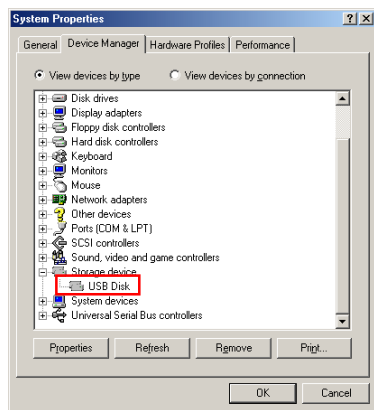
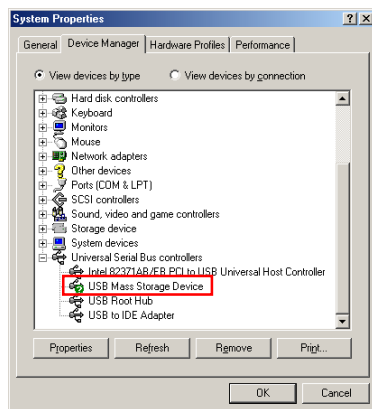
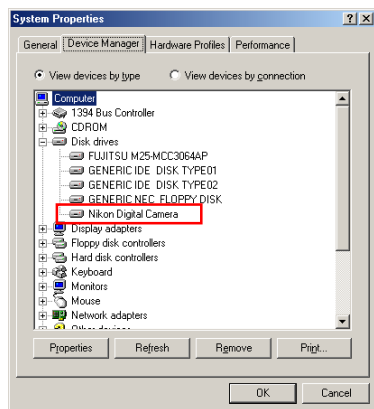
## Before connecting the camera to the computer

Be sure to install Nikon View 5 (device driver) before connecting your camera to the computer.

[Click here](#)  to proceed to the next step.

## Step 3

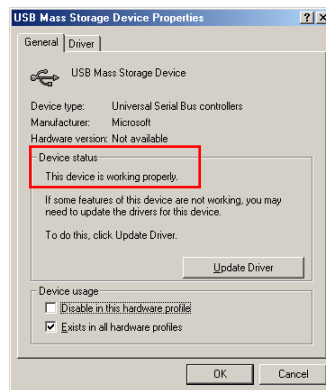
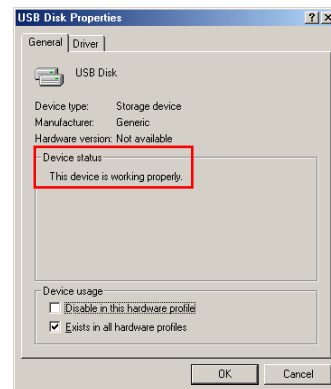
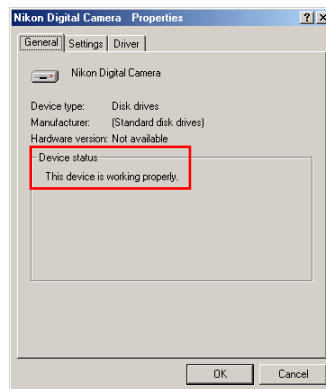
Confirm that **Nikon Digital Camera**, **USB Disk**, and **USB Mass Storage Device** are listed respectively under **Disk drives**, **Storage device**, and **Universal Serial Bus controllers**. Double-click each of these listings to display the associated **Properties** window.



If the **Nikon Digital Camera E2500** is listed under **Other devices**, delete **Nikon Digital Camera E2500**, then turn off the camera and turn it on again.

## Step 4

The properties for the selected device are displayed. Click the **General** tab and confirm that **This device is working properly** appears under **Device status**. Click **OK**.



Device registration is now complete. Click **OK** to close the **System Properties** dialog box.

[Click here](#)  to return to the **Nikon View 5 Reference Manual**.