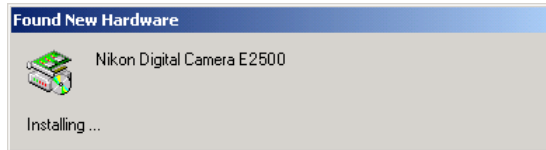


Confirming the device registration of the COOLPIX series (Windows 2000 Professional)

The following explanation uses COOLPIX2500 as an example.

After installing Nikon View 5 and restarting the computer, connect your camera to the computer using a USB cable and turn on the camera. The camera is registered automatically.

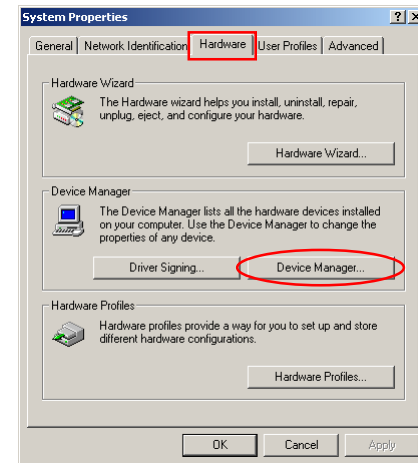


Follow the instructions below to check that the camera has been correctly registered with the system.

Step 1

Right-click the **My Computer** icon on the desktop. Select **Properties** from the menu which appears. The **System Properties** dialog box opens.

Open the **Hardware** tab and click the **Device Manager** button in the **Device Manager** area.



Log On

Log on as Administrator to register the camera.



Before connecting the camera to the computer

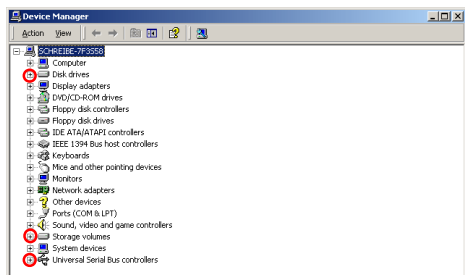
Be sure to install Nikon View 5 before connecting your camera to the computer.

Click [here](#)  to proceed to the next step.

Step 2

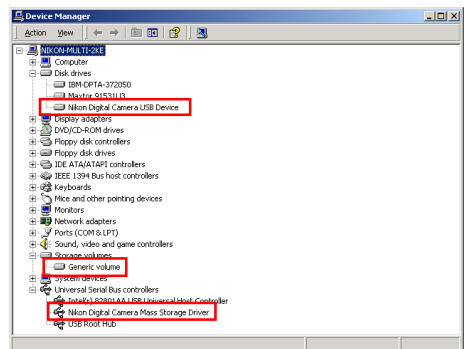
The **Device Manager** will be displayed.

Confirm that **Disk drives**, **Storage volumes**, and **Universal Serial Bus controllers** are listed in **Device Manager**, then click the plus sign (+) next to each of these device types.



Step 3

Confirm that **Nikon Digital Camera USB Device**, **Generic volume**, and **Nikon Digital Camera Mass Storage Driver** are listed respectively under **Disk drives**, **Storage volumes**, and **Universal Serial Bus controllers**. Double-click each of these listings to open the associated **Properties** window.

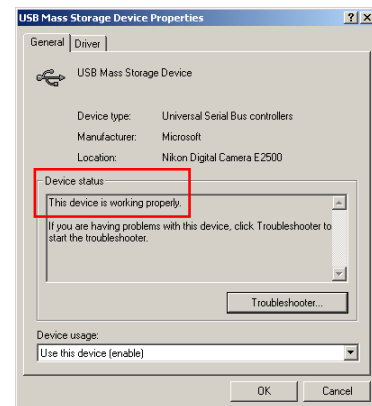
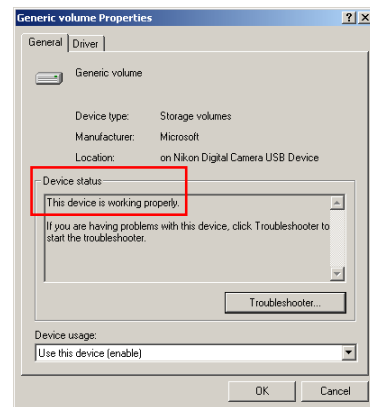
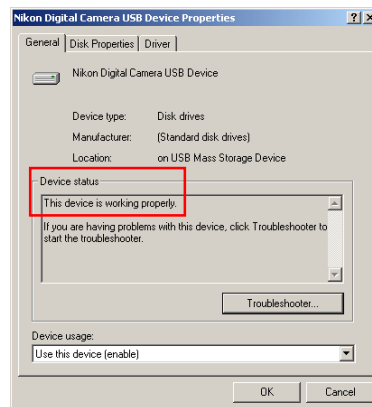


If **Nikon Digital Camera E2500** appears under **Other devices**, delete **Nikon Digital Camera E2500**, then turn off the camera and turn it on again.

Step 4

The properties for the selected device are displayed.

Click the General tab and confirm that **This device is working properly** appears under **Device status**. Click **OK**.



Device registration is now complete. Click **OK** to close the **System Properties** dialog box.

[Click here](#) to return to the **Nikon View 5 Reference Manual**