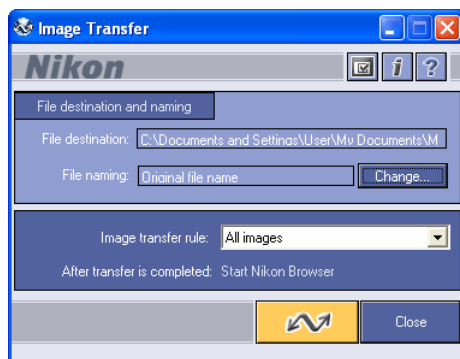


Starting Nikon View 5

Starting Nikon Transfer

Once installation is complete, Nikon Transfer will start automatically whenever your Nikon digital camera is connected to your computer and turned on, or when the camera memory card is inserted in a card slot or in a card reader connected to the computer. Note that only one camera can be connected to the computer at a time.



On a Macintosh, Nikon Transfer starts after Nikon Browser.

If Nikon Transfer does not start

If Nikon Transfer does not start, refer to Device Registration to confirm that the camera is registered as a device with your computer.

Auto start

Nikon Transfer will start automatically when:

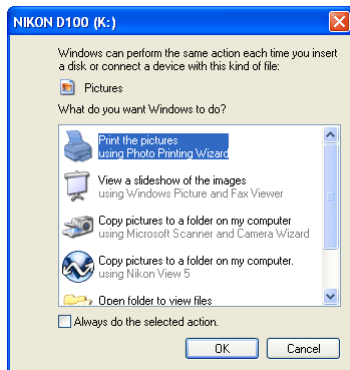
- A supported camera is connected while on and with a memory card in place
- A supported camera with a memory card in place is connected and then turned on
- A memory card from the COOLPIX series (excluding COOLPIX600) or D1 series is inserted in a card reader or card slot



Starting Nikon View under Windows XP

If your computer is running Windows XP Home Edition/Professional, procedures to start Nikon View 5 are different from other operating systems.

Under Windows XP, the **Removable Disk** dialog box is displayed when you connect the camera to the computer or insert the memory card into the card reader or card slot. Select **Copy pictures to a folder on my computer (using Nikon View 5)** in this dialog box to start Nikon Transfer.



Removable Disk dialog



The Removable Disk dialog

If you connect a D1, D1X, D1H, or COOLPIX990/880 :
The Removable Disk dialog is not displayed. Nikon Transfer will start automatically.

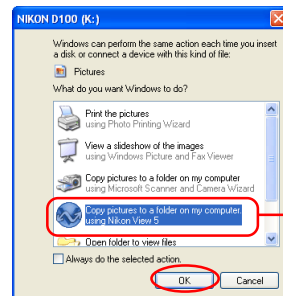
If you connect a camera using a PTP connection :
The **Select the program to launch for this action** dialog will be displayed.

If you connect a camera using Mass Storage connection :
The Removable Disk dialog is displayed automatically if the memory card contains images (and they are not all hidden). If there are no images on the memory card, or if all the images on the memory card are hidden, the Removable Disk window will not be displayed.

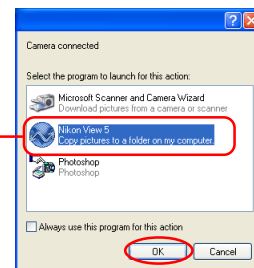
Start Procedure

To start Nikon Transfer under Windows XP, follow the steps below.

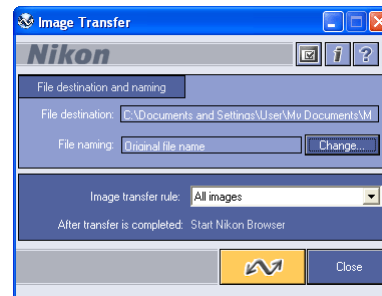
1. Connect the camera to your computer using an interface cable or insert the memory card in a card reader or card slot.
2. Turn the camera on.
3. The **Removable Disk** dialog box is displayed.
4. Select **Copy pictures to a folder on my computer (using Nikon View 5)**.



Select Nikon View 5



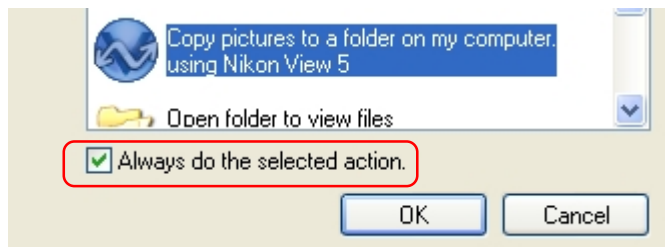
5. Click **OK**.
6. Nikon Transfer starts.



Always do the selected action check box

In the **Removable Disk** dialog box, if you select **Copy pictures to a folder on my computer (using Nikon View 5)** and the **Always do the selected action** check box, the **Removable Disk** dialog box will not be displayed the next time you connect a camera to the computer or insert a memory card in a card reader or card slot. Nikon Transfer starts automatically.

If you clear the **Always do the selected action** check box, the **Removable Disk** dialog box will be displayed.

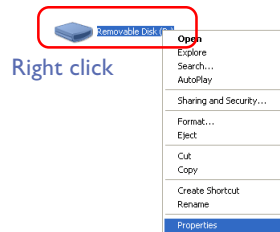


Even if the **Always do the selected action** box is checked, the **Removable Disk** dialog box will appear if :

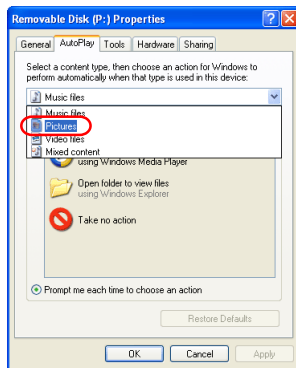
- you are using a different camera from the one you were using when you checked the check box.
- you are using a different USB port from the one you were using when you checked the check box.

Displaying the AutoPlay Window

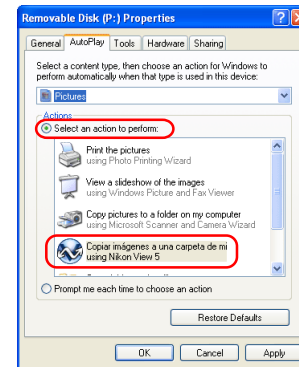
To display the AutoPlay window after selecting **Always do the selected action**, connect the camera to the computer or insert a memory card from a Nikon digital camera into a card reader or PC card slot and select **My Computer** from the **Start** menu. Click on the removable disk corresponding to the camera with the right mouse button and select **Properties** from the menu that appears.



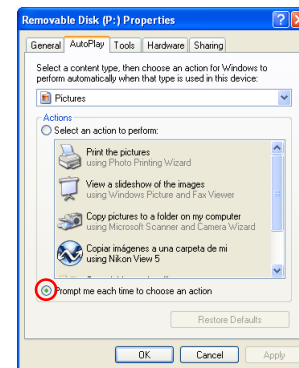
The Removable Disk Properties dialog will be displayed. Open the AutoPlay tab and select **Pictures** from the list of content types.



A list of actions will be displayed with **Copy pictures to a folder on my computer using Nikon View 5** selected.



Check **Prompt me each time to choose an action**.



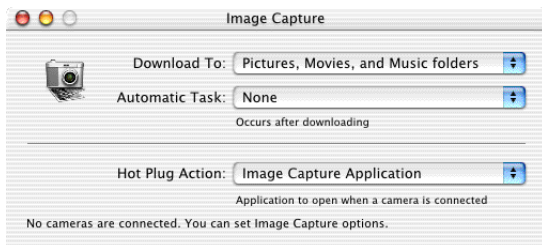
Click **OK** to close the Removable Disk Properties dialog.

Starting Nikon View under Mac OS X (10.1.2) or later

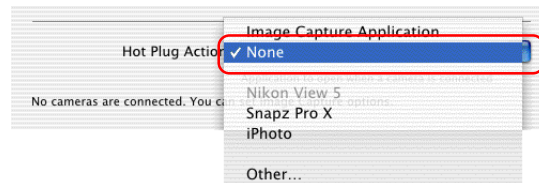
If the operating system on your computer is Mac OS X, it is recommended that you follow the steps below before connecting your camera to the computer for the first time.

1. Start up Image Capture

Select **Applications** from the Finder **Go** menu. Double click the Image Capture icon to display the dialog box below.



2. Select **None** for Automatic Task and Hot Plug Action. (If you install Apple iPhoto software after you install Nikon View 5, please repeat steps 1 and 2 to prevent both iPhoto and Nikon View 5 from starting when you connect your camera.) Close the Image Capture dialog.



3. Connect your camera to the computer and turn the computer on to automatically start Nikon Transfer.



Starting Image Capture

You can also start Image Capture by double-clicking its icon in the Applications folder.









If Nikon Transfer Does Not Start







This section describes the possible causes and solutions when Nikon Transfer does not start. If the problem persists, contact your retailer or our User Support Center.

The procedure for installing Nikon View 5 varies with your operating system and make of camera. Click the links below for complete installation instructions. After reading these instructions, you will be returned to the present manual.

If nothing is displayed

Possible Cause	
<p>A memory card is not inserted in the camera, card reader or card slot.</p> <p>The images on the memory card were taken with a make of camera not supported under Nikon View 5.</p> <p>The camera is not properly registered (Windows version only).</p> <p>Disable auto launch is selected in the Auto launch tab of the Preferences dialog box.</p> <p>Your computer is running Nikon Capture 2 or Nikon Capture 3 Camera Control.</p>	<div> Connecting to a Computer</div> <div> Connecting to a Computer</div> <div> Device Registration</div> <div> Nikon Browser — Preferences</div> <div></div>

If a window other than Nikon Transfer is displayed

Possible Cause	
<p>The icon on the desktop was used to start the program.</p> <p>The Start menu was used to start the program (Windows version only).</p> <p>The icon in Nikon Software folder was used to start the program (Macintosh version only).</p> <p>The operating system on your computer is Windows XP.</p> <p>The operating system on your computer is Mac OS X.</p>	<div> Nikon Transfer</div> <div> Nikon Transfer</div> <div> Nikon Transfer</div> <div> 2</div> <div> 5</div>