

# Installing Nikon View 5 under Windows — Overview

When you insert the Nikon View 5 CD into the CD-ROM drive, the **Select Language** dialog box appears. After you have selected the desired language, the **Install Center** window will appear, allowing you to select either **Easy install** or **Custom install** as the method of installation.

## Easy install

**Easy Install** installs the following software, in the order shown below.

- |   |                     |
|---|---------------------|
| 1. PTP Driver for Coolpix series cameras <sup>*1</sup>                  | 4. QuickTime 5.0.2  |
| 2. Coolpix Camera Drivers (all models except 990 and 880) <sup>*2</sup> | 5. Nikon View 5     |
| 3. PanoramaMaker  | 6. FotoStation Easy |

<sup>\*1</sup> **Windows XP only**

<sup>\*2</sup> **Windows 98SE only**

## Custom install

**Custom Install** allows you to select and install the desired software from the list below. The selected software will be installed in the order of display.

- |   |                     |
|---|---------------------|
| 1. PTP Driver for Coolpix series cameras <sup>*1</sup>                  | 5. PanoramaMaker    |
| 2. Coolpix Camera Drivers (all models except 990 and 880) <sup>*2</sup> | 6. QuickTime 5.0.2  |
| 3. Drivers for Coolpix 990 and 880                                      | 7. Nikon View 5     |
| 4. Drivers for D1 Series cameras  | 8. Fotostation Easy |
|   | 9. Cumulus Plug-in  |

## Existing versions of Nikon View and Nikon Capture

If an older version of Nikon View 5, or a version of Nikon Capture 1.x is installed on your computer, it must be uninstalled before installing Nikon View 5.

## Cameras that are not supported by Nikon View 5

Nikon View 5 does not support connection of COOLPIX950, 910, 900, 800, or 700 digital cameras. Nikon View 5 can however be used to view photographs taken with these cameras if the camera memory card is inserted into a digital camera that Nikon View 5 supports.

## Windows 2000 Professional / Windows XP Home Edition/Professional

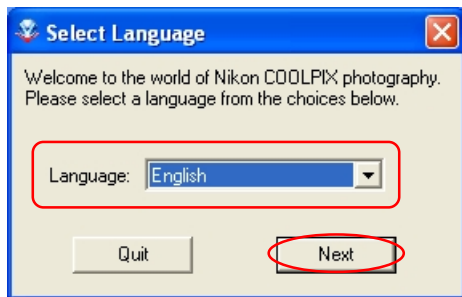
Log on as Administrator when installing Nikon View 5 on Windows 2000 Professional or as Computer Administrator when installing Nikon View 5 on Windows XP Home Edition/Professional.



# Installing Nikon View 5 under Windows — Installation Instructions

## i — Select a language

Select the language of your choice from the pull-down menu. After you select a language, click **Next** to display the **Install Center** window.



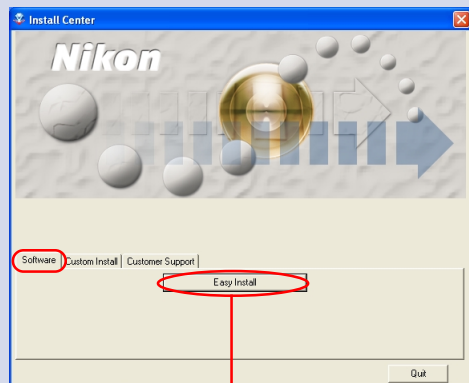
## ii — Select Easy Install or Custom Install

The **Install Center** window contains three tabs: **Software**, **Custom Install**, and **Customer Support**.

The **Easy Install** button is in the **Software** tab. The **Custom Install** button is in the **Custom Install** Tab.


Click **Quit** if you want to close the **Install Center** window and cancel installation.

### Software

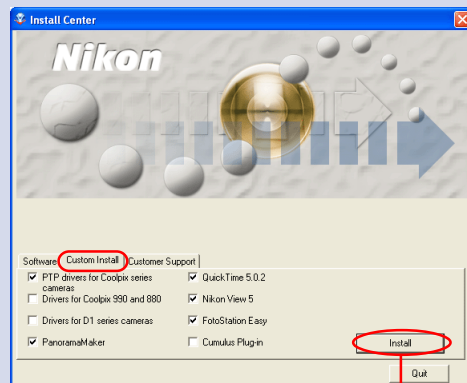


#### Easy Install button

Click this button to install the PTP Drivers for Coolpix series cameras<sup>\*1</sup>, Coolpix Camera Drivers (all models except 990 and 880)<sup>\*2</sup>, PanoramaMaker, QuickTime 5.0.2, Nikon View 5 and FotoStation Easy.

Click [here](#)  for Easy Install instructions

### Custom Install

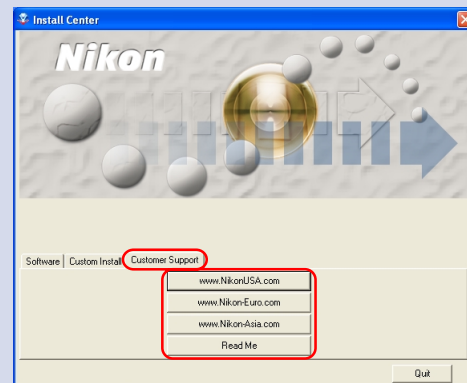


#### Custom Install button

The **Custom Install** tab gives you a choice of programs to install. Select the check box next to each of the programs you wish to use, then click **Install**.

Click [here](#)  for Custom Install instructions

### Customer Support



Click the button for your area to view one of the Nikon technical support Web sites (your computer must be configured for connection to the Internet).

Click **Read Me** to open the Read Me file. Be sure to read it before installation.

<sup>\*1</sup> Windows XP only, <sup>\*2</sup> Windows 98SE only



### If the Install Center dialog box does not appear

If the **Install Center** window does not appear when the CD-ROM is inserted in the drive:

1. Double-click the **My Computer** icon.
2. In the **My Computer** window, use the right mouse button to click on the icon for the CD-ROM drive containing the Nikon View 5 CD.
3. Select **AutoPlay** from the menu that appears.

