

# Installing Nikon View 5 on a Macintosh — Overview

Insert the Nikon View 5 CD into the CD-ROM. If you are using Mac OS 9.0, 9.1, or 9.2, the **Select Language** dialog box appears automatically. If you are using Mac OS X, the dialog box will appear when you double-click the **Nikon View 5** icon on the desktop, and then double-click the **Welcome** icon. After you select the desired language the **Install Center** window will appear, allowing you to select and install the desired software.

## Step 1: Install the software

Select and install the desired software from the list in the **Software** tab. The selected software will be installed in the order shown below.

1. PanoramaMaker

2. Nikon View 5

3. Quick Time 5.0.2<sup>\*1</sup>

4. FotoStation Easy

<sup>\*1</sup> If you are using Mac OS X, Quick Time 5.0.2 will not be available for selection.

## Step 2: Install the Plug-in

The **Other Software** tab allows you to install the Cumulus Plug-in. You will only need this plug-in if you wish to use Canto Cumulus as your image database software.

Cumulus Plug-in<sup>\*2</sup>

<sup>\*2</sup> If you are using Mac OS X, Cumulus Plug-in will not be available for selection.

## Existing versions of Nikon View and Nikon Capture

If an older version of Nikon View 5, or a version of Nikon Capture 1.x is installed on your computer, it must be uninstalled before installing Nikon View 5.

## Cameras that are not supported by Nikon View 5

Nikon View 5 does not support connection of COOLPIX950, 910, 900, 800, or 700 digital cameras. Nikon View 5 can however be used to view photographs taken with these cameras if the camera memory card is inserted into a digital camera that Nikon View 5 supports.

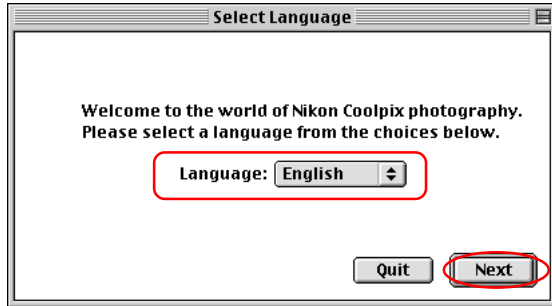
## Mac OS X

Log on as Administrator when installing Nikon View 5 under Mac OS X.

# Installing Nikon View 5 on a Macintosh — Installation Instructions

## i — Select a language

Select the language of your choice from the pull-down menu. After you select a language, click **Next** to display the **Install Center** window.

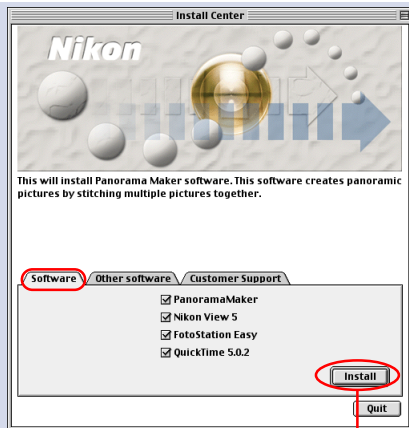


### iii — Select the software you wish to install

The **Install Center** window contains three tabs; **Software**, **Other Software**, and **Customer Support**. Note that if you are using Mac OS X, the **Other Software** tab is not available and the **Install Center** window contains only two tabs.

Click **Quit** if you want to close the **Install Center** window and cancel installation.

#### Software

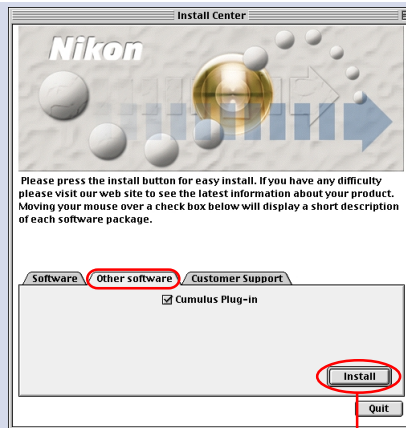


Install button

The **Software** tab gives you a choice of programs to install. Select the check box next to each of the programs you wish to use, then click **Install**.

Click [here](#)  to install the desired software.

#### Other Software

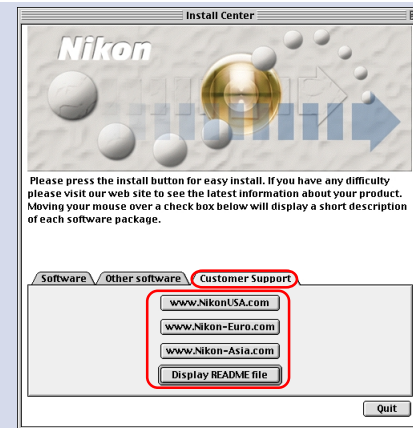


Install Cumulus Plug-in button

The **Other Software** tab allows you to install the Cumulus Plug-in. You will only need this plug-in if you wish to use Canto Cumulus as your image database software. If you are using Mac OS X, the plug-in will not be available for selection.

Click [here](#)  to install the plug-in.

#### Customer Support



Click the button for your area to view one of the Nikon technical support Web sites (your computer must be configured for connection to the Internet).

Click **Read Me** to open the Read Me file. Be sure to read it before installation.

