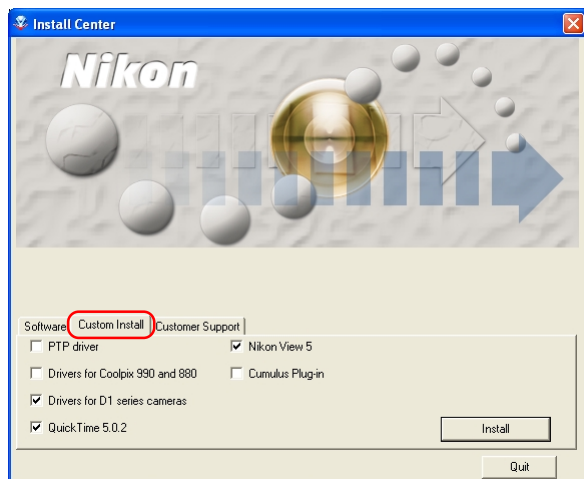


Custom Install

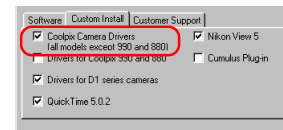
Step 1: Select the software to be installed

Select the programs you want to install from the list in the **Custom Install** tab.



Coolpix Camera Drivers (all models except 990 and 880)

Select this check box to install the driver for COOLPIX series cameras (excluding 990/880). This check box only appears if you are using Windows 98 Second Edition.



PTP Drivers

Select this check box to install PTP drivers. This check box is only displayed if you are using Windows XP.

Drivers for Coolpix 990 and 880

Select this check box to install the drivers for the COOLPIX990/880.

Drivers for D1 series cameras

Select this check box to install the drivers for D1 series cameras.

QuickTime 5.0.2

Select this check box to install Apple Computer's QuickTime 5.0.2.

Nikon View 5

Select this check box to install Nikon View 5.

Cumulus Plug-in

Select this check box to install Nikon Cumulus Plug-in. You will only need this plug-in if you wish to use Canto Cumulus as your image database software.

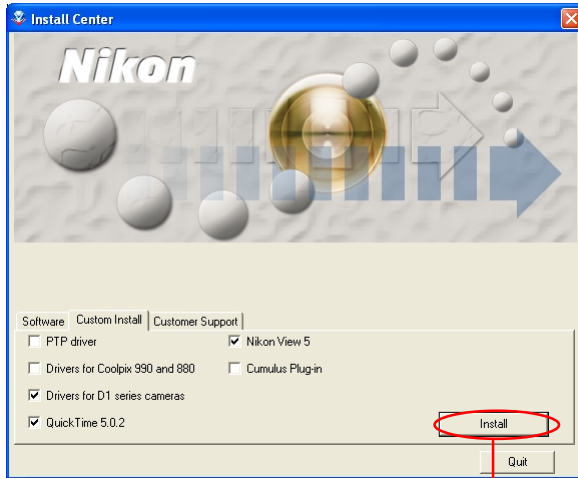
Before installation

Before installing Nikon View 5 and the device driver, make sure the camera is disconnected from the computer. If the Device Wizard launches when you connect a camera, click **Cancel** to exit the Wizard.



Step 2: Install the selected software

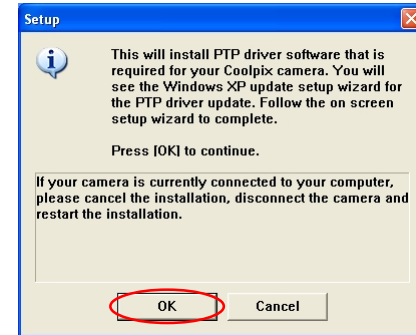
After selecting the programs you want to install, click **Install**. If you have chosen more than one program, the programs are installed in the order of display.



Install button

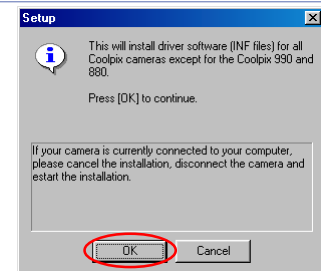
2.1 — Install PTP Driver (Windows XP only)

If you are using Windows XP and selected the **PTP Driver**, the installation of the driver will start. The Setup dialog box below is displayed, asking you to confirm that a camera is not connected to your computer. Make sure a camera is not connected, and click **OK** to begin installation.



Windows 98 SE

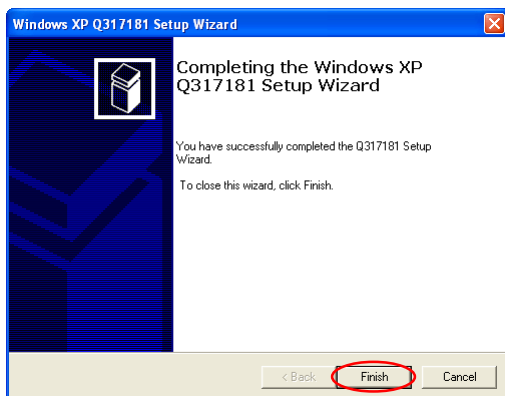
If you are using Windows 98 SE, drivers for all Coolpix cameras (all models except 990 and 880) will be installed if selected. The dialog box shown right will be displayed. Click **OK** to continue.



After the PTP drivers have been installed, the Setup wizard may start automatically.

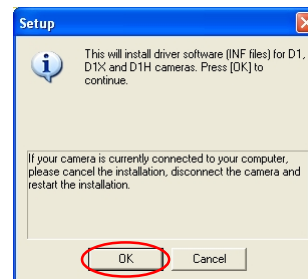


If the wizard starts, follow the instructions on screen. When the final screen appears, click **Finish** to complete the wizard. Do not restart your computer even if instructed to do so.

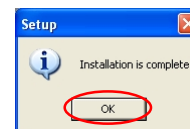


2.2 — Install Other drivers

If you selected **Drivers for Coolpix 990 and 880**, or **Drivers for D1 series cameras**, the installation of the device driver starts. The **Setup** dialog box below is displayed, asking you to confirm that a camera is not connected to your computer. Make sure a camera is not connected, and click **OK** to begin installation.



A dialog box appears, indicating that installation is complete. Click **OK**.



Drivers for Coolpix 990 and 880

If you install the Drivers for Coolpix 990 and 880, a dialog box similar to the one shown right may be displayed. Click **Continue Anyway** or **Yes** to continue installation.



2.3 — Installing QuickTime 5.0.2

The **Enter Registration** dialog box (see below) appears, showing that you are now installing QuickTime 5.0.2. Note that you do not have to enter registration information. Click **Next** to continue. Follow the remaining on-screen instructions to complete installation.

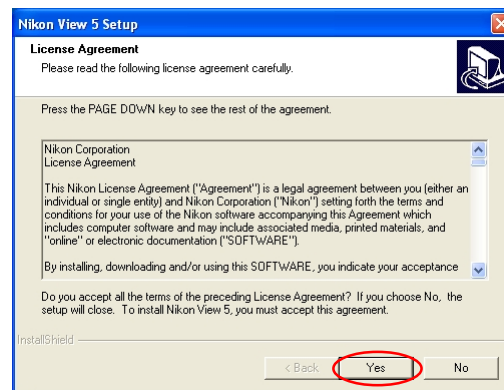


2.4 — Installing Nikon View 5

The license agreement appears, showing that you are now installing Nikon View 5.

2.4.1 — Accept the license agreement

When you start installation of Nikon View 5, the license agreement is displayed. Read the agreement carefully, and click **Yes** if you wish to continue installation.



Existing versions of Nikon View

If an older version of Nikon View 5 is installed on your computer, it must be uninstalled before installing Nikon View 5.

Nikon View 5 does not support connection of COOLPIX950, 910, 900, 800, or 700 digital cameras.

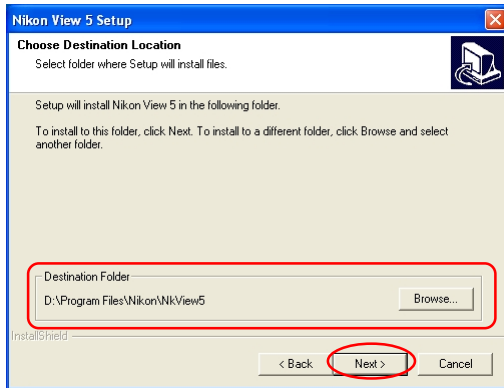
Nikon View 5 can however be used to view photographs taken with these cameras if the camera memory card is inserted into a digital camera that Nikon View 5 supports.



2.4.2 — Choose a location for Nikon View 5

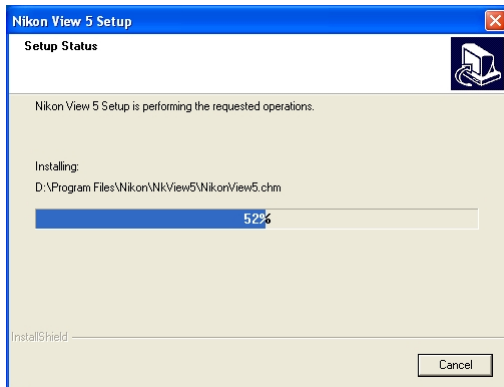
The folder to which Nikon View 5 will be installed is shown in the **Destination Folder** area. To install to this folder, click **Next**.

To select a new folder, click **Browse** and navigate to the desired location.



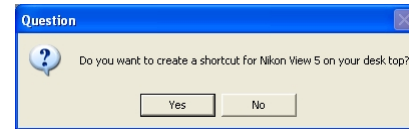
2.4.3 — Start installation

While installation is in progress, the dialog box shown below will be displayed.



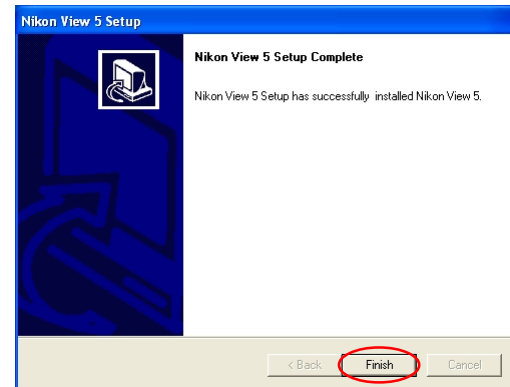
2.4.4 — Create a shortcut icon

When the progress indicator reaches 100%, the dialog shown below appears. Click **Yes** to create a shortcut, allowing you to start Nikon View 5 directly from an icon on the desktop. If you do not want to create a shortcut, click **No**.



2.4.5 — Complete the installation

A dialog box appears indicating that installation of Nikon View 5 is complete. Click **Finish**.



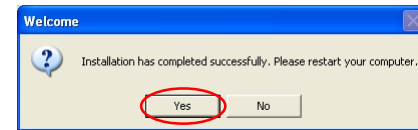
2.5 — Install the Nikon Cumulus Plug-in

The installation of Nikon Cumulus Plug-in begins. Follow the on-screen instructions to complete installation. For information on Cumulus settings, refer to the About Cumulus appendix. If you did not select **Cumulus Plug-in**, proceed to the next step.

2.6 — Restart your computer

You have now installed all the programs selected in the **Custom Install tab**.

The dialog box shown below appears. Select **Yes** to restart your computer.



The custom install procedure is now complete.



The Nikon Cumulus Plug-in

This plug-in allows Cumulus 5.0 to handle image information from Nikon digital cameras. Install Nikon Cumulus Plug-in if you are using Canto's Cumulus 5 as your image database program.

