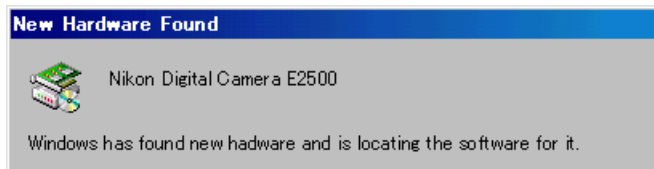


Confirming the registration (COOLPIX series / D100) -Windows 98 Second Edition (SE) -

The following explanation uses COOLPIX2500 as an example.

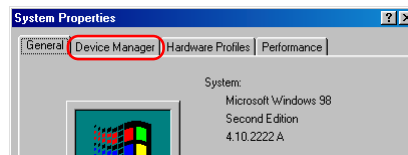
After installing Nikon View 5 (device driver) and restarting the computer, connect your camera to the computer using a USB cable and turn on the camera. The camera is registered automatically.



Follow the instructions below to check that the camera has been correctly registered with the system.

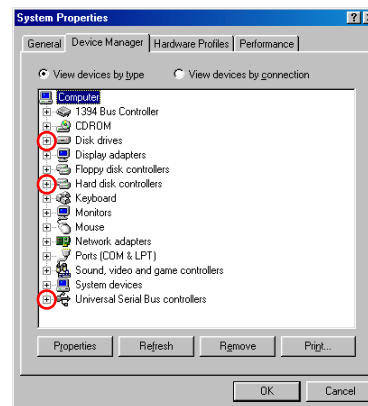
Step 1

Right-click the **My Computer** icon on the desktop. Select **Properties** from the menu which appears. The **System Properties** dialog box opens. Click the **Device Manager** tab.



Step 2

Confirm that **Disk drives**, **Hard disk controllers**, and **Universal Serial Bus controllers** are listed in the **Device Manager** tab, then click the plus sign (+) next to each of these device types.



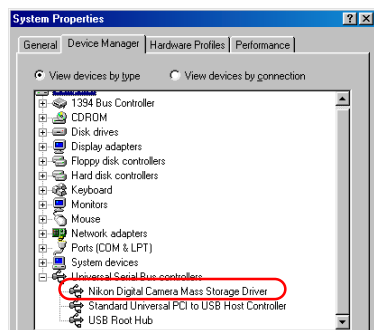
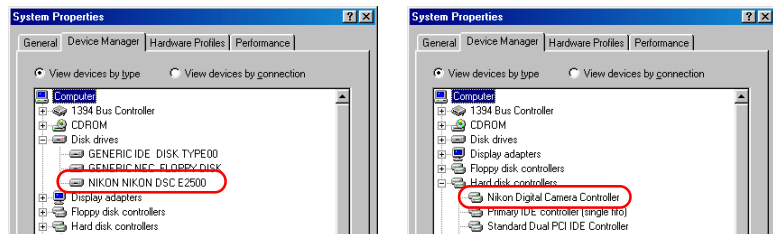
Before connecting the camera to the computer

Be sure to install Nikon View 5 (device driver) before connecting your camera to the computer.

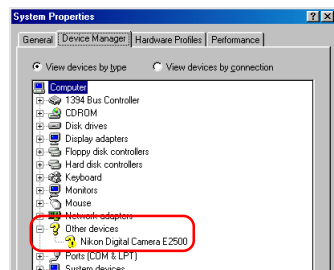


Step 3

Confirm that **NIKON NIKON DSC E2500**, **Nikon Digital Camera Controller**, and **Nikon Digital Camera Mass Storage Driver** are listed respectively under **Disk drives**, **Hard disk controllers**, and **Universal Serial Bus controllers**. Double-click each of these listings to open the associated **Properties** window.



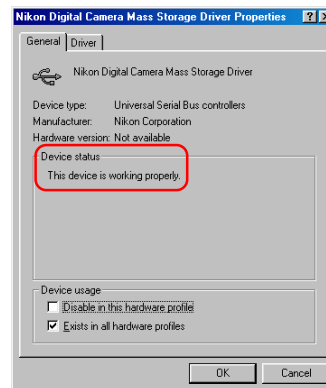
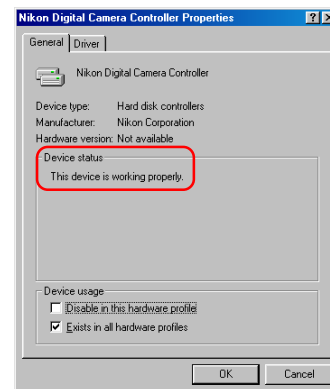
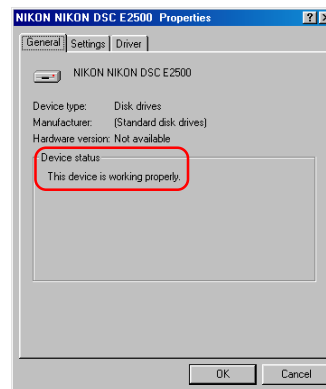
If **Nikon Digital Camera E2500** is listed under **Other devices**, as shown right, click [here](#) to reinstall the drivers.



If the three drivers above are not listed in the **Device Manager** and **Nikon Digital Camera E2500** is not listed under **Other devices**, disconnect the camera, and restart the computer. When the computer has restarted, reconnect the camera to the computer.

Step 4

The properties for the selected device are displayed. Click the **General** tab and confirm that **This device is working properly** appears under **Device status**. Click **OK**.



Device registration is now complete. Click **OK** to close the **System Properties** dialog box.