

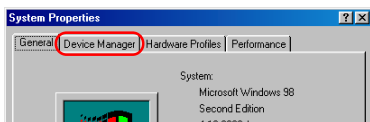
Updating Drivers for the D1 - Windows 98 Second Edition (SE) -

For Users Who Are Already Using the D1 with Nikon View DX or Nikon Capture

If you are already using the D1 with Nikon View DX or Nikon Capture, you will need to update the camera drivers.

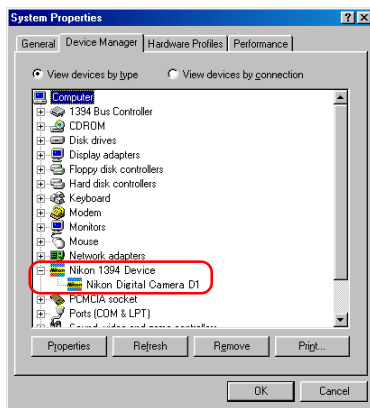
Step 1

Click the My Computer icon on the desktop with the right mouse button and select Properties from the menu that appears. The System Properties dialog will be displayed; click the Device Manager tab.



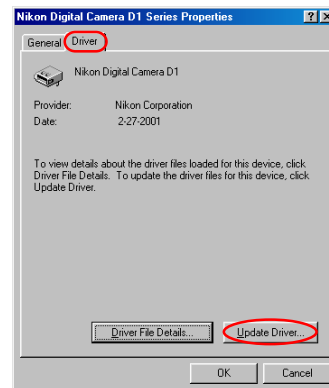
Step 2

The Device Manager sheet will be displayed. Under the entry “Nikon 1394 Device,” double-click “Nikon Digital Camera D1.”



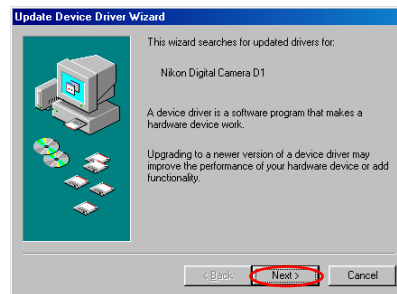
Step 3

The Nikon Digital Camera D1 Series Properties dialog will be displayed. Open the Driver tab and click **Update Driver....**



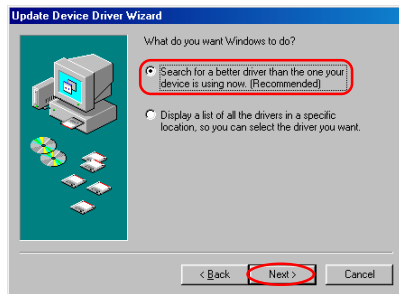
Step 4

The Windows update device driver wizard will be displayed; click **Next.**



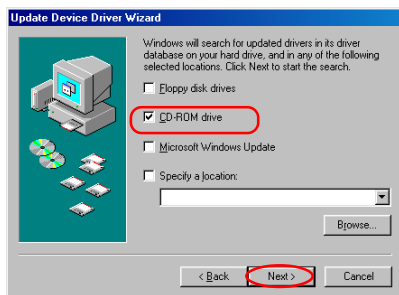
Step 5

The dialog shown below will be displayed. Select “Search for a better driver than the one your device is using now. (Recommended)” and click **Next**.



Step 6

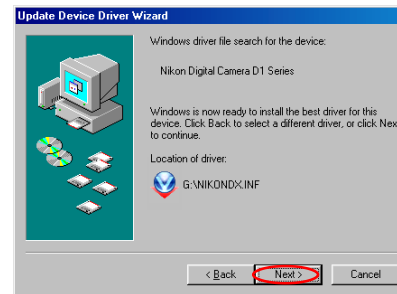
The dialog shown below will be displayed. Holding down the shift key to prevent the Welcome dialog from opening automatically, insert the Nikon View 5 CD into the CD-ROM drive. Select **CD-ROM drive** and click **Next**.



If the Welcome dialog appears when the CD-ROM is inserted, close the dialog by clicking the **Quit** button.

Step 7

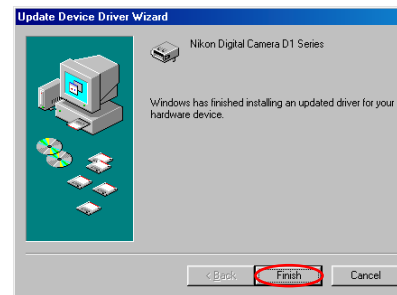
A dialog will be displayed stating that Windows has found the drivers for “Nikon Digital Camera D1 Series”; click **Next**.



If the message, “Windows was unable to find a suitable driver for this device,” is displayed, this may indicate that the Nikon View 5 CD was not correctly inserted in the CD-ROM drive or that the correct search location was not specified. Click **Back** to return to the dialog shown in Step 6 where you can confirm that the correct location has been specified.

Step 8

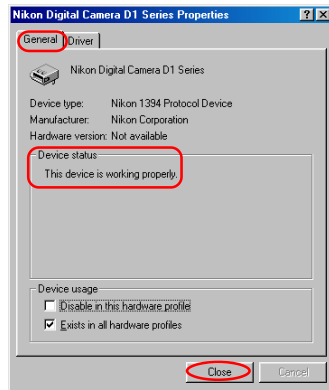
The dialog shown below will be displayed; click **Finish**.



If a message is displayed prompting you to restart Windows, click **Restart**.

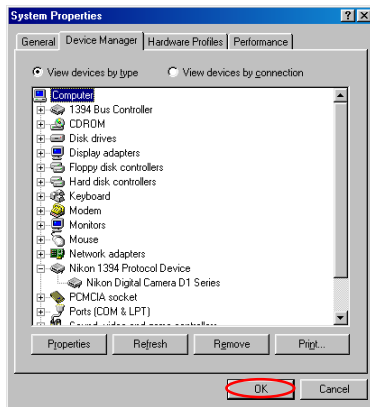
Step 9

Confirm that “This device is working properly” appears under “Device status” in the General Tab of the Nikon Digital Camera D1 Series Properties dialog. Click **Close**.



Step 10

Click **OK** to close the System Properties window.



Troubleshooting

- If “I394 Bus Controller” is not displayed in the Device Manager, if the IEEE 1394 board or card is listed under “Other Devices” or “Miscellaneous Devices,” or if the listing for the IEEE 1394 board or card is preceded by a red or yellow warning icon...

...the computer does not recognize the IEEE 1394 board or card. Refer to the documentation provided with your computer or IEEE 1394 board or card for information on registering the board or card with the system.

- If “I394 Bus Controller” is listed in the Device Manager but the entry for the Nikon D1 (D1x/D1H) does not appear...

...check the following

- Is the camera on?
- Is the battery fully charged? If you are using an AC adapter (available separately), is it properly connected?
- Is the mode dial set to “PC”?
- Is the IEEE 1394 cable properly connected?