

Updating Drivers for the D1 - Windows 2000 Professional-

For Users Who Are Already Using the D1 with Nikon View DX or Nikon Capture

If you are already using the D1 with Nikon View DX or Nikon Capture, you will need to update the camera drivers.

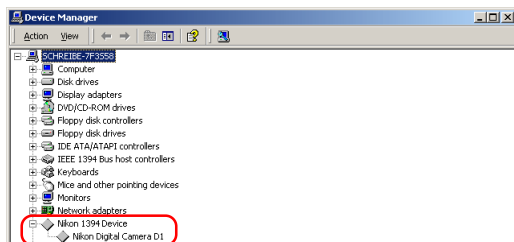
Step 1

Click the My Computer icon on the desktop with the right mouse button and select Properties from the menu that appears to display the System Properties dialog. Open the Hardware tab and click the **Device Manager...** button in the Device Manager section.



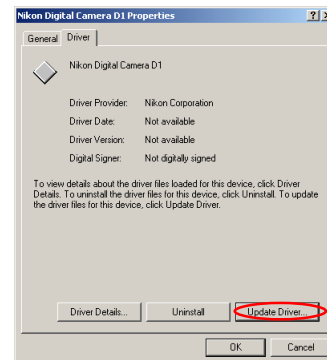
Step 2

The Device Manager will be displayed. Under the entry "Nikon 1394 Device," double-click "Nikon Digital Camera D1."



Step 3

The Nikon Digital Camera D1 Properties dialog will be displayed. Open the Driver tab and click **Update Driver...**



Step 4

The Windows update device driver wizard will be displayed; click **Next**.

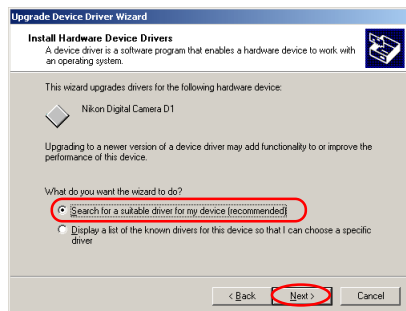


Log On

You will need to log on as "Administrator" to update the D1 drivers.

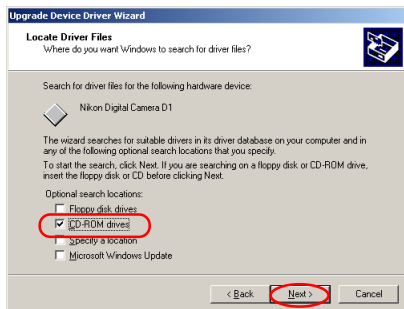
Step 5

The dialog shown below will be displayed. Select the search option and click **Next**.



Step 6

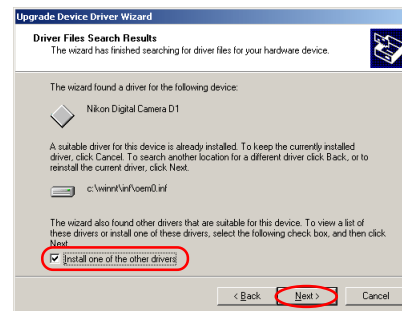
The dialog shown below will be displayed. Holding down the shift key to prevent the Welcome dialog from opening automatically, insert the Nikon View 5 CD into the CD-ROM drive. Select **CD-ROM drives** and click **Next**.



If the Welcome dialog appears when the CD-ROM is inserted, close the dialog by clicking the **Quit** button.

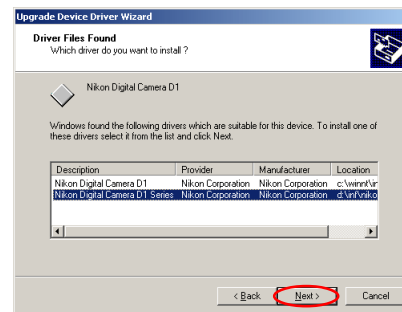
Step 7

The dialog shown below will be displayed. Select "Install one of the other drivers" and click **Next**.



Step 8

Select Nikon Digital Camera D1 Series from the dialog below and click **Next**.



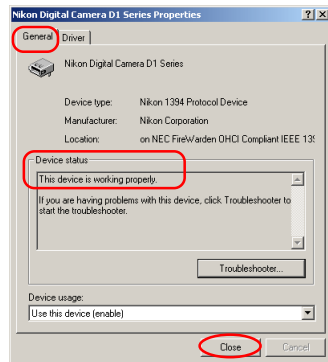
Step 9

The dialog shown below will be displayed; click **Finish**.



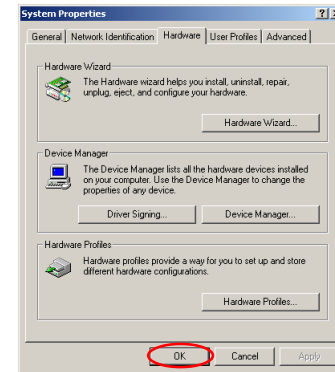
Step 10

Confirm that “This device is working properly” appears under “Device status” in the General Tab of the Nikon Digital Camera D1 Series Properties dialog. Click **Close**.



Step 11

Close the Device Manager; then click **OK** to close the System Properties window.



Troubleshooting

- If “I 394 Bus host Controller” is not displayed in the Device Manager, if the IEEE 1394 board or card is listed under “Other Devices” or “Miscellaneous Devices,” or if the listing for the IEEE 1394 board or card is preceded by a red or yellow warning icon...

...the computer does not recognize the IEEE 1394 board or card.

Refer to the documentation provided with your computer or IEEE 1394 board or card for information on registering the board or card with the system.

- If “I394 Bus host Controller” is listed in the Device Manager but the entry for the Nikon D1 (D1x/D1h) does not appear...

...check the following:

- Is the camera on?
- Is the battery fully charged? If you are using an AC adapter (available separately), is it properly connected?
- Is the mode dial set to “PC”?
- Is the IEEE 1394 cable properly connected?