

# Nikon Browser Reference Manual

---

*Overview* (Pp. 2–3)

*Using Nikon Browser* (Pp. 4–27)

*Preferences* (Pp. 28–37)

*Nikon Browser Menus* (Pp. 38–49)



# Nikon Browser — Overview

## Using Nikon Browser

Functions and Controls:

### Title Bar

Displays the name of the current folder.

### Toolbar

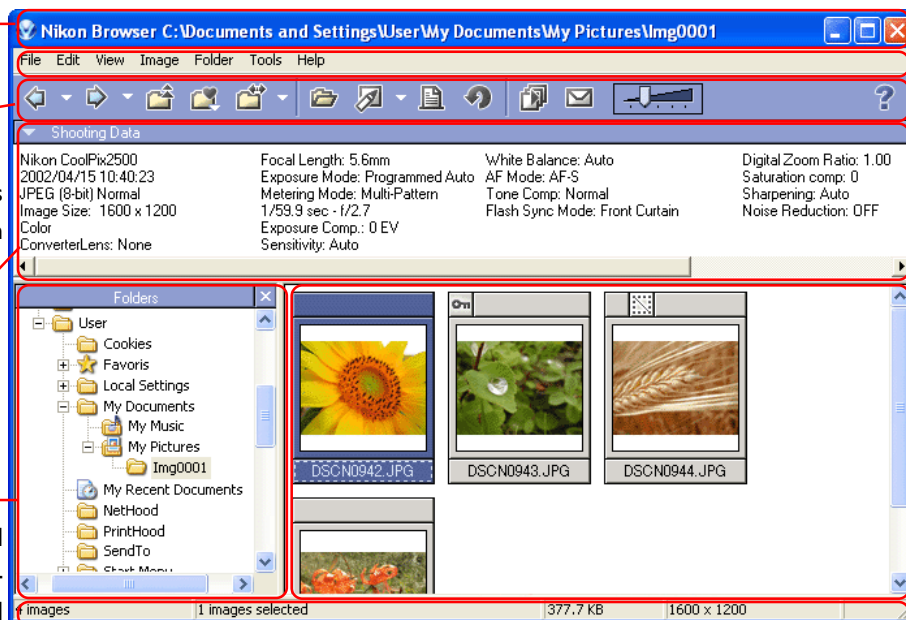
Contains buttons for operations that can be performed in Nikon Browser.

### Shooting data area

Displays shooting data for the selected image (🔍 12).

### Folder tree area

Allows you to choose a folder and display its contents in the thumbnail list area. Displays the drives and folders in the file system as a tree (🔍 4).



### Menu bar

Contains menus for the operations that can be performed in Nikon Browser.

### Thumbnail list area

Displays thumbnails for the images in the current folder (🔍 8).

### Status bar








Displays such information as the number of image files in the selected folder and the number of items selected in the thumbnail list.









## Menu Bar and Tool Buttons

The majority of operations in Nikon Browser are performed using the menu bar and tool buttons. In the case of operations that can be performed by means of both menus and tool buttons, the explanation in this manual gives priority to the tool buttons.

Nikon Browser contains the following buttons:

| Button   | Function   |
|--|--|
| <br>Back                 | Returns to the folder selected before the current folder (🔍 4).  |
| <br>Forward              | Returns to where you were when you clicked the <b>Back</b> button (🔍 4).   |
| <br>Up                   | Selects the folder one level higher than the current folder in the folder hierarchy (🔍 4).   |
| <br>Favorites            | Adds the selected folder to the Favorites or selects a folder from the list of Favorites (🔍 6).  |
| <br>Transfer Destination | Displays a list of 10 most recent destination folders for image files that were transferred using Nikon Transfer. When you select a folder from the list, the folder will be selected in the folder tree area (🔍 4). |
| <br>View                 | Opens the image file(s) selected in the thumbnail list area. Still images open in Nikon View. Movies open in the program designated in Preferences (🔍 15).   |
| <br>Edit               | Opens the image file selected in the thumbnail list area in the designated image editing program (🔍 17).   |

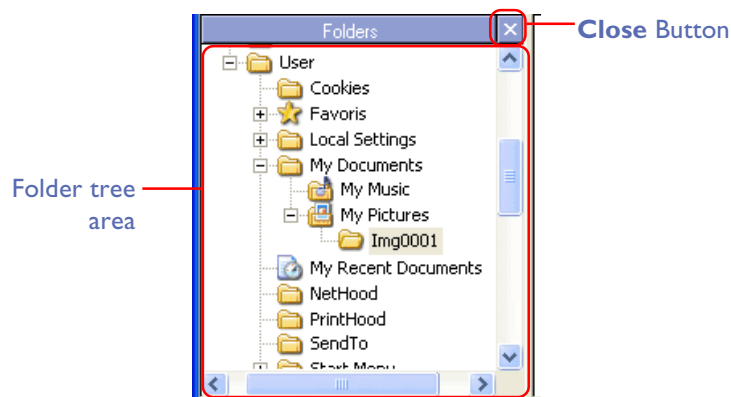
| Button   | Function  |
|--|---|
| <br>Print     | Prints the still image selected in the thumbnail list area (🔍 19).  |
| <br>Rotate    | Rotates the still image selected in the thumbnail list area. The thumbnail is rotated as well as the image itself (🔍 11). |
| <br>Slideshow | Plays back the image files selected in the thumbnail list area as a slideshow (🔍 22).                                     |
| <br>Mail      | Sends selected images by e-mail (🔍 26).   |
| <br>Slider   | Adjusts the display size of thumbnails. (🔍 9).  |
| <br>Help      | Displays help for Nikon View 5.   |

# Using Nikon Browser

## Working with folders

When you select a folder from the folder tree area, the thumbnails of image files in the folder are displayed in the thumbnail list area.

You can close the folder tree area by clicking the **Close** button in the upper right corner. To display the folder tree area again, select **View Folders** from the **View** menu.



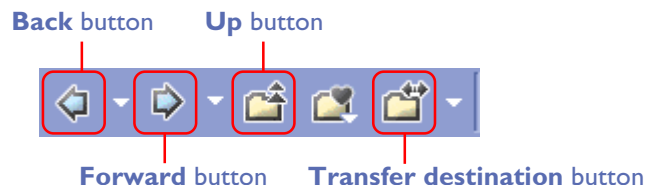
## Selecting a folder using the keyboard

In Windows, you can select a folder using the following keys instead of the tool buttons:

- **HOME** Selects the Desktop icon displayed at the root of the folder tree.
- **END** Selects the folder or drive displayed at the bottom of the folder tree area.
- **BACKSPACE** Selects the folder one level higher than the current folder in the folder tree.

## Choosing a folder

The folder tree area displays drives and folders in your computer as a tree from the desktop down. In the folder tree area, you can only select one folder at a time.



You can go back to the previous folder by clicking the **Back** button on the toolbar. You can also select from up to 10 previous folders by clicking the drop-down arrow on the right.

Use the **Forward** button to go back to where you were when you clicked the **Back** button. You can also select from up to 10 folders by clicking the drop-down arrow on the right.

Click the **Up** button to select a folder one level higher than the current folder in the folder hierarchy.

Click the **Transfer destination** button to view a list of 10 most recent destination folders for image files that were transferred using Nikon Transfer. When you select a folder from the list, the folder will be selected in the folder tree area.



## Opening folders in Explorer or Finder

In Windows, you can open a folder in Explorer by selecting a folder and selecting **Open with Explorer** from the **Folder** menu.

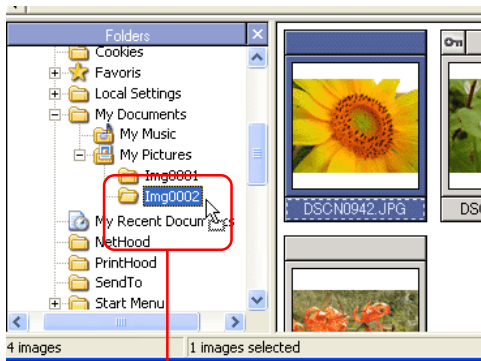
In Macintosh, you can open a folder in Finder by selecting a folder and selecting **Open in Finder** from the **Folder** menu.



# Moving image files

## Moving files between folders

You can move image files by dragging and dropping thumbnails from the thumbnail list area to a folder in the folder tree area.



Drag and drop

| Button                          | Windows      | Macintosh     |
|---------------------------------|--------------|---------------|
| Moving within the same drive    | Drop         | Drop          |
| Copying within the same drive   | CTRL + drop  | OPTION + drop |
| Moving between separate drives  | SHIFT + drop | —             |
| Copying between separate drives | Drop         | Drop          |



### Creating and deleting folders in the folder tree area

You cannot create or delete folders in the folder tree area. If a folder is created in a program other than Nikon View 5, the display of the folder tree area is refreshed when Nikon View 5 is notified by the system that a new folder was created (Windows), or when the user selects **Refresh** from the View menu (Macintosh).

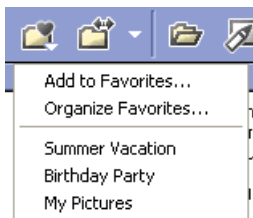


### Deleting folders (Windows)

To delete a folder, select the folder one level higher than the folder you want to delete. The folder you want to delete will be displayed in the thumbnail list area. Select the folder, then select **Delete** from the **File** menu.

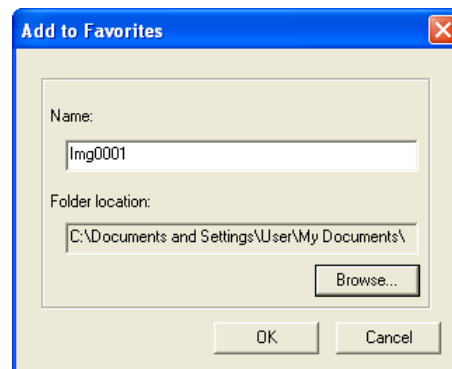
## Adding folders to Favorites

In Nikon Browser, you can add folders containing transferred images to Favorites. Folders to be added to Favorites can be selected using either the **Favorites** tool button or the **Favorites** option in the **Folder** menu. Up to 30 folders can be listed in Favorites.



## Add to Favorites

To add a folder to Favorites, use the folder tree area to select the desired folder, then click the **Favorites** button on the toolbar. You can also select **Favorites > Add to Favorites** from the **Folder** menu. The **Add to Favorites** dialog box will be displayed.



### Name

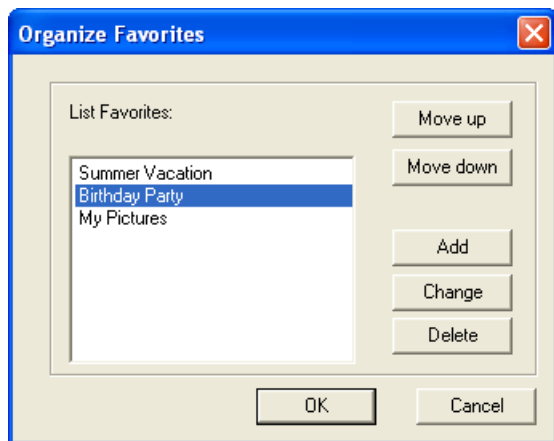
Displays the name of the folder to be added to favorites.

### Folder location

Displays the location of the folder to be added to favorites. If you want to specify a different folder, click **Browse**. The name of the new folder will be displayed automatically under Name. Click **OK** to register the selected folder.

## Organize Favorites

To organize folders within Favorites, click the **Favorites** button on the toolbar, or select **Favorites > Organize Favorites** from the **Folder** menu. The **Organize Favorites** dialog box will be displayed.



## List Favorites

The folders that have been added to Favorites are displayed in the list.

## Move up / Move down

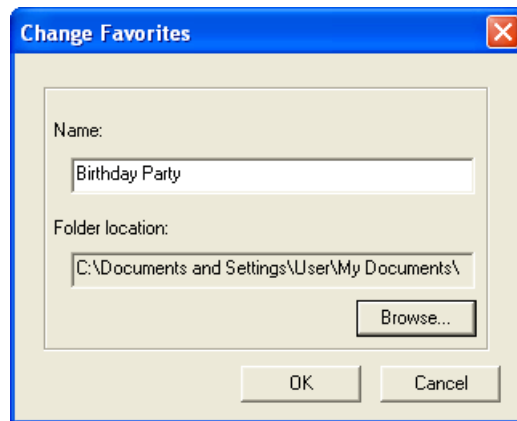
Click to move the selected folder in **List Favorites** up and down. The folders will be displayed in **Folder > Favorites** in the order you specify in this list.

## Add

Click to display the **Add to Favorites** dialog box. In this dialog box, you can add folders to the Favorites.

## Change

Click to display the **Change Favorites** dialog box.



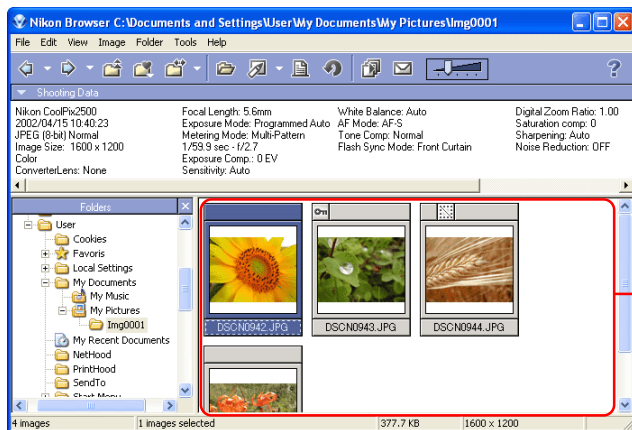
In this dialog box, you can change the name of folders listed in Favorites. This does not affect the name of the original folder.

## Delete

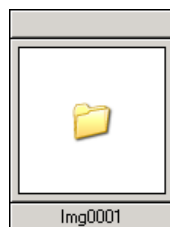
Click to remove the selected folder from Favorites. The original folder is not deleted from your computer.

## Working with thumbnails

The thumbnail list area displays thumbnails for all images stored in the selected folder.



Note also that a folder icon is displayed in the thumbnail list area if the current folder contains a subfolder(s) (Windows version only).



To display the contents of the folder in the thumbnail list area, select the folder icon in the thumbnail list area and click the **View** button on the toolbar. The folder will be selected in the folder tree area.

## Thumbnail display

Sometimes, a generic file icon is displayed instead of a thumbnail in the thumbnail list area. This is because some image editing programs remove the thumbnail data appended to the image file.



If this happens, select the **Re-create thumbnails from actual image data** check box in the **Thumbnails** tab (31) of the **Preferences** dialog box. Nikon View 5 will then create high resolution thumbnails from the image data. The new thumbnails will be displayed in the thumbnail list area.









## Changing the thumbnail size

Thumbnails can be displayed in any one of five sizes. Adjust thumbnail size using the slider on the toolbar, the **View Size** option in the **View** menu, or by rotating the mouse wheel (if available).



Slider

The following five sizes are available:

|         |   |                  |
|---------|---|------------------|
| Minimum |  | 64 × 64 pixels   |
| Small   |  | 96 × 96 pixels   |
| Normal  |  | 128 × 128 pixels |
| Large   |  | 192 × 192 pixels |
| Maximum |  | 256 × 256 pixels |

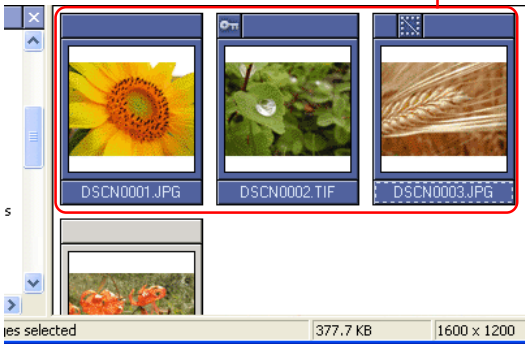
## Selecting thumbnails

Thumbnail previews of the images in the selected folder are shown in the thumbnail list area. Click a thumbnail to select it.

To select multiple thumbnails, hold down the CTRL key (Windows) or the Command key (Macintosh) while clicking on each of the thumbnails.

You can also drag the mouse and select multiple thumbnails.

Selected thumbnails

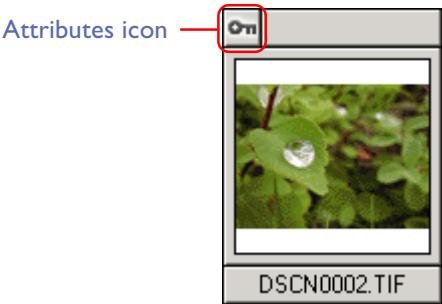






### Selecting Multiple Images

You can use the **Select** option in the **Edit** menu to select all images that have the same attribute set in the camera, such as protected/unprotected images or and hidden images (Windows version only).

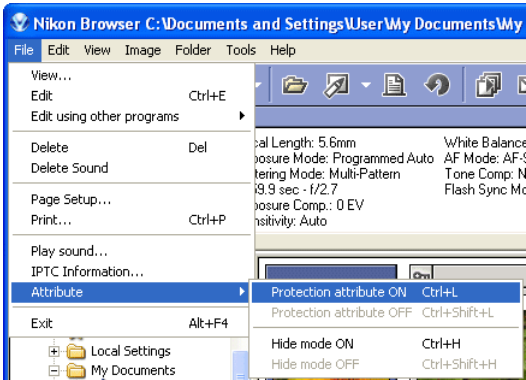
Thumbnail attributes

Each thumbnail displayed in the thumbnail list area has an icon that represents its attributes. There are four types of icon: **Protection**, **Hide** (Windows version only), **Movie** and **Voice memo**.



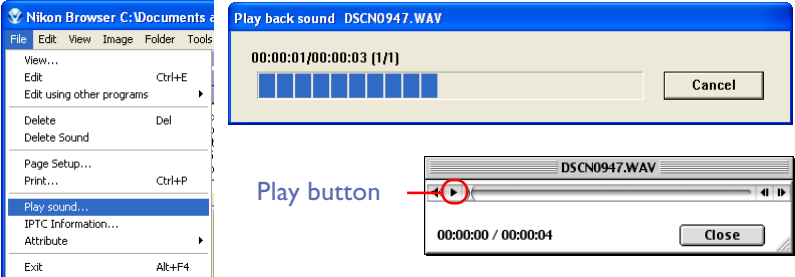
| Icon  | Description  |
|---|--|
| <br>Protection | Image is protected.  |
| <br>Hide       | Image is hidden and will not be displayed in Windows Explorer. |
| <br>Movie      | Image is a movie file.   |
| <br>Voice memo | Voice memo is attached to image.                               |

You can also protect (Windows and Macintosh) or hide (Windows only) images associated with the selected thumbnail by selecting **Attribute** from the **File** menu. Protecting an image prevents it from accidental deletion. Hiding an image prevents it from being shown in Explorer.



Playing voice memos

To play a voice memo, select an image marked with the voice memo icon, and select **Play Sound** from the **File** menu. Under Windows, the voice memo will be played back in the application specified in the **Sound** tab (37) of the Preferences dialog box.

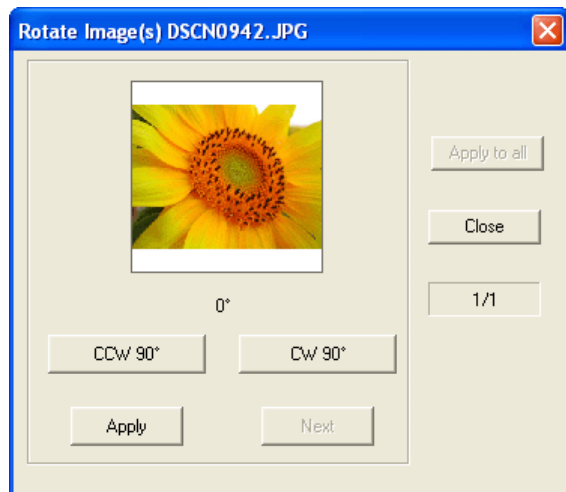


On a Macintosh, click the play button to start playback.

## Rotating thumbnails

In the thumbnail list area, you can rotate selected thumbnails. The rotation applied to a thumbnail is also reflected in the associated image file. Use the **Rotate Image(s)** dialog box to rotate thumbnails.

To display the **Rotate Image(s)** dialog box, click the **Rotate** button on the toolbar, or select **Rotate** from the **Image** menu.



In the **Rotate Image(s)** dialog box, click **CCW90°** to rotate the thumbnail 90 degrees counterclockwise or **CW90°** to rotate 90 degrees clockwise. Click the same button twice if you want to rotate the thumbnail 180 degrees. You can check the results in the preview area.

### *When one thumbnail is selected*

Click **Apply** to rotate both the thumbnail and the associated image file and then close the dialog box.

### *When multiple thumbnails are selected*

Click **Apply** to rotate both the thumbnail and the associated image file and then display the next thumbnail.

You can move on to the next thumbnail without rotating the current thumbnail by clicking **Next**.

Click **Apply to all** to apply the orientation of the current thumbnail to all the selected thumbnails and the associated image files. Rotation is not applied to the hidden files and files that have already been rotated.



### Rotating movies

Movies cannot be rotated. If a movie file is included among the selected thumbnails, the movie file is not displayed in the **Rotate Image(s)** dialog box.

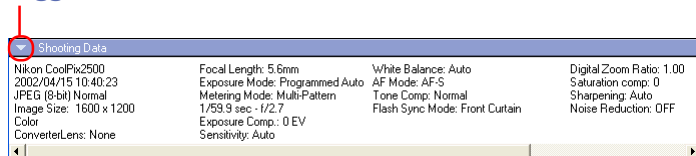


## Displaying shooting data

When a picture is taken, information, (such as the state of the camera, images settings and date of shooting), is stored within a separate window between the image area and the menu bar. Shooting data can be copied to the IPTC area of the file using the appropriate option in Nikon Transfer. No shooting data is displayed if no thumbnail is selected or if multiple thumbnails are selected.

You can show or hide the shooting data by selecting **View Shooting Data** from the **View** menu. You can also expand or collapse the **Shooting Data** area by clicking the toggle button (a small triangle) in the upper left corner.

### Toggle button



Shooting Data area expanded



Shooting Data area collapsed

The information displayed includes the following items. Available information varies according to the model of the camera.

Camera Name / Date and Time / Image Quality /  
Image Size / Color / Converter Lens / Lens / Focal Length /  
Exposure Mode / Metering Mode / Shutter Speed, Aperture /  
Exposure Compensation / Sensitivity / White Balance /  
AF Mode / Tone Compensation / Flash Sync Mode /  
Flash Mode / Auto Flash Comp. / Digital Zoom Ratio /  
Saturation Control / Color Mode / Hue Adjustment /  
Image Sharpening /  
Noise Reduction / Image Description / Latitude (GPS) /  
Longitude (GPS) / Altitude (GPS)



### Shooting data

Depending on the image file type, it may not be possible to display shooting data after saving images in some image editing applications.

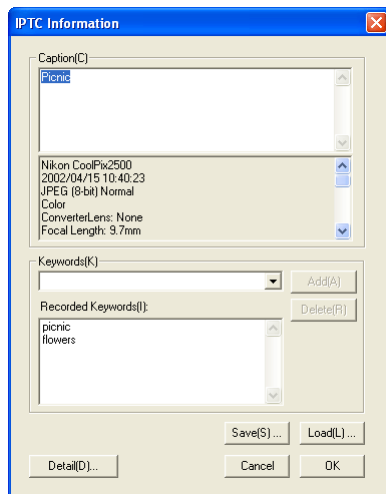


## Viewing file information

In Nikon Browser, you can use the **IPTC Information** dialog box to view the file information added to an image file during transfer.

### Displaying the IPTC Information dialog box

To open the **IPTC Information** dialog box, select a thumbnail in the thumbnail list area and click **IPTC Information** (Windows) or **File Information** (Macintosh) on the **File** menu.



Simple mode

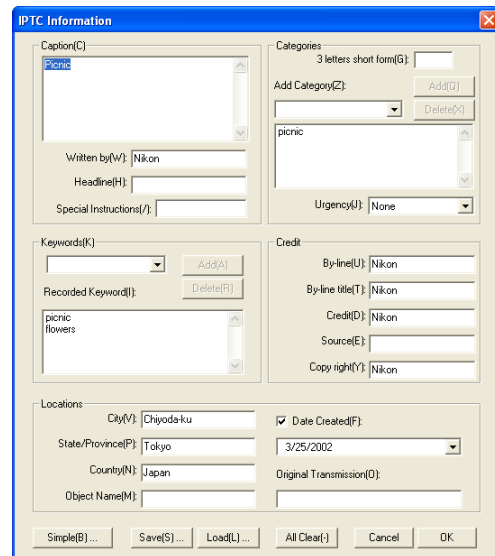
In the lower part of the **Caption** area in the **IPTC Information** dialog box, the shooting data added to the image file during transfer is displayed.



### Registering shooting data

Shooting data is added to the image file during transfer when the **Copy Shooting data (Shutter speed etc...)** to the IPTC caption field check box in the **Transfer** tab (📷 Nikon Transfer) of the **Transfer options** dialog box is selected.

You can view the **IPTC Information** dialog box in Simple or Detail mode. Click the **Simple/Detail** button to toggle between Simple and Detail mode.



For more information on the **IPTC Information** dialog box, see “Step 4: Add additional file information” in 📷 “Tutorial: Nikon Transfer.”

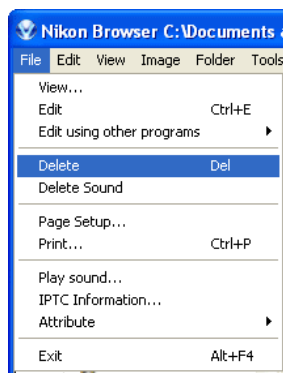


### File information from Nikon Browser

IPTC information displayed in Nikon Browser cannot be edited. Note that there is no file information attached to movies.

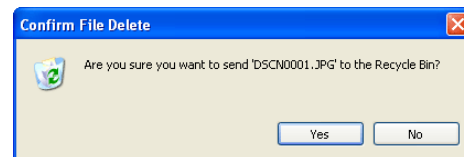
## Deleting image files

To delete image files in Nikon Browser, select the associated thumbnails in the thumbnail list area and select **Delete** from the **File** menu.

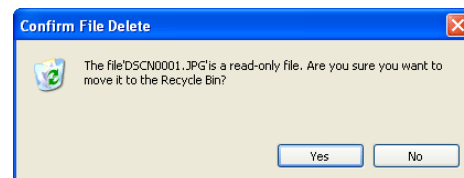


You can attain the same results by pressing the DELETE key (Windows) or COMMAND + DELETE keys (Macintosh).

The following dialog will appear confirming the deletion. Click **Yes** to go ahead with the deletion.



If there are any protected images among the images selected for deletion, the dialog shown below will appear. Click **Yes** to go ahead with the deletion.



If a folder thumbnail is displayed in the thumbnail list area, you can select the folder to delete the folder and all its contents (Windows version only).

---

### Deleted image files

---

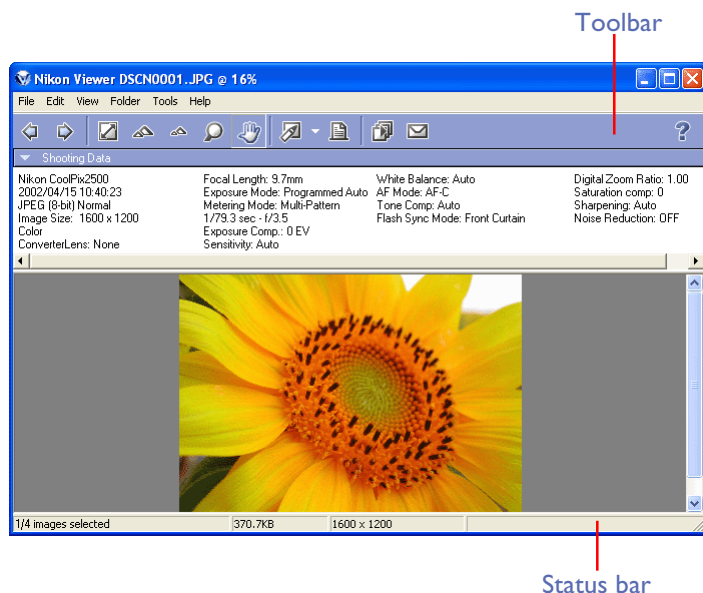
Deleted image files are moved to the Recycle Bin (Windows) or the Trash (Macintosh). To cancel the deletion, open the Recycle Bin or the Trash and put the deleted files back to the original location. In Windows, if you delete image files from a memory card inserted in the camera, card slot, or card reader, or from a network folder, the image files are permanently erased and cannot be recovered.

## Displaying Images

When you select a thumbnail in the thumbnail list area, still images are displayed in Nikon Viewer while movie files are played back in the program selected in the **Movie** Tab of the **Preferences** dialog box (🔍 35).

## Viewing still images

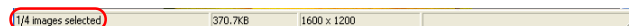
To view a still image, double click its thumbnail in the thumbnail list area. Nikon Viewer launches and displays the image.



## Displaying images in Nikon Viewer

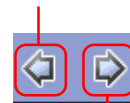
Images opened in Nikon Viewer can only be displayed one at a time. If multiple thumbnails are opened, only one image is displayed. Use the **Forward** and **Back** buttons to display other images.

You can use the Nikon Viewer status bar to check the number of opened images and the status of the currently displayed image.



You can change the displayed image using the **Forward** and **Back** buttons on the toolbar of Nikon Viewer.

Back button



Forward button

In Windows, even if you open only one thumbnail in the thumbnail list area, you can browse through all the still images stored in the same folder as the selected image by using the **Forward** and **Back** buttons.



## Other ways of viewing images

You can also open an image in Nikon Viewer by:

- selecting its thumbnail, and clicking the **View** button on the toolbar or selecting **View** from the **File** menu.
- selecting its thumbnail and pressing the ENTER key (Windows) or the RETURN key (Macintosh).




## Image Editing Programs

To edit a still image, select its thumbnail and click the **Edit** button on the toolbar or select **Edit** from the **File** menu. This will launch the Image Editing Program specified in the Still image tab (🔍 33) of the **Preferences** dialog box.




## Playing back movies

To play back a movie, double click its thumbnail in the thumbnail list area. The application specified in the **Movie** tab (  35) of the **Preferences** dialog box launches and plays back the movie.



## Installing QuickTime

In Windows, you cannot use Windows Media Player to play back movies recorded with the COOLPIX series digital cameras. If a movie player program is not installed, install the version of QuickTime bundled with Nikon View 5 (COOLPIX series only).

For more information on installation, see  *Nikon View 5 Installation Guide*.




### Other ways to play back movies

You can also play back a movie by:

- selecting its thumbnail, and clicking **View** button on the toolbar; or select **View** from the **File** menu.
- selecting the thumbnail and pressing the ENTER key (Windows) or the RETURN key (Macintosh).



### Program to edit movies

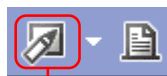
To edit a movie, select its thumbnail and click the Edit button on the toolbar or click Edit on the File menu. This will launch the program specified in the **Movie** tab (  35) of the **Preferences** dialog box.





## Editing image files

Select a thumbnail, then click the **Edit** button on the Toolbar, or select **Edit** from the **File** menu to display the selected image in the Image editing program specified in the **Preferences** dialog box.

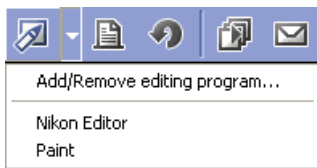


Edit button

If you have not yet specified or registered an image editing program, the **Add/Remove editing program** dialog box will appear automatically. To open the dialog box on subsequent occasions, see the instructions on the next page.

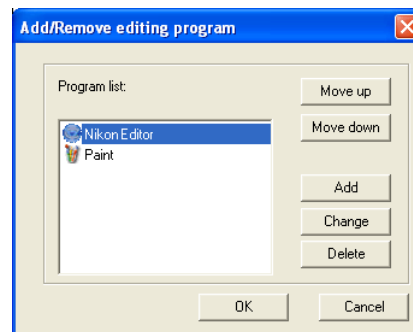
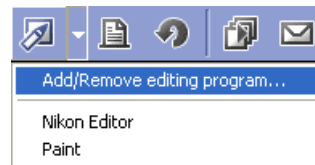
## Registering image editing programs

The **Add/Remove editing program** dialog box allows you to register (and also to remove) the image editing programs of your choice. Click **Add** to register an image editing program. Registering additional editing programs allows you to use an editing application other than the program specified in the **Preferences** dialog. Open registered editing programs by using the **Edit** button pull down menu, or by selecting **Edit using other program** from in the **File** menu.

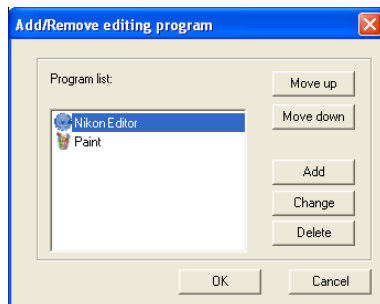


## Displaying the Add/Remove editing program

The **Edit** button pull down menu and the **Edit using other program** option can also be used to display the **Add/Remove editing program** dialog box.



## Add/Remove editing program



### Program list

The registered programs are displayed in the list.

### Move up / Move down

Click to move the selected program in the **Program list** up and down. You can modify the order of the registered programs that are displayed by clicking the **Edit** tool button or selecting **Edit using other programs** from the **File** menu.

### Add

Click to display the **Add program** dialog box. In the **Add program** dialog box, you can select and register programs.

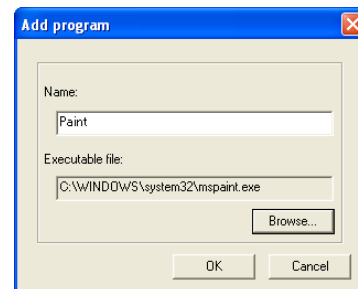
### Change

Click to display the **Change program** dialog box. In the **Change program** dialog box, you can change the name of the registered programs.

### Delete

Click to remove the selected program from the **Program list**. Note that the program itself is not deleted.

## Add program



### Name

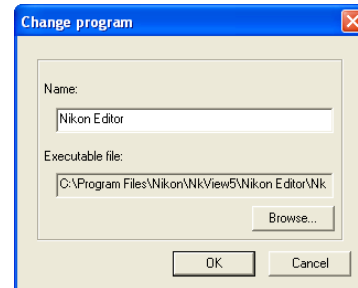
You can assign a name to the program selected in **Executable file**. The program is added to the **Program list** with this name instead of the actual program name.

### Executable file

Displays the path and file name of the program to add.

To add a different program to the **Program list**, click **Browse** and select the program you want to add. Click **OK** to add the selected program to the **Program list**.

## Change program



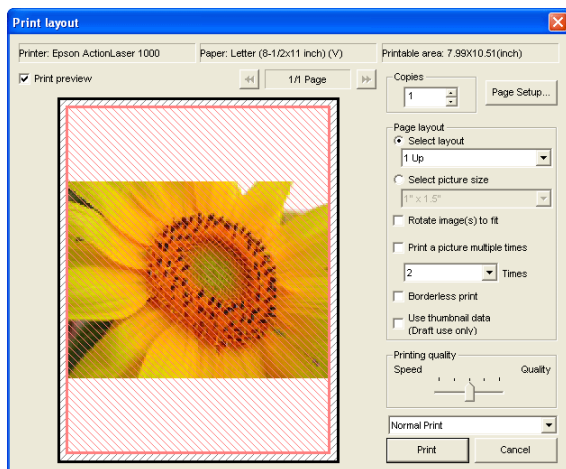
In the **Change program** dialog box, you can change the name of the program that appears in the **Edit** tool button pull down menu, and in the **Edit using other programs** submenu. This does not affect the name of the original program.

## Printing images

Nikon Browser allows you to print;

- i) A single image
- ii) Multiple copies of the same image
- iii) An index (catalog) print made up of several different images

To select an image for printing, click the image once. To select more than one image, click each image once while holding down the shift key. After selecting the desired images, click the Print button. The Printer layout dialog appears, allowing the specific printer and various layout, print and paper sizes to be chosen.



When you have made all the necessary settings, click **Print** to start printing.

Clicking **Cancel** closes the **Print layout** dialog box without printing.

## Print layout

### Printer / Paper / Printable Area

|                       |  |
|-----------------------|--|
| <b>Printer</b>        | Displays the name of the currently selected printer.     |
| <b>Paper</b>          | Displays the currently selected paper size.              |
| <b>Printable Area</b> | Displays the printable area for the selected paper size. |

### Print preview

Select this check box to display a preview of the current image printed by the currently selected printer.

### Copies (Windows only)

Specify the number of copies to print. You can print anywhere from 1 to 100 copies.

If you are using a Macintosh, specify the number of copies to print in the dialog box that appears after you click **Print**.

### Page Setup

Click to display the **Printer settings** dialog box in which you can modify the printer and paper settings. If you are using a Macintosh, a different **Printer settings** dialog box will appear for each printer in use. The changes made are reflected in the **Printer**, **Paper**, and **Printable area** fields, above.

Page layout area

Choose from either **Select layout** or **Select picture size**.

Select layout

Select this option if you want to select the number of images to print on one page from the list.

| Number of images per page | Paper Orientation                  |                         |
|---------------------------|------------------------------------|-------------------------|
|                           | (portrait)                         | (landscape)             |
| 1                         | 1 in the center                    | 1 in the center         |
| 2                         | 2 pictures one on top of the other | 2 pictures side by side |
| 4                         | 2 rows × 2 columns                 | 2 rows × 2 columns      |
| 8                         | 4 rows × 2 columns                 | 2 rows × 4 columns      |
| 16                        | 4 rows × 4 columns                 | 4 rows × 4 columns      |
| 25                        | 5 rows × 5 columns                 | 5 rows × 5 columns      |

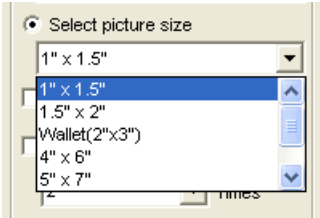
You can specify whether or not to print image information together with images. You can also print a list of image information. The size of the images are automatically adjusted according to the layout.

The following information is printed when you select image information:

- File Name
- Image Size
- White Balance
- Camera Name
- Shutter Speed
- Date
- Exposure / Aperture
- Compensation

Select picture size

Select this option if you want to select the size of the image from the list.



Selecting this option also enables you to rotate the image to adjust the margin or print the same image multiple times.

Rotate image(s) to fit

Select this check box to automatically rotate each image so as to minimize the unused space inside each image frame.

Print a picture multiple times

To print an image the desired number of times, select this check box and select a number from between two and ten from the pull down menu.

Borderless print

Select this check box to adjust the image size so that it fits exactly inside the red border, without leaving any white space. If the aspect ratio of the box and the image differ, part of the image may not be printed.

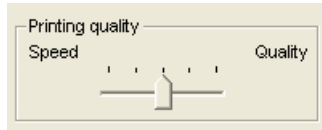
Use the slider to adjust the balance between the speed and quality of printing.

Use thumbnail data (Draft use only)

Select this check box to print thumbnail images.

### Printing quality

Use the slider to adjust the balance between speed and quality.



### Speed

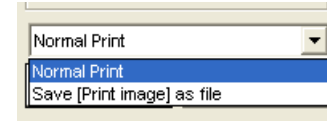
Dragging the slider towards **Speed** reduces printing time, but also reduces the quality of the printed image.

### Quality

Dragging the slider towards **Quality** increases printing time, but also increases the quality of the printed image.

### Normal Print / Save [Print Image] as file

Select whether to print images on a printer, or whether to save images as a single JPEG file.



### Print

Outputs the selected images to a printer.

### Save [Print Image] as file

Saves the selected image(s) as a JPEG file in the layout specified under Page Layout. The Save Image(s) dialog box will appear. Select a location to which the images will be saved. When saving images, Image Quality can be set to Maximum, High, Medium or Low.

## Playing a slideshow

In Nikon Browser, you can view the image files associated with the selected thumbnails as a slideshow.

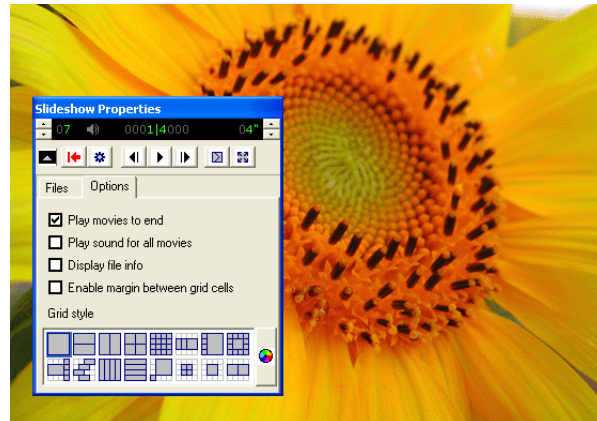
### Displaying the Slideshow Properties dialog box

To view a slideshow, select the thumbnails of the image files you want to view in the thumbnail list area, then click the **Slideshow** button on the tool bar or select **Slideshow** from the **Tools** menu.



Slideshow button

The slideshow window is displayed with the **Slideshow Properties** dialog box displayed in front of the slides. You can change the slideshow settings using this **Slideshow Properties** dialog box.



You can show or hide the **Slideshow Properties** dialog box by pressing the TAB key.



### When one thumbnail is selected

In Windows, if you select only one thumbnail in the thumbnail list area, all the images in the same folder are played back in the slideshow.

In Macintosh, only the selected images are played back in the slideshow.



### Slideshow

Slideshow technology licensed from iView Multimedia Ltd (c) 2002.

## Setting the Slideshow Properties dialog box

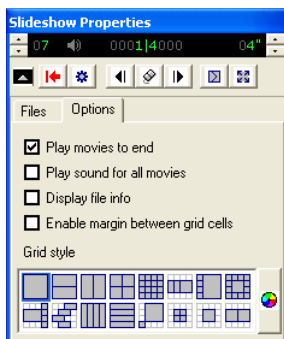
### Files tab

Displays a list of file names (and in Windows, file paths) of the image files that are currently displayed in the slideshow.



### Options tab

Use this tab to set how each slide is displayed.



### Play Movies to end

Select this check box to play the movie to the end before showing the next slide. If you clear this check box, the next slide is shown after the specified time even if the movie has not finished.

### Play Sound for all movies

Select this check box to play back sound with all the movie files included in the slideshow.

### Display File Info

Select this check box to display the file location, size, and zoom ratio under each slide.

### Enable margin between grid cells

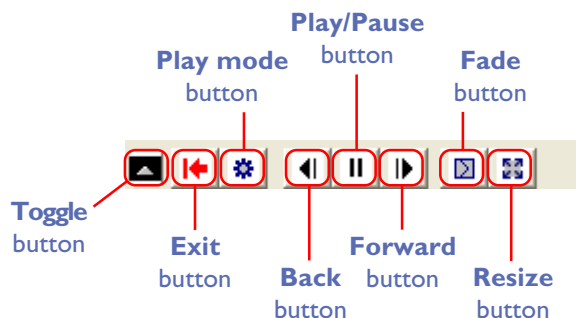
If you selected a stage grid option that displays multiple slides at the same time, selecting this check box creates margins between slides. Clear this check box to remove the margins.

### Grid style

Select the format and number of slides to display at the same time.

## Using the toolbar

The toolbar has buttons to control the playback of the slideshow, and buttons to specify how the slides are displayed.



### Toggle button

Toggles between the slides and the options tab.

### Exit button

Exits the slideshow

### Play mode button

Use this button to set how to play back the slideshow.

Select **Interactive** to switch slides interactively by clicking the mouse button.

Select **Continuous** to play the slideshow again after the last slide is displayed.

Select **Random** to play the slideshow in random order.

### Back button

Displays the previous slide.

### Play/Pause button

Pauses the slideshow when playing or starts it again when paused. When you select **Interactive** in the **Play mode** button, the button icon takes the shape of a computer mouse, on which you can click to display the next slide.



### Forward button

Displays the next slide.

### Fade button

Use this button to select how one slide fades into or out of another.

### Resize button

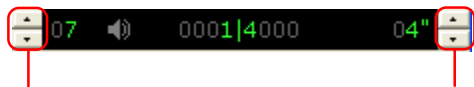
Use this button to select the zoom ratio of the slides. You can also adjust the aspect ratio, or adjust the size of the slides to fit the screen.



## Status bar

You can control the sound volume on the status bar. You can also check the number of the remaining slides and the total number of slides.

You can also specify the interval between slide changes, in the range of 1 to 60 seconds.



Volume control

Time display control

## Switching the Slideshow Properties dialog box display

You can expand or collapse the **Slideshow Properties** dialog box by clicking the **Toggle** button on the toolbar.



Slideshow Properties  
dialog box  
(collapsed)

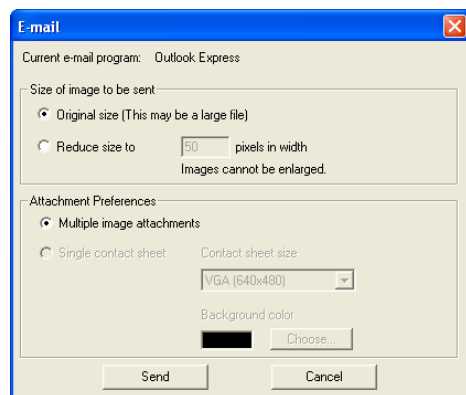
Toggle button

## E-mailing images

Images displayed in the thumbnail list area can be sent by e-mail. To send images, click the Mail button on the tool bar or select E-mail from the Tools menu.



Settings, including the size of the image to be e-mailed, can be adjusted in the E-mail dialog box.



## Using e-mail

In order to use Nikon View 5's e-mail function, your computer must be correctly configured to send e-mail. Note that you may incur charges from your internet service provider and telephone company when you send e-mail.



## Voice memo

Voice memos attached to Exif files can not be sent by e-mail.

## Current e-mail program

When you click **Send** (see next page), your e-mail will be sent using the program shown here.

Current e-mail program: Outlook Express

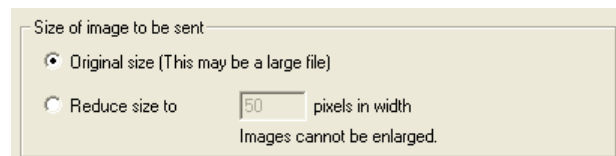
## Size of image to be sent

### Original size

The selected image will be e-mailed as it is, without any alteration in image size.

### Reduce size to

If you select **Reduce size to**, you can specify the size of the image in pixels. The value entered will be applied to the longer side of the image. The shorter side of the image is then adjusted automatically to preserve the aspect ratio.



## Supported e-mail programs

### Windows

Outlook Express, Outlook, Eudora\* (\*except Windows XP)

### Macintosh OS 9.0, 9.1, 9.2

Outlook Express, Eudora, Entourage

### Mac OS X

Outlook Express, Entourage X, Mail



## Attachment Preferences

Specify the image files you want to send as an attachment to an e-mail.

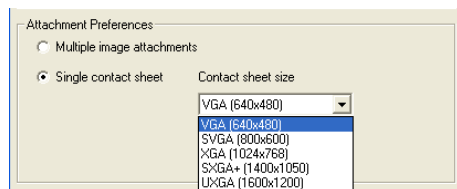
### Multiple image attachments

Each selected image will be sent as an individual attachment.

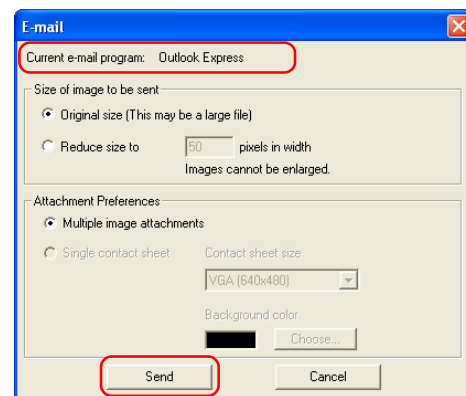
### Single contact sheet

If you selected **Reduce size to** in the Size of image to be sent area, you can create a "contact sheet" where all the selected images are included in the same attachment. If you selected **Original Size**, this option is not available. You can use the pull-down menu to select the size of the contact sheet. Choose one of the following options:

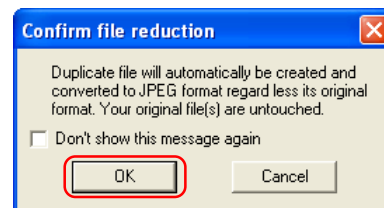
VGA (640 × 480), SVGA (800 × 600), XGA(1024 × 768), SXGA+ (1400 × 1050), UXGA (1600 × 1200).



Click **Choose** and use the color palette to select the background color of the contact sheet.

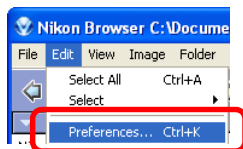


Click **Send** to start up the application specified in the E-mail program field. If you are e-mailing images at a reduced size, or if you are e-mailing images that are not in JPEG format, the dialog box shown below will be displayed, informing you that the images you are sending will be compressed into JPEG format. Click **OK** to close the dialog and e-mail your images.

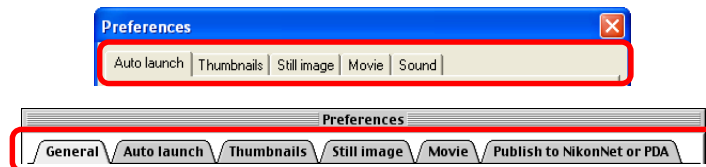


## Displaying the Preferences dialog box

To display the **Preferences** dialog box, select **Preferences** from the **Edit** menu. Preferences can also be displayed in Nikon Viewer. You cannot display the dialog box from within Nikon Transfer or Nikon Editor.



The **Preferences** dialog box contains the following tabs: **General** (Macintosh version Only), **Auto launch**, **Thumbnails**, **Still image** and **Movie**, **Sound** (Windows version Only).



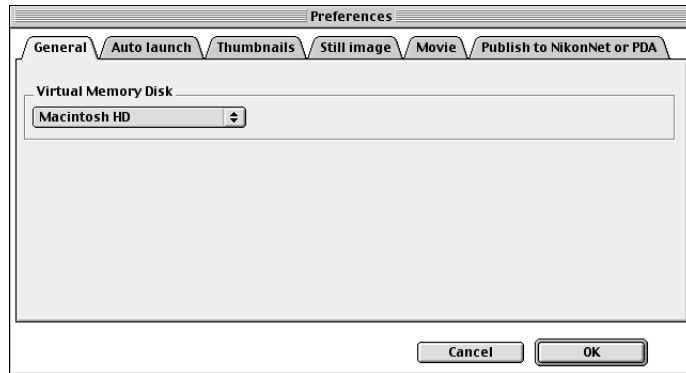
Changes to the settings in the **Preferences** dialog box only take effect when you confirm the changes by clicking .

Click **Cancel** to close the **Preferences** dialog box and keep the original settings.

# The General Tab (Macintosh only)

## Temporary data storage settings

Temporary image data will be stored to the folder specified in the **General** tab.

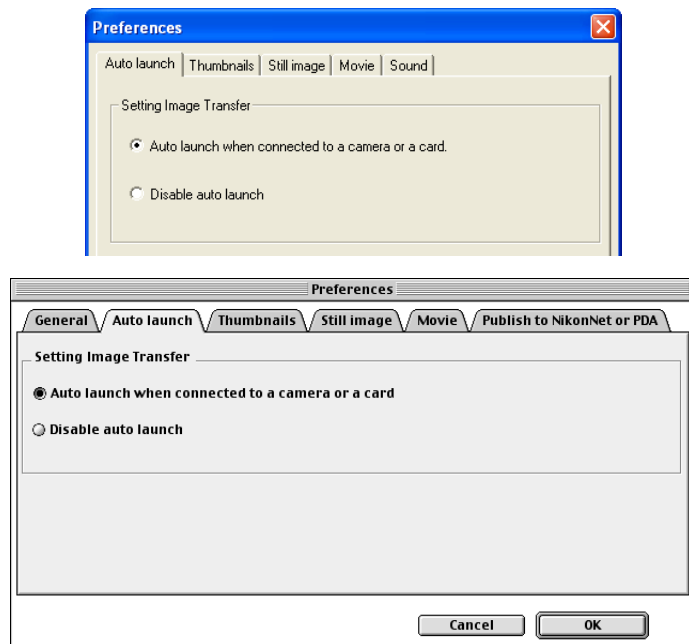


Use the pulldown menu in the general tab to select the drive which will be used to store cache and other temporary image data. The default setting is the Virtual Memory Disk specified by the operating system.

# The Auto Launch Tab

## Nikon Transfer launch settings

In the **Auto launch** tab, you can set how you want Nikon Transfer to launch.



### *Auto launch when connected to a camera or a card*

Select this option to launch Nikon View 5 automatically when you turn the camera on and connect it to your computer or when you insert the memory card into the card reader or card slot. When Nikon View 5 launches, it displays Nikon Transfer.

### *Disable auto launch*

Select this option if you do not want Nikon Transfer to launch automatically when a camera is connected or a memory card is inserted.



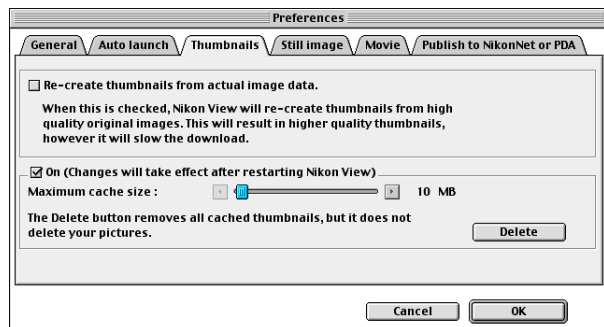
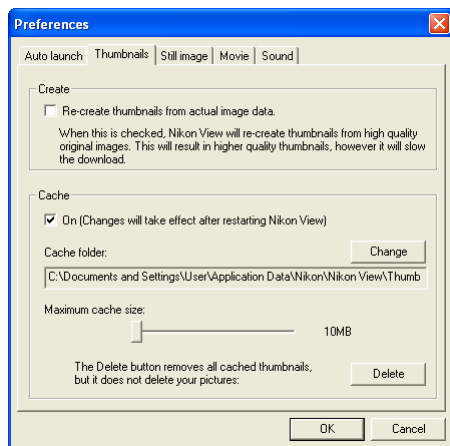
### The Disable auto launch option in Windows XP

In Windows XP, the **Disable auto launch** option is effective only with the D1/D1x/D1H and COOLPIX990/880 cameras. When other cameras are connected, the **Disable auto launch** option is ignored and Nikon Transfer launches automatically.

# The Thumbnails Tab

## Thumbnails data settings

When the camera records an image, a large thumbnail is created from the original image data and is included with the image file. Normally, this thumbnail is used as the source for the display of all thumbnails regardless of size. If this data is missing, (for example, after editing with a program that removes everything but the original image data), thumbnails may be replaced by a generic file icon. In such cases, Nikon View can revert to the original image data to re-create thumbnail images.



## Create

### Re-create thumbnails from actual image data

If the thumbnail is not shown (and is replaced by a generic icon), or if the thumbnail is of too low a resolution, select this check box to regenerate a high quality thumbnail from the original image data.

If this check box is cleared, then the thumbnail data present in the image file is used for display. If there is no thumbnail data, the operating system's generic file icons may appear in the thumbnail list area.

# The Thumbnails Tab (cont.)

---

## Cache

---

### *Use cache*

If you select this check box, thumbnails that have already been displayed in Nikon Browser will be created from the cache data, decreasing the amount of time needed to display the thumbnails.

### *Cache folder*

The cache folder field specifies the location to which cache files will be saved. If you wish to change the location, click **Change** and specify a new location.

### *Maximum cache size slider*

Use the slider to set the maximum size of the cache file. The maximum size can be set in the range of 10 MB to 100MB, at 10 MB intervals. If you reduce the maximum cache size, the current cache data will be deleted (Windows only).

### *Delete all thumbnails saved in cache*

If you select this check box, the thumbnails saved to the cache will be deleted every time Nikon Browser restarts.



## Cache settings

---

Changes to cache settings are not put into effect until Nikon Browser is restarted.

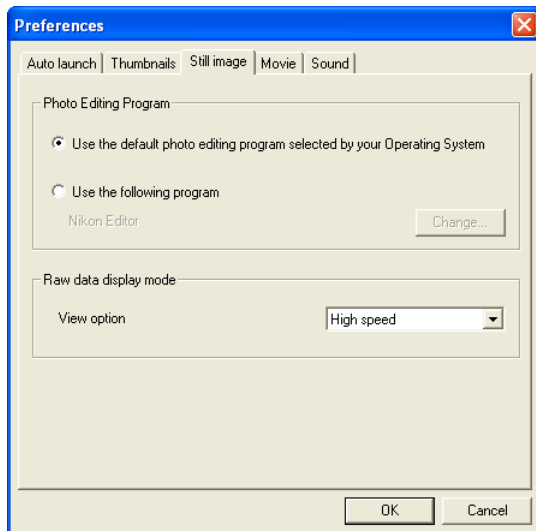




# The Still Image Tab

## Selecting an image editing program

In the **Still Image** tab you can specify a program to edit still images. The specified program will launch when you select **Edit** from the **File** menu of Nikon Browser or Nikon Viewer.



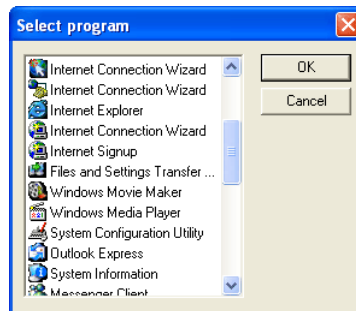
## Photo Editing Program

### *Use the default photo editing program selected by your Operating System*

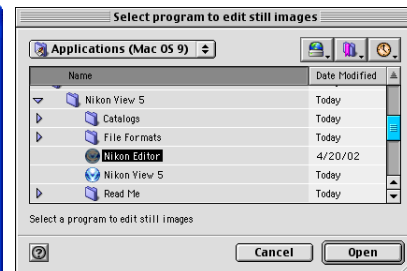
Select this option if you want the operating system to display the selected image in the default image editing program.

### *Use the following program*

Select this option if you want the operating system to display the selected image in a specified image editing program. To specify a program, click **Change** and select the program in the **Select program** dialog box.

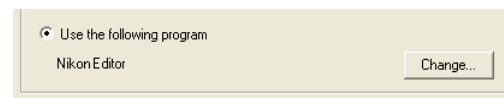


Windows



Macintosh

When you select a program, its name is displayed.



# The Still Image Tab (cont.)

## RAW data display mode

Select the mode to display NEF image files. You can choose from either **High quality** or **High speed**.



### High quality

Choose this option to maximize image quality when images are viewed in close up. The time taken to display images will increase.

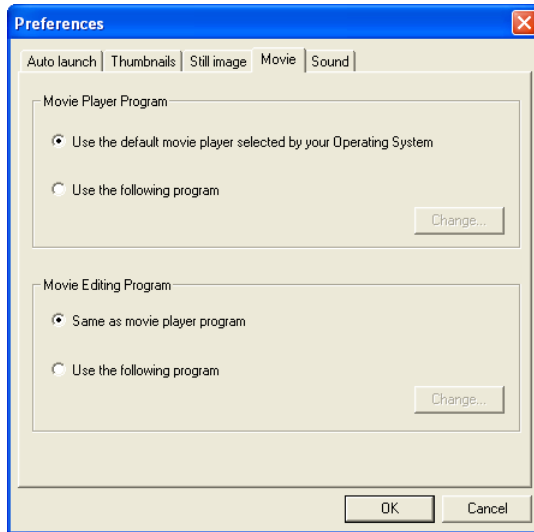
### High speed

Choose this option to reduce the time that it takes to display RAW images. Note however that image resolution will decrease, and images may appear grainy in close up.

# The Movie Tab

## Selecting a movie player program

In the **Movie** tab, you can specify a program to play back or edit movies. The selected program will launch when you select a movie file thumbnail in Nikon Browser's thumbnail list area.



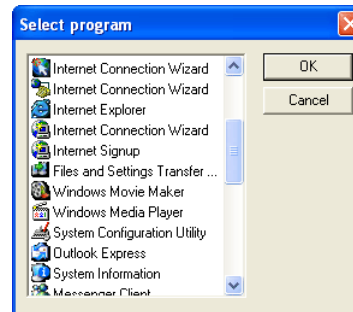
## Movie Player Program

### Use the default movie player selected by your Operating System

Select this option if you want the operating system to play back the movie in the default program.

### Use the following program

Select this option if you want the specified program to launch and play back the movie. To specify a program, click **Change** and select the program in the **Select program** dialog box.

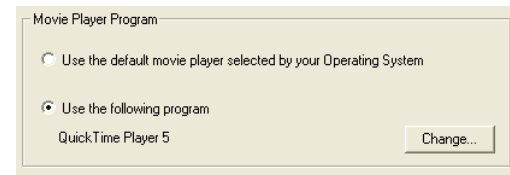


Windows



Macintosh

When you select a program, its name is displayed.



# The Movie Tab (cont.)

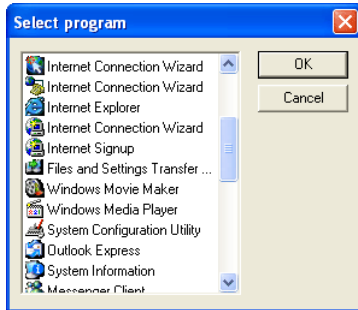
## Movie Editing Program area

### Same as movie player program

Select this option if you want the program specified in the **Movie Player Program** area to launch and display the movie for editing.

### Use the following program

Select this option if you want the specified program to launch and display the movie for editing. To specify a program, click **Change** and select the program in the **Select program** dialog box. When you select a program, its name is displayed.

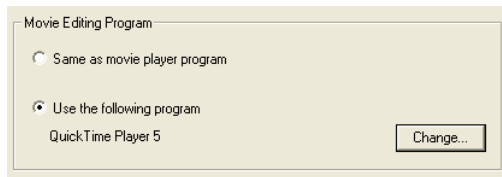


Windows



Macintosh

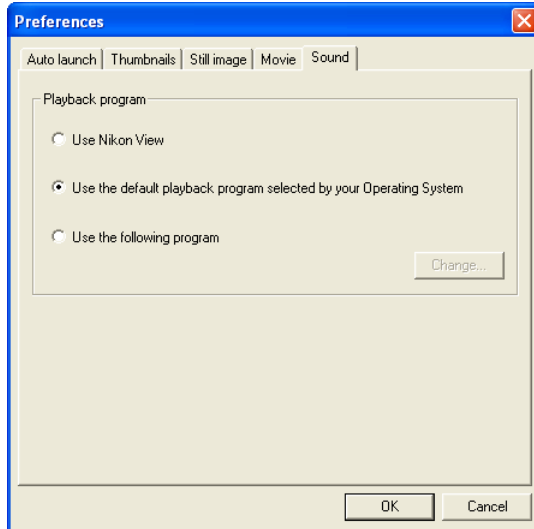
When you select a program, its name is displayed.



# The Sound Tab (Windows only)

## Selecting a program to play back voice memos

Use the **Sound** tab to specify which program will be used to play back the voice memo when an image file containing a voice memo is selected in Nikon Browser.



## Player Program

### Use Nikon View

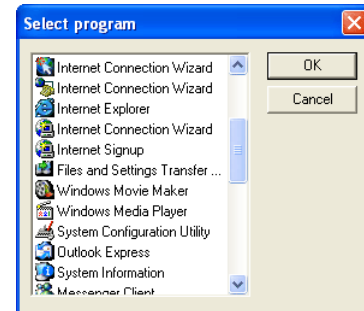
Voice memos will be played back in Nikon View.

### Use the default playback program selected by your Operating System

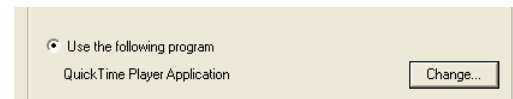
The application assigned by the OS to the selected image file will start and play back the voice memo.

### Use the following program

The specified application will start and play back the voice memo. To specify the application, click **Change** and select an application from the list in the dialog box which appears.



When you select a program, its name is displayed.



# Nikon Browser Menus

## Windows

| File                      |        |   |
|---------------------------|--------|---|
| View...                   |        |   |
| Edit                      | Ctrl+E |   |
| Edit using other programs |        | ▶ |
| Delete                    | Del    |   |
| Delete Sound              |        |   |
| Page Setup...             |        |   |
| Print...                  | Ctrl+P |   |
| Play sound...             |        |   |
| IPTC Information...       |        |   |
| Attribute                 |        | ▶ |
| Exit                      | Alt+F4 |   |

### View

Opens the image file associated with the selected thumbnail in Nikon Viewer.

### Edit

Edits the image file associated with the selected thumbnail using the specified program.

### Edit using other programs

Displays the **Add/Remove editing program** command in the submenu which allows you to register image editing programs.

|                             |     |                               |
|-----------------------------|-----|-------------------------------|
| Edit using other programs ▶ |     | Add/Remove editing program... |
| Delete                      | Del | Nikon Editor                  |
| Delete Sound                |     | Paint                         |

### Add/Remove editing program

Registers image editing programs. Also allows you to change the name of the program displayed in the menu.

### Delete

Deletes the image file associated with the selected thumbnail.

### Delete Sound

Deletes the voice memo attached to current image.

### Page Setup

Sets the page size for printing.

### Print

Prints the selected image(s).

### Play Sound

Plays back the voice memo attached to the selected file.

### IPTC information

Displays the file information.

### Attribute

Displays the following commands in the submenu: **Protection attribute ON**, **Protection attribute OFF**, **Hide mode ON**, and **Hide mode OFF**. Use the commands to toggle the attributes of the selected image on and off.

|             |                          |              |
|-------------|--------------------------|--------------|
| Attribute ▶ | Protection attribute ON  | Ctrl+L       |
| Exit        | Protection attribute OFF | Ctrl+Shift+L |
|             | Hide mode ON             | Ctrl+H       |
|             | Hide mode OFF            | Ctrl+Shift+H |

### Protection attribute ON

Turns deletion protection on.

### Protection attribute OFF

Removes the protection setting from the selected file.

### Hide mode ON

Hides the selected file.

### Hide mode OFF

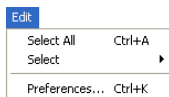
Removes hide setting from selected file.

### Exit

Quits Nikon View 5.



## Windows - Cont'd

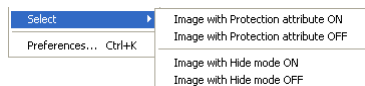


### Select All

Selects all the displayed thumbnails.

### Select

Displays the following commands in the submenu: **Image with Protection attribute ON**, **Image with Protection attribute OFF**, **Image with Hide mode ON**, and **Image with Hide mode OFF**. Use the commands to select all the thumbnails that have the same attribute.



### Image with Protection attribute ON

Selects all protected thumbnails.

### Image with Protection attribute OFF

Selects all unprotected thumbnails.

### Image with Hide mode ON

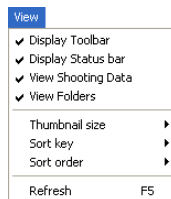
Selects all hidden thumbnails.

### Image with Hide mode OFF

Selects all thumbnails that have not been hidden.

### Preferences

Displays the **Preferences** dialog box.



### Display Toolbar

Shows or hides the toolbar.

### Display Status bar

Shows or hides the status bar.

### View Shooting Data

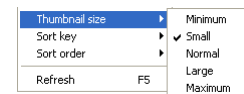
Shows or hides the Shooting Data area.

### View Folders

Shows or hides the folder tree area.

## Thumbnail size

Displays the thumbnail size submenu: Use the submenu to change the size of thumbnails.



### Minimum

Sets the size of thumbnails to  $64 \times 64$  pixels.

### Small

Sets the size of thumbnails to  $96 \times 96$  pixels.

### Normal

Sets the size of thumbnails to  $128 \times 128$  pixels.

### Large

Sets the size of thumbnails to  $192 \times 192$  pixels.

### Maximum

Sets the size of thumbnails to  $256 \times 256$  pixels.

### Sort key

Displays the **File name** and **Updated date and time** commands in the submenu. Use the commands to sort the thumbnails based on the specified condition.



### File name

Sorts thumbnails based on the file names.

### Updated date and time

Sorts thumbnails based on the updated date and time.

### Sort order

Displays the **Ascending** and **Descending** commands in the submenu.



### Ascending

Sorts thumbnails in ascending order of the selected **Sort key**.

### Descending

Sorts thumbnails in descending order of the selected **Sort key**.



### Rotate

Rotates selected thumbnails and associated images.

### Refresh

Refreshes the information in the folder tree, thumbnail and shooting information areas.



# Windows - Cont'd

| Folder               |                 |
|----------------------|-----------------|
| Back                 | Alt+Left Arrow  |
| Forward              | Alt+Right Arrow |
| Up one level         | Ctrl+U          |
|                      |                 |
| Favorites            | ▶               |
| Transfer destination | ▶               |
|                      |                 |
| Open with Explorer   |                 |

## Back

Goes back to the previously selected folder.

## Forward

Takes you back to where you were when you selected the **Back** command.

## Up one level

Moves to the folder one level higher than the current folder in the folder hierarchy.

## Favorites

Displays the **Add to Favorites** and **Organize Favorites** commands in the submenu. Use the commands to add the selected folder to Favorites or organize the folders you added.

|                      |   |                       |
|----------------------|---|-----------------------|
| Favorites            | ▶ | Add to Favorites...   |
| Transfer destination | ▶ | Organize Favorites... |
|                      |   |                       |
| Open with Explorer   |   | Summer Vacation       |
|                      |   | Birthday Party        |
|                      |   | My Pictures           |

## Add to Favorites

Adds the selected folder to the Favorites. You can add up to 30 folders.

## Organize Favorites

Organizes the folders added to Favorites. You can change the name and order of the folders displayed in Favorites.

## Transfer destination

Displays the 10 most recent transfer destinations.

## Open with Explorer

Opens the folder that holds the selected thumbnail in Explorer.

| Tools                    |  |
|--------------------------|--|
| Launch Image Transfer... |  |
|                          |  |
| Slideshow...             |  |
| E-mail...                |  |

## Launch Image Transfer

Launches Nikon Transfer.

## Slideshow

Plays the selected thumbnails as a slideshow.

## E-mail

E-mails the selected images using the application specified in the Preferences dialog box.

| Help                |    |
|---------------------|----|
| Help topics...      | F1 |
|                     |    |
| About Nikon View... |    |

## Help topics

Displays Nikon View 5 help topics.

## About Nikon View

Displays version and copyright information for Nikon View 5.



**About Nikon View 5**  
Displays version and copyright information for Nikon View 5.



**View**  
Opens the image file associated with the selected thumbnail in Nikon Viewer.

**Edit**  
Edits the image file associated with the selected thumbnail using the specified program.

**Edit using other program**  
Displays the **Add/Remove editing program** command in the submenu which allows you to register image editing programs.



**Add/Remove editing program**  
Registers image editing programs. Also allows you to change the name of the program displayed in the menu.

**Delete**  
Deletes the image file associated with the selected thumbnail.

**Delete Sound**  
Deletes the voice memo attached to current image.

**Page Setup**  
Sets the page size for printing.

**Print**  
Prints the selected image(s).

**Play Sound**  
Plays voice memo attached to current image.

**IPTC information**  
Displays the file information.

**Attribute**  
Displays the **Protection attribute ON** and **Protection attribute OFF** commands in the submenu. Use the commands to toggle the attributes of the selected image on and off.



**Protection attribute ON**  
Sets the Protection attribute to an image file.

**Protection attribute OFF**  
Clears the Protection attribute of an image file.

**Quit**  
Quits Nikon View 5.

| Edit                |    |
|---------------------|----|
| Cannot Undo         | ⌘Z |
| Cut                 | ⌘X |
| Copy                | ⌘C |
| Paste               | ⌘V |
| Clear               |    |
| Select All          | ⌘A |
| Select              | ▶  |
| Transfer Options... |    |
| Preferences...      | ⌘K |

Undo / Cut / Copy / Paste / Clear

Used when entering text in a text field, for example, file and folder names. You can cancel commands, cut, paste, or delete the selected text, and select all text.

Select All

Selects all the displayed thumbnails.

Select

Displays the **Image with Protection attribute ON** and **Image with Protection attribute OFF** commands in the submenu. Use the commands to select all the thumbnails in the list that have the same attribute.

| Select                              |    |
|-------------------------------------|----|
| Image with Protection attribute ON  |    |
| Image with Protection attribute OFF |    |
| Transfer Options...                 |    |
| Preferences...                      | ⌘K |

Image with Protection attribute ON

Selects all the protected thumbnails.

Image with Protection attribute OFF

Selects all the unprotected thumbnails.

Preferences

Displays the Preferences dialog box.

| View                 |    |
|----------------------|----|
| ✓ View Shooting Data |    |
| ✓ View Folders       |    |
| Thumbnail size       | ▶  |
| Sort key             | ▶  |
| Sort order           | ▶  |
| Previous             |    |
| Next                 |    |
| View entire image    |    |
| Zoom in              | ⌘+ |
| Zoom out             | ⌘- |
| Zoom Tool            | ⌘9 |
| Hand tool            | ⌘0 |
| Refresh              |    |

View Shooting Data

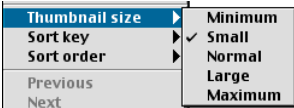
Shows or hides the Shooting Data area.

View Folders

Shows or hides the folder tree area.

Thumbnail size

Displays the thumbnail size submenu:  
Use the submenu to change the size of thumbnails.



Minimum

Sets the size of the thumbnails to 64 × 64 pixels.

Small

Sets the size of the thumbnails to 96 × 96 pixels.

Normal

Sets the size of the thumbnails to 128 × 128 pixels.

Large

Sets the size of the thumbnails to 192 × 192 pixels.

Maximum

Sets the size of the thumbnails to 256 × 256 pixels.

Sort key

Displays the **File name** and **Updated date and time** commands in the submenu. Use the commands to sort the thumbnails based on the specified condition.



File name

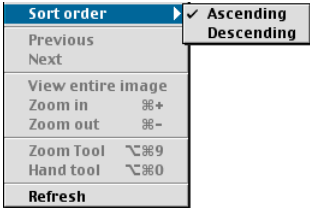
Sorts the thumbnails based on the file names.

Updated date and time

Sorts the thumbnails based on the updated date and time.

Sort order

Displays the **Ascending** and **Descending** commands in the submenu. Use the commands to sort the thumbnails in the ascending or descending order.



Ascending

Sorts the thumbnails in ascending order of the selected Sort key.

Descending

Sorts the thumbnails in descending order of the selected Sort key.

Refresh

Refreshes the information of the folder tree, thumbnail list, and shooting data areas.



Rotate

Rotates the selected thumbnails and the associated images.

## Macintosh (Mac OS 9) - Cont'd

### Folder

|                         |    |
|-------------------------|----|
| Back                    | ⌘[ |
| Forward                 | ⌘] |
| Up one level            | ⌘U |
| Favorites               | ▶  |
| Transfer destination    | ▶  |
| Open with Nikon Browser |    |
| Open with Finder        |    |

### Back

Goes back to the previously selected folder.

### Forward

Takes you back to where you were when you selected the **Back** command.

### Up one level

Moves to the folder one level higher than the current folder in the folder hierarchy.

### Favorites

Displays the **Add to Favorites** and **Organize Favorites** commands in the submenu. Use the commands to add the selected folder to Favorites or organize the list of Favorites.

|                         |   |                       |
|-------------------------|---|-----------------------|
| Favorites               | ▶ | Add to Favorites...   |
| Transfer destination    | ▶ | Organize Favorites... |
| Open with Nikon Browser |   | Documents             |
| Open with Finder        |   |                       |

### Add to Favorites

Adds the selected folder to Favorites. You can add up to 30 folders.

### Organize Favorites

Organizes the folders added to Favorites. You can change the name and order of the folders displayed in Favorites.

### Transfer Destination

Displays the 10 most recent transfer destinations.

### Open in Finder

Opens the folder that holds the selected thumbnail in the Finder.

### Tools

|                               |
|-------------------------------|
| Launch Image Transfer...      |
| Slideshow...                  |
| E-mail...                     |
| Publish to NikonNet or PDA... |

### Launch Image Transfer

Displays Nikon Transfer.

### Slideshow

Plays the selected thumbnails as a slideshow.

### E-mail

E-mails the selected images using the application specified in the **Preferences** dialog box.

### Help

|                       |
|-----------------------|
| About Balloon Help... |
| Show Balloons         |
| Nikon View 5 Help ⌘?  |

### Show Balloons

Displays **Balloon Help**.

### Nikon View 5 Help

Opens the Nikon View 5 help file.

## Nikon View 5

About Nikon View 5...  
Preferences... ⌘K  
  
Services ►  
  
Hide Nikon View 5 ⌘H  
Hide Others  
Show All  
  
Quit Nikon View 5 ⌘Q

### About Nikon View 5

Displays version and copyright information for Nikon View 5.

### Preferences

Displays the Preferences dialog box.

### Quit Nikon View 5

Quits Nikon View 5.

## File

Transfer ⌘T  
View... ⌘O  
  
Close ⌘W  
Edit ⌘E  
Edit using other program ►  
  
Cancel Registration  
Delete ⌘⌫  
Delete Sound  
  
Page Setup...  
Print... ⌘P  
  
Play Sound...  
IPTC Information...  
Attribute ►

### View

Opens the image file associated with the selected thumbnail in Nikon Viewer.

### Edit

Edits the image file associated with the selected thumbnail using the specified program.

### Edit using other program

Displays the **Add/Remove editing program** command in the submenu which allows you to register image editing programs.

Edit using other program ► Add/Remove editing program...  
Cancel Registration  
Delete ⌘⌫ Nikon Capture Editor  
Nikon Editor

### Add/Remove editing program

Registers image editing programs. Also allows you to change the name of the program displayed in the menu.

### Delete

Deletes the image file associated with the selected thumbnail.

### Delete Sound

Deletes the voice memo attached to current image.

### Page Setup

Sets the page size for printing.

### Print

Prints the selected image(s).

### Play Sound

Plays voice memo attached to current image.

### IPTC information

Displays the file information.

### Attribute

Displays the **Protection attribute ON** and **Protection attribute OFF** commands in the submenu. Use the commands to toggle the attributes of the selected image on and off.

Attribute ► Protection attribute ON ⌘L  
Protection attribute OFF ⇧⌘L

### Protection attribute ON

Sets the Protection attribute to an image file.

### Protection attribute OFF

Clears the Protection attribute of an image file.

## Macintosh (Mac OS X) - Cont'd

### Edit

|                     |    |
|---------------------|----|
| Cannot Undo         | ⌘Z |
| Cut                 | ⌘X |
| Copy                | ⌘C |
| Paste               | ⌘V |
| Clear               |    |
| Select All          | ⌘A |
| Select              | ▶  |
| Transfer Options... |    |

### Undo / Cut / Copy / Paste / Clear

Used when entering text in a text field, for example, file and folder names. You can cancel commands, cut, paste, or delete the selected text, and select all text.

### Select All

Selects all the displayed thumbnails.

### Select

Displays the **Image with Protection attribute ON** and **Image with Protection attribute OFF** commands in the submenu. Use the commands to select all the thumbnails in the list that have the same attribute.

|                     |    |
|---------------------|----|
| Select All          | ⌘A |
| Select              | ▶  |
| Transfer Options... |    |

|                                     |
|-------------------------------------|
| Image with Protection attribute ON  |
| Image with Protection attribute OFF |

### Image with Protection attribute ON

Selects all the protected thumbnails.

### Image with Protection attribute OFF

Selects all the unprotected thumbnails.

### View

|                                 |    |
|---------------------------------|----|
| ✓ View Shooting Data            |    |
| ✓ View Folders                  |    |
| Thumbnail Size                  | ▶  |
| Sort Key                        | ▶  |
| Sort Order                      | ▶  |
| Previous                        |    |
| Next                            |    |
| View Entire Image               |    |
| Zoom In                         | ⌘+ |
| Zoom Out                        | ⌘- |
| Zoom Tool                       | ⌘9 |
| Hand Tool                       | ⌘0 |
| View captured image immediately |    |
| Refresh                         |    |

### View Shooting Data

Shows or hides the Shooting Data area.

### View Folders

Shows or hides the folder tree area.

### Thumbnail size

Displays the thumbnail size submenu: Use the submenu to change the size of thumbnails.

|                |   |         |
|----------------|---|---------|
| Thumbnail Size | ▶ | Minimum |
| Sort Key       | ▶ | ✓ Small |
| Sort Order     | ▶ | Normal  |
| Previous       |   | Large   |
| Next           |   | Maximum |

### Minimum

Sets the size of the thumbnails to 64 × 64 pixels.

### Small

Sets the size of the thumbnails to 96 × 96 pixels.

### Normal

Sets the size of the thumbnails to 128 × 128 pixels.

### Large

Sets the size of the thumbnails to 192 × 192 pixels.

### Maximum

Sets the size of the thumbnails to 256 × 256 pixels.

Sort key

Displays the **File name** and **Updated date and time** commands in the submenu. Use the commands to sort the thumbnails based on the specified condition.



File name

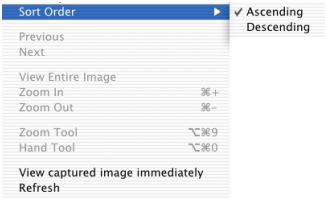
Sorts the thumbnails based on the file names.

Updated date and time

Sorts the thumbnails based on the updated date and time.

Sort order

Displays the **Ascending** and **Descending** commands in the submenu. Use the commands to sort the thumbnails in the ascending or descending order.



Ascending

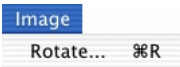
Sorts the thumbnails in ascending order of the selected Sort key.

Descending

Sorts the thumbnails in descending order of the selected Sort key.

Refresh

Refreshes the information of the folder tree, thumbnail list, and shooting data areas.



Rotate

Rotates the selected thumbnails and the associated images.



## Macintosh (Mac OS X) - Cont'd

### Folder

|                         |    |
|-------------------------|----|
| Back                    | ⌘[ |
| Forward                 | ⌘] |
| Up one level            | ⌘U |
| Favorites               | ▶  |
| Transfer Destination    | ▶  |
| Open with Nikon Browser |    |
| Open with Finder        |    |

### Back

Goes back to the previously selected folder.

### Forward

Takes you back to where you were when you selected the **Back** command.

### Up one level

Moves to the folder one level higher than the current folder in the folder hierarchy.

### Favorites

Displays the **Add to Favorites** and **Organize Favorites** commands in the submenu. Use the commands to add the selected folder to Favorites or organize the list of Favorites.

|                         |   |                       |
|-------------------------|---|-----------------------|
| Favorites               | ▶ | Add to Favorites...   |
| Transfer Destination    | ▶ | Organize Favorites... |
| Open with Nikon Browser |   | Pictures              |
| Open with Finder        |   |                       |

### Add to Favorites

Adds the selected folder to Favorites. You can add up to 30 folders.

### Organize Favorites

Organizes the folders added to Favorites. You can change the name and order of the folders displayed in Favorites.

### Transfer Destination

Displays the 10 most recent transfer destinations.

### Open with Finder

Opens the folder that holds the selected thumbnail in the Finder.

### Tools

|                               |
|-------------------------------|
| Launch Image Transfer...      |
| Slideshow...                  |
| E-mail...                     |
| Publish to NikonNet or PDA... |

### Launch Image Transfer

Displays Nikon Transfer.

### Slideshow

Plays the selected thumbnails as a slideshow.

### E-mail

E-mails the selected images using the application specified in the **Preferences** dialog box.

### Help

|                   |    |
|-------------------|----|
| Nikon View 5 Help | ⌘? |
|-------------------|----|

### Nikon View 5 Help

Opens the Nikon View 5 help file.

