

Nikon Viewer Reference Manual

How To Use Nikon Viewer

Overview (Pp. 2-3)

Using Nikon Viewer (Pp. 4-11)

Preferences (Pg. 12)

Nikon Viewer Menus (Pp. 13-20)



Nikon Viewer — Overview

Using Nikon Viewer

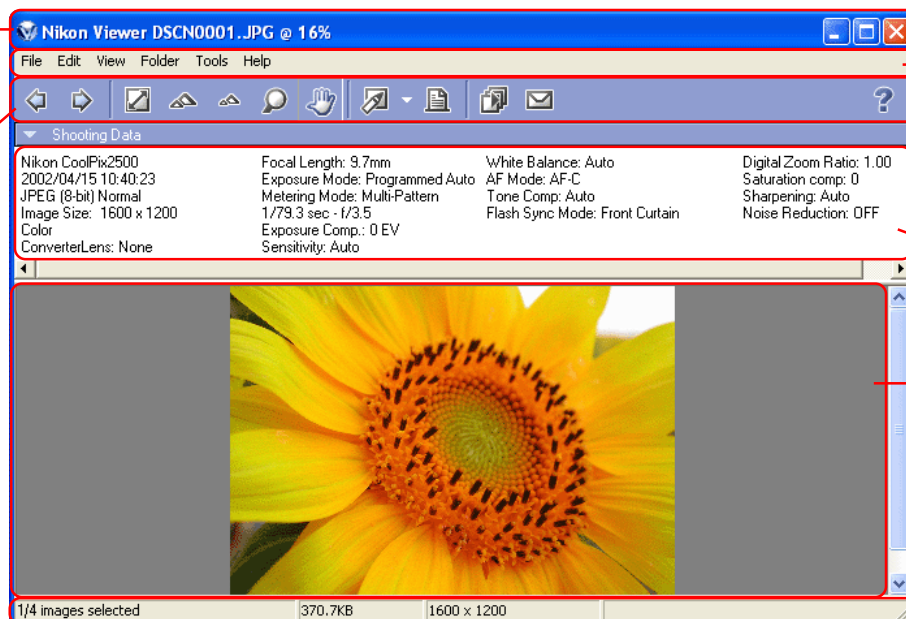
Nikon Viewer contains the following items:

Title Bar

Displays the file name and zoom ratio of the currently displayed image.

Toolbar

Contains buttons for the operations that can be performed in Nikon Viewer.



Menu bar

Contains menus for operations that can be performed in Nikon Viewer.

Shooting Data Area

Displays shooting data for the image currently displayed in the view area.

View Area

Displays images.

Status bar

Displays such information as the number of all the images that can be displayed, the position of the currently displayed images among them, and the file size of the currently displayed image.















Menus bar and tool buttons

The majority of operations in Nikon Viewer are performed using the menu bar and tool buttons. In the case of operations that can be performed by means of both menus and tool buttons, the explanation in this manual gives priority to the tool buttons.



The Nikon Viewer contains the following buttons:

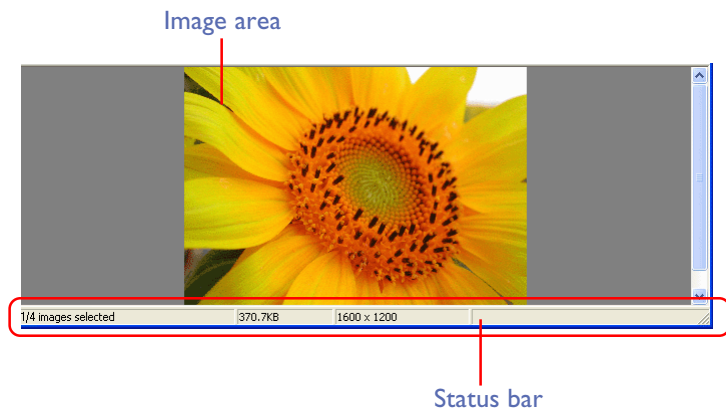
Button	Function
 Back	Displays the previous image when multiple images are selected for display (👁 4).
 Forward	Displays the next image when multiple images are selected for display (👁 4).
 View entire image	Adjusts the zoom ratio of the current image so that it fully fits the view area (👁 5).
 Zoom in	Zooms in on the current image (👁 5).
 Zoom out	Zooms out from the current image (👁 5).
 Zoom cursor	Zooms in and out of the current image. When in use, the mouse pointer changes to a magnifying glass (👁 6).
 Grab cursor	Pans image to display areas not currently visible in the view area. When in use, mouse pointer changes to a hand. (👁 6).

Button	Function
 Edit	Opens the selected image with the designated image editing program (👁 7).
 Print	Prints the selected image (👁 7).
 Slideshow	Plays back the selected image, and other images in the same folder, as a slideshow (👁 8).
 Mail	Sends selected images by e-mail. (👁 8).
 Help	Displays help for Nikon Viewer. (👁 11).

Using Nikon Viewer

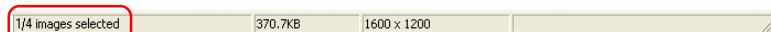
Displaying images in detail

An image appears in the Nikon Viewer view area when its thumbnail is double clicked in Nikon Browser. (Note that only still images and not movie files can be displayed in Nikon Browser.) Only one image can be displayed at a time. You can zoom in to and out from images displayed in the viewer.



If more than one thumbnail is selected, only one image is displayed. Use the **Back** and **Next** buttons to display other opened images.

You can check the number of the opened images and the status of the currently displayed image in the status bar of Nikon Viewer.



Use the **Forward** and **Back** buttons on the toolbar to view the other images when more than one image is selected. The order of display is the same as the order of display in the thumbnail list area of Nikon Browser.

Back button



Forward button



When one thumbnail is selected

In Windows, even if you open only one thumbnail in the thumbnail list area, you can browse through all the still images stored in the same folder as the selected image.

Viewing the entire image

You can make the entire image fit to the display area by clicking the **View entire image** button or selecting **View entire image** from the **View** menu.



View entire image

Zooming into or out of an image

You can zoom into or out of the image that is displayed in the view area. To zoom in and out, use the tools described below. The zoom ratio of the displayed image is displayed in the window title bar.



Zoom ratio

Zoom In / Zoom Out buttons

Click the **Zoom In** button to zoom into the image. Click **Zoom Out** to zoom out of the image. You can perform the same operations by selecting **Zoom In** or **Zoom Out** from the **View** menu.

Zoom In button



Zoom Out button



Zoom ratio

Zooming in or out step by step displays the current image at the following zoom ratios.

Windows

Original Image (100%)

Zoom In — 150%, 200%, 300%, 400%, 600%, 800%

Zoom Out — 66% 50%, 33%, 25%, 16%, 12%, 8%, 6%

Macintosh

Original Image (100%)

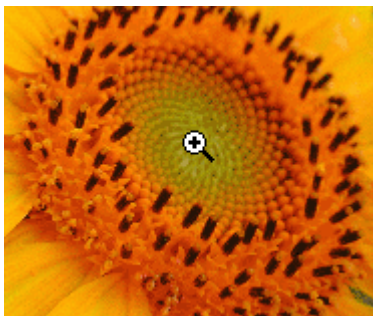
Zoom In — 150 % 200%.

Zoom Out — 66% 50%, 33%, 25%, 16%, 12%, 8%, 6%



Zoom cursor button

To select the zoom cursor, click the **Zoom Cursor** button. The mouse pointer will change into a magnifying glass.

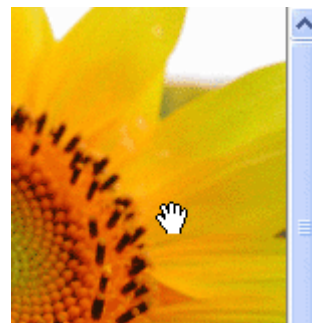


Position the **Zoom Cursor** over the current image and click the mouse to zoom in one step. Hold down Alt (Windows) or option (Macintosh) and click the mouse to zoom out one step. Whether zooming in or zooming out, the center of the displayed area is determined by the position of the Zoom Cursor. When zooming in, a "+" mark is displayed in the Zoom Cursor. When zooming out, a "-" mark is displayed.

Moving the image around

When you zoom in, the image area will show only part of the current image. Use the **Grab Cursor** to move the image around and display areas that are not currently visible.

Click the **Grab Cursor** button on the Quick Tools Palette, or select **Grab Cursor** from the **View** menu. The mouse pointer will change into a hand. To scroll the image, drag the mouse in the direction you want to go. You can also scroll the image using the scroll bars below and right of the image area.



Grab cursor and Zoom cursor

The **Hand** and **Zoom** cursors can not be used at the same time.



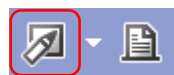
Editing image files

You can open and edit the image displayed in the view area with the program specified in the **Still image** tab of the **Preferences** dialog box.

To open the image in the specified program, click the **Edit** button on the toolbar.

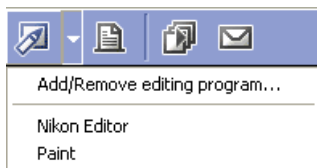
If you register a program using the **Add/Remove editing program** dialog box, you can also edit the image with a program other than the one specified in the **Preferences** dialog box.

To display the **Add/Remove editing program** dialog box, click the drop-down arrow on the **Edit** tool button and select **Add/Remove editing program** from the menu.



Edit button

For more information on the **Add/Remove editing program** dialog box, see “Add/Remove editing program”; (📷 Nikon Browser).

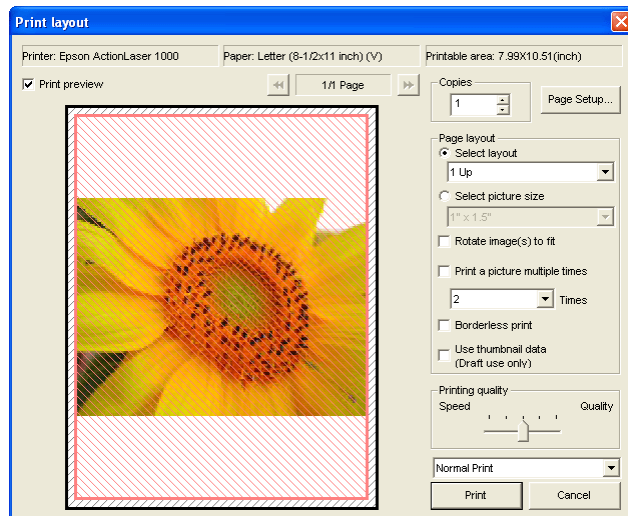


Printing images

You can print the image displayed in the view area. Use the **Print layout** dialog box to print the image.

To display the **Print layout** dialog box, click the **Print** button on the toolbar, or select **Print** from the **File** menu.

For more information on printing, see “Printing images”; (📷 Nikon Browser).



Viewing a slideshow

You can view the images opened in the view area as a slideshow. To view a slideshow, click the **Slideshow** button on the toolbar, or select **Slideshow** from the **Tools** menu.

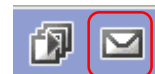


Slideshow button

For more information on playing back a slideshow, see “Playing a slideshow”; (🔍 Nikon Browser).

E-mailing images

Images displayed in the Image Area can be sent by e-mail. To send images, click the mail button on the tool bar or select **E-mail** from the **Tools** menu.



Mail button

For more information, see “E-mailing images”; (🔍 Nikon Browser).



If only one image is opened

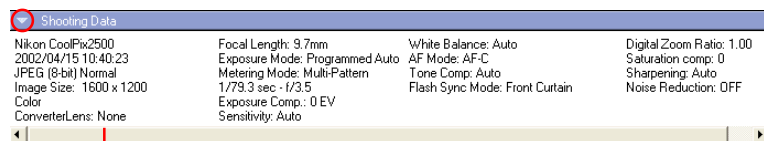
In Windows, if the currently displayed image is the only image opened, all the image files in the same folder as the one displayed are played back as a slideshow.



Displaying shooting data

When you select a single thumbnail, shooting data is displayed in the **Shooting Data** area.

No shooting data is displayed if no thumbnail is selected or if multiple thumbnails are selected. You can expand or collapse the shooting data by selecting **View Shooting Data** on the **View** menu. You can also expand or collapse the **Shooting Data** area by clicking the toggle button (a small triangle) in the upper left corner.



Shooting Data area expanded



Shooting Data area collapsed

For more information on the shooting data, see “Displaying shooting data”; (🔍 Nikon Browser).

Viewing file information

In Nikon Viewer, you can display the file information for the image displayed in the view area. To view the file information, select **IPTC Information** (Windows) on the **File Information** (Macintosh) menu to display the **IPTC Information** dialog box.

For more information on the file information, see “Viewing file information”; (🔍 Nikon Browser).

Opening folders in Nikon Browser

The folder containing the image currently displayed in the view area can be opened in Nikon Browser. To open the folder in Nikon Browser, select **Open with Browser** from the **Folder** menu.

Opening folders in Explorer or Finder

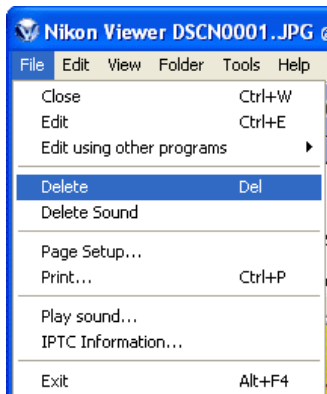
In Windows, the folder containing the image currently displayed in the view area can be opened in Explorer by selecting **Open with Explorer** from the **Folder** menu.

With Macintosh, the folder containing the image currently displayed in the view area can be opened in Finder by selecting **Open with Finder** from the **Folder** menu.



Deleting image files

To delete the image file displayed in the view area, select **Delete** from the **File** menu or press the Delete key.



The deleted image file is moved to the Recycle Bin (Windows) or the Trash (Macintosh).

When the displayed image is deleted, Nikon Viewer displays the next image in Nikon Browser's thumbnail list area. If the deleted image was the last image and there are no following files, then nothing is displayed in the view area.



Deleted image files

Deleted image files are moved to the Recycle Bin (Windows) or the Trash (Macintosh). To cancel the deletion, open the Recycle Bin or the Trash and put the deleted files back in their original location. In Windows, if you delete image files from the memory card inserted in the camera, card slot, or card reader, or from a network folder, the image files are permanently erased and cannot be recovered.

Viewing Help

To view Nikon View 5 Help, click the **Help** button on the toolbar, or use the **Help** menu.

Windows

Click the **Help** button on the toolbar, or select **Help topics** on the **Help** menu to display the **Help topics** window.

Macintosh

Click the **Help** button on the toolbar, or select **Nikon View 5 Help** on the **Help** menu to display "Nikon View 5 Help."

Select **Show Balloons** on the **Help** menu to enable balloon help. Only Mac OS default balloon help is available.



Viewing help in Nikon View 5

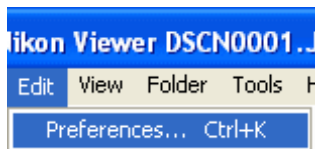
Clicking **Help** in Nikon Transfer, Nikon Browser, Nikon Viewer or Nikon Editor displays the same help file.



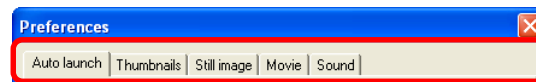
Preferences

Displaying the Preferences dialog box

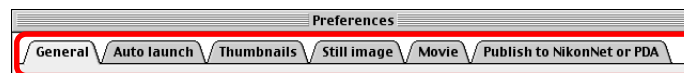
To display the **Preferences** dialog box, select **Preferences** from the **Edit** menu. Preferences can also be displayed in Nikon Browser. You cannot display the dialog box from within Nikon Transfer or Nikon Editor.



The **Preferences** dialog box contains the following tabs: **General** (Macintosh version Only), **Auto launch**, **Thumbnails**, **Still image** and **Movie**, **Sound** (Windows version Only).



Windows



Macintosh

Changes to the settings take effect not as they are made, but only when you click **OK** in the **Preferences** dialog box.

Click **Cancel** to close the **Preferences** dialog box and keep the original settings.

For detailed information refer to **Preferences**  in the Nikon Browser Reference Manual.

Nikon Viewer Menus

Windows

File		
Close	Ctrl+W	
Edit	Ctrl+E	
Edit using other programs		▶
Delete	Del	
Delete Sound		
Page Setup...		
Print...	Ctrl+P	
Play sound...		
IPTC Information...		
Exit	Alt+F4	

Close

Closes the image displayed in the view area.

Edit

Edits the image file associated with the selected thumbnail using the specified program.

Edit using other programs

Displays the **Add/Remove editing program** command in the submenu which allows you to register image editing programs.

Edit using other programs		
Delete	Del	Add/Remove editing program...
Delete Sound		Nikon Editor Adobe Photoshop 5.0 Limited Edition

Add/Remove editing program

Registers image editing programs. Also allows you to change the name of the program displayed in the menu.

Delete

Deletes the image file associated with the selected thumbnail.

Delete Sound

Deletes the voice memo attached to current image.

Page Setup

Sets the page size for printing.

Print

Prints the selected image(s).

Play Sound

Plays back the voice memo attached to current image.

IPTC information

Displays the **IPTC Information** dialog box.

Exit

Closes Nikon Viewer.

Edit
Preferences... Ctrl+K

Preferences

Displays the **Preferences** dialog box.

Windows - Cont'd

View	
✓ Display Toolbar	
✓ Display Status bar	
✓ View Shooting Data	
Previous	Left Arrow
Next	Right Arrow
View entire image	
Zoom in	Ctrl+"+"
Zoom out	Ctrl+"-"
Zoom Tool	
✓ Hand tool	Ctrl+9
Refresh	
F5	

Display Toolbar

Shows or hides the toolbar.

Display Status bar

Shows or hides the status bar.

View Shooting Data

Shows or hides the Shooting Data area.

Previous

Displays the previous image.

Next

Displays the next image.

View entire image

Displays the entire image.

Zoom in

Zooms into the displayed image.

Zoom out

Zooms out of the displayed image.

Zoom Tool

Zooms into the image, centering the display around the point you click.

Hand tool

Pans around the image when the entire image is not displayed.

Refresh

Refreshes the display of the view area, Shooting Data area, and the status bar.

Folder
Open with Nikon Browser
Open with Explorer

Open with Browser

Opens the folder containing the displayed image in Nikon Browser.

Open with Explorer

Opens the folder containing the displayed image in Explorer.

Tools
E-mail...

Slideshow

Plays the selected images in a slideshow.

E-mail

Sends the current image by e-mail.

Help
Help topics... F1
About Nikon View...

Help topics

Displays Nikon View 5 help topics.

About Nikon View

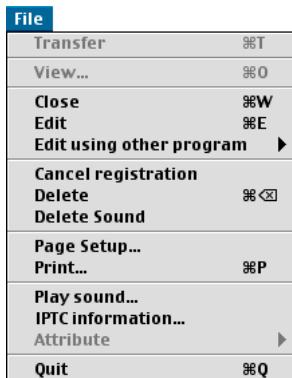
Displays version and copyright information for Nikon View 5.

Macintosh (Mac OS 9)



About Nikon View 5

Displays version information for Nikon View 5.



Close

Closes Nikon Viewer.

Edit

Opens and edits the image file associated with the selected thumbnail using the specified program.

Edit using other programs

Displays the **Add/Remove editing program** command in the submenu which allows you to register image editing programs.



Add/Remove editing program

Registers image editing programs. Also allows you to change the name of the program displayed in the menu.

Cancel registration

Closes the displayed image.

Delete

Deletes the image file associated with the selected thumbnail.

Delete Sound

Deletes the voice memo attached to current image.

Page Setup

Sets the page size for printing.

Print

Prints the selected image(s).

Play Sound

Plays voice memo attached to current image.

IPTC information

Displays the **IPTC Information** dialog box.

Quit

Quits Nikon View 5.



Macintosh (Mac OS 9) - Cont'd

Edit	
Cannot Undo	⌘Z
Cut	⌘X
Copy	⌘C
Paste	⌘V
Clear	
Select All	⌘A
Select	▶
Transfer Options...	
Preferences...	⌘K

Preferences

Displays the **Preferences** dialog box.

View	
✓ View Shooting Data	
✓ View Folders	
Thumbnail size	▶
Sort key	▶
Sort order	▶
Previous	
Next	
View entire image	
Zoom in	⌘+
Zoom out	⌘-
✓ Zoom Tool	⌘9
Hand tool	⌘0
Refresh	

View Shooting Data

Shows or hides the Shooting Data area.

Previous

Displays the previous image.

Next

Takes you back to where you were when you selected the **Previous** command.

Folder	
Back	⌘[
Forward	⌘]
Up one level	⌘U
Favorites	▶
Transfer destination	▶
Open with Nikon Browser	
Open with Finder	

View entire image

Zooms out of the image to display the entire image.

Zoom in

Zooms into the displayed image.

Zoom out

Zooms out of the displayed image.

Zoom Tool

Zooms into the image, centering the display around the point you click. The shape of the mouse pointer changes to the shape of a magnifying glass.

Hand tool

Pans around the image when the entire image is not displayed.

Refresh

Refreshes the display of the view area, Shooting Data area, and the status bar.

Open with Browser

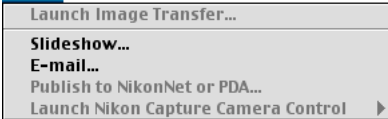
Opens the folder containing the displayed image in Nikon Browser.

Open in Finder

Opens in the Finder the folder containing the image displayed in Nikon Viewer.

Macintosh (Mac OS 9) - Cont'd

Tools



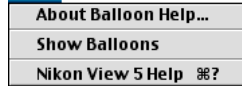
Slideshow

Plays the selected images in a slideshow.

E-mail

Sends the current image by e-mail.

Help



About Balloon Help

Explains how to use Balloon Help.

Show Balloons

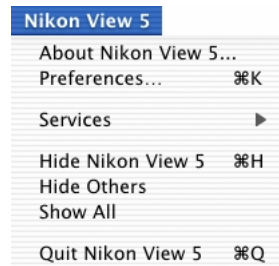
Displays **Balloon Help**.

Nikon View 5 Help

Opens the Nikon View 5 help file.



Macintosh (Mac OS X)



About Nikon View 5

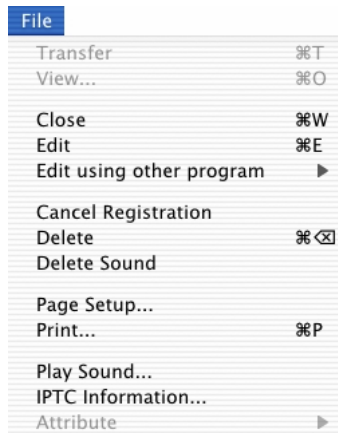
Displays version information for Nikon View 5.

Preferences

Displays the **Preferences** dialog box.

Quit Nikon View 5

Quits Nikon View 5.



Close

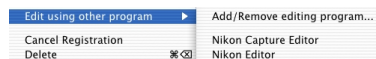
Closes Nikon Viewer.

Edit

Opens and edits the image file associated with the selected thumbnail using the specified program.

Edit using other program

Displays the **Add/Remove editing program** command in the submenu which allows you to register image editing programs.



Add/Remove editing program

Registers image editing programs. Also allows you to change the name of the program displayed in the menu.

Cancel registration

Closes the displayed image.

Delete

Deletes the image file associated with the selected thumbnail.

Delete Sound

Deletes the voice memo attached to current image.

Page Setup

Sets the page size for printing.

Print

Prints the selected image(s).

Play Sound

Plays voice memo attached to current image.

IPTC Information

Displays the **IPTC Information** dialog box.

Macintosh (Mac OS X) - Cont'd

View

✓ View Shooting Data	
✓ View Folders	
Thumbnail Size	►
Sort Key	►
Sort Order	►
Previous	
Next	
View Entire Image	
Zoom In	⌘+
Zoom Out	⌘-
✓ Zoom Tool	⌘9
Hand Tool	⌘0
View captured image immediately	
Refresh	

View Shooting Data

Shows or hides the Shooting Data area.

Previous

Displays the previous image.

Next

Takes you back to where you were when you selected the **Previous** command.

View Entire Image

Zooms out of the image to display the entire image.

Zoom In

Zooms into the displayed image.

Zoom Out

Zooms out of the displayed image.

Zoom Tool

Zooms into the image, centering the display around the point you click. The shape of the mouse pointer changes to the shape of a magnifying glass.

Hand Tool

Pans around the image when the entire image is not displayed.

Refresh

Refreshes the display of the view area, Shooting Data area, and the status bar.

Folder

Back	⌘[
Forward	⌘]
Up one level	⌘U
Favorites	►
Transfer Destination	►
Open with Nikon Browser	
Open with Finder	

Open with Nikon Browser

Opens the folder containing the displayed image in Nikon Browser.

Open with Finder

Opens in the Finder the folder containing the image displayed in Nikon Viewer.

Macintosh (Mac OS X) - Cont'd

Tools

Launch Image Transfer...

Slideshow...

E-mail...

Publish to NikonNet or PDA...

Launch Nikon Capture Camera Control

Help

Nikon View 5 Help ⌘?

Nikon View 5 Help

Opens the Nikon View 5 help file.

Slideshow

Plays the selected images in a slideshow.

E-mail

Sends the current image by e-mail.

