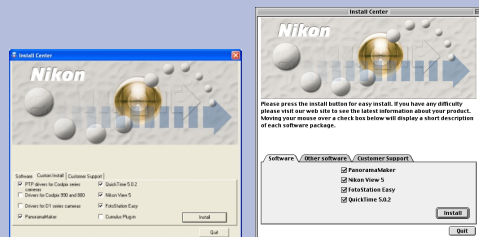


Nikon View 5 — Set-up

To install and use Nikon View 5, follow the steps below: Click the step titles for more detailed information.

Install

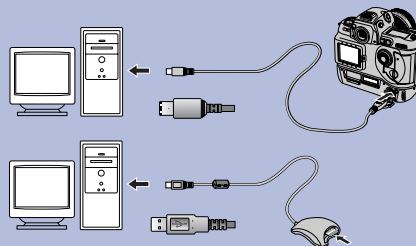


(Win XP)

(Mac OS 9)

Install Nikon View 5 on your computer.

Connect camera to computer



Connect a camera to the computer or insert a card in a card reader or card slot.

If Nikon Transfer does not start automatically...

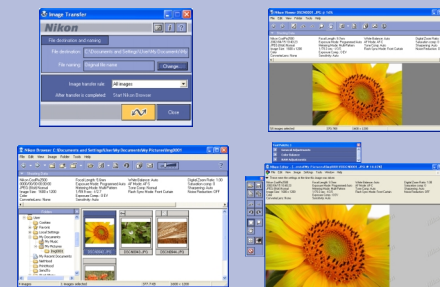
(Windows only)

Confirm device registration

Confirm that the computer has correctly registered the camera.

(Windows only)

Use Nikon View 5



Use Nikon Transfer, Nikon Browser, Nikon Viewer and Nikon Editor.

