



A

B

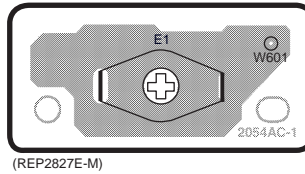
C

D

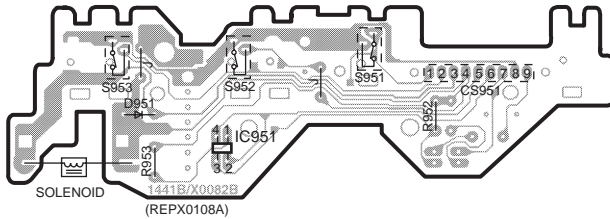
E

F

## D EARTH TERMINAL P.C.B.



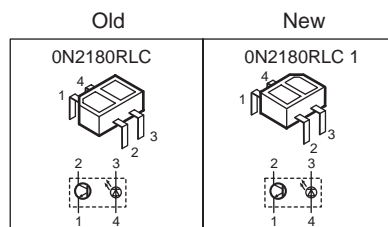
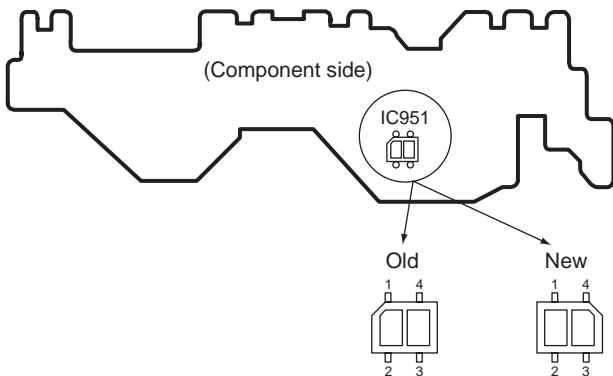
## B MECHANISM P.C.B. (DECK1)



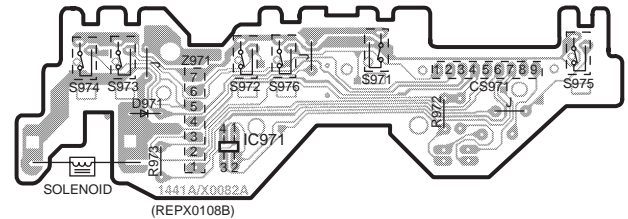
### Note for IC951 replacement

- Two different types (old or new) parts are mounted on P.C.B. as for IC951.
- When servicing, care to replace the parts due to those shape.
- Replacement procedures

	Parts No.	Direction	Remarks
Old	0N2180RLC	Mount the parts on given position. (Printed pattern on P.C.B.)	Refer to the figure below.
New	0N2180RLC1 <sup>≈</sup>	For IC951: Mount the parts so the cut corner is located upper right.	



## C MECHANISM P.C.B. (DECK2)



### Note for IC971 replacement

- Two different types (old or new) parts are mounted on P.C.B. as for IC971.
- When servicing, care to replace the parts due to those shape.
- Replacement procedures

	Parts No.	Direction	Remarks
Old	0N2180RLC	Mount the parts on given position. (Printed pattern on P.C.B.)	Refer to the figure below.
New	0N2180RLC1 <sup>≈</sup>	For IC971: Mount the parts so the cut corner is located upper right.	

