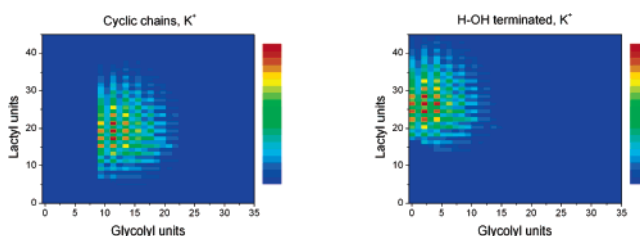


Communications

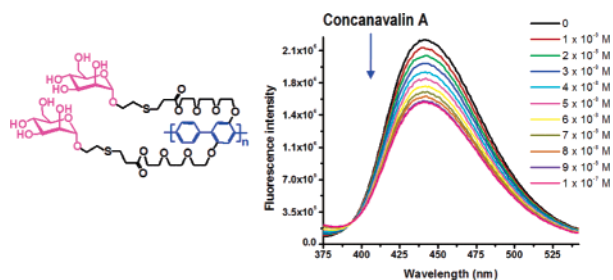
2465 Topology Characterization by MALDI-ToF-MS of Enzymatically Synthesized Poly(lactide-co-glycolide)

Saskia Huijser, Bastiaan B. P. Staal,
Juan Huang, Robbert Duchateau,* and
Cor E. Koning

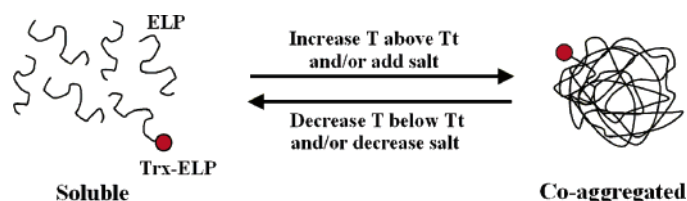


2470 Synthesis of Highly Water-Soluble Fluorescent Conjugated Glycopoly(*p*-phenylene)s for Lectin and *Escherichia coli*

Cuihua Xue, Sonali P. Jog,
Pushpalatha Murthy, and Haiying Liu*



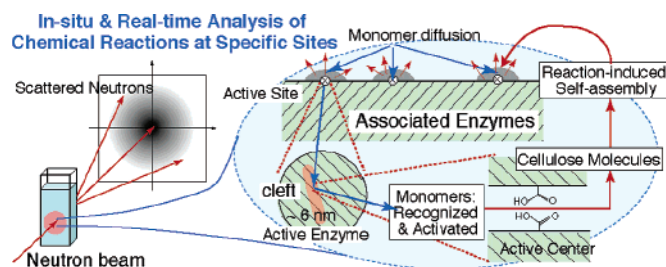
2475 Simultaneous Phase Transition of ELP Tagged Molecules and Free ELP: An Efficient and Reversible Capture System



Xin Ge and Carlos D. M. Filipe*

2479 Chemical Reaction at Specific Sites and Reaction-Induced Self-Assembly as Observed by in Situ and Real Time SANS: Enzymatic Polymerization to Synthetic Cellulose

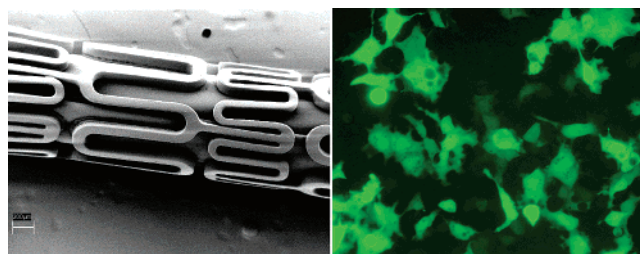
Takeji Hashimoto,* Hirokazu Tanaka, Satoshi Koizumi, Kazuhiro Kurosaki, Masashi Ohmae, and Shiro Kobayashi



Articles

2483 Release of Plasmid DNA from Intravascular Stents Coated with Ultrathin Multilayered Polyelectrolyte Films

Christopher M. Jewell, Jingtao Zhang, Nathaniel J. Fredin, Matthew R. Wolff, Timothy A. Hacker, and David M. Lynn*



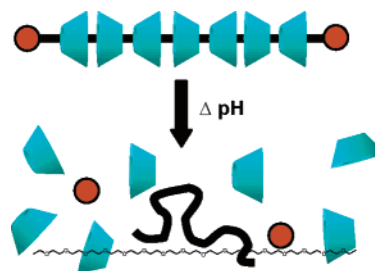
2492 Micellization Phenomena of Amphiphilic Block Copolymers Based on Methoxy Poly(ethylene glycol) and Either Crystalline or Amorphous Poly(caprolactone-*b*-lactide)

Jie Zhang, Li-Qun Wang,* Hongjun Wang, and Kehua Tu



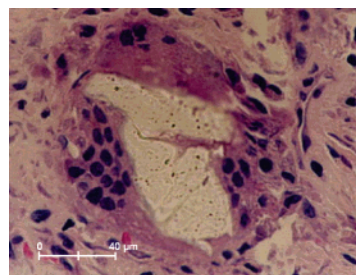
2501 Synthesis, Characterization, and pH-Triggered Dethreading of α -Cyclodextrin-Poly(ethylene glycol) Polyrotaxanes Bearing Cleavable Endcaps

Scott Loethen, Tooru Ooya, Hak Soo Choi, Nobuhiko Yui,* and David H. Thompson*



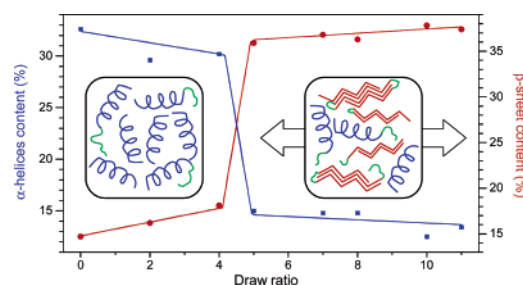
2507 Biological Impact of Polyacetal Particles on Loosening of Isoelastic Stems

Klemen Stražar,* Andrej Cör, and Vane Antolič



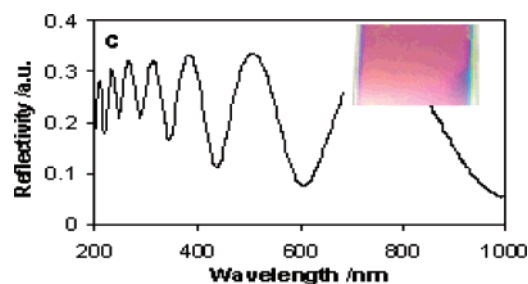
2512 Characterization by Raman Microspectroscopy of the Strain-Induced Conformational Transition in Fibroin Fibers from the Silkworm *Samia cynthia ricini*

Marie-Eve Rousseau, Lilyane Beaulieu, Thierry Lefèvre, Joanie Paradis, Tetsuo Asakura, and Michel Pézolet*



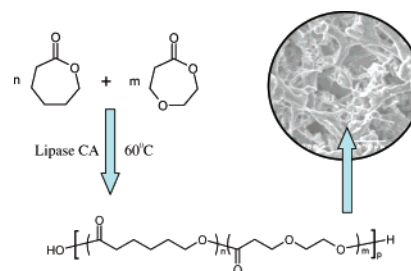
2522 Morphological and Optical Characterization of Polyelectrolyte Multilayers Incorporating Nanocrystalline Cellulose

Emily D. Cranston and Derek G. Gray*



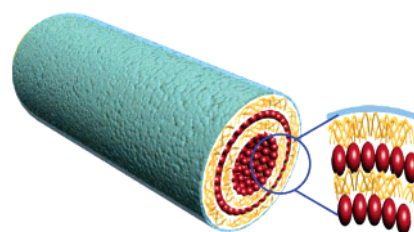
2531 Porous Scaffolds from High Molecular Weight Polyesters Synthesized via Enzyme-Catalyzed Ring-Opening Polymerization

Rajiv K. Srivastava and Ann-Christine Albertsson*



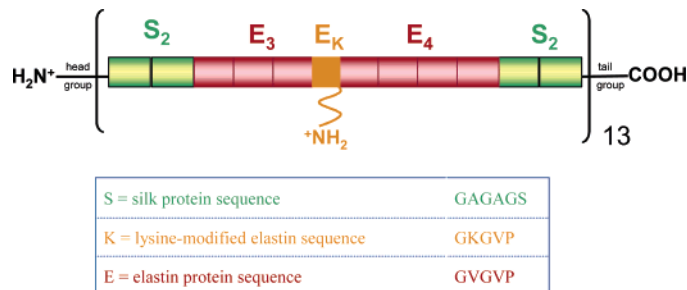
2539 Fabrication of Protein Nanotubes Based on Layer-by-Layer Assembly

Ying Tian, Qiang He, Yue Cui, and Junbai Li*



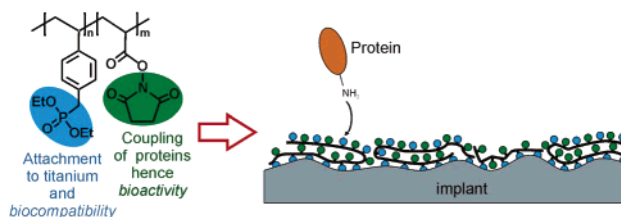
2543 Designer Protein-Based Performance Materials

Manoj Kumar,* Karl J. Sanford,
William P. Cuevas, Mai Du,
Katharine D. Collier, and Nicole Chow



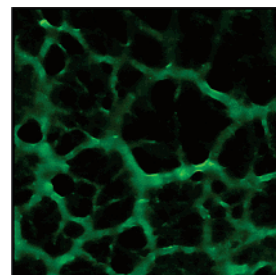
2552 Synthesis and Characterization of ■ Biocompatible Polymer Interlayers on Titanium Implant Materials

Nina Adden, Lara J. Gamble,
David G. Castner, Andrea Hoffmann,
Gerhard Gross, and Henning Menzel*



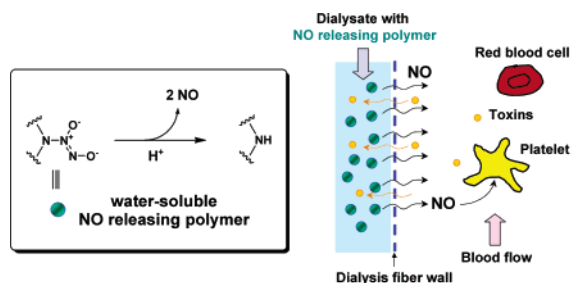
2560 Quantification and Confocal Imaging of Protein Specific Molecularly Imprinted Polymers

Daniel M. Hawkins, Andreea Trache,
E. Ann Ellis, Derek Stevenson,
Andreas Holzenburg, Gerald A. Meining, and
Subrayal M. Reddy*



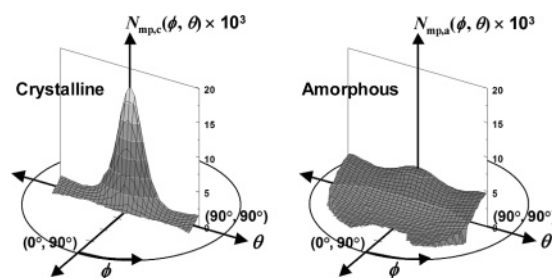
2565 Water-Soluble Poly(ethylenimine)-Based ■ Nitric Oxide Donors: Preparation, Characterization, and Potential Application in Hemodialysis

Zhengrong Zhou, Gail M. Annich,
Yiduo Wu, and Mark E. Meyerhoff*



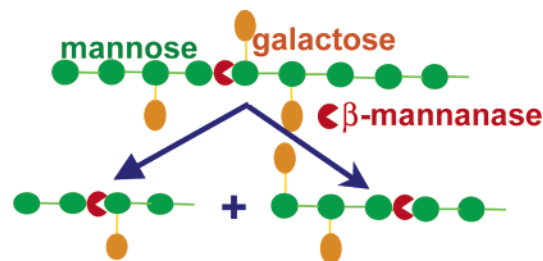
2575 Molecular Orientation Distributions in a Biaxially oriented Poly(L-lactic Acid) Film Determined by Polarized Raman Spectroscopy

Masakazu Tanaka and Robert J. Young*



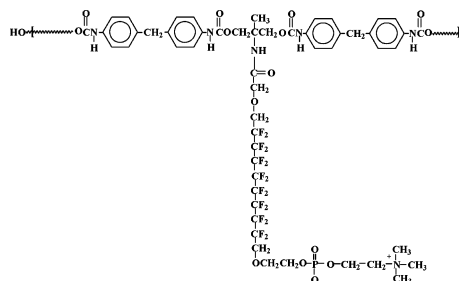
2583 Kinetics of Enzymatic Depolymerization of Guar Galactomannan

Shamsheer Mahammad,
Robert K. Prud'homme,
George W. Roberts,* and Saad A. Khan*



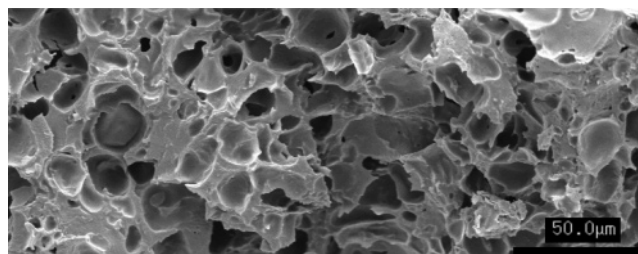
2591 Synthesis and Hemocompatibility of Biomembrane Mimicking Poly(carbonate urethane)s Containing Fluorinated Alkyl Phosphatidylcholine Side Groups

Hong Tan, Jie Liu, Jiehua Li, Xia Jiang,
Xingyi Xie, Yinping Zhong, and Qiang Fu*



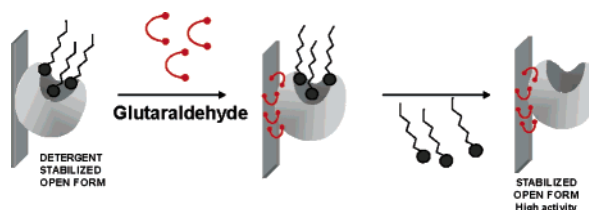
2600 Incorporation of α -Amylase Enzyme and a Bioactive Filler into Hydrophilic, Partially Degradable, and Bioactive Cements (HDBC)s as a New Approach To Tailor Simultaneously Their Degradation and Bioactive Behavior

Luciano F. Boesel,* Helena S. Azevedo, and
Rui L. Reis



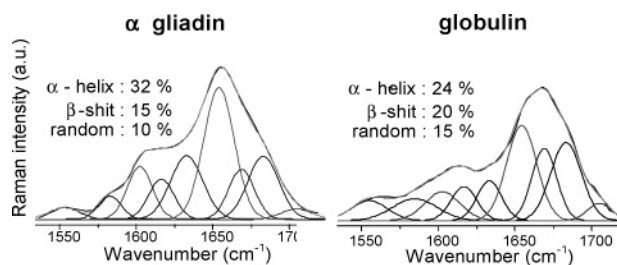
2610 Glutaraldehyde Cross-Linking of Lipases Adsorbed on Aminated Supports in the Presence of Detergents Leads to Improved Performance

Gloria Fernández-Lorente, Jose M. Palomo,
Cesar Mateo, Roberto Munilla, Claudia Ortiz,
Zaida Cabrera, Jose M. Guisán,* and
Roberto Fernández-Lafuente*



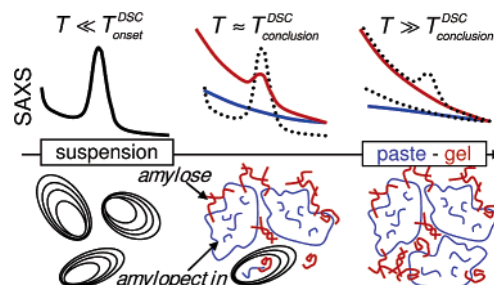
2616 Conformational Modifications of α Gliadin and Globulin Proteins upon Complex Coacervates Formation with Gum Arabic as Studied by Raman Microspectroscopy

Igor Chourpa,* Virginie Ducel, Joël Richard,
Pierre Dubois, and Frank Boury*



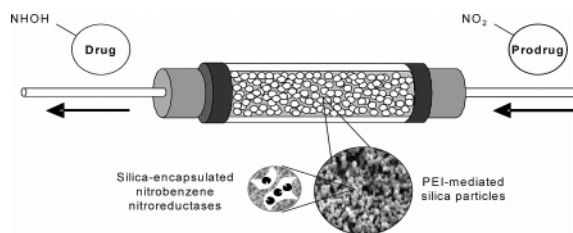
2624 Gelatinization of Starch in Excess Water: Beyond the Melting of Lamellar Crystallites. A Combined Wide- and Small-Angle X-ray Scattering Study

Rudi Vermeylen,* Veerle Derycke,
Jan A. Delcour, Bart Goderis,
Harry Reynaers, and Michel H. J. Koch



2631 Application of a Microfluidic Reactor for Screening Cancer Prodrug Activation Using Silica-Immobilized Nitrobenzene Nitroreductase

Cécile Berne, Lorena Betancor,
Heather R. Luckarift, and Jim C. Spain*



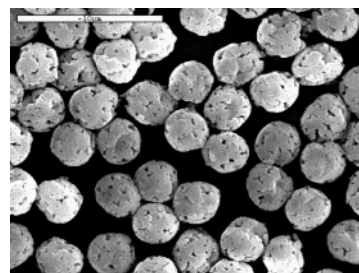
2637 *Acacia senegal* Gum: Continuum of Molecular Species Differing by Their Protein to Sugar Ratio, Molecular Weight, and Charges

Denis Renard,* Laurence Lavenant-Gourgeon,
Marie-Christine Ralet, and Christian Sanchez



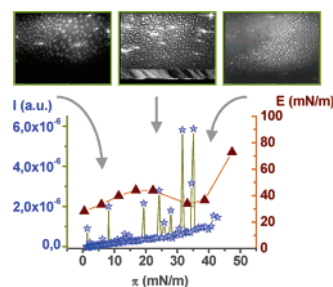
2650 Synthesis and Characterization of New Micrometer-Sized Radiopaque Polymeric Particles of Narrow Size Distribution by a Single-Step Swelling of Uniform Polystyrene Template Microspheres for X-ray Imaging Applications

Anna Galperin and Shlomo Margel*



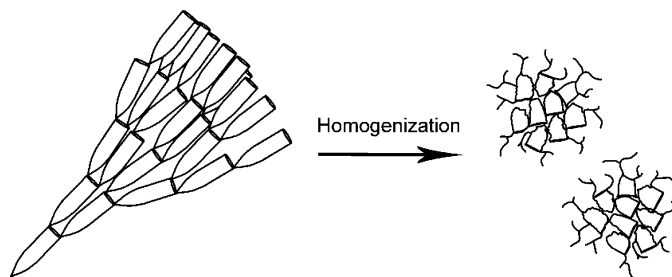
2661 Self-Assembly of Monoglycerides in β -Lactoglobulin Adsorbed Films at the Air–Water Interface. Structural, Topographical, and Rheological Consequences

Juan M. Rodríguez Patino,*
Marta Cejudo Fernández,
M^a. Rosario Rodríguez Niño, and
Cecilio Carrera Sánchez



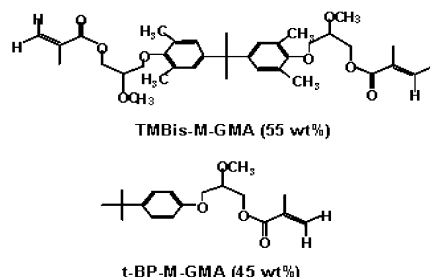
2671 Mechanical Degradation and Changes in Conformation of Hydrophobically Modified Starch

Lars Nilsson,* Mats Leeman,
Karl-Gustav Wahlund, and Björn Bergenståhl



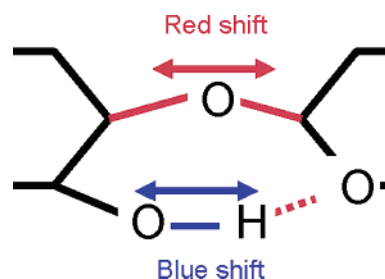
2680 Effects of Molecular Structure of the Resins on the Volumetric Shrinkage and the Mechanical Strength of Dental Restorative Composites

L. U. Kim, J. W. Kim, and C. K. Kim*



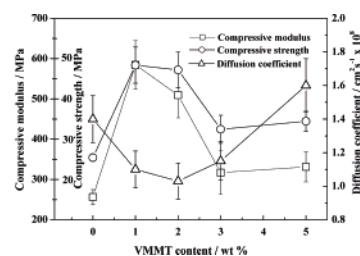
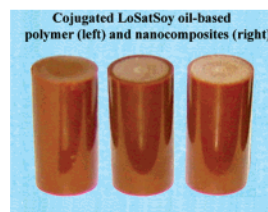
2688 Vibrational Spectroscopy of Biopolymers Under Mechanical Stress: Processing Cellulose Spectra Using Bandshift Difference Integrals

Adriana Šturcová, Stephen J. Eichhorn, and Michael C. Jarvis*



2692 Novel Biobased Nanocomposites from Soybean Oil and Functionalized Organoclay

Yongshang Lu and Richard C. Larock*



■ Supporting Information is available free of charge via the Internet at <http://pubs.acs.org>.

* In papers with more than one author, the asterisk indicates the name of the author to whom inquiries about the paper should be addressed.