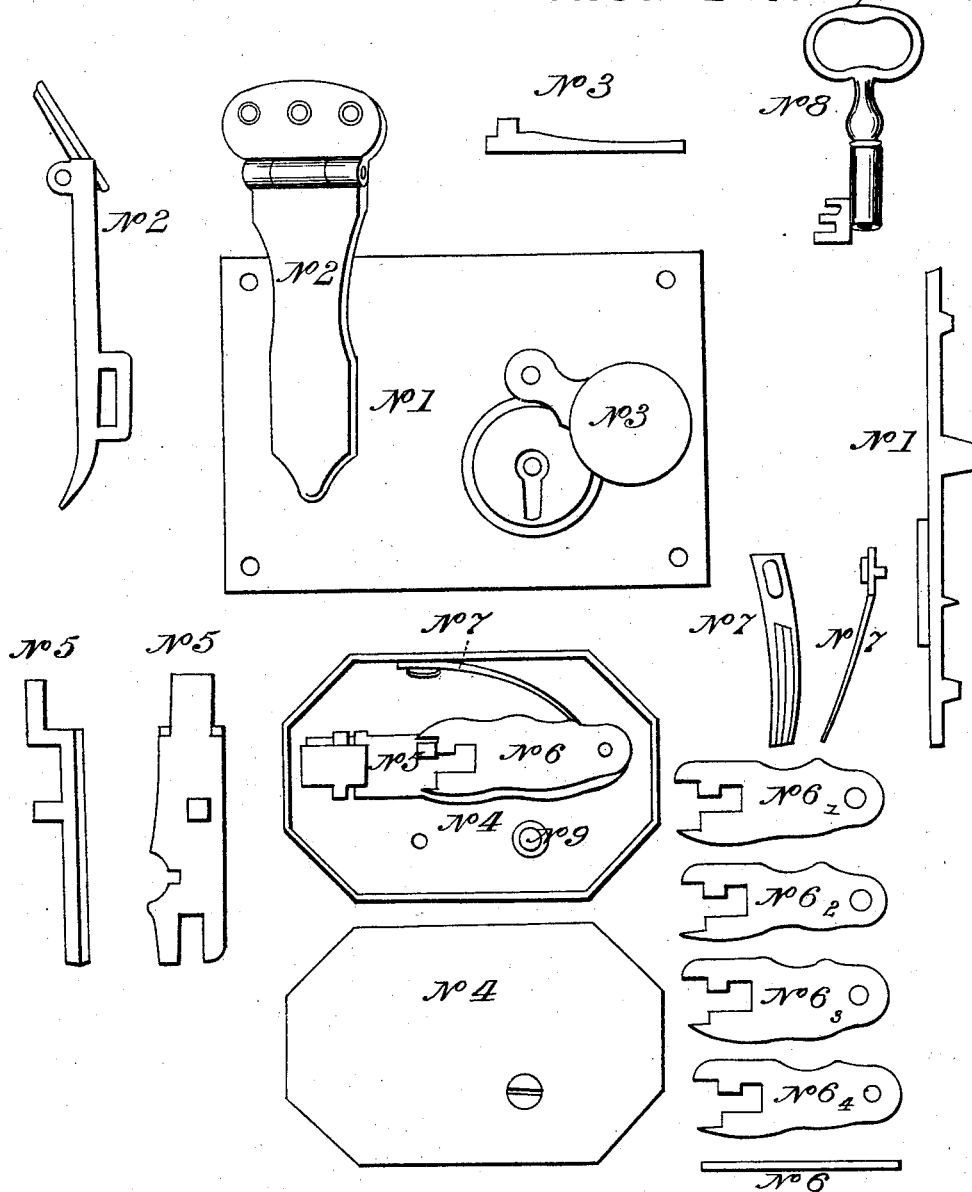


J. Nock,
Trunk Lock,
Nº 976. *Patented Oct. 10, 1838.*



Inventor:
Joseph Nock.

UNITED STATES PATENT OFFICE.

JOSEPH NOCK, OF PHILADELPHIA, PENNSYLVANIA.

TRUNK-LOCK.

Specification of Letters Patent No. 976, dated October 10, 1838.

To all whom it may concern:

Be it known that I, JOSEPH NOCK, of the city of Philadelphia and State of Pennsylvania, have invented a new and Improved Trunk-Lock, and do hereby declare that the following is a full and exact description.

The lock is made of brass and may be made of iron or any other metal and consists of one solid box, four tumblers, one bolt, one spring, one plate, one hasp, and a key, which number of pieces may be increased or diminished according to the number of tumblers that are used. The tumblers are not of new invention but are used in good locks only. The principal improvement for which I claim a patent is in the construction and position of the bolt, it being made with two right angles, which bring that part of the bolt which fastens in the hasp forward from the back part of the lock where it is placed for the better adaptation of the tumblers thereto for safety, as well as for convenience in unfastening the lock for repairs. As the bolt works in a solid piece cast in the box (which prevents a lateral motion) back and front and has a square pin cast near its center for the purpose of effectually securing by the tumblers when locked, it being so adapted by its construction that if the least increase or change in the key other than that strictly fitted for the same used, the bolt cannot be moved, and consequently the lock cannot be opened.

The tumblers as described are fastened with a pin on which they play (*vide* drawing,) may consist of two or more, the larger the number the greater the difficulty in opening the lock without the right key, as all of them must be accurately raised with the key at the same time, otherwise the bolt cannot be moved.

The principal improvement is in the con-

struction and position of the bolt which prevents its being moved, altered, or put out of order.

This lock when adjusted to the trunk by fastenings, which is commonly done with screws or rivets, will admit of being repaired by detaching the cast box which contains the lock as described and which is fastened by one screw only, the lock having no relation to the external plate. The hasp furnished with a hinge has square shoulders so as to prevent its bending below the lid of the trunk, consequently always accommodating itself to the bolt of the lock.

The key must be neat and accurately made of iron or any other kind of metal. It has no letters or words, but requiring to be very exact fitted to the internal structure of the lock. The spring applied to the tumblers is the same as generally applied to the different locks.

The respective parts are shown in the drawing as follows: No. 1, outside plate. No. 2, the hasp. No. 3, the escutcheon. No. 4, the box. No. 5, the bolt. No. 6, the tumblers. No. 7 the spring. No. 8, the key. No. 9, the screw.

What I claim as my invention and desire to secure by Letters Patent, is—

The construction and position of the bolt; by forming the same bent in two right angles which passes the bolt to the hasp from the back part of the lock, the tumblers lying between this bolt and the front of the lock; the position which alone the key with the tumblers can adapt themselves for opening the lock.

JOSEPH NOCK.

Witnesses:

J. HINTZELMAN,
GEO. F. LEHMAN.