

G. H. CROSLLEY.

Chimney.

No. 1,479.

Patented Jan'y 28, 1840.

Fig. 3.

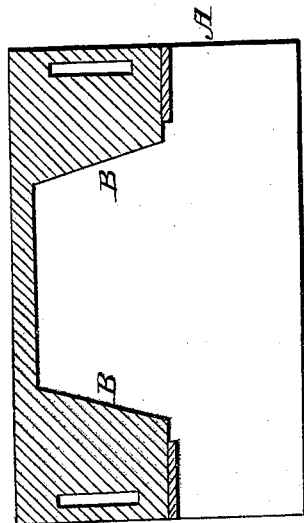


Fig. 1.

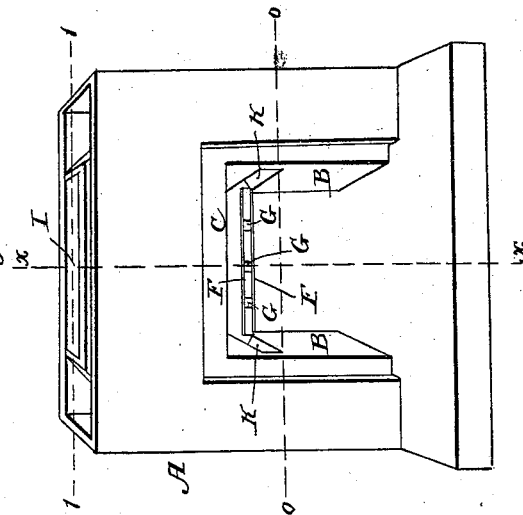


Fig. 4.

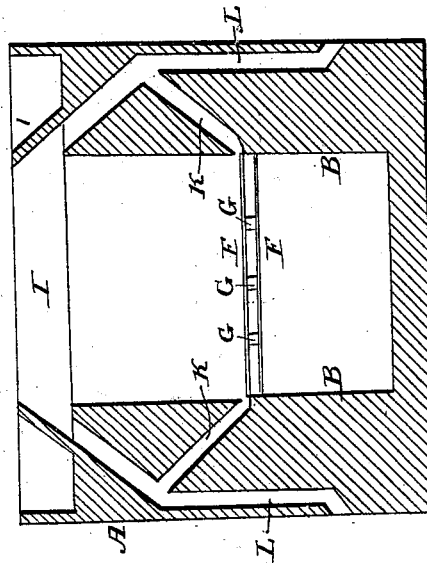
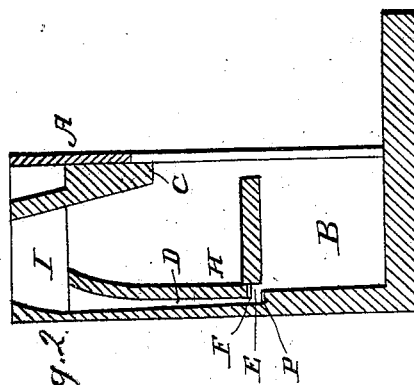


Fig. 2.



# UNITED STATES PATENT OFFICE.

GEORGE H. CROSLY, OF NEW HAVEN, OHIO.

## MODE OF CONSTRUCTING THE DRAFT OF CHIMNEYS.

Specification of Letters Patent No. 1,479, dated January 28, 1840.

*To all whom it may concern:*

Be it known that I, GEORGE H. CROSLY, of New Haven, Huron county, Ohio, have invented a new and useful Improvement in the Construction of Chimneys to Prevent Smoking, which is described as follows, reference being had to the annexed drawings of the same, making part of this specification.

10 The nature of this invention and improvement consists in constructing the jambs of the fire place with two flues in each,—said flues opening into a common funnel communicating with the main flue of the chimney so that the apertures for admitting the air from the fire place and room into the jambs shall open into separate flues instead of opening at once into a common flue, by means of which arrangement a draft will be created through the openings that will aid the draft of the chimney, while in the other case there being but one flue with only apertures in it for admitting the air—the draft through one of those would have a tendency to obstruct the draft through the other.

To enable others to construct and use this invention I will proceed to describe the same.

30 Figure 1 is a perspective view of the hearth, jambs, back, breast, &c. Fig. 2 is a vertical cross section at the dotted line *x x* of Fig. 1. Fig. 3 is a horizontal section at the dotted line *o o* of Fig. 1. Fig. 4 is a horizontal vertical section at the dotted line 1 1 of Fig. 1.

Similar letters refer to similar parts in the figures.

40 Build a chimney A with jambs B of suitable depth and flare, raised about half way the height to the mantel-tree-bar C; then form a flue D in the back having a throat E of two inches, made with two iron bars F F placed one above the other as far apart as the width of the throat, with three stays G in said throat arranged at a proper distance apart having a projection of three fourths of an inch at H—then carried up plumb to the height of the mantel-tree-bar—thence  
50 upward in a sloping direction forward about

8 inches until a suitable enlargement of the back flue be formed and the necessary construction of the front or main flue be formed at the connection with the funnel I. Then form a flue K of two inches draft in each jamb inside the fire place commencing about an inch higher than the flue in the back and without any projection. The contraction or mouth to be  $1\frac{1}{2}$  inch and gradually expanded upward to a capacity of 4 inches said flue running back and then forward in an inclined direction as high as the back and front flues or to the funnel into which it enters. Then construct an outside draft L in each jamb for the admission of air from the room commencing about four inches from the floor with a mouth of about  $\frac{3}{4}$  inch and a space of at least 1 inch until said draft intersects the flue in the jamb with which it unites. The draft in the other or opposite jamb is constructed in a similar manner.

The funnel in a chimney of a three feet back should be at the smaller end about 3 ft. 4 inches in length by 1 ft. 4 inches in width and of suitable height.

I do not claim as my invention constructing the jambs of chimneys with a flue communicating with the main flue of the chimney and with apertures for admitting the air from the fire place and the apartment into the flue as this is not new.

What I claim as my invention and desire to secure by Letters Patent is—

Constructing the jambs with two flues in each the one running into the other as herein set forth, said flues opening at the upper part of the jambs into a common funnel communicating with the main flue of the chimney so that the apertures for admitting the air from the fire place and room into the jamb shall open into separate flues instead of opening at once into a common flue by means of which arrangement a draft will be created through the openings that will aid the draft of the chimney.

G. H. CROSLY.

Witnesses:

EDWD. MAHER,  
W. MAHER.