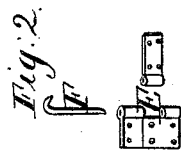
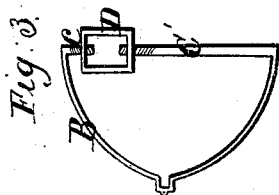


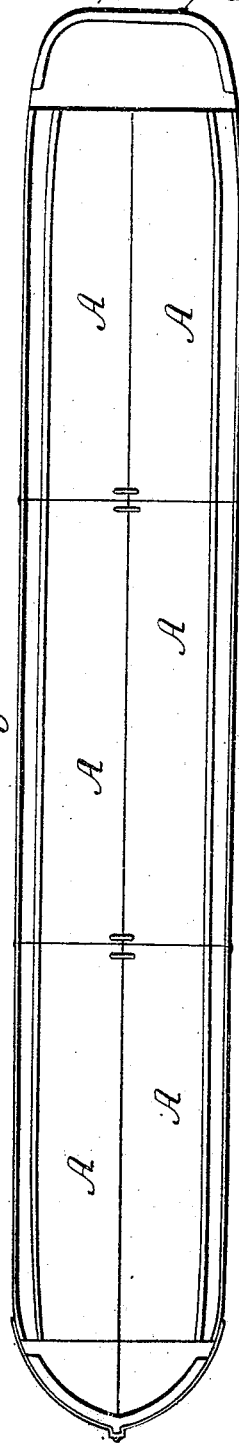
*R. Frazer*  
*Towing*

*N<sup>o</sup> 1,776.*

*Patented, Sept. 10, 1840.*



*Fig. 1.*



# UNITED STATES PATENT OFFICE.

ROBERT FRAZIER, OF WAYNESBURGH, PENNSYLVANIA.

## CONSTRUCTING CANAL-BOATS IN SECTIONS AND MANNER OF UNITING THEM.

Specification of Letters Patent No. 1,776, dated September 10, 1840.

*To all whom it may concern:*

Be it known that I, ROBERT FRAZIER, of Waynesburgh, Mifflin county, State of Pennsylvania, have invented a new and useful Improvement in Canal and Railroad Transportation, which is described as follows, reference being had to the annexed drawings of the same, making part of this specification.

10 The nature of my invention and improvement consists in the mode of fastening together the sections of a canal transportation boat where the sections are placed two abreast and three or more in file.

15 Figure 1 is a top view; Fig. 2 the staples. Fig. 3 is a view of the yoke or bow fastening.

The sections A forming the boat are made like watertight boxes and strung together two abreast and three in file thus forming a boat of six sections which will convey about 20 forty eight tons, as each section will carry about eight tons. The forward sections will be so shaped as when brought together that they will form a convex bow of proper figure. 25 The rear sections will be so shaped as to form a suitable stern. The middle sections will be made square at the ends. The bow and stern sections are held together by iron yokes B shaped to fit them having 30 round bars *c* projecting inward horizontally

and at right angles from the extremities of said yokes and extending inside the sections—one of which *c'* is made longer than the other so as to extend entirely through one section into the other into which latter 35 the shorter one extends and on both of which are cut the threads of screws—one to the right and the other to the left and on which is screwed a large right and left nut D, which when turned to the right draws the 40 sections simultaneously toward each other and when turned to the left they cause them to recede from each other.

The fastenings for the center and sides consist of horizontal eyes and staples E into 45 which are inserted vertical rods F.

The mode of placing the sections on the cars and conveying them over the railway is similar to other modes in use.

What I claim as my invention and desire 50 to secure by Letters Patent consists in—

1. Placing the boats two abreast as described.

2. The mode of fastening the sections together when floating by the yokes and 55 screws as described.

ROBERT FRAZIER.

Witnesses:

WM. P. ELLIOT,  
E. MAHER.