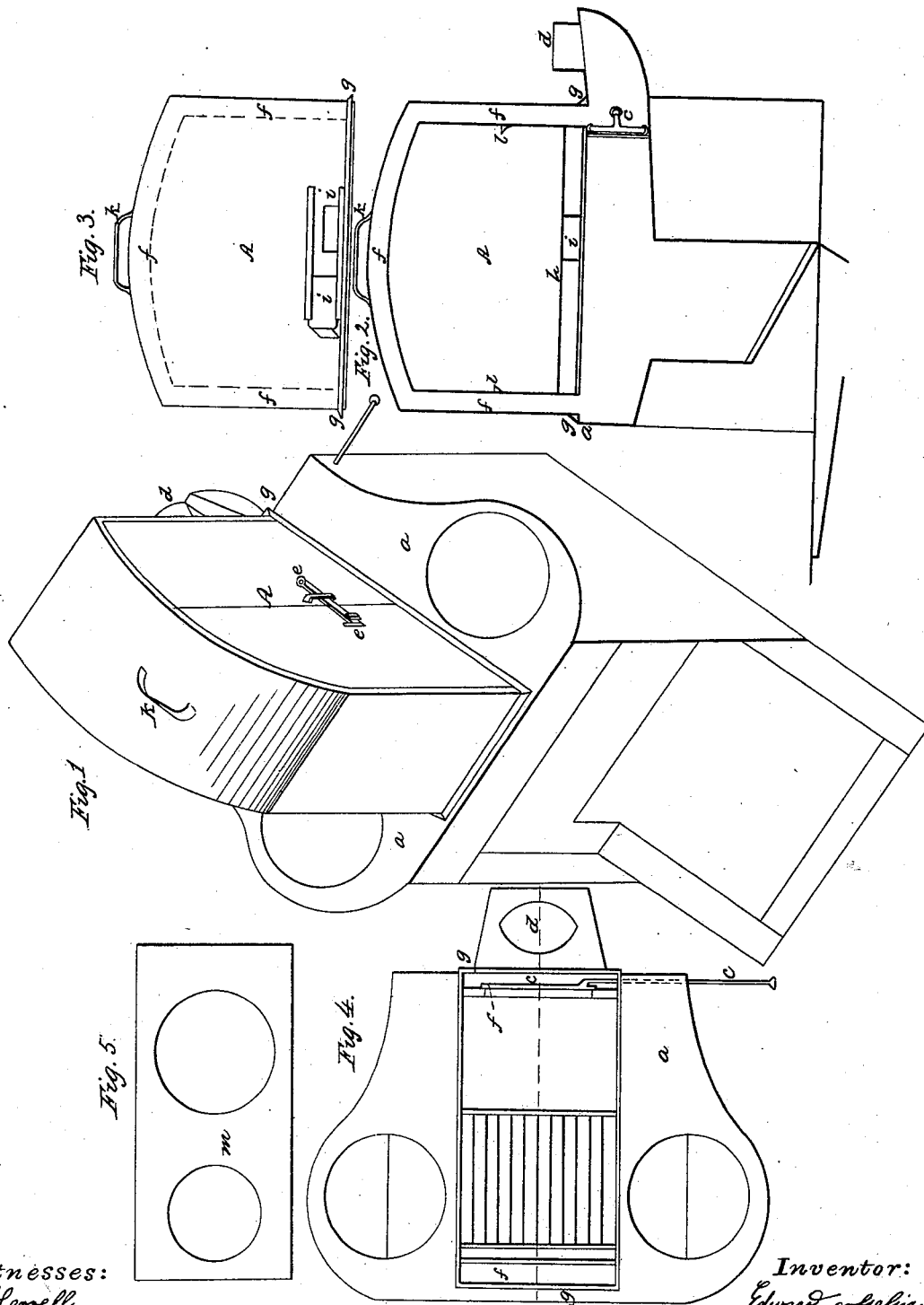


E. GOSSELIN.

Oven.

No. 1,848.

Patented Nov. 7, 1840.



Witnesses:

W. L. Merrill
W. L. Merrill

Inventor:

Edward Goselin

UNITED STATES PATENT OFFICE.

EDWARD GOSSELIN, OF NEW YORK, N. Y.

CONSTRUCTING AND MODE OF COMBINING PORTABLE OVENS WITH STOVES.

Specification of Letters Patent No. 1,848, dated November 7, 1840.

To all whom it may concern:

Be it known that I, EDWARD GOSSELIN, of the city, county, and State of New York, stove maker, have made and applied to use
5 certain new and useful Improvements in the Construction of Metal Shifting Ovens, which may be combined with and adapted to any variety of common stoves for cooking in which the draft passes immediately
10 under the top plate, for which improvement I seek Letters Patent of the United States, and that the said improvements and the mode of constructing, applying, and using the same are fully set forth and shown in
15 the following description and in the drawings attached to and making a part of this specification, wherein—

Figure 1, is a perspective representation of a common stove with the shifting oven
20 upon it as if in use. Fig. 2 is a sectional elevation of the stove and oven shown as if cut through the middle from front to rear in the red line on Fig. 4. Fig. 3 is an elevation of the oven as seen from the side
25 opposite to Fig. 1, and Fig. 4, is a horizontal plan of the top of the stove with the oven fitted in it for use, and the same letters and numbers as marks of reference apply to the same parts in all the several
30 figures.

a, is the top of any common stove with an opening *b*, in which the oven is fitted to stand and at the back of the fire place is a plate between the fire and the flue in this
35 plate is an opening having a common sliding valve or damper *c* and a handle at the back of the stove serving to open or close the passage between the passage and the flue pipe *d*.

40 *A*, is a metal oven shown with two doors *e*, *e*, on one side, or may have one door, with hinges and latch, in the usual manner; the ends and top of this oven are formed with an external shell by which these parts of the
45 exterior are made double, so as to form a flue *f* ascending up one end, passing over the top, and descending at the other end of the oven where it is open to the flue pipe *d* when in use. A foot flange *g*, goes around
50 the lower part of the oven to support it in place upon the stove for use, within the oven

is a lower shelf or false bottom *h* and at the bottom of that part of the oven which is opposite the doors a small opening *i*, with a sliding cover is intended to allow a portion
55 of the heat, from between the bottom and false bottom or lower shelf to pass out, if the oven becomes too hot; a handle *k*, renders the oven portable and a fillet *l*, on each end, in the inside, supports an auxiliary
60 shelf when needed.

To use this oven, the middle cover, or boiler plate *m*, shown detached in Fig. 5, is to be removed, and the oven lifted on, so as to occupy and cover its place, and the
65 damper valve *c*, is to be closed, the heat from the fire will now act, first, under the bottom of the oven and pass up the front flue *f*, over the top, and down the back, going off by the flue pipe *d* and thus the bot-
70 tom, ends, and top, of the oven, will be effectively heated, for the purposes of baking or cooking, and if the oven becomes too hot, the air valve *i* may be partially, or wholly
75 opened, to decrease, or regulate, the operation of the heat from the fire below.

The only alteration required to adapt this oven to any common cooking stove wherein the draft passes under the top plate is to place a vertical plate between the fire and
80 the flue way, this plate is to have a passage, to be opened or closed by a common valve or damper with a handle passing through the side of the stove and the flue passing over the oven must be fitted to descend behind
85 the valve, which being closed will force the draft to pass over the oven, or the valve being opened the draft will pass through the vertical partition, in either case going
90 finally off by the common flue.

What I claim as new and of my own invention and desire to secure by Letters Patent, is—

Not the mere combination of a portable oven with a cooking stove as this is not new,
95 but the combining the oven with the stove in the manner herein set forth, so that the draft from the stove shall pass up on one end of the oven, over the top and down on the opposite end into the common flue of
100 the stove that is to say I claim the combination of an oven constructed in the manner

herein set forth with any cooking stove adapted to receive it and so regulated as to admit the draft either to pass over the oven and thence into the common flue, or to pass
5 directly into the flue without circulating over the oven the whole being constructed, substantially in the manner herein set forth.
In witness whereof I have hereunto set

my hand in the city of New York this twenty third day of June one thousand 10 eight hundred and forty.

EDWARD GOSSELIN. [L. S.]

Witnesses:

G. R. BOWDOIN,
W. TERRELL.