

J. P. Mc Keean,

Window Bolt.

N^o 2,065.

Patented Apr. 24, 1841.

Fig: 2.

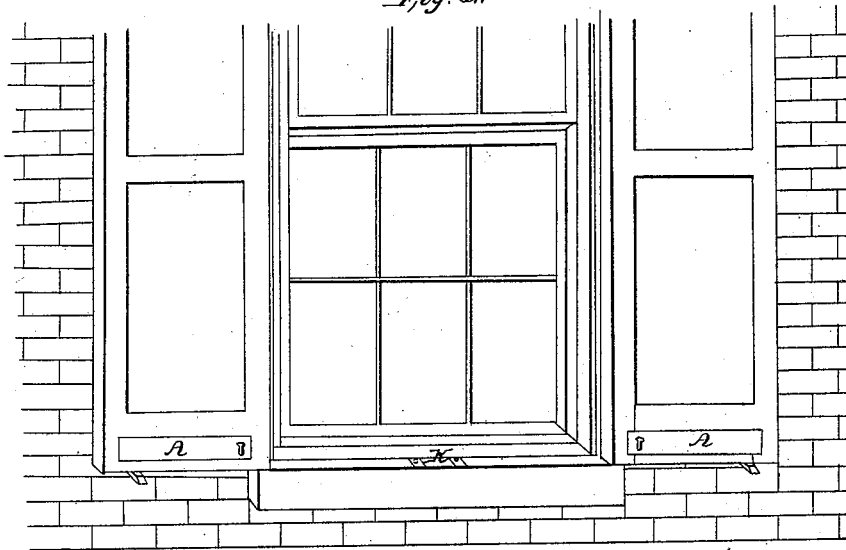


Fig: 1.

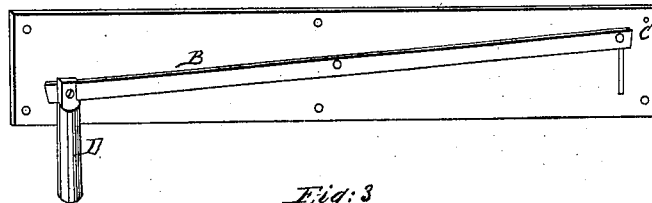


Fig: 3

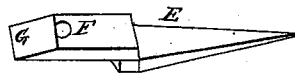
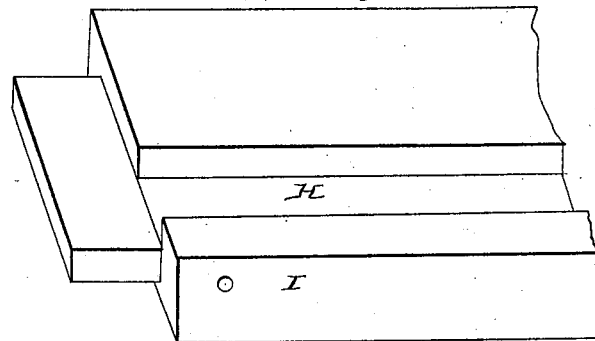


Fig: 4.



UNITED STATES PATENT OFFICE.

JAMES P. McKEAN, OF WASHINGTON, DISTRICT OF COLUMBIA.

FASTENER FOR WINDOW BLINDS AND SHUTTERS.

Specification of Letters Patent No. 2,065, dated April 24, 1841.

To all whom it may concern:

Be it known that I, JAMES P. McKEAN, of the city of Washington, District of Columbia, have invented a new and useful
5 Machine for Fastening Window-Shutters, which I style the "Self-Acting Window-Fastener;" and I do hereby declare that the following is full, clear, and exact description of the construction and operation of the
10 same, reference being had to the annexed drawings, making a part of this specification, in which—

Figure 1, is an inside view of the fastener; Fig. 2, an outside view of the same, attached
15 to a shutter &c.; Fig. 3, is a "catch" to be driven into the side of the house; Fig. 4, shows the bottom rail of a shutter as prepared to receive the "fastener."

The "self acting window fastener" should
20 be made of a plate of thin metal, the length of which will be regulated by the width of the shutter, to allow it to lap onto the stiles, and of such width as to allow full action to the part hereafter described and to lap onto
25 the rail for securing it by screws or otherwise. To this plate, connect by a rivet the bar B Fig. 1. This bar to be about a $\frac{3}{8}$ by $\frac{1}{8}$ and one inch shorter than the rail of the shutter; on one end of which put a thumb
30 screw, passing through a slit in the plate at C, with its head on the opposite side, and on the other end bolt D, secured to the bar, by a screw, allowing it to move freely.

Fig. 3, The "catch" to be made of a piece
35 of metal one end for driving, or otherwise, to be connected to the side of the house. The other end must be beveled, as shown by G for raising the bolt D. With a hole F for it to drop into.

40 E represents shoulders when it is to be driven into the side of the house.

The "catch" must be adjusted to the house so that the bolt will drop into the hole F when the shutter is back to the side of the
45 house. On the window sill, if for a double shutter make two holes, faced with thin strips of metal, to prevent the bolt for wearing it, to receive the bolt when the shutters are closed. See K, Fig. 2.

50 The bottom rail of the shutter must be

grooved its whole length, as shown by H Fig. 4, and deep enough to admit the bar and bolt of the fastener giving them room for a free action; and from the bottom of the rail, make a hole I to enter the groove, 55 that the bolt D, may drop through it freely.

The operation of the "self acting window fastener" is that the bar being connected to the plate, is shown in Fig. 1, it becomes a self acting lever by the weight of the bolt, 60 which will always cause it to drop below the bottom of the shutter (the length of which will be regulated accordingly) and when the shutter is thrown back to the side of the house, the bolt will rise on the bevel edge of 65 the catch and drop into the hole, and secure the shutter. When it is desired to unfasten the shutters, press down the thumb screw which will raise the bolt out of the catch, and in closing the shutter, a similar operation 70 is performed by the bolt raising on the window sill and dropping into the holes, before described, thereby securing the shutters.

The "fastener" will answer for either side shutter, as the bolt D, Fig. 1, can be 75 moved around for this purpose, and should it be necessary in putting the fastener on unscrew the bolt from the bar and pass it up through the hole in the bottom of the rail, and again fasten it to the bar. 80

It is intended that the side of the plate having the bar on it be inserted into the groove made in the bottom rail, thereby securing it from injury and giving a neater appearance, as the "fastener" when on the 85 shutter can be painted with it.

What I claim as my invention, and desire to secure by Letters Patent, is—

The entire construction of the "self acting window fastener" viz., the self acting 90 power of the bar or lever, with the bolt and thumb screw attached to it, together with the "catch," and the application of the whole to fasten window shutters when open or closed.

JAMES P. McKEAN,

Witnesses:

CLEMT. T. COOTE,

ALEXANDER LEE.