

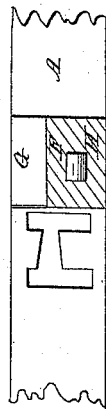
*Stephenson & Edwards,*

*Bank Lock.*

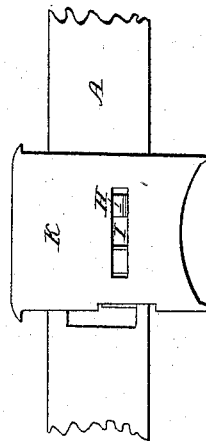
*N<sup>o</sup> 3,543.*

*Patented Apr. 17, 1844.*

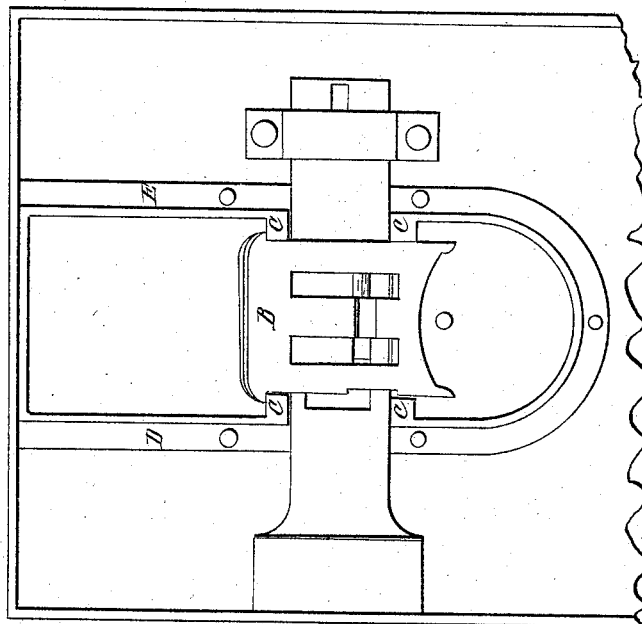
*Fig 2.*



*Fig 3.*



*Fig 1.*



# UNITED STATES PATENT OFFICE.

M. R. STEPHENSON AND O. EDWARDS, OF BOSTON, MASSACHUSETTS.

## COMBINATION DOOR-LOCK.

Specification of Letters Patent No. 3,543, dated April 17, 1844.

*To all whom it may concern:*

Be it known that we, MARCUS R. STEPHENSON and OLIVER EDWARDS, of Boston, in the county of Suffolk and State of Massachusetts, have invented a certain new and useful Improvement in Locks to be Applied to Bank-Vaults, Doors of Safes, &c., and that the following specification of the same, taken in connection with the accompanying drawings, fully sets forth the nature and principles thereof by which it may be distinguished from others of like character.

Figure 1, represents the internal arrangement of the lock to which our improvement is applied.

A, is the main bolt, which has a series B, of sliding plates applied to it, the said plates being kept in requisite position by means of the projections C, C, C, C, from two inner frames D, E, arranged within the lock as seen in the drawing. The main bolt is guided within these frames, and is otherwise supported in the usual manner. It is represented in Fig. 2, as detached from the lock and having a movable plate F, applied to it which rests and slides freely up and down in a wide space or groove G, formed in the bolt and of the width and depth of the plate. The stud H, which usually extends from the bolt, is, in this case applied to the sliding plate F, and when placed in the lock, it extends through a horizontal slot I, of a sliding plate K, as seen in Fig. 3, which is a representation of the plate as placed upon the bolt. The other sliding plates of the series are arranged and operate in the usual manner. The sliding plate K, is to be elevated to the proper position, by means of one

of the bits of the key, and when so raised, as it must also carry the stud H, and sliding plate F, up with it, the stud will be in the position necessary to admit of the recession of the main bolt. As the remaining sliding plates, in the meantime, have also been raised by the key, the bolt, on its recession, will carry the stud with it through the horizontal slots which connect the vertical slots of the different slide plates B. From the above, it will be seen, that, whenever an attempt is made to pick a lock so constructed, it will first become necessary to raise the stud H, to a certain, or its correct position and to there maintain it until the slide plates can be elevated into their respective positions, a process which may be considered an impossibility when we calculate the chances of succeeding therein by any other means than the use of the key which is adapted to the purpose.

Having thus explained our improvement we shall claim—

Arranging the stud H, so as to slide freely up and down (the same being fixed upon a sliding plate F, adapted to a groove G, and combined with the main bolt,) and be operated by the key as set forth, or by any other means substantially similar, the same being for the purpose hereinbefore specified.

In testimony that the above is a correct specification of our improvement we have hereto set our signatures this eighth day of February in the year 1844.

MARCUS R. STEPHENSON,  
OLIVER EDWARDS.

Witnesses:

R. H. EDDY,  
JOHN NOBLE.