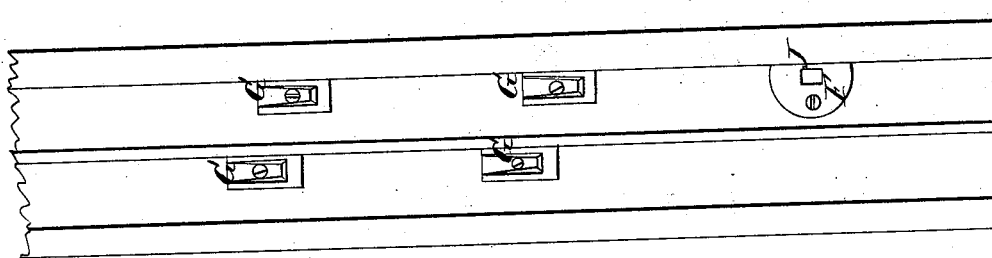


*J. Jones,*

*Sash Holder.*

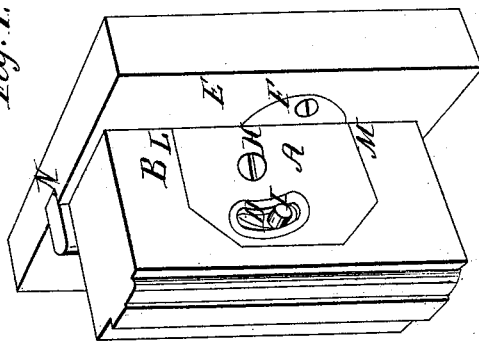
*N<sup>o</sup> 4737.*

*Patented Sep. 3, 1846.*

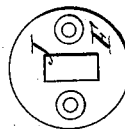


*Fig. 6.*

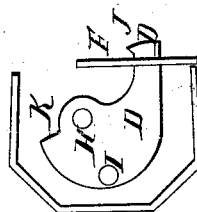
*Fig. 1.*



*Fig. 3.*



*Fig. 2.*



*Fig. 5.*



*Fig. 4.*



*Witnesses:*

*J. B. Hamilton  
J. A. Lechman*

*Inventor:*

*James Jones*

# UNITED STATES PATENT OFFICE.

JAMES JONES, OF ROCHESTER, NEW YORK.

## WINDOW-SASH FASTENER.

Specification of Letters Patent No. 4,737, dated September 3, 1846.

*To all whom it may concern:*

Be it known that I, JAMES JONES, of the city of Rochester, in the county of Monroe and State of New York, have made a new and useful improvement in the manner of constructing sash-fasteners, which are intended to be applied to the upper and lower sashes of windows, as the case may be; and I do hereby declare that the following is a full and exact description thereof.

In the accompanying drawings the first five figures represent certain parts of my apparatus of the full size necessary for use. Fig. 6 shows the inner side of one of the sash frames drawn on a smaller scale, showing the positions in which the parts represented in Figs. 3 and 4 may be let in.

A Fig. 1 is the back plate of the latch or catch which is to engage with the pieces F, and G, that are to be let into the window frame.

D is the latch plate which is placed under the plate A and is shown distinctly in Fig. 2, the back plate A Fig. 1 being removed for the purpose of exhibiting it. The plate D turns on a fulcrum at H and falls forward by its own gravity. The screw H Fig. 1 may serve as its fulcrum and also to attach it to the sash B. The catch D has a hooked end at D' which, when it passes through the mortise J, in the plate F, that is screwed to the sash frame, serves to hold the sash

firmly down, the hook D' catching against the upper end of the mortise J for that purpose.

I is a pin that rises from the catch plate for the purpose of withdrawing the catch. But one plate of the kind shown at F will be required for perfect security; that is, for the purpose of holding the lower sash down; but any number of those marked G may be let into the sash frame, and the end D' of the catch resting on the lower ends of these will sustain the respective sashes at any desired height; in Fig. 6 one of the plates F is shown as let into the sash frame to hold the lower sash down and several of the pieces G, for the purpose of holding the sashes up.

Having thus fully described the manner in which I construct and use my sash fastener, what I claim as new therein and desire to secure by Letters Patent, is—

The employment or use of the catch D with its hooked end in combination with the plate F with its mortise J for the purpose of holding the lower sash securely down, the whole being formed, arranged and combined, substantially as herein set forth.

JAMES JONES.

Witnesses:

W. STEBBINS,  
JOSEPH ALEXANDER,