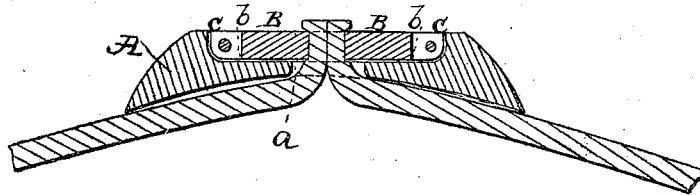


A. C. G. RATHBURN & S. M. COMSTOCK.
BELT COUPLING.

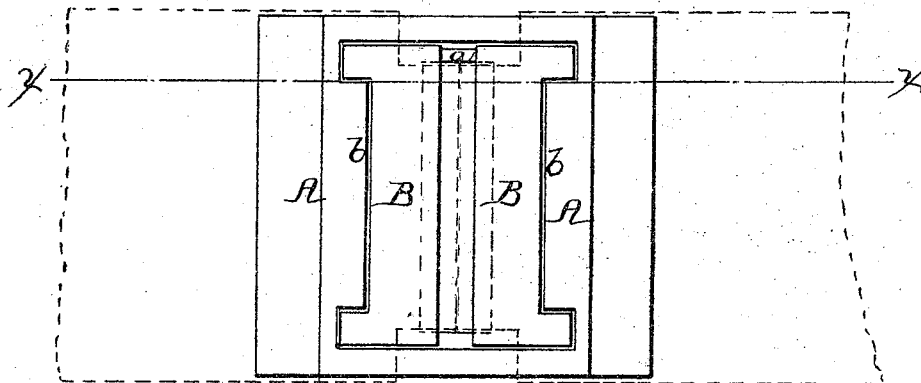
No. 46,264.

Patented Feb. 7, 1865.

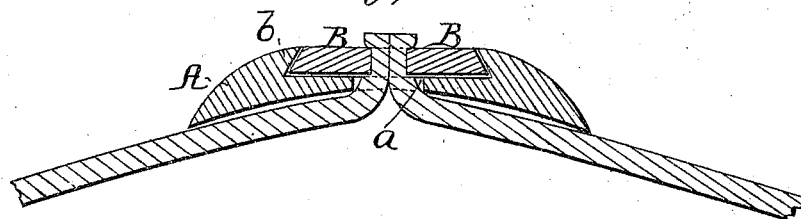
Fig; 1.



Fig; 2.



Fig; 3.



Witnesses;
Wm. Brown
Thos. Busch

Inventors;
A. C. Rathburn
S. M. Comstock
by *Munn & Co*
attys

UNITED STATES PATENT OFFICE.

A. C. G. RATHBURN AND A. M. COMSTOCK, OF LYME, CONNECTICUT.

IMPROVEMENT IN BELT-COUPPLINGS.

Specification forming part of Letters Patent No. 46,264, dated February 7, 1865.

To all whom it may concern:

Be it known that we, A. C. G. RATHBURN and A. M. COMSTOCK, of Hamburg post-office, Lyme township, in the county of New London and State of Connecticut, have invented a new and Improved Belt-Coupling; and we do hereby declare that the following is a full, clear, and exact description thereof, which will enable those skilled in the art to make and use the same, reference being had to the accompanying drawings, forming part of this specification, in which—

Figure 1 is a longitudinal vertical section of this invention, the line *x x*, Fig. 2, indicating the plane of section. Fig. 2 is a plan or top view of the same. Fig. 3 is a longitudinal section of a modification of the same.

Similar letters of reference indicate like parts.

This invention consists in the employment or use of a plate, provided with a slot, to admit the ends of the belt to be coupled and with two toggle-jaws in such a manner that when the jaws are thrown open the ends of the belt can be easily passed up between them, and if the jaws are depressed after the ends of the belt have been adjusted they clamp the same tight, without the use of rivets or any other fastening, and a belt-coupling is effected which leaves the inner or working surface of the belt perfectly flat and intact.

A represents a plate, cast of brass or made of any other suitable material. Its inner surface is slightly curved, so that the same will accommodate itself to the round surfaces of

pulleys or drums over which the belt runs, and it is provided with a slot, *a*, through which the ends of the belt can be passed up freely. On each side of this slot a recess, *b*, is cast into the plate A, to receive one of the toggle-jaws B. The jaws may be connected to the plate A by means of pivots *c*, as shown in Figs. 1 and 2 of the drawings, or the recess may be made V-shaped, to receive the V-shaped ends of the jaws, as shown in Fig. 2. In either case said jaws can be thrown open to admit the ends of the belt to be coupled, and after said ends have been passed up the jaws are depressed, and they act as toggle-arms, clamping the belt firmly between their inner edges, as clearly shown in Fig. 3. The ends of the belt are thus firmly united without the use of rivets or other fastenings. The belt remains perfectly intact and retains its full strength. The operation of coupling the same can be performed in a very short time, and the inner or working surface of the belt remains smooth and even.

Having thus described our invention, we claim as new and desire to secure by Letters Patent—

The plate A, provided with a slot, *a*, and operating, in combination with the toggle-jaws B, substantially in the manner and for the purpose set forth.

A. C. G. RATHBURN.
A. M. COMSTOCK.

Witnesses:

FREDERICK FOSDICK,
H. L. GLADWIN.