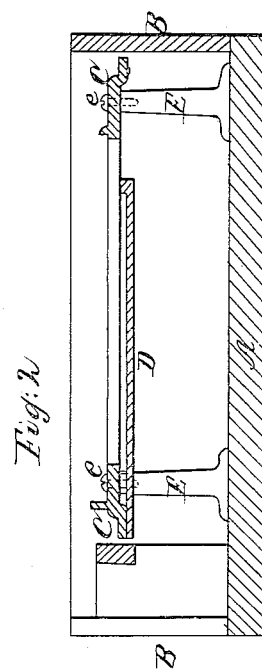
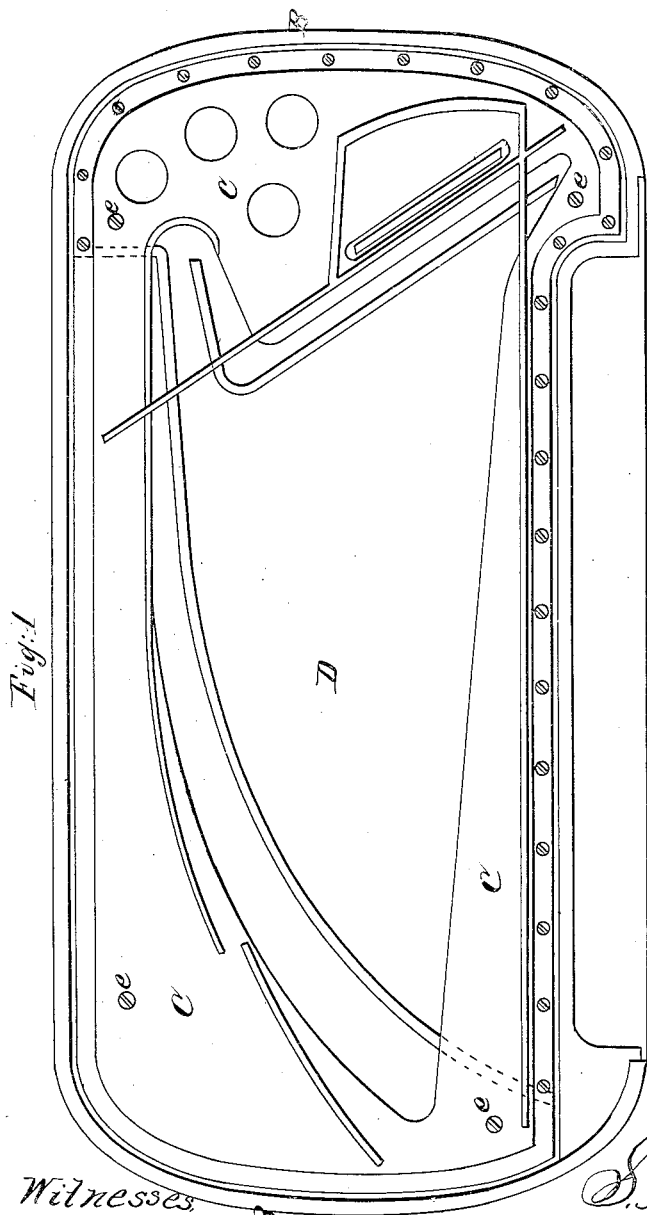


S. T. Parmelee,
Piano,
No. 46,759, Patented Mar. 7, 1865.



Witnesses
Rufus Sanford
Wilson H. Clark

Inventor
S. T. Parmelee
By
John E. Earle

UNITED STATES PATENT OFFICE.

S. T. PARMELEE, OF NEW HAVEN, CONNECTICUT, ASSIGNOR TO THE PARMELEE PIANO COMPANY, OF SAME PLACE.

IMPROVEMENT IN PIANO-FORTES.

Specification forming part of Letters Patent No. **46,759**, dated March 7, 1865.

To all whom it may concern:

Be it known that I, S. T. PARMELEE, of New Haven, in the county of New Haven and State of Connecticut, have invented a new and useful Improvement in Piano-Fortes; and I do hereby declare the following to be a full, clear, and exact description of the same, when taken in connection with the accompanying drawings; and the letters of reference marked thereon, and which said drawings constitute part of this specification, and represent, in—

Figure 1, a top view of an open case, with frame and sounding upon my improved plan; and in Fig. 2, a section through P R of Fig. 1.

The object of my invention is to attain a more perfect, stronger, or prolonged vibration than is possible when either the frame or sounding board or both are in any manner connected with the case; also, greater facility in construction, as the frame-board and strings may be easily removed from the case, as occasion may require, without in the least affecting the tune of the strings; or, if repairs are required to be made, it is a great convenience to be able to remove the board and frame. This cannot be done in ordinary pianos.

My invention consists, first, in the entire isolation of both the metallic frame and the sounding-board from the case; second, in combining and uniting the sounding-board and metallic frame in such manner that they may together be removed from the case without in any manner affecting the strings of the instruments.

To enable others skilled in the art to construct pianos embodying my improvements, I will proceed to fully describe the same, as illustrated in the accompanying drawings.

A is the bottom; B, the case of ordinary construction; C, the metallic frame, and D the sounding-board. The frame is made a little smaller than the interior of the case, as seen in Fig. 1, and rests upon four (more or less) posts, E, to which it is secured by screws *e*. I make the sounding-board sufficiently large only and of the proper form to lie upon the under side of the frame, as seen in Fig. 2, and secure it to the frame by means of screws around the edge of the frame, as seen in Fig. 1, the frame being constructed, as seen in Fig. 2, so that the board comes in contact with the frame only at edge, both frame and sounding-board being entirely independent of the case. Thus constructed, the frame may be strung before being placed within the case, tuned, removed, and replaced, at the pleasure of the workmen or for whatever purpose required.

By the entire isolation of the frame and sounding-board the vibration generated by the strings is confined wholly to the sounding-board, and is consequently more full and long than when the vibration is partially lost in the case, as in the usual construction.

Having therefore fully described my invention, what I claim as new and useful, and desire to secure by Letters Patent, is—

1. The entire isolation of both the metallic frame and sounding, in the manner and for the purpose substantially as specified.

2. Combining and uniting the sounding-board with the frame, substantially as and for the purpose specified.

SPENCER T. PARMELEE.

Witnesses:

JOHN E. EARLE,
RUFUS SANFORD.