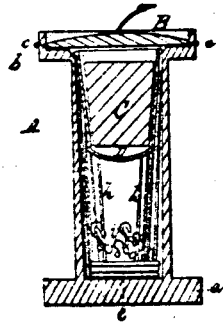
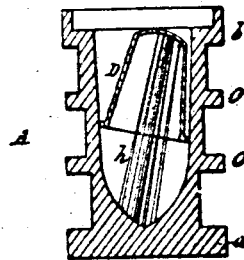


*H. Babcock.*  
*Thread & Needle Box.*  
*N<sup>o</sup> 46868.      Patented Mar. 21. 1865.*

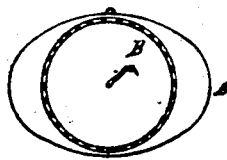
*Fig. 1.*



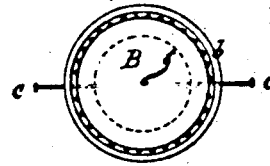
*Fig. 2.*



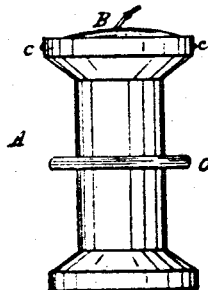
*Fig. 5.*



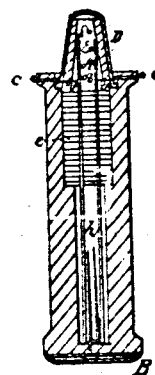
*Fig. 6.*



*Fig. 3.*



*Fig. 4.*



*Fig. 7.*



Witnesses

*Wm. H. H. H.*  
*Wm. H. H. H.*

*Fig. 8.*



Inventor

*Samuel Babcock*

# UNITED STATES PATENT OFFICE

HAMLIN BABCOCK, OF NEW YORK, N. Y.

## IMPROVEMENT IN THREAD AND NEEDLE BOXES.

Specification forming part of Letters Patent No. 46,868, dated March 21, 1865.

### *To all whom it may concern:*

Be it known that I, HAMLIN BABCOCK, of the city, county, and State of New York, have invented a new and useful Improvement in Thread and Needle Boxes for Soldiers and Travelers; and I do hereby declare that the following is a full, clear, and exact description thereof, which will enable others skilled in the art to make and use the same, reference being had to the accompanying drawings, forming part of this specification, in which—

Figure 1 is a vertical section of a thread and needle box made according to the principles of my invention. Fig. 2 is a vertical section of a box which is made with a wooden cover. Fig. 3 is an outside view of a box, which has a circumferential division, so as to make distinct places for threads of different colors or kinds. Fig. 4 is a vertical section of a box made with other modifications. Fig. 5 shows a plan view of a box of oval outline. Fig. 6 is a plan view of Fig. 6. Fig. 7 is a section of the cover seen in Fig. 2, the wax C being removed. Fig. 8 shows a button.

Similar letters of reference indicate like parts.

This invention consists in the construction of a box to contain thread, needles, wax, pins, buttons, and other articles which are necessary or desirable for travelers and other persons away from home, and which have hitherto been carried in receptacles called "housewives," needle-books, and similar arrangements.

A represents the box. It is made open at top, the opening being closed by means of a cover like A', Fig. 2, or one like B, Fig. 1, the latter consisting of a pin-cushion, sometimes called a "bachelor," in which pins are secured by pushing them in radial directions into its edges, as seen clearly in Fig. 6. When the bachelor is used as a cover to the box, it may be held in place by pins c, passing through the sides of the flange b, as seen in Figs. 1 and 2.

The box is made with heads or flanges a and b at its ends, after the style of a spool, so that thread or silk can be wound thereon. The space between the flanges may be divided into divisions by means of other flanges, O, as seen in Figs. 2 and 3, so that different kinds and qualities of thread may be put on the same box. The upper part of the flange b is recessed to receive the bachelor B, or whatever else is to be placed therein. The hollow part or interior of the box is intended

to contain buttons c, hooks and eyes i, needles h, a thimble, D, wax C, or any other articles which are needed in repairing wearing apparel or similar work. I have shown several such articles within the boxes here represented. In Fig. 1 the thimble is inserted so that its rim will rest on the inner edge of the flange b and be thereby supported. This enables me to dispose the needles h around the thimble between its sides and the inner sides of the box, and to put a piece of wax in the thimble. The box is then closed either with a cover like the bachelor B or like the wooden cover A'.

If the wax C is not placed in the thimble or in the bottom of the box, it may be run or pressed into the cover, whose sides are made dovetailed so that they will hold the wax securely.

The buttons may be put in the bottom of the box, the needles resting upon them and some of them passing through the holes of the buttons.

In Fig. 4, I have shown the box so made as to receive the buttons in the upper part resting upon a shoulder therein and the longer needles passing through the buttons and so holding them in place. Another shoulder is made at the upper end of the box for the purpose of receiving the rim of the thimble, which in that case forms a cover to the box. A piece of wax, C, may be placed in the thimble, as shown in Fig. 4. I attach a string to the cover A' or to the bachelor B to enable one to handle it with facility.

The modifications here shown embrace or are founded upon the same principles of construction. Other modifications will suggest themselves to the fancy or judgment of those who make or use such articles, but I have not thought it necessary to particularize any further changes than are here shown.

The bachelor for pins may be secured to the bottom of the box, as in Fig. 4, when a cover, A', is used to close the box, or when the thimble is set over it, as in that figure.

I claim as new and desire to secure by Letters Patent—

A thread and needle box for soldiers and travelers, constructed of a hollow spool adapted to have thread wound upon its exterior and to contain thimble, needles, buttons, or other articles, substantially as above described.

Witnesses: HAMLIN BABCOCK.

M. M. LIVINGSTON,  
C. L. TOPLIFF.