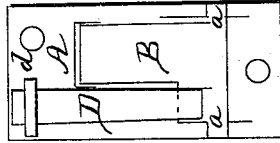


*E. K. Breckenridge,*

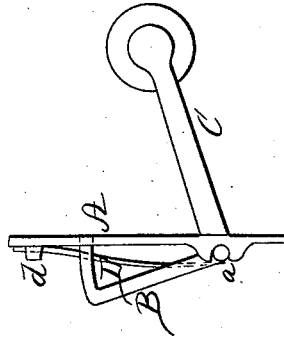
*Sash Fastener.*

*N<sup>o</sup> 46,874. Patented Mar. 21, 1865.*

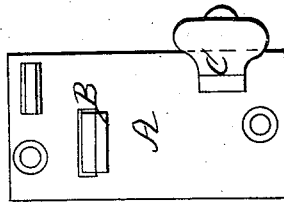
*Fig. 4.*



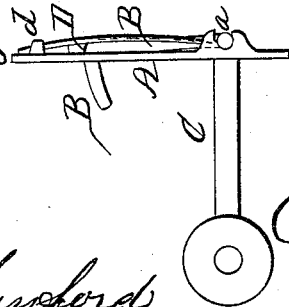
*Fig. 3.*



*Fig. 2.*



*Fig. 1.*



*Witnesses:*

*Refus Sanford*  
*Chas. N. Jacobs*

*Inventor:*

*E. K. Breckenridge*  
*By*  
*John E. Carr*

# UNITED STATES PATENT OFFICE.

E. K. BRECKENRIDGE, OF MERIDEN, CONNECTICUT.

## IMPROVED WINDOW-SPRING.

Specification forming part of Letters Patent No. 46,874, dated March 21, 1865.

*To all whom it may concern:*

Be it known that I, E. K. BRECKENRIDGE, of Meriden, in the county of New Haven and State of Connecticut, have invented a new and useful Improvement in Window-Springs; and I do hereby declare the following to be a full, clear, and exact description of the same, when taken in connection with the accompanying drawings and the letters of reference marked thereon, and which said drawings constitute part of this specification, and represent, in—

Figure 1, a front side view; Fig. 2, a face view; Fig. 3, a back side view, and in Fig. 4 a rear view.

Same letters indicate corresponding parts in the several figures.

My invention relates to improvements in that class of window-springs which are designed to apply to the window-frames for the purpose of holding or securing the sash up or down at any required point.

To enable others skilled in the art to construct and use my improved window-spring, I will proceed to fully describe the same as illustrated in the accompanying drawings.

A is the face-plate, by which the spring is secured to the frame; B, the latch, cast with trunnions or pivots *a a*, which rest in open bearings cast upon the plate A. A lever, C, formed upon or attached to the latch B, extends through the plate A and terminates in a knob or other convenient device for oper-

ating the latch. D is a spring secured to the plate A by being passed under a yoke, *d*, cast upon the plate for the purpose. The lower end of the spring bears upon the latch B, as seen in Figs. 1 and 3, to force the latch out, as in Fig. 1, in which position, striking into a notch in the sash prepared for the purpose, retains the sash in that position until released by raising the lever, as in Fig. 3, which draws the latch from its hold upon the sash, in which position the sash may be moved as desired until the spring or latch is released and allowed to fly out, as in Fig. 1, catching another notch in the sash in the usual manner for window-springs of this nature.

By this construction of the plate and latch they are finished sufficiently to put together as they come from the foundry, simply requiring to place the latch in its place and insert the spring. The necessity of drilling or other mechanical operation is entirely avoided, an extremely cheap, simple, and durable window-spring produced.

Having therefore fully described my invention, what I claim as new and useful, and desire to secure by Letters Patent, is—

The combination of the plate A, latch B, and spring D, constructed, as described, to operate in the manner specified.

E. K. BRECKENRIDGE.

Witnesses:

JOHN E. EARLE,  
RUFUS SANFORD.