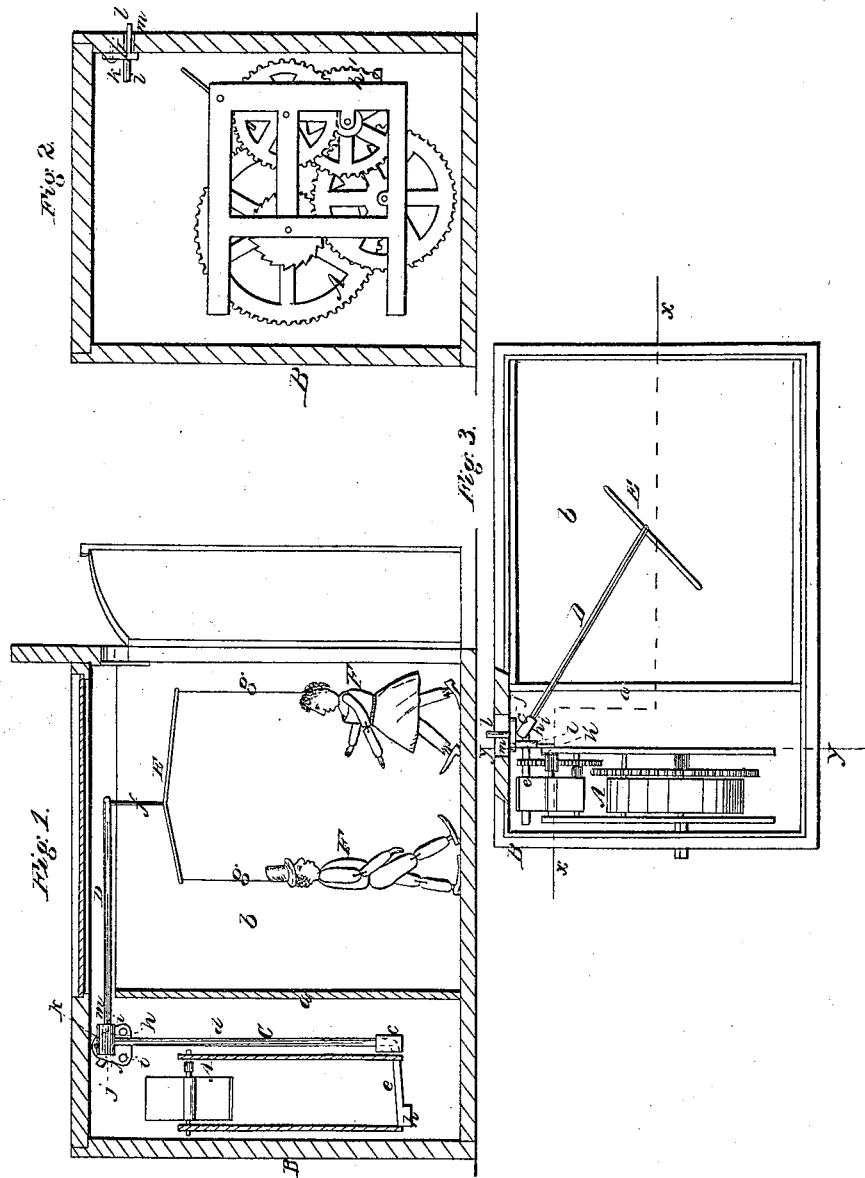


J. M. Cromwell,
Automatic Toy,
No 46,997, Patented Mar. 28, 1865.



Witnesses
M. M. [illegible]
R. L. [illegible]

Inventor
Jas M Cromwell

UNITED STATES PATENT OFFICE.

JAMES M. CROMWELL, OF NEW YORK, N. Y.

DANCING TOY.

Specification forming part of Letters Patent No. 46,997, dated March 28, 1865.

To all whom it may concern:

Be it known that I, JAMES M. CROMWELL, of the city, county, and State of New York, have invented a new and Improved Dancing Toy; and I do hereby declare that the following is a full, clear, and exact description thereof, which will enable others skilled in the art to make and use same, reference being had to the accompanying drawings, forming part of this specification, in which—

Figure 1 is a vertical section of my invention, taken in the line *xx*, Fig. 3; Fig. 2, a vertical section of the same, taken in the line *yy*, Fig. 3; Fig. 3, a plan or top view of the same, the top of the case or box being removed.

Similar letters of reference indicate like parts.

This invention relates to a new and improved toy composed of dancing figures; and it consists in suspending the figures to the operating mechanism, and constructing the latter in such a manner that the figures will, when the device is put in operation, have the grotesque motions peculiar to the ordinary Ethiopian or negro dancers.

A represents an ordinary clock-movement, which is placed within a box or case, B, which has a vertical partition plate, *a*, placed within it to shut off the clock-movement from the compartment *b*, in which the figures dance. This clock-movement may be operated by a spring, as that is a more compact motor than a weight, the spring being wound up by a key from the outer side of the case.

C represents a bent lever, the fulcrum *c* of which is at its angle, the longer arm, *d*, of said lever having an upright position and the shorter one, *e*, a horizontal one, or nearly so. (See Fig. 1.) To the upper end of the arm *d* there is attached a horizontal arm, D, which extends over the upper part of the chamber *b* of the case B, and has a rod, E, suspended to it by a cord, *f*, and each end of the rod E has a figure, F, suspended to it by a cord, *g*. These figures should have jointed limbs, in order that they may have a natural free movement, and they are suspended at such a height that their feet will just touch or rest lightly upon the bottom of the compartment *b*.

The lever C has weights or counterpoises attached to it at one or both ends, a slight preponderance being allowed the upper part of said lever. This lever is actuated by a wheel, *h*, of the clock-movement, the teeth of said

wheel forcing down the short arm, *e*, and the gravity of the longer arm, *d*, with its attachments, bringing it back. By this means a vibrating movement is given the lever C and motion communicated to the figures, which will have a grotesque dancing motion like life.

In consequence of the figures being suspended from the ends of the rod E and the latter suspended by a cord from the end of arm D, the figures when in motion are kept at all times at a requisite distance apart, and allowed while dancing to turn in a similar way to that performed by persons dancing in pairs or couples.

I would remark that one or more rods, E, may be attached to the arm D, and consequently two or more pairs or couples operated by one and the same motion.

The vibration of the lever C may be modified, as desired, to increase or decrease the movement of the figures, or to stop the movement entirely, by means of two prongs or rods, *i i*, between which the longer arm, *d*, of the lever works. These prongs or rods are attached to a button, *j*, the upper end of which is secured by a screw or pivot, *k*, to the inner side of the case A, and has a rod, *l*, projecting from its rear side through an oblong slot, *m*, in the side of the case. This button *j* is moved or adjusted by shoving the rod *l*, and the prongs or rods *i i* may be adjusted in a horizontal or a more or less oblique line, according to the vibration the lever C is required to have, or said lever may by said adjustment of the prongs or rod be stopped entirely.

I claim as new and desire to secure by Letters Patent—

1. The employment or use of the lever C, with arm D attached, in connection with one or more rods, E, suspended to D, and figures F, suspended to E, substantially as and for the purpose specified.

2. The employment or use of a clock-movement, in combination with the figures, when the latter are operated from the former in the manner substantially as set forth.

3. The adjustable prongs or arms *i i*, in combination with the lever C, for the purpose of controlling or regulating the vibration of the latter, for the purpose specified.

JAS. M. CROMWELL.

Witnesses:

M. M. LIVINGSTON,
C. L. TOPLIFF.