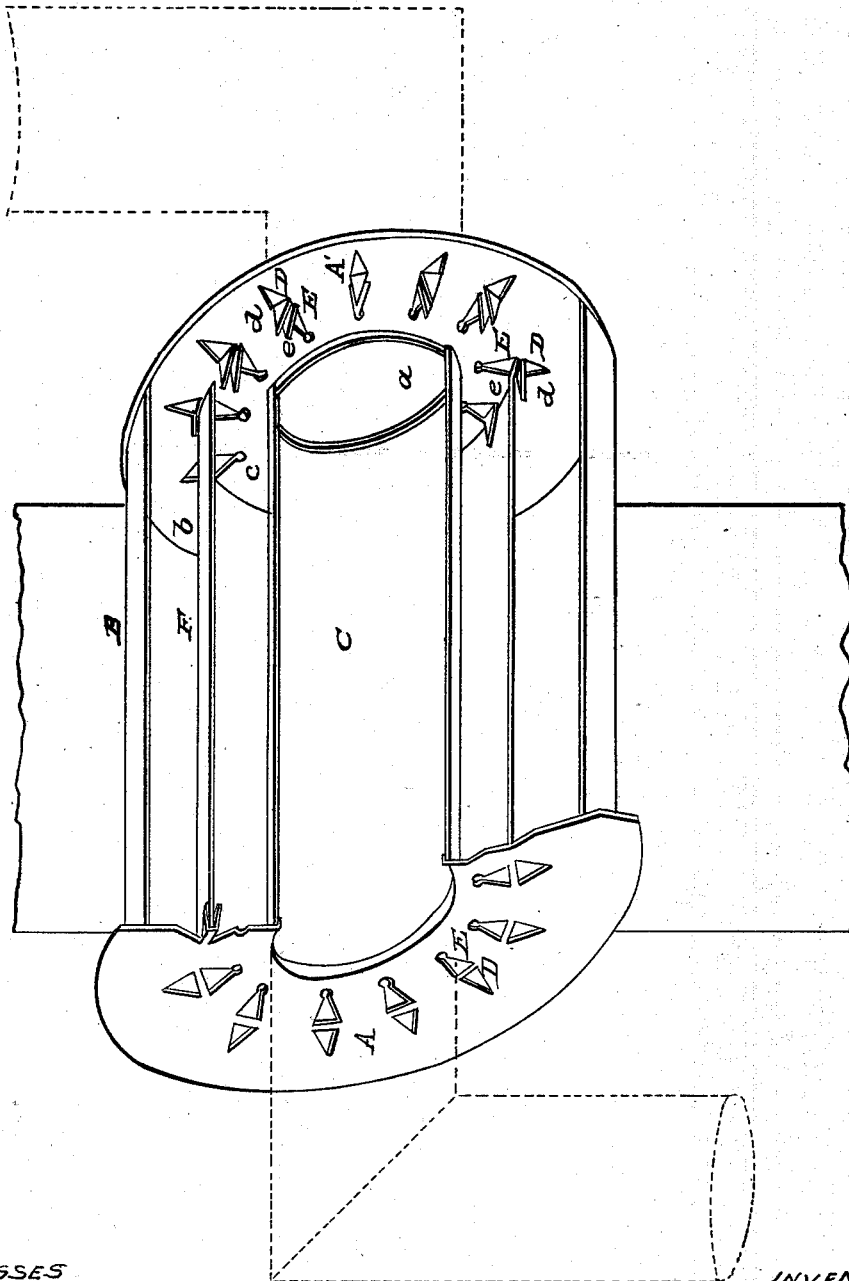


S. W. BARTHOLEMEW.

Stove Pipe Thimble.

No. 49,494.

Patented Aug. 22, 1865.



WITNESSES

*C. L. Fisher*  
*James H. Layman*

INVENTOR

*S. W. Bartholemew*  
*By Knight Bros.*  
*attys*

# UNITED STATES PATENT OFFICE.

SETH W. BARTHOLOMEW, OF BURR OAK, MICHIGAN.

## STOVE-PIPE THIMBLE.

Specification forming part of Letters Patent No. 49,494, dated August 22, 1865.

*To all whom it may concern:*

Be it known that I, SETH W. BARTHOLOMEW, of Burr Oak, St. Joseph county, Michigan, have invented a new and useful Stove-Pipe Thimble; and I do hereby declare the following to be a full, clear, and exact description thereof, reference being had to the accompanying drawing, making a part of this specification.

My invention relates to a peculiar construction of concentric tubes inclosing a series of annular chambers or jackets, which, while wholly disconnected from each other, each communicate freely both with the interior and with the exterior of the edifice.

The accompanying drawing is a perspective view of my thimble, a portion being broken away so as to expose the interior.

A A' are two circular heads, having each a central circular aperture, *a*. The heads A A' are united to and inclose two cylinders, B and C, of which the cylinder B corresponds to and unites with the heads A A' at or near their outer margins, while the cylinder C corresponds to and unites with the margins of the apertures *a*. Each head has a number or series of perforations, D, which communicate with the

annular space or jacket *b* between the outer cylinder, B, and an interior or intermediate cylinder, F, concentric with cylinders B and C, and another series of perforations, E, which communicate in like manner with another annular space or jacket, *c*, between the said cylinder F and the central cylinder, C. The perforations D and E are formed by punching inward of the lips *d* and *e*, and these lips serve the purpose of holding in its place the intermediate cylinder, F. The bending inward of the lips *d* and *e* is therefore made to serve the double purpose of holding the intermediate cylinder, F, and of securing the two series of air-openings D and E.

Having described my invention, what I claim as new, and desire to secure by Letters Patent, is—

The stove-pipe thimble composed of the annular heads A A', cylinders B C, perforations D E, lips *d e*, and intermediate cylinder, F.

In testimony of which invention I hereunto set my hand.

SETH W. BARTHOLOMEW.

Witnesses:

R. I. SEAMAN,  
N. H. SOULE.