

E. D. Coffee,

Shoe Sole,

N^o 49,723.

Patented Sep. 5, 1865.

Fig. 2.

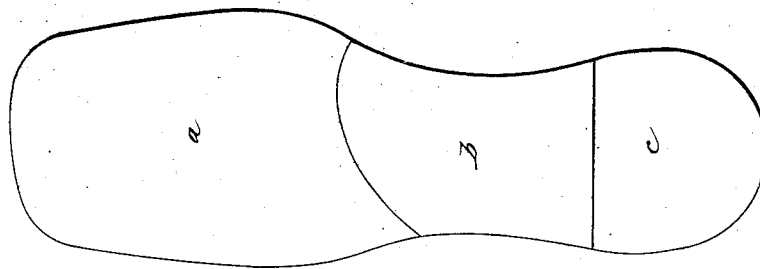
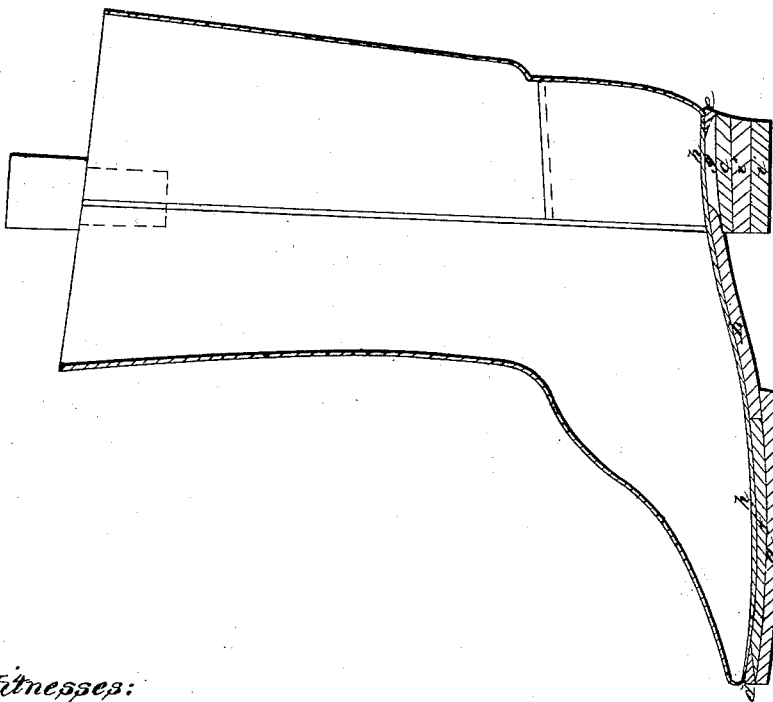


Fig. 1.



Witnesses:

J. P. Hale
Frederick Buntz

Inventor:

Earle D. Coffee

by his attorney
R. H. Ledy

UNITED STATES PATENT OFFICE.

EARLE D. COFFEE, OF HOLLISTON, MASSACHUSETTS.

IMPROVEMENT IN BOOTS.

Specification forming part of Letters Patent No. 49,723, dated September 5, 1865.

To all whom it may concern:

Be it known that I, EARLE D. COFFEE, of Holliston, in the county of Middlesex and State of Massachusetts, have invented a new and useful Improvement in the Manufacture of Boots or Shoes; and I do hereby declare the same to be fully described in the following specification and represented in the accompanying drawings, of which—

Figure 1 denotes a longitudinal section of a boot as constructed in accordance with my invention. Fig. 2 is a bottom view of it.

The invention in question is an improvement in making what is termed a "tapped" boot or shoe. It not only effects an important saving in sole-leather in comparison with what is required in making a boot or shoe with one continuous sole arranged between the inner sole and the tap or taps, but it produces a much lighter and more agreeable boot or shoe for summer wear.

In carrying out my invention I form the outer sole, the shank, and the inner heel-lift in three separate pieces of leather, *a b c*, and I arrange them so that the shank-piece *b* shall be overlapped by each piece of the other two.

Instead of making the shank-piece *b* in one piece with the sole or layer of leather which is affixed directly against the upper when lasted, I apply or arrange a welt, *d*, between the upper and tap and sole, and cause such welt to extend around the boot from one side of the

shank to the other side thereof. The space within the welt or encompassed by it I fill with a mass, *f*, of cork, or other suitable material less expensive than the same amount of leather used in the outer or tap sole, *a*. At the heel, also, I apply a welt or runner between the inner lift and the upper leather, and so as to extend around the heel, and have its two ends abut against the shank-piece *b*. The space within the heel-welt or runner I fill with a mass of leather or other suitable material cheaper than the leather ordinarily used in making the heel-piece *c*.

The tap *a* and the heel-lift *c* are to be applied to the shank *b*, as shown in Fig. 1, and the welts *d e* and the upper and insole and tap-sole and lift *c* may be secured together by sewing or by pegs or nails, as may be desirable, after which the remaining heel-lifts *i i*, in such number as may be necessary to complete the heel, may be built on the lift *c* and one another in the ordinary way.

I claim as my invention—

The improved mode of making the outer sole of a tap boot or shoe—viz., of the separate pieces *a b c*, the welts *d e*, and the fillings *f g*, arranged and applied together and with respect to the insole *h* substantially as described.

EARLE D. COFFEE.

Witnesses:

R. H. EDDY,
F. P. HALE, Jr.