

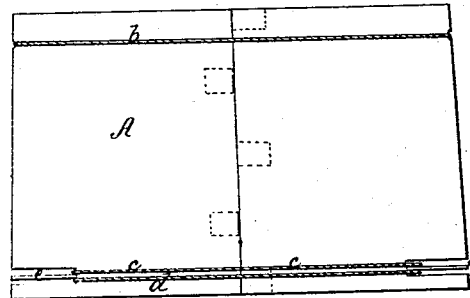
*J. H. Doolittle,*

*Fruit Basket,*

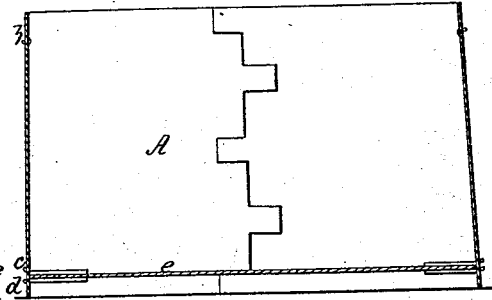
*N<sup>o</sup> 49,866.*

*Patented Sep. 12, 1865.*

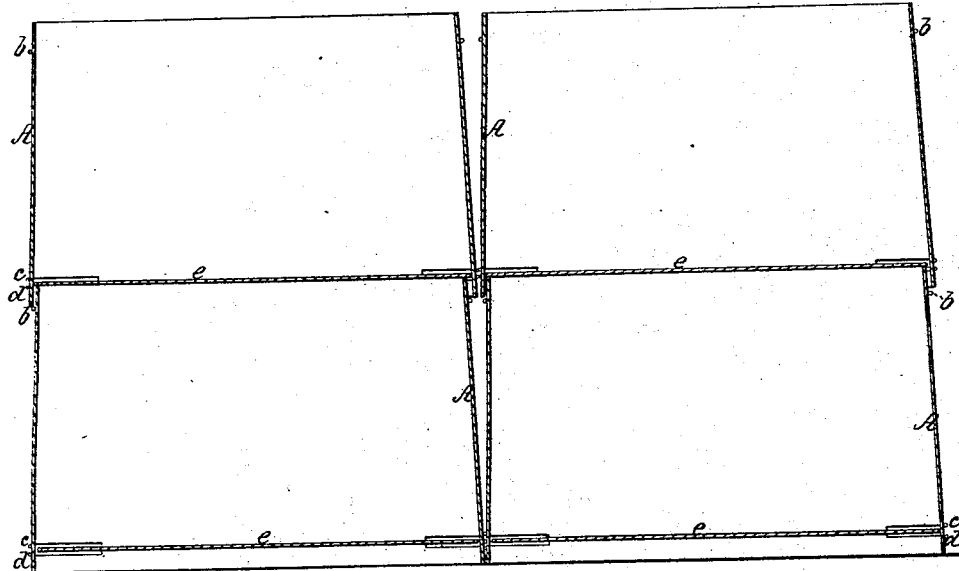
*Fig. 1.*



*Fig. 2.*



*Fig. 3.*



*Witnesses;  
Charles Spear  
M. E. Janvier*

*Inventor;  
J. H. Doolittle.  
By his attorney  
J. A. Mc Intire*

# UNITED STATES PATENT OFFICE.

JOHN H. DOOLITTLE, OF ANSONIA, CONNECTICUT.

## IMPROVEMENT IN FRUIT BOXES OR BASKETS.

Specification forming part of Letters Patent No. 49,866, dated September 12, 1865.

*To all whom it may concern:*

Be it known that I, JOHN H. DOOLITTLE, of Ansonia, New Haven county, in the State of Connecticut, have invented certain new and useful Improvements in Fruit Boxes or Baskets; and I do hereby declare that the following is a full and exact description thereof, reference being had to the accompanying drawings, making part of this application.

My present invention relates to an improvement in fruit boxes or baskets, having for its object to render such boxes or baskets capable of being packed in crates without the use of any partition-boards, and also without any liability of injury to the contents of the boxes.

Previous to my invention numerous kinds of fruit boxes and baskets have been suggested, patented, and used in the market, many of which (like my improved box) have been formed of thin board or strips of veneer, which is a very desirable method of construction in many respects; but with this kind of boxes it has been found necessary, in packing a number of them in a crate for transportation, to employ horizontally-arranged partition-boards, placed one over each layer or stratum of boxes to support the next layer of boxes and to prevent the boxes from slipping partially into each other and mashing the berries or contents thereof. It will be understood that when a number of boxes made as heretofore were put into a crate without any partition-boards a very slight displacement or derangement of a box laterally would allow it (being formed of thin stuff) to dip or descend partially into the box below it.

This objection, heretofore existent in most kinds of fruit-boxes, is entirely overcome by my invention, which consists in making the box slightly tapering inwardly from the bottom toward the top, in such manner that a series of boxes of the same size may be packed in a crate or otherwise with the lower edge of each box surrounding, and the bottom thereof resting on, the top edge of the box placed immediately beneath it, as will be presently more fully explained.

To enable those skilled in the art to make and use my invention, I will proceed to describe the construction and operation thereof, referring by letters to the accompanying drawings, forming part of this application, and in which—

Figure 1 is an elevation of one of my improved fruit-boxes. Fig. 2 is a vertical central section of the same; and Fig. 3 is a similar section of a series of such boxes as they appear packed together.

In the several figures the same letter of reference designates the same part.

I take a strip of thin board or veneer cut in the proper shape and bend it around to form the sides or contour of the box, as seen at A, having first made suitable slots and notches for the accommodation of the binder and bottom-supporting cords *b c d*. After securing the sides A by means of the cords *b* and *c*, I place the bottom-board *e* in and then put on the retaining cord or band *d*. The construction of the box, as thus far explained, is similar to that made the subject of another application for Letters Patent by me, in which it will be found minutely described.

The strip of veneer of which the sides A of the box are formed is so cut and bent into shape as to make the top edge of the box a little smaller than the bottom edge.

I prefer to make external contour of the top edge a shade smaller than the internal contour of the bottom edge, so that by taking two boxes and placing one over the other they will fit together, as shown at Fig. 4.

The bottom-board *e* is arranged a short distance above the lower edge of the box, so that when the boxes are packed together they will interlock, each one over the one under it, as clearly shown at Fig. 3. Of course the contour of the box may be varied from that shown to any desired form—either polygonal, round, or oval.

Although I have shown my invention in connection with a mode of construction of the box of a bent strip tied together with strings, and its bottom supported and retained by means of strings, it will be understood that the characteristic feature of my present invention—viz, the idea of forming the boxes tapering and so as to interlock and pack together, as described—may be embodied with great and perhaps equal advantages in other kinds of boxes formed in a manner entirely different from that shown in this application.

It will be seen that by my invention I am enabled to pack the boxes in large quantities

or numbers in crates or large boxes for transportation without the use of any partition or separation boards, and that the bottom-board of each box will take a complete bearing upon the entire top edge of the box below it, and the whole series be matched together in vertical tiers.

It may be deemed an additional advantage to have the boxes constructed according to my present invention in consequence of their capacity to stand in a vertical tier on the counter or stand of the salesman, one box forming a perfect cover to another, as shown and illustrated.

Having fully described my invention, what

I claim as new, and desire to secure by Letters Patent, is—

A fruit box or basket made smaller at the top than at its bottom, so that the bottom of each box may rest upon the top edge of the box beneath it when a series are packed together, substantially as and for the purpose set forth.

In testimony whereof I have hereunto set my hand and seal.

JOHN H. DOOLITTLE. [L. S.]

In presence of—

SYLVESTER BARBOUR,  
J. M. COLBURN.