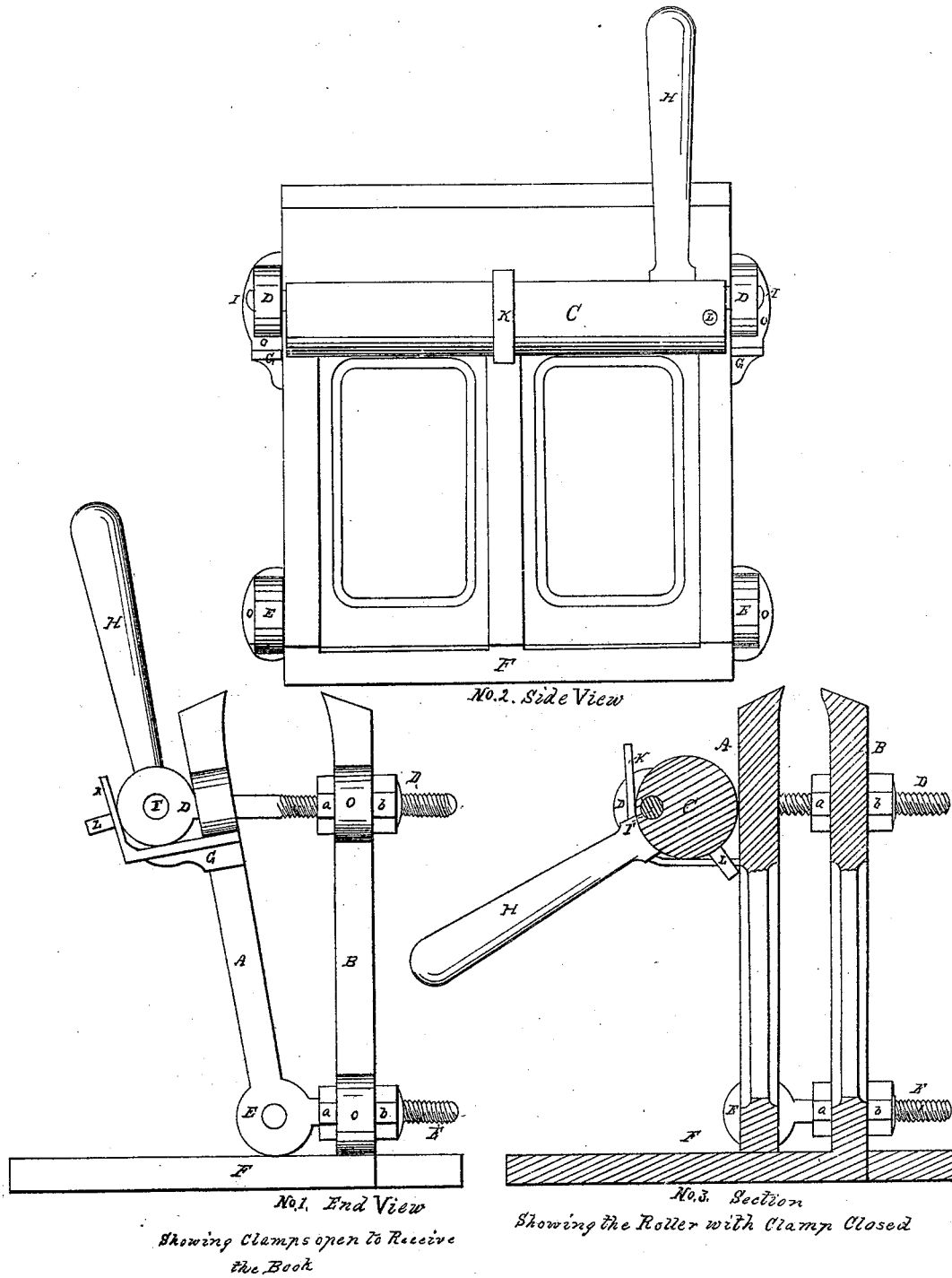


J. W. Jones.
Book Clamp.

N^o 50597.

Patented Oct. 24. 1865.



UNITED STATES PATENT OFFICE.

JOSHUA W. JONES, OF HARRISBURG, PENNSYLVANIA.

BOOK-CLAMP.

Specification forming part of Letters Patent No. **50,597**, dated October 24, 1865; antedated April 27, 1865.

To all whom it may concern:

Be it known that I, JOSHUA W. JONES, of Harrisburg, Dauphin county, and State of Pennsylvania, have invented a new and useful Machine for Clamping Books while they are being backed; and I do hereby declare that the following is a full and exact description of the construction and operation of the same, reference being had to the annexed drawings, making a part of this specification, in which—

Figure No. 1 is an end view, showing the clamp open to receive the book. No. 2 is a side view of the same. No. 3 is a section showing the eccentric with the clamps closed.

B on Nos. 1 and 3 is the stationary jaw, firmly fixed on the bed-plate F.

A is the movable jaw, resting and working on the bed-plate F.

C is a roller or cam, having its axis I and I' out of the center, so as to form an eccentric, removing the jaw A.

D D are adjusting-screws for regulating the eccentric C (into which it works) to suit the different thickness of books to be clamped.

E E are adjusting-screws for adjusting the lower end of jaw A.

a b are set-screws on the adjusting-screws D and E E.

F is the bed-plate of the machine, on which

the stationary jaw B is fixed and the movable jaw A moves.

G is a guide attached to the movable jaw A to support the end of the adjusting-screws D D.

I I' are the journals of the eccentric C, which work into the ends of the adjusting-screws D D.

H is the handle or lever to turn the eccentric C.

K is a small iron shaped as shown on section No. 3, fastened to the movable jaw A, and which is moved by the eccentric C when being unclamped and draws the jaw A open.

L is a small pin placed upon the eccentric to prevent its being turned beyond its greatest diameter.

I do not claim the stationary and movable jaw, but the manner of working it by an eccentric and adjusting it to suit the different thickness of the book, as before described.

What I claim, and desire to secure as my invention, by Letters Patent, is—

The combination of a stationary and movable jaw, adjusted by screws D and E, and worked by an eccentric, in the manner before described.

Witnesses: JOSHUA W. JONES.

ROBT. L. MUENCK,
W. H. MYERS.