

J. G. C. Horton.

Weather Strip.

N^o 51,049.

Patented Nov. 21, 1865.

Fig. 3

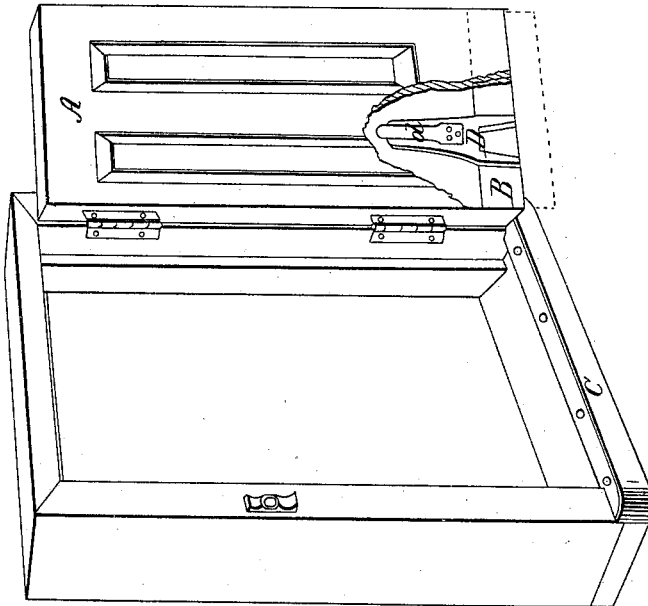


Fig. 2

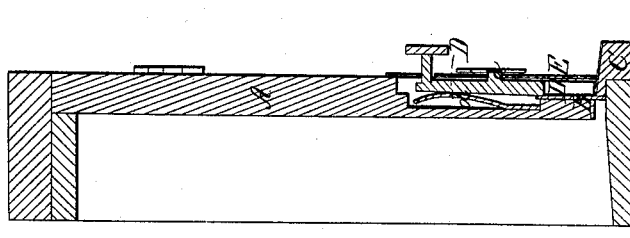
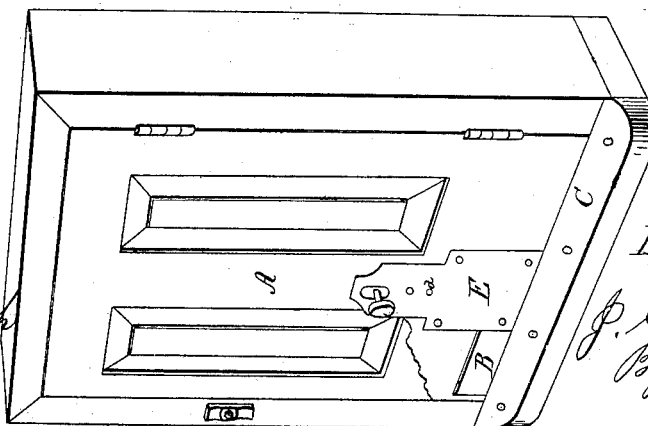


Fig. 1



Witnesses

S. M. Randolph
A. Wagner

Inventor

J. G. C. Horton
By his atty
S. M. Randolph

UNITED STATES PATENT OFFICE.

J. G. C. HORTON, OF LITCHFIELD, ILLINOIS.

IMPROVED WEATHER STRIP AND STOP.

Specification forming part of Letters Patent No. 51,049, dated November 21, 1865.

To all whom it may concern:

Be it known that I, J. G. C. HORTON, of Litchfield, in the county of Montgomery and State of Illinois, have invented a new and useful Combined Door-Bolt and Weather-Stop; and I do hereby declare that the following is a full, clear, and exact description thereof, reference being had to the accompanying drawings, and to the letters of reference marked thereon.

Figure 1 of the annexed drawings represents a door in perspective, to which one of the combined bolt and weather-stops is applied. A portion of the door near one of the lower corners is broken out to disclose the arrangement of the stop. Fig. 2 is a sectional elevation of the door through the axis of the bolt. Fig. 3 is a perspective view similar to Fig. 2, except that the door is open in this view, where as in the former one it is closed.

The object of this invention is to produce a stop that will thoroughly and tightly close the interstice between a door and its threshold, and to be particularly adapted to an outside door of a building, so as to prevent wind or storm from sweeping under the same. The stop arranged for this purpose is one which is not liable to get out of repair by undue wear upon any of its parts, as is the case with those now in use, because when the door is in the act of being swung on its hinges the stop is up out of the way and cannot, therefore, be rubbing on the floor. Furthermore, when the stop is down so as to close the place between the door and threshold it will act as a bolt, which will securely fasten the door and which cannot be easily burglariously entered.

To enable those skilled in the art to make and use my combined stop and bolt, I will proceed to describe its construction and operation.

A small groove is cut into the bottom end

of the door A by means of a handsaw or other similar device, and into this groove the stop B is placed, so as to work easily up or down about one inch, more or less. The stop B extends entirely across the door, and when raised up as far as it is allowed to go the top edge of it will just come even with the bottom end of the door. When the stop B is thrown down it will rest hard on the floor behind the threshold C, which will prevent the door from being opened until the stop B is raised up. The door will thus be effectually bolted fast by the stop when it is down.

The stop B should be a metal plate and riveted to the shank D, which is made to slide up and down in a groove in the lower rail of the door, the shank being confined in the groove by means of the metal face-plate E, which is screwed fast to the rail of the door over it.

There is a pin, *a*, projecting from the front face of the shank D, which is made to fit into a circular mortise or other suitable contrivance in the face-plate E, which will hold the shank and stop down so as to effectually hold it fast. Another mortise should be made in the face-plate, into which the pin *a* may be placed in order to hold the stop up.

A spring, *d*, is fastened to the back side of the shank D, for the purpose of throwing it forward so that the pin *a* may enter and remain in one of the mortises prepared for it.

Having described my invention, what I claim is—

The stop B and the shank D, with the spring *d* and face-plate E, in combination with the door A, for the purpose of forming a combined weather-stop and door-bolt.

J. G. C. HORTON.

Witnesses:

M. RANDOLPH,
A. WAGNER.