

C. D. Blinn,

Inside Blinds.

N^o 51,131.

Patented Nov 28, 1865.

Fig. 3.

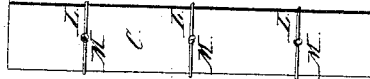


Fig. 2.

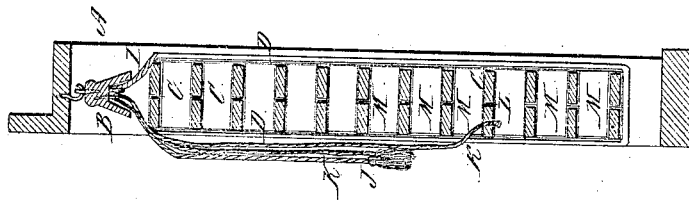
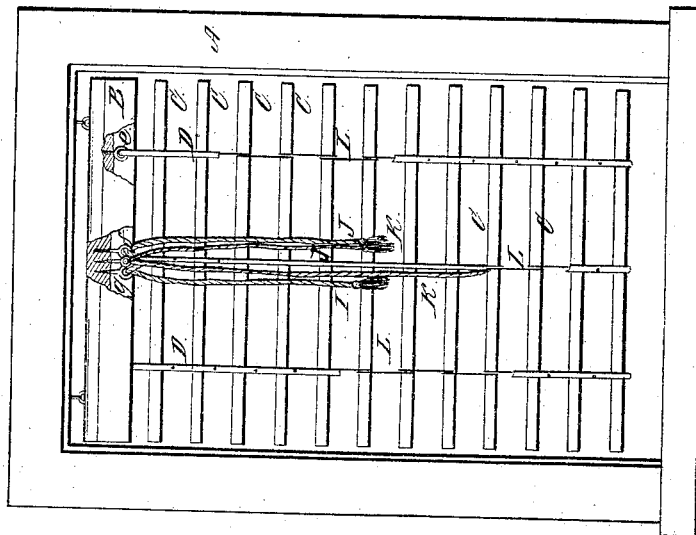


Fig. 1.



Witnesses:
Wm. Brown
Thos. Lusk

Inventor:
C. D. Blinn
By Wm. Lusk atty

UNITED STATES PATENT OFFICE.

CHARLES D. BLINN, OF PORT HURON, MICHIGAN.

VENETIAN BLIND FOR WINDOWS.

Specification forming part of Letters Patent No. 51,131, dated November 28, 1865.

To all whom it may concern:

Be it known that I, CHARLES D. BLINN, of Port Huron, in the county of St. Clair and State of Michigan, have invented a new and useful Improvement in Venetian Blinds; and I do hereby declare that the following is a full, clear, and exact description thereof, which will enable others skilled in the art to make and use the same, reference being had to the accompanying drawings, forming part of this specification, in which—

Figure 1 is an elevation of a window supplied with a blind made according to my invention. Fig. 2 is an elevation of a cross-section through the blind and window. Fig. 3 is a bottom view of one of the slats C, showing the knot made in the cords L.

This invention in Venetian blinds consists in the manner of reeving the cord that supports and connects the several slats to each other, and also in the manner of operating the blind both in raising it and also in opening and closing the slats.

A designates a window in which the blind is suspended. The blind consists of slats C, which are connected to each other by means of two cords, L, which, commencing at the lowest slat, is carried around each edge, back and front of the same, and then over the same to the orifice M in the middle of its width, down through which they pass, and are knotted together on the under side of the slat. They are then carried outward to each edge again, and thence upward to the next slat, over which they are taken to its center, and then down through its opening M to its lower side, where it is again knotted, thence outward to the edges of that slat and upward to the next slat, and so on through the whole series. The cords L are applied in three several lines in this example of my invention.

The whole series or body of slats is suspended from a head-piece or beam, B, which is, in turn, hung by hooks to the top piece or frame of the window-casing. The beam B in cross-section is made bell-shaped, or with conical sides, and has a deep groove cut in its lower side, in the bottom of which are screwed sundry hooks, as hereinafter mentioned.

D D are cords, which are carried in two lines over the edges of the slats and over the cords

L, so as to cover them both behind and before, and tacked or sewed to the cords L at the edges of the slats and elsewhere during their course, if desired. The cords D D are passed above the slats through eyes or hooks e, only one of which is seen in Fig. 1, without being fastened to said hooks.

J is a cord, which is fastened to that cord L which occurs in the middle line of the slats, in the same manner as the cords D are fastened to the side cords, L; but it is only placed on the front side of the slats. It is carried up through a hook, f, in the beam B, and thence downward again in front of the slats, having a tassel at its free end.

I is a cord, which is fastened along the middle line of cords L, on the back side of the blind. Its free end is carried through the hook g, and hangs down in front like the cord J. The office of these cords I and J is severally to open the slats to a horizontal position, as shown in the drawing, or to close them—that is to say, to bring them to an inclined position with respect to each other.

The blue cord K is intended for hoisting the blind. One of its ends is fastened to one of the slats C at the center of its length and width, and it is then carried up through the hook h, and its free end hangs down in front, as seen in the drawings, so that one can seize it and by pulling it downward raise the slats toward the beam B.

If the cord K is fastened to the lowest slat, all the slats will be folded together when the cord K is drawn down to its utmost extent.

I claim as new and desire to secure by Letters Patent—

1. Connecting the slats to each other by means of cords L, rove through them, and fastened below each slat by means of knotting said cords, substantially as above shown and described.

2. In combination, the cords L, rove through the blinds and connected to them, as shown, and the cords D D J I, applied substantially as shown.

CHARLES D. BLINN.

Witnesses:

ROBERT MORRISON,
RANSOM S. HOLLAND.