

F. SCHOPP.

Breech-Loading Fire-Arm.

No. 51,225.

Patented Nov. 28, 1865

Fig. 1.

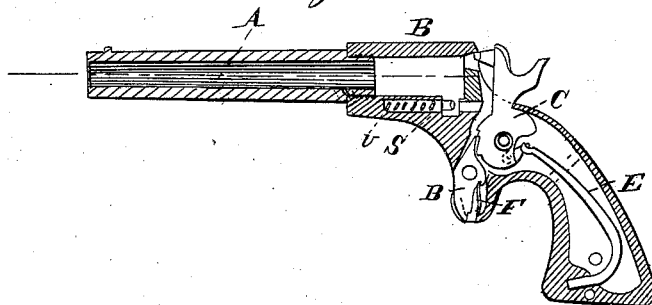


Fig. 3.

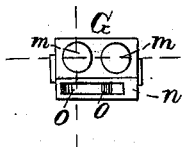


Fig. 2.

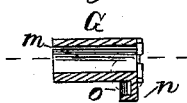


Fig. 4.

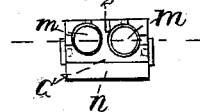
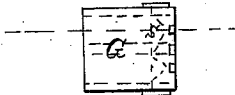


Fig. 5.



Inventor.

Francis Schopp

Witnesses.

Henry C. Rader

Shul work

UNITED STATES PATENT OFFICE.

FRANCIS SCHOPP, OF NEW YORK, N. Y.

IMPROVEMENT IN BREECH-LOADING FIRE-ARMS.

Specification forming part of Letters Patent No. 51,225, dated November 28, 1865.

To all whom it may concern:

Be it known that I, FRANCIS SCHOPP, of New York, in the county and State of New York, have invented a new and useful Improvement in Pistols; and I do hereby declare that the following is a full and exact description of the same, reference being had to the accompanying drawings, and to the letters of reference marked thereon.

Figure I represents a longitudinal section of my improved pistol. Fig. II is a section of the movable breech. Fig. III is a front view of the same; Fig. IV, an end view, and Fig. V of top view, of the breech.

The nature of my invention consists in the arrangement of a movable breech, sliding horizontally and containing two charges capable of being fired off successively.

In the accompanying drawings, A represents the barrel, firmly secured to the stock or breech-frame B. C is the cock, D the trigger, E the lock-spring, and F the trigger-spring, constructed in the usual manner.

The opening through the stock or breech-frame B is made square, into which a square breech, G, is fitted perfectly tight, capable of moving sidewise or horizontally, and provided with two openings, *m m'*, to receive the cartridges. On the lower side, near the after end of this breech-piece, a projection, *n*, is made, extending the whole width of said breech-piece G, and provided with recesses *o o'*, made with slanting sides, into which said recesses a pin, *s*, arranged in a suitable hole in the lower part of the breech-frame, B, is made to work. This pin *s* is acted upon by a spiral spring, *v*, situated behind said pin *s*, so as to force said pin into the recesses *o* or *o'*, and to keep thereby the breech-piece G fast in either one or the other position.

The cock C being placed in the position represented in the drawings, or at half-cock, the breech-piece G can be moved sideways sufficient to introduce a cartridge into one of the openings, *m*, at the side of the breech-frame

when the breech-piece G is moved in the other direction, so as to charge the other opening, *m'*, on the other side of the breech-frame. The breech-piece G is then moved so that the recess 2 between the two openings *m m'* (see Fig. IV) comes opposite the end of the cock C, when said cock C may be brought to rest, falling into this recess 2, and holding thereby the breech-piece G in that position, when the now loaded pistol can be carried with perfect safety in the pocket.

The bottoms of the recesses *o* and *o'* correspond with the center lines of the cartridge-chambers *m m'*, but the inclined side of the recess *o* toward *o'* is carried farther over than the center of the breech-piece G, by which arrangement the pin *s* will stand upon this inclined surface, when the breech-piece G is in the center held fast by the cock C, as above described.

When the pistol is to be fired off the motion of the cock C to half-cock will liberate the breech-piece G, when the pin *s* will act against the inclined side of the recess *o* so as to move said breech-piece G in a manner that the cartridge-chamber *m* will come in a line with the barrel A, ready to be fired off, after which the breech-piece can be moved by the finger so that the pin *s* comes into the recess *o'*, whereby the cartridge-chamber *m'* will be brought in a line with the barrel A, ready to be fired off, when the breech must be reloaded.

I do not claim, generally, a double-chambered square sliding breech-piece; but

What I claim as my invention, and desire to secure by Letters Patent, is—

The pin *s*, acted upon by a spring and operating the breech-piece G, in the manner and for the purpose substantially as set forth and specified.

FRANCIS SCHOPP.

Witnesses:

HENRY E. ROEDER,
DAVID MOSHER.