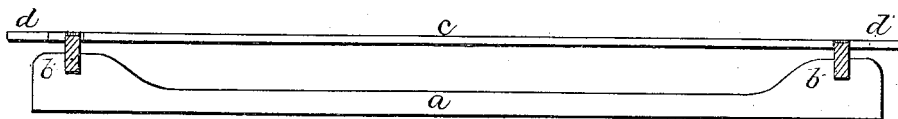
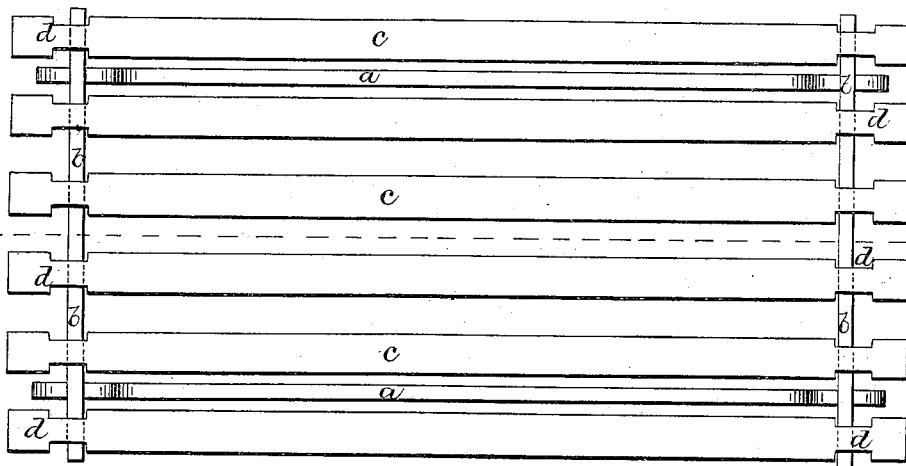


G. Schott,
Bed Bottom,
N^o 51,755, Patented Dec. 26, 1865.

Fig; 1



Fig; 2.



Witnesses;

Chas. H. Carver

Chas. H. Smith

Inventor;

Geo. Schott.

UNITED STATES PATENT OFFICE.

GEORGE SCHOTT, OF NEW YORK, N. Y.

BEDSTEAD-BOTTOM.

Specification forming part of Letters Patent No. 51,755, dated December 26, 1865.

To all whom it may concern:

Be it known that I, GEORGE SCHOTT, of the city and State of New York, have invented and made a certain new and useful Improvement in Bed-Bottoms; and I do hereby declare the following to be a full, clear, and exact description of the said invention, reference being had to the annexed drawings, making part of this specification, wherein—

Figure 1 is a longitudinal section of said bed-bottom, and Fig. 2 is a plan of the same.

Similar marks of reference denote the same parts.

The nature of my said invention consists in a frame, the cross-pieces of which are notched and covered with felt or other yielding material, and receive the notched ends of spring-slats. Said slats bending under weight are sustained by their notched ends drawing up against the cross-pieces, and the surfaces of said cross-pieces that come in contact with said slats being covered with felt or similar material, no noise results from the slats sliding upon said cross-pieces.

In the drawings, *a a* are longitudinal rails supporting the cross-pieces *b b*, and notched at the points of intersection, so as to set into each other and form a frame, and at the same time be capable of separation, so that the rails and cross-pieces may be packed together for transportation.

The rails *a a* are to be supported in the bedstead in any usual manner by setting upon the ordinary slats, or into bearings provided for them in the end pieces of the bedstead.

The upper edges of the cross-pieces *b b* are notched at suitable distances apart, according to the number of slats *c c* which are employed,

and the said notches are covered or lined with felt or other suitable yielding material that will prevent noise by the motion of the slats upon the cross-pieces as said slats bend.

If the slats were straight at their sides, they might work endwise and come in contact with the head or foot board, or slip off at one end of the cross-piece *b*. To prevent this I form the notches in *b* narrower than the width of the slats, and notch said slats, as seen at *d d*, which by the shoulders of the notches prevent the slats being moved too far either way, and in case too great weight is placed on the slats the outer shoulders of the notches coming up against the cross-pieces *b b* sustain said slats, so that they will not break so easily.

By this construction I am enabled to make the said slats much thinner and more elastic than would otherwise be safe, and thus a very easy and yielding bed-bottom is obtained, and one that can be applied to any character of bedstead, and is cheap and portable. In case the slats become bent they may be turned over.

What I claim, and desire to secure by Letters Patent, is—

The bed-bottom formed of slats with notched ends sustained by notched cross-pieces covered with felt or other yielding material, for the purposes and as specified, and in combination therewith the rails *a*, notched to receive the cross-pieces *b* and form a frame, as set forth.

In witness whereof I have hereunto set my signature this 17th day of November, 1865.

GEO. SCHOTT.

Witnesses:

THOS. GEO. HAROLD,
CHAS. H. SMITH.