

C. G. Herbert,

Camp Stool,

N^o 52,412,

Patented Feb. 6, 1866.

Fig. 3.

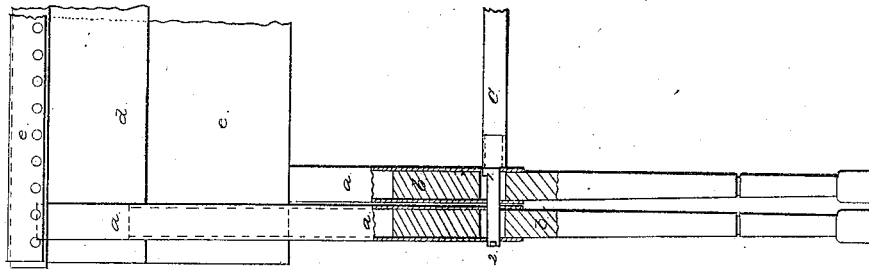
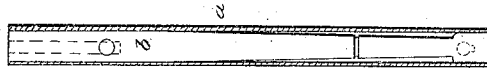
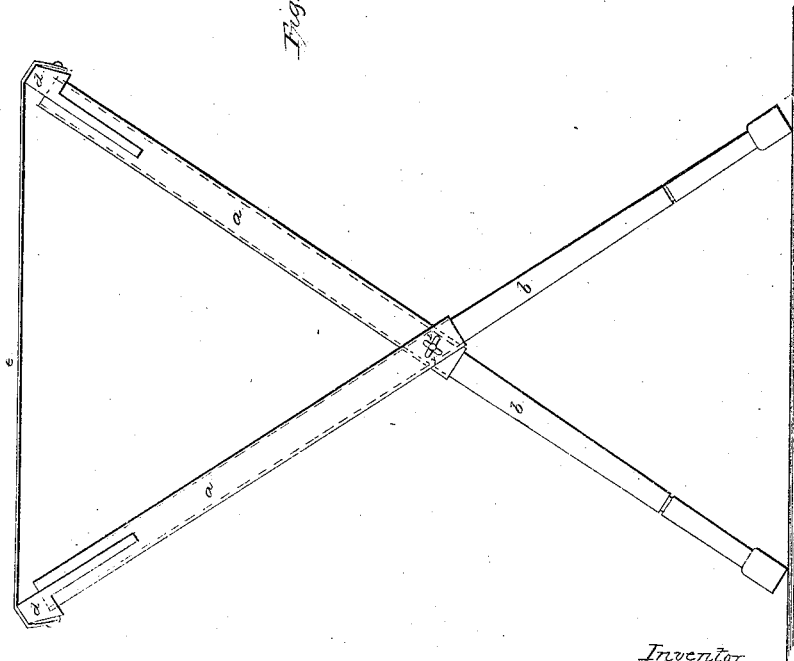


Fig. 2.

Fig. 1.



Witnesses.

*Charles Smith
Jas. D. Walker.*

Inventor.

Charles G. Herbert.

UNITED STATES PATENT OFFICE.

CHARLES G. HERBERT, OF NEW YORK, N. Y.

CAMP-STOOL.

Specification forming part of Letters Patent No. 52,412, dated February 6, 1866.

To all whom it may concern:

Be it known that I, CHARLES G. HERBERT, of the city and State of New York, have invented, made, and applied to use a certain new and useful Improvement in Camp or Portable Stools; and I do hereby declare the following to be a full, clear, and exact description of the said invention, reference being had to the annexed drawings, making part of this specification, wherein—

Figure 1 is a side elevation of my improved stool as open. Fig. 2 shows a portion of the camp-stool closed, the legs being partially in section, and Fig. 3 is a section of one of the legs detached and shortened by sliding the parts together.

Similar marks of reference denote the same parts.

My invention relates to a camp or portable stool fitted so as to be taken apart and rolled into a small compass for the convenience of transportation.

Said invention consists in an extension-leg formed by a pipe containing a sliding rod or tube, and combined with a cross-bar that holds the separate legs in their extended condition and connects four of said extension-legs to form the camp-stool frame; and in combination therewith I employ a seat formed of webbing, or similar material, attached to cross-rails that set into notches at the ends of the legs.

In the drawings, *a* is a tube of suitable size and material. I prefer that it should be iron or brass, about seven-eighths of an inch in diameter. Within this tube is rod or tube *b*, which I prefer to be made of wood and fitted loosely into the tube *a*. The tube *a* is perforated near one end, and the rod *b* near the other. The rod can be slidden into the tube, as in Fig. 3, so as to occupy but little space in transportation, or it may be slidden out until the

respective holes coincide for the passage of the round metal end piece of the cross-bar *c*, as seen in Figs. 1 and 2.

It will now be understood that all four of the legs of my camp-stool are made as before described, and that they are set together in pairs at the ends of the cross-bar *c* to form the double X-legs; and to prevent the cross-bar *c* turning I provide a pin or key at 1, Fig. 2, entering a notch or hole in the pipe *a*; and to keep the outer legs from slipping off the ends of the bar *c*, I employ lugs at 2 2, the pipe *a* at the hole being provided with notches for passing said lugs previous to the legs being turned on *c* to position. Thereby the lugs come on the unnotched edges of the hole in *a*. The ends of the tubes *a* are slotted or mortised to receive the rail-pieces *d d*, to which the webbing or seat *e* is attached. The ends of the tubes *a* pass into cavities in the under side of the T-head of these rail-pieces, and the lower edges of said rail-pieces are also notched to receive the bottom of the slot in the pipe *a*. By this means the parts are prevented from moving.

What I claim, and desire to secure by Letters Patent, is—

1. The extension-legs formed of pipes containing sliding rods or tubes, in combination with the cross-bar that connects the legs and keeps them extended, as and for the purposes set forth.

2. In combination with such legs and cross-bar, the cross-rails and seat, fitted substantially as specified.

In witness whereof I have hereunto set my signature this 8th day of January, A. D. 1866.

CHARLES G. HERBERT.

Witnesses:

GEO. D. WALKER,
CHAS. H. SMITH.