

G. Havell,

Door Bolt.

N^o 52,570.

Patented Feb. 13, 1866.

Fig: 1.

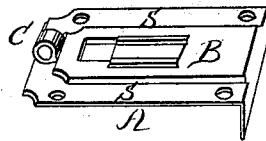


Fig: 2.

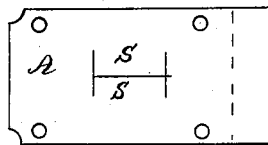


Fig: 3.

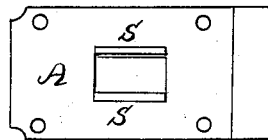


Fig: 4.



Witnesses:
Samuel L. Thompson.
Olias Taylor

Inventor:
George Havell

UNITED STATES PATENT OFFICE.

GEORGE HAVELL, OF NEWARK, NEW JERSEY.

IMPROVEMENT IN BOLTS.

Specification forming part of Letters Patent No. 52,570, dated February 13, 1866.

To all whom it may concern:

Be it known that I, GEORGE HAVELL, of the city of Newark, in the county of Essex and State of New Jersey, have invented certain new and useful Improvements in Bolts for Trays in Trunks and other Purposes; and I do hereby declare that the following is a full, clear, and exact description of my said invention, reference being had to the accompanying drawings, making a part of this specification, in which—

Figure 1 is a perspective view; Fig. 2, the bed of the bolt as first cut out. Fig. 3 is the same as Fig. 2, excepting that the slides are turned up ready to receive the bolt. Fig. 4 is the bolt.

The same letters indicate like parts in all the figures.

The nature of my invention consists in forming a bolt of two pieces of metal, one resting upon the other, in such a manner that the bed or part rested upon forms a slide and clasp for the other piece, which is the bolt.

In Fig. 1, A is the bed, and B is the bolt, which is held in proper position by the slides S S, which are a part of the bed A.

In Fig. 2, A is the bed, which is now shown as it appears when cut out from the sheet metal in the first stage or process of manufacture. The parts S S in Fig. 2 are the slides.

In Fig. 3, A is the bed-piece, (shown in the

second stage or process of manufacture,) with the slides S S turned up ready to receive the bolt.

Fig. 4 shows the bolt as cut out from the sheet metal and ready to be clasped upon the bed by means of the slides S S. The part marked C in Fig. 4 is the same as shown at C, Fig. 1, turned up to form a knob or ready to receive a ring.

While I prefer to make the bolt, Fig. 1, substantially as shown, it is evident that the device can be variously modified and changed, and the separate parts thereof reversed—for example, in such a way that the bolt may be clamped to the bed, instead of the bed being clamped to the bolt, as now, or the slides S S may be changed in position and formed at the sides or edges of the bed A, or the bolt may be formed with two slots instead of one, as now. Other changes may also be made, all, however, without effecting the character or principle of my said invention.

What I claim as my invention, and desire to secure by Letters Patent of the United States, is—

The bolt, Fig. 1, constructed substantially as described.

GEORGE HAVELL.

Witnesses:

DANIEL F. TOMPKINS,
ELIAS TAYLOR.