

J. R. Cluxton,
Neck Ties.

Nº 53,272.

Patented Mar. 20. 1866.

Fig. 1.

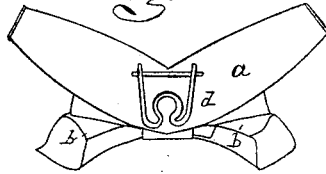


Fig. 2.

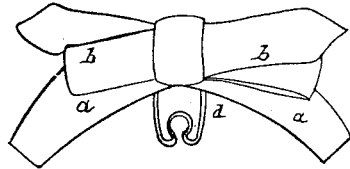


Fig. 3.

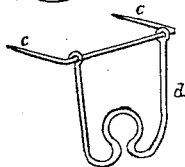
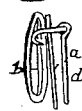


Fig. 4.



Witnessed by
W. F. Hall
Jas. L. Carr.

Inventor
James R. Cluxton
By Munn & Co.
Attorneys

UNITED STATES PATENT OFFICE.

JAMES R. CLUXTON, OF RUSSELLVILLE, OHIO.

IMPROVEMENT IN NECKTIES.

Specification forming part of Letters Patent No. 53,272, dated March 20, 1866.

To all whom it may concern:

Be it known that I, JAMES R. CLUXTON, of Russellville, in the county of Brown and State of Ohio, have made new and useful Improvements in Neckties; and I do hereby declare the following to be a full, clear, and exact description of the nature, construction, and operation of the same, sufficient to enable one skilled in the art to which it appertains to construct and use the same, reference being had to the accompanying drawings, which is made part of this specification.

Figure 1 is a rear view. Fig. 2 shows the position of the tie while being attached. Fig. 3 is a perspective view of the attaching device. Fig. 4 is a side elevation and section, showing the mode of attaching the bow to the pad by means of the staple.

My improvement consists of a method of securing the bow to the pad and of attaching the pad to the collar of the shirt.

The first is attained by passing the ends of the wire which is attached to the pad through the latter, so as to hook into the bow, and thereby attach the bow to the pad. The second object is attained by hinging a spring-piece to the pad-frame, the said piece embracing the button of the shirt-collar while the tie is elevated, so as to permit the engagement of the spring-piece with the button to be observed by the wearer in looking in the glass, the tie being afterward folded down into its proper position.

In the drawings, *a* is the pad, and *b* the bow,

of the necktie. *c* is the frame, which consists of a staple, and affords a pintle for the hinged ends, which pass through the pad *a* and are bent over to clasp the bow *b* and attach it to the pad *a*.

The hinged portion *d* consists of an eye and a neck joined by side wires to the frame *c* by means of being bent around it, as seen in Figs. 3 and 4, forming a joint, so that, the necktie being inverted, as seen in Fig. 2, the spring-loop may be inserted over the button of the collars, the thread which attaches the button to the linen passing through the neck of the spring-loop. The neck being then brought to its proper position, the ends of the pad are tucked between the folds of the collar, and the tie is complete.

I claim—

1. The spring-piece *d*, which clasps the button of the collar, and is hinged to the staple *c*, constructed and operating substantially as described and represented.

2. The staple *c*, forming, by means of its hooking ends, the means of attachment of the pad and bow, and also forming a pintle for the hinged spring-frame, substantially as described and represented.

The above specification of my patent signed this 16th day of December, 1865.

JAMES R. CLUXTON.

Witnesses:

W. P. WILLIAMS,
GE. L. SEISS.