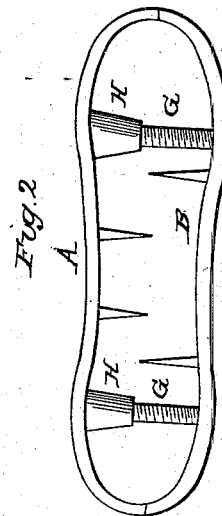
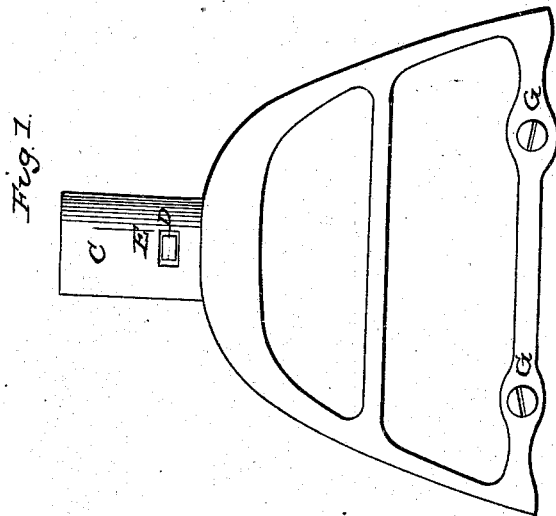
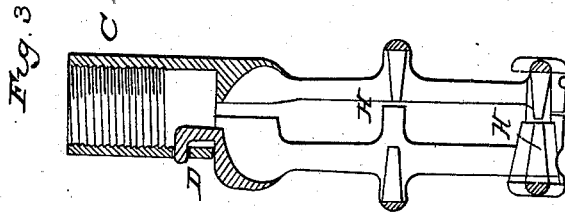


M. C. KILGORE.

Broom Head.

No. 54,559.

Patented May 8, 1866.



Witnesses
J. C. Smith
J. H. Brown

Inventor
M. C. Kilgore
Chapman Hornum, Silmon Brown
Attys

UNITED STATES PATENT OFFICE.

MARTIN C. KILGORE, OF WASHINGTON, IOWA.

IMPROVED BROOM-HEAD.

Specification forming part of Letters Patent No. 54,559, dated May 8, 1866.

To all whom it may concern:

Be it known that I, MARTIN C. KILGORE, of Washington, in the county of Washington and State of Iowa, have invented a new and valuable Improvement in Broom-Heads; and I do hereby declare that the following is a full, clear, and exact description of the construction and operation of the same, reference being had to the annexed drawing, making a part of this specification, and to the letters of reference marked thereon.

The object of my invention is to construct a broom-head that shall be more perfect in form and more convenient in use than any heretofore devised as a new article of manufacture.

My broom-head is constructed in two sections, A and B, on one of which is the socket for the handle of the broom. The interior of this socket has a thread sufficiently sharp to enable me to cut a screw therewith on the end of the broom-handle by turning the same round and round therein. By this device an easy and firm connection is formed between the broom-handle and the head. I sometimes also puncture the socket, so as to provide for a screw or bolt to pass into the broom-handle; but I think the mode of connecting the handle with the head preferable by the means first mentioned.

The socket of my broom-head is marked C on the drawings. It also has an opening made therein, as represented by D. The object of this opening is to provide means for an instantaneous connection between the two sections of the broom-head.

The section B has a head or flange that turns up somewhat in the form of a snake-head, so as to easily and readily fit in the opening D and become attached thereto. This head or flange is marked E.

Each section of my broom-head has two or more ribs extending from side to side. These ribs are rounded upward somewhat, as shown on the drawings, and are provided with sharp teeth that extend upward and downward therefrom, respectively, in the butts of the broom-corn to aid in holding it securely.

The sides of each section of my broom-head are scalloped or grooved upward and downward respectively, and one section has projections

on its side that extend within a short distance of the other.

In the lower ribs of sections A and B, I affix two screws and threads, marked G.

The section of my broom-head in which the points of said screws rest is provided on the lower rib thereof with projections extending inward from said rib about five-eighths of an inch, more or less, for the purpose of forming a firm and substantial screw-thread therein. These projections are marked H.

The object of the devices last mentioned, combined, is to enable me to clasp the broom-corn more tightly and hold it more securely than can be done when the screws are placed on the sides of the broom-head, or when the screw-thread has not sufficient length to endure a severe strain thereon.

It is evident that the durability of a broom depends in a great measure upon the tightness with which the same is clasped and held in the broom-head. Now, as these lower ribs, screws, and threads fall below the butts of the broom-corn and upon the yielding brush thereof, my device of placing the screws and threads on the lower ribs enables me to press such yielding brush to an indefinite extent. I obtain a greater leverage by placing the screws on the lower ribs than I could by placing them on the sides, and hence I can render the broom firm and permanent in its fastenings.

My device for connecting the two sections of my broom-head possesses the advantage of cheapness and utility. It saves the expense of a hinge, and while the broom is being made the detached section is not in the way. I also consider the connection stronger when made than when formed with an ordinary hinge.

What I claim as my invention, and desire to secure by Letters Patent, is—

A broom-head constructed in two sections connected by opening D and snake-head E, and having screws and threads G and projections H, constructed, combined, and arranged substantially as and for the purposes set forth.

MARTIN C. KILGORE.

Witnesses:

J. C. SMITH,

E. L. NORFOLK.