

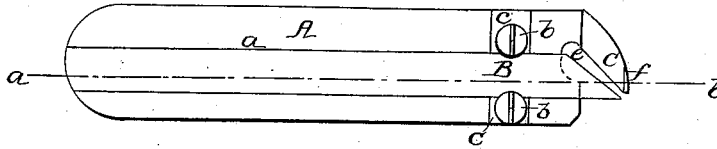
J. Brooks

Shoe-Sole Machine.

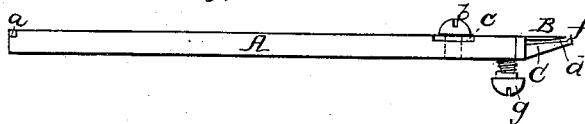
N^o 55002.

Patented May 22, 1866.

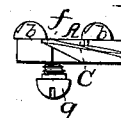
Fig; 1.



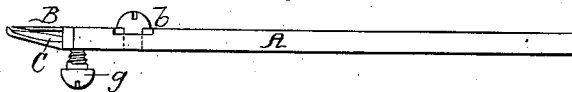
Fig; 2.



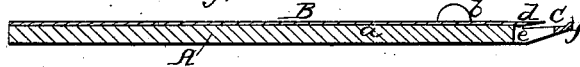
Fig; 4.



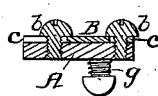
Fig; 3.



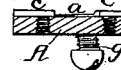
Fig; 5.



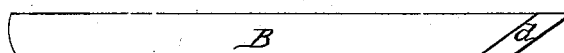
Fig; 6.



Fig; 8.



Fig; 7.



Witnesses;

*G. C. Washburn
Samuel N. Piper*

Inventor,

John Brooks.

*by his Attorney
R. H. Ellis.*

UNITED STATES PATENT OFFICE.

JOHN BROOKS, OF NORTH BRIDGEWATER, MASSACHUSETTS, ASSIGNOR
TO HIMSELF AND JOSEPH BROOKS, OF SAME PLACE.

IMPROVED WELT-TRIMMER.

Specification forming part of Letters Patent No. 55,002, dated May 22, 1866.

To all whom it may concern:

Be it known that I, JOHN BROOKS, of North Bridgewater, in the county of Plymouth and State of Massachusetts, have made a new and useful or Improved Welt-Trimmer for the use of Shoemakers; and I do hereby declare the same to be fully described in the following specification and represented in the accompanying drawings, of which—

Figure 1 is a side elevation, Figs. 2 and 3 are edge views, Fig. 4 a front-end view, Fig. 5 a longitudinal section, and Fig. 6 a transverse section, of it. Fig. 7 is an inner-side view of the knife-blade. Fig. 8 is a transverse section of the stock without the knife-blade.

In the said drawings, A denotes a metallic handle or stock provided at one end with a compound guard, C, formed as represented. This handle is grooved lengthwise on its face—that is, it has a groove, *a*, made in it to receive a long steel knife, B, which has its cutting-edge at one end of it, or that which is next to the guard C. The said cutting-edge makes an acute angle with the lower edge of the knife, and is arranged with respect to the guard C in manner as shown in the drawings.

The knife is held in place in the stock by means of clamp-screws *b b*, arranged to screw into the stock and with their heads to lap on the knife-blade, there being recesses *c c* made in the stock, and arranged with respect to the screw-heads in manner as shown in Figs. 1 and 6, the same being to enable the screw-heads to bear on the knife-blade and not on the stock.

To form the cutting-edge, the knife-blade on its inner side is beveled, as shown at *d* in Fig. 5.

There is a throat or opening, *e*, between the guard C and the next adjacent end of the stock, such throat being formed as represented.

The guard C is made with a lip, *f*, to project from that face of it which is next to the knife, the same being as shown in the drawings. Furthermore, a screw, *g*, screwed into and

through the stock and against the knife near its cutting-edge, serves to press the said edge away from the said face of the guard, in order to adjust the edge for cutting a shaving of the required thickness. The guard is a compound one—that is, it has two bearing surfaces, one being the rear face of it, and the other being the outer edge of the lip *f*. While when the welt-trimmer is in use the said lip serves to prevent the knife from cutting the sewing connecting the welt and sole of the shoe, the back of the guard will operate to prevent the knife from cutting the upper.

In using the implement a workman holding it by the handle should insert the guard between the welt and the upper of the shoe whose welt is to be trimmed or pared, and with the knife-edge against the welt, and should press the implement forward against the welt, so as to trim it down as may be required.

One great peculiarity of the welt-trimmer is its long knife, which, being separate from the handle and guard and the lip, can be sharpened from time to time, until it may not be long enough to be held in place in the stock by the clamp-screws.

I claim as my invention—

1. The improved welt-trimmer as made, not only of the guard C and the grooved handle or stock A, but with the long knife B, to fit into the groove of the stock and be confined by means substantially as described.

2. The arrangement of the lip *f*, with the guard C and the knife B, when arranged with and applied to the stock, substantially as described.

3. The combination and arrangement of the adjusting-screw *g* with the knife-stock and guard, arranged and applied together, substantially as specified.

JOHN BROOKS.

Witnesses:

R. H. EDDY,
F. P. HALE, Jr.