

N. Landry,

Picture Exhibitor.

N^o 55,121.

Patented May 29, 1866.

Fig. 1.

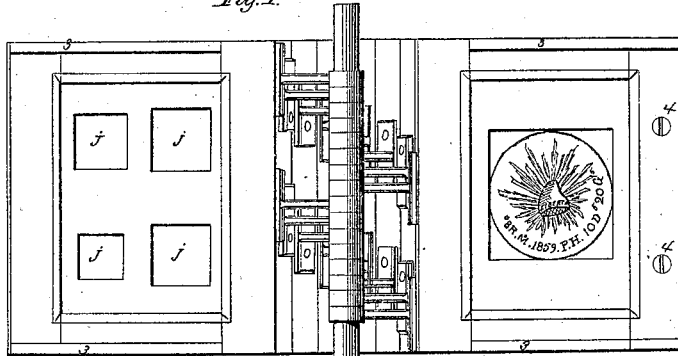


Fig. 2.

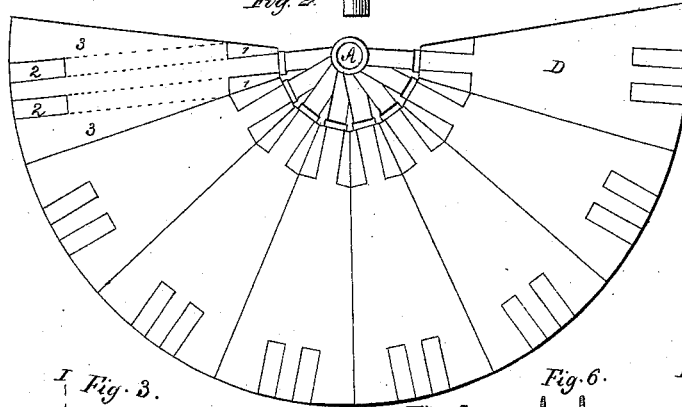


Fig. 3.

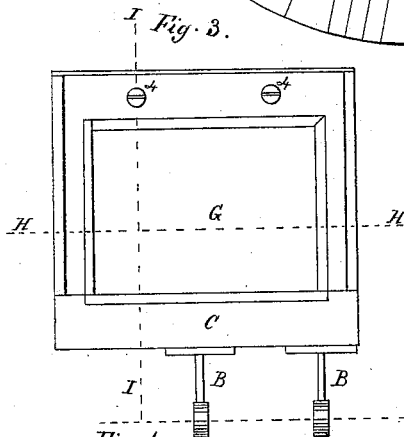


Fig. 5.

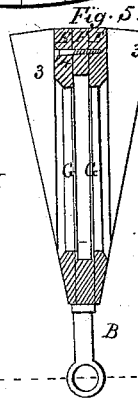


Fig. 6.

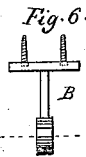


Fig. 7.

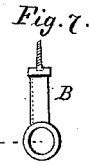
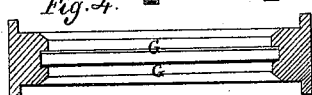


Fig. 4.



Witnesses
Jully R. Wise
Carl H. Haller

Inventor
N. Landry

UNITED STATES PATENT OFFICE.

NORBERT LANDRY, OF SAN FRANCISCO, CALIFORNIA.

COIN-HOLDER.

Specification forming part of Letters Patent No. 55,121, dated May 29, 1866.

To all whom it may concern:

Be it known that I, NORBERT LANDRY, of the city and county of San Francisco, State of California, have invented a certain new and useful Device for Exhibiting and Protecting Coins and Medals, called "Landry's Coin-Album;" and I do hereby declare the following description and accompanying drawings are sufficient to enable any person skilled in the art or science to which it most nearly appertains to make and use my said invention without further invention or experiment.

The nature of my invention consists in arranging upon a horizontal axis, by means of arms, a series of frames in which plates of glass are introduced, between which the coins are displayed, the leaves or frames to be folded over one after the other, similar to the leaves of a photographic album.

Referring to the drawings, Figure 1 is a top view of my coin-album, showing two leaves; Fig. 2, a side elevation; Fig. 3, a plan of leaf or coin-frame. Figs. 4 and 5 are transverse sections of a leaf, and Figs. 6 and 7 the manner of attaching to the axis.

A represents the axle, a round piece of iron or other material turned smooth, of uniform circumference, each end to be hung in sockets or bearings attached to a frame, which may be a box with legs in the form of a stand with cover and lock.

B B, &c., represent the hinges, which consist of an arm and ring, and which are attached to the frame by means of screws. The axis around which they revolve passes through the entire series of rings.

C represents the lower or hinge rail of the frame, to be mortised at each end to receive the side rail; D, the side rail with tenon at 1 1, to be fastened into the hinge-rail at the outer end, 2 2, Fig. 2. The side rail should be made the same size as the hinge-rail with the addition of the difference in the dimension of the fillet marked 3, Fig. 5, wherever it occurs.

The side and hinge rails are to be grooved to receive plates of glass, between which the coins or medals are placed.

E E represent the top rail (shown in section) to be constructed in two pieces, whose ends rest in the mortises of the side rail and set apart sufficient to admit the glass and coins between them, which are kept in place by the

stop F by means of two screws, marked 4. (Shown in section, Fig. 5.)

G, &c., represent the glasses between which the coins are placed, where they are held in position by means of pasteboard cut out to fit the different sizes.

H H represent the side rails through section marked H, Figs. 3 and 4. I I represent section marked I of the hinge and top rail, with stop and screw; J, a square space in the pasteboard in which the coin is placed.

For fastening the coins or medals between the glasses in the frames I employ a piece of pasteboard, gutta-percha, or any other material of suitable thickness having a square cut of sufficient size to admit the coin. I prefer a square instead of a circle, as then the thickness of the coin can be more readily seen. Should the pieces be very small, such as a half dime, it may be fastened to one of the glasses with wax, glue, or other adhesive substance.

The size of my coin-album may be increased or diminished according to fancy, and may have a greater or smaller number of leaves, all of which can be confined on the same space; and, if desired, each frame may be fastened to one hinge or one hinge to each frame.

It may be found more convenient to place coins of uniform thickness together, as then each side and their thickness may be more readily perceived, or having a number of coins the same thickness. The whole frame might be filled up by placing them edge to edge without the aid of any material to separate one coin from the other, in which case it would be necessary to fill up the space around the frame to the depth of the groove, so that the whole coin be visible.

In case a person possessed more coins than could be conveniently placed on one axle, he might have a number of axles, all fitting into one box or exhibiting-case, or one axle with a large number of pages filling the whole length of a room.

By this arrangement for displaying coins they may be seen without wear by attrition and without fear of any being stolen, presenting a face of two frames at a glance, and may be added to or taken from by simply unscrewing the stop in the top rail and taking out the glasses.

The pages of each frame may be numbered,

and a catalogue with index of the whole giving the date and history of each coin; or a certain coin from the album may be selected, and by referring to the catalogue its description and history may be had.

Having thus described my coin-album, what I claim, and desire to secure by Letters Patent, is—

The arrangement of coins and medals upon a vertical inclined or horizontal axis between or upon transparent substances to be revolved

at pleasure for the purpose of displaying said coins or medals, substantially as herein described and set forth.

In witness whereof I have hereunto set my hand and seal this 8th day of February, A. D. 1866.

NO. LANDRY. [L. S.]

Witnesses:

C. W. M. SMITH,
GUS. A. MAUTHEY.